

What is Duke Energy interconnection?

Interconnection allows Duke Energy customers to connect to our energy grid using their own generated energy. Customers can sell excess energy back to the company.

Does Duke Energy Florida offer shared solar?

Duke Energy Florida offers two programs called "Shared Solar" and "Clean Energy Connection". The former costs much more than an average electric bill, but the latter should provide a small amount of savings over time. FPL offers the SolarTogether program, which it estimates will result in savings over time.

Does Duke Energy require an application to connect?

Each state within Duke Energy's territory requires an application to connect. The application fees and requirements vary by state. For interconnection for customers with Tier 1 solar panel systems (generating 10 kW or less), there is no application fee, disconnect switch or insurance requirement associated with this system size.

Does Duke Energy require a disconnect switch?

Duke Energy also requires the installation of a disconnect switch. After solar panel system installation, an inspection may be required. Once the inspection is complete, the customer will receive a confirmation letter from Duke Energy indicating that the solar panel system is complete.

Does Duke Energy offer net metering?

Duke Energy's service territory covers regions of Florida, Indiana, Kentucky, North Carolina, Ohio, and South Carolina. Net metering is offered to all customers throughout the territory. Program available? What are Duke Energy's rates and prices for net metering? Rates and prices for Duke Energy net metering vary from state to state.

Does Duke Energy offer solar rebates in North Carolina?

Duke Energy offers rebates to North Carolina customers who want to install a solar panel system. For homeowners, the program offers a \$0.60/Watt rebate for systems up to 10 kilowatts. The benefit is equivalent to \$3,600 for a 6 kilowatt (kW) system. Nonresidential customers also have access to rebates of \$0.50/Watt

# DUKE ENERGY SOLAR INTERCONNECTION



to \$0.75/Watt.



Solar Projects that have an interconnection application submitted to Duke Energy before October 1st, 2023 will be grandfathered into the legacy net metering program until 2027. After Jan 1, 2027, these solar customers will stay on a the modified net metering rate for 12 years, then switch to the new Time of Use (TOU) rate

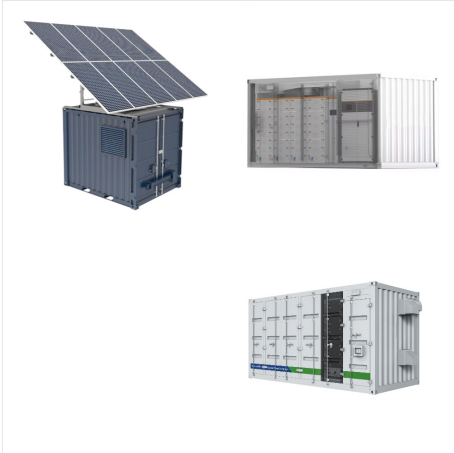


Existing solar customers and those who go solar before the July 1, 2023 cutoff (known as "legacy customers") will be grandfathered into Duke Energy's current net metering model until December 31, 2026.

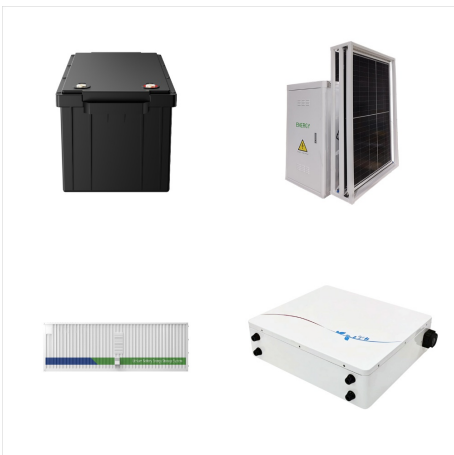


Basically, Duke Energy's solar program is an interconnection policy. Solar interconnection involves connecting a home's solar system to its local utility grid. This allows you to tap into the grid during periods of low solar ???

# DUKE ENERGY SOLAR INTERCONNECTION



Duke Energy has more than 25,000 rooftop solar customers in the Carolinas and continues to see healthy and steady growth in that sector along with a quick and efficient interconnection process. Share Related Posts



Resolves actual and potential disputes concerning 100+ Final Accounting Reports for older distribution-level solar Interconnection Requests that completed construction from 2018 ??? 2020 Overall, Duke Energy has more than 3,500 MW of solar capacity connected to its energy grid in the Carolinas ??? roughly the amount to serve more than



Flexible interconnection service could sharply reduce the time and cost it takes to bring power supplies online, according to a study from Duke University scholars being discussed at a Federal Energy Regulatory Commission workshop. "This [study] offers a very clear, quantitative analysis on the potential benefits of flexible interconnection service that just hasn't ???

# DUKE ENERGY SOLAR INTERCONNECTION



Interconnection on Solar Integration: A Case Study  
Prepared for: FERC Innovations and Efficiencies in  
Generator Interconnection Staff-Led Workshop.  
August 26, 2024. Solar NRIS vs. ERIS in Duke  
Energy Progress. DEP assigns near -zero capacity  
value (ELCC) to new solar generators, primarily due  
to the utility's winter -peaking system and



Providing energy-only interconnection service to a  
1.9-GW Duke Energy solar cluster could reduce grid  
upgrade costs by 72%, according to a study being  
discussed at a FERC workshop Tuesday.



Duke Energy Carolinas (DEC) and Duke Energy  
Progress (DEP) customers that are able to file an  
interconnection application before October 1, 2023,  
will be grandfathered into the current solar net  
metering rate structure instead of having to move to  
Duke Energy's Net Metering 2.0 policy, which will  
have complex and costly Time-of-Use (TOU



# DUKE ENERGY SOLAR INTERCONNECTION



Dive Insight: Duke is still trying to work through the growing pains that go along with rapid solar expansion ??? just ask Hawaii, which faced similar interconnection issues last year. But in



Interconnection is the complex process of connecting new electricity generators ??? like wind, solar and energy storage ??? to the electric grid. To help maintain the safety, reliability and power quality of the electric power system, all utility-connected distributed energy projects must undergo a series of impact studies before they can be built.



Yes Solar Solutions Office: 919-459-4155  
interconnections@yessolarsolutions .  
NCSolarRebate@duke-energy Duke Renewables  
Center: 866-233-2290. Next Rebate Application.  
Watch this space for more information about  
applying for the Duke Energy Solar Rebate  
application in July 2021 or let us know to add you to  
our information emails.

# DUKE ENERGY SOLAR INTERCONNECTION



In March 2023, the North Carolina Utilities Commission (NCUC) approved a proposal that will revise Duke Energy's current net metering policy. The proposal was initially made in 2021, brought on by laws requiring utilities to reevaluate their net metering policies, and features modifications to how solar customers are billed.



Duke Energy created a Solar Bill Savings Estimator calculator for customers to use to determine which rate fits them best. Similar to the changes to residential NEM, customers who submitted interconnection requests prior to these implementation dates will be allowed to stay on the Legacy Net Metering rate for 10 years (October 1, 2033, for



The settlement only involves utility-scale solar facilities and not residential solar owners. Duke Energy has more than 25,000 rooftop solar customers in the Carolinas and continues to see healthy and steady growth in that sector along with a quick and efficient interconnection process. News item from Duke Energy

# DUKE ENERGY SOLAR INTERCONNECTION



PowerPair sm from Duke Energy provides incentives for customers who want to combine the savings of solar power with the reliability and security of backup battery storage. Qualifying PowerPair sm installations may be eligible for the following one-time incentives: \$0.36/watt-AC for solar panel installation up to 10 kW-AC; \$400/kWh for battery storage installation up to 13.5 kWh



A Duke Energy Trade Ally will help you select your system to ensure it meets the PowerPair requirements and provide you with a cost estimate. Submit an Interconnection Request Work with your Trade Ally to complete the Interconnection Request and select a preferred rider that will allow you to connect your system to the grid.



SOLAR: Duke Energy and solar developers in the Carolinas reach a major agreement to clear a backlog of interconnection requests and reform the process for connecting to the utility's grid. (PV Magazine) ALSO: Arkansas school districts are installing solar projects that will cut energy costs, reduce carbon emissions, and provide educational opportunities.

# DUKE ENERGY SOLAR INTERCONNECTION



Duke originally submitted its proposal to update interconnection procedures in the two states in May. In recent years, a glut of solar has clogged Duke's queue, and the utility was unable to



Most home solar systems are considered "Tier 1" systems by Duke Energy and require no application fee and a simple interconnection process. If a system is over 10 kW in size, there is a fee of \$240, and proof of \$1 million in general liability coverage is required. \$1 million in general liability insurance on a homeowner's policy is



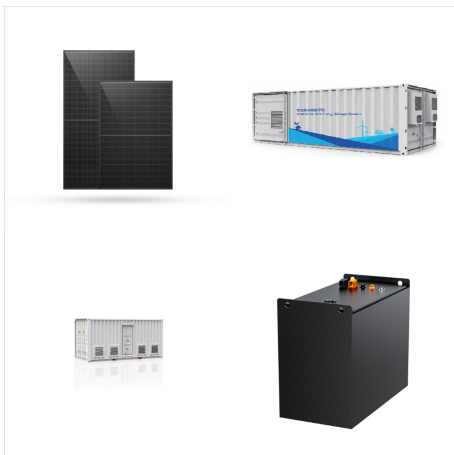
To help clear a backlogged interconnection queue, as ordered by North Carolina regulators, Duke Energy has proposed a plan for "cluster" processing of utility-scale solar interconnection applications. Under Duke Energy's current one-at-a-time process, the queue would take "decades" to process, a Duke witness estimated last year.



# DUKE ENERGY SOLAR INTERCONNECTION



All fees are to be submitted through the Duke Energy Interconnection Customer Portal; All items listed above must be submitted by the Proposal Due Date - September 29, 2023 at noon ET for third-party sponsored proposals. Storage roundtrip losses that pertain to charge coming from solar energy will be netted out of solar generation (thus



This security will be released by Duke Energy in the event the PPA is terminated due to excess network upgrade cost. The form of security will impact the timeline for its release. Question: If an MP is bidding SPS into the 2024 RFP, should they submit a Solar-Only interconnection request to the RSC including the SPS configuration documents



??? On March 23, 2023, changes to Duke Energy's NC solar net metering policy were approved. "Net metering" is an interconnection model that outlines how you pay for the energy you consume and are credited for the solar energy you produce. With net metering, as the homeowner, you receive a 1:1 credit for all of the energy your solar