



The DuroMax XP13000HX Dual Fuel Portable HX Generator is the Perfect Solution for Powering Your Home During a Power Outage With 13,000 watts of power, this generator can power most household appliances, including lights, refrigerators, and air conditioners. It also features a CO Alert system that will automatically shut down the generator if it detects dangerous levels of ???



This unit provides the power normally found in stationary home standby generators but in a more affordable, portable package. With a 439 cc OHV Duromax Engine, this workhorse is PERFECT for HOME BACK-UP and can power most household essentials such as lights, appliances and even central A/C systems during any power outage, storm or emergency event.



This dual fuel inverter generator will power your WHOLE home with ease. The XP16000iH comes equipped TWO 50 amp plugs, allowing for easy and full power with a generator interlock or transfer switch. DuroMax Power Equipment: Engine Type: 4-Stroke: Valve Type: OHV: Engine Cooling Type: Forced Air: Engine Size: Fuel Tank Capacity Gasoline

DUROMAX POWER SYSTEMS FUEL TANK



XP8500E Specifications Gasoline Peak Wattage 8,500 Running Wattage 7,000 Running Amperage at 120V 58.33 Running Amperage at 240V 29.17 Runtime at 25% Load 25 Runtime at 50% Load 12 Engine & Emission Specifications Engine Manufacturer DuroMax Power Equipment Engine Type 4-Stroke Valve Type OHV Engine Cooling Type Fo



DuroMax Power Equipment is the manufacturer of DuroMax portable generators, engines, water pumps, and pressure washers. All powered by the powerful DuroMax engine, these products are rugged, durable, and dependable. Built for activities including home backup, jobsite, recreation, camping, RV use, and more.

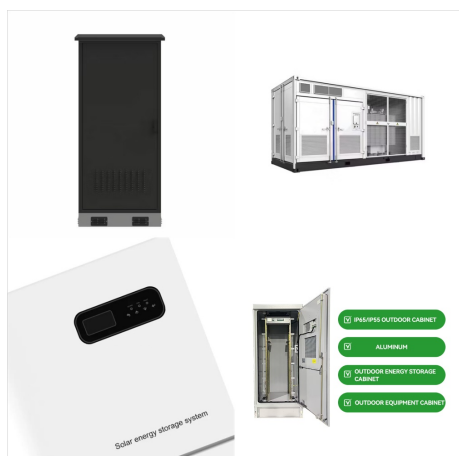


Fuel Filter Cup - Traps dirt and debris in gasoline before it enters the engine. 16. Fuel Valve - On/Off Valve that allows fuel into the engine. 17. Spark plug ??? Provides ignition to the engine. 18. Muffler ??? Reduces engine emissions and reduces noise. 19. Power Boost ??? DuroMax exclusive Power Boost doubles the amperage available in

DUROMAX POWER SYSTEMS FUEL TANK



Largest single cylinder dual fuel 15,000-Watt generator on the market has arrived introducing the brand new XP15000HX from DUROMAX with 15,000-Watt of dual fuel portable power, this unit will power your whole home and all of your essentials during any power outage



About This Product. The DUROMAX XP652WX is the 2 in. version of our powerful dual fuel semi-trash water pump line, this water pump's 212cc 4-stroke OHV engine can push water at an incredible 158 GPM and drain a 40,000 Gal. pool in only about 4.5-hours.



Step 2 - Check the gas level Check Fuel Level
Before starting the generator, check to see that there is sufficient gasoline in the fuel tank. The fuel gauge on top of the tank will give a rough estimate of the gasoline level. The gauge will appear white then fill red as the tank is filled. Page 24: Starting The Generator

DUROMAX POWER SYSTEMS FUEL TANK



How to Start a DuroMax Generator After tirelessly researching you've finally come to a decision and completed the first step to power independence by purchasing a DuroMax generator, but if this is your first experience with a generator you might be scratching your head on how to get the generator running.



Conquer Power Outages With The Unmatched DuroMax XP13000EH Generator: 13,000 Watts of Pure Power and Convenience Never be left in the dark again. Fuel Delivery System: Carburetor: Fuel Types: Gasoline and Propane: Oil Cooling Type: Splash: Fuel Tank Capacity Gasoline: 8.3 Gallons: Fuel Gauge: Yes: All Metal Construction: Yes: Product



All installation instructions for all Pinellas Power Products kits are in an easy to follow step by step video, on a (USB flash-drive) included in each kit. Based on manufacturer fuel consumption claims with a 6 gallon fuel tank you can run a DuroMax XP9000iH up to 6 hours at full load or 13 hours at half load before alternating to the next

DUROMAX POWER SYSTEMS FUEL TANK



Fuel Tank 6. Power Panel 4. Fuel Valve 3. Choke Lever 7. Handles 8. Battery 2. Air Cleaner 1. Recoil Start 9. (iii) Spark advance/retard system. PAGE 80. CUSTOMER SERVICE Duromax Power Equipment is committed to ensuring that our products perform when they need to. Our generators are your lifeline in the event of an emergency. Should you



Fuel Tank Capacity (gal.) 7.1 gal. Fuel Technology. Dual Fuel. It has been 2 years now and I have maintained the system without a serious power outage during hurricane Helene. This "dual fuel" system does not run on propane. DuroMax Engine. Fuel Technology. Dual Fuel. Dual Fuel. Dual Fuel. Dual Fuel. Running Wattage. 7600. 3600. 7500



Introducing the LARGEST Dual Fuel Digital Inverter Generator Available! The DuroMax XP16000iH features 16,000 watts of clean sine wave power in a portable package. This inverter will power your WHOLE home with ease. The XP16000iH comes equipped TWO 50 amp plugs, allowing for easy and full power with a generator interlo

DUROMAX POWER SYSTEMS FUEL TANK



DS10000E Specifications Gasoline Peak Wattage 10,000 Running Wattage 8,000 Running Amperage at 120V 66.67 Running Amperage at 240V 33.33 Runtime at 25% Load 22 Runtime at 50% Load 10 Engine & Emission Specifications Engine Manufacturer DuroStar Power Equipment Engine Type 4-Stroke Valve Type OHV Engine Cooling Type



XP10000EH Specifications Gasoline Peak Wattage 10,000 Running Wattage 8,000 Running Amperage at 120V 66.67 Running Amperage at 240V 33.33 Runtime at 25% Load 22 Runtime at 50% Load 10 Propane Peak Wattage 9,500 Running Wattage 7,600 Running Amperage at 120V 63.33 Running Amperage at 240V 31.67 Runtime at 25% Load 17 Ru



Now you can just switch from one remote fuel tank to the next more safely at a distance of up to 10 feet from your generator. Our kits are specifically developed to work correctly with each generator, they are not a through the cap one size fits all gravity feed version. DuroMax XP9000iH Extended Run Time Fuel Kit \$ 287.00 View Product

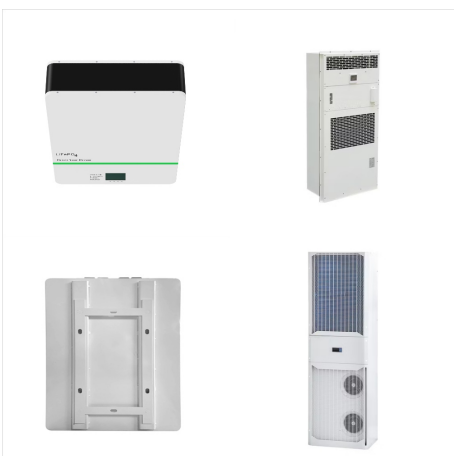
DUROMAX POWER SYSTEMS FUEL TANK



Thank you for purchasing a DuroMax Power Equipment product. Please register your product below to be informed of any updates over the life of your product. In addition to taking full advantage of your warranty, you will also help to expedite any service or parts inquiries you may have when contacting us. You also will



Watt Generator. The DuroMax XP1300HXT fuel tank holds 8.3 gallons of gasoline and provides up to 8.5 hours of runtime at 50 percent load. With a 40-pound propane tank, the generator runs up to 6.5 hours at 50 percent load. Fuel use varies with the electrical load. Use a 60-pound or larger LP Propane tank for longer run times.



V DC battery that powers the electric start system. Page 17 18. 12V DC 11. Low Oil Alert ??? Will light only if the generator shuts down due to low oil. 12. Power Boost ??? DuroMax exclusive Power Boost doubles the amperage available in "120V Only" for heavy loads like RV air conditioners. Page 18: Package Contents

DUROMAX POWER SYSTEMS FUEL TANK



Manuals Brands Duromax Manuals Outdoors Rv
Grade 4,400-Watt 7.0 Hp Gasoline Powered
Generator with Electric IfiM DLrCJ NEXT
GENERATION IVISI~ POWER SYSTEMS Gasoline
Powered Generator Owner's Manual XP4400
XP4400E D D customer_service@maxtool or call
1-800-629-3325 (option 3) Monday -Thursday 6am
to 7pm, Friday - Saturday 6am to 3pm



The DuroMax XP12000EH is a portable home
backup generator that's designed to power most of
the devices within a home during a power outage.
This generator has a maximum output of 12,000W
with a



DuroMax Power Equipment is the manufacturer of
DuroMax portable generators, engines, water
pumps, and pressure washers. All powered by the
powerful DuroMax engine, these products are
rugged, durable, and dependable. Built for activities
including home backup, jobsite, recreation,
camping, RV use, and more.

DUROMAX POWER SYSTEMS FUEL TANK



All installation instructions for all Pinellas Power Products kits are in an easy to follow step by step video, on a (USB flash-drive) included in each kit. Based on manufacturer fuel consumption claims with a 6 gallon fuel tank you can run a DuroMax XP11000iH up to 5 hours at full load or 10 hours at half load before alternating to the