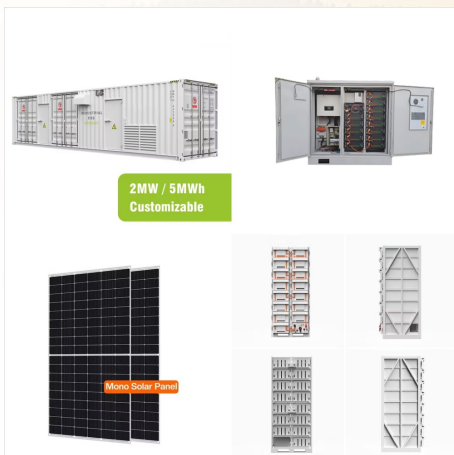




The Heard and McDonald Islands are interesting from a historical perspective because they are one of the few places in the world where two claim lines intersect. There is an ongoing dispute between Argentina and Chile over who has sovereignty over these islands. as well as dynamic glacial changes in the coastal and underwater environment



Many vascular plants are also found on the Heard and McDonald Islands. Elephant seals in Heard Island. Image source: Heard Island Expedition/laikolosse/Flickr. The main native fauna of the Heard and McDonald Islands include several insects along with large populations of seals, penguins, petrels, albatrosses, and other seabirds.

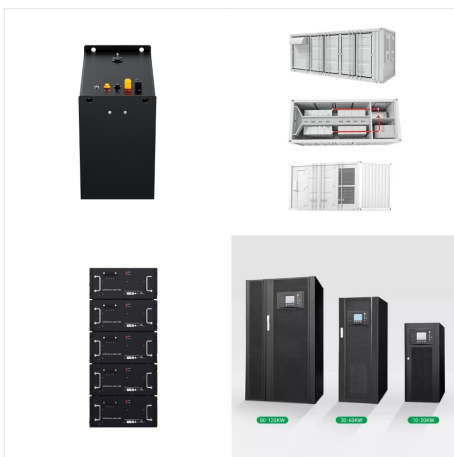


Flag of Heard Island and McDonald Islands: This Australian external territory does not have an official flag but is often represented by the flag of Australia, which is a blue field with the Union Jack in the canton, and a large white seven-pointed star below it, ???

# DYNAMIC SOLAR HEARD AND MCDONALD ISLANDS



Management plans also explain what the objectives are for managing the area, and what the managers will do to help meet those objectives.. It is a requirement of the Environment Protection and Biodiversity Conservation Act 1999 (the EPBC Act), under which the Heard Island and McDonald Islands (HIMI) Marine Reserve was declared, that a management plan be prepared ???



? 1/4 ?? 1/4 ?Heard Island and McDonald Islands,?  
1/4 ?HIMI? 1/4 ?,1947,1997? 1/4 ?????? 1/4  
????1600? 1/4 ?1000,3700,???80%, ???



Heard and McDonald Islands: A Comprehensive Guide for Tourists Table of Contents Introduction Geography and History 2.1 Heard Island 2.2 McDonald Islands Climate and Wildlife Travel Information 4.1 How to Get There 4.2 When to Visit 4.3 What to Pack Things to Do and See Safety and Regulations Tips for Responsible Travel Useful Resources 1. Introduction ???

# DYNAMIC SOLAR HEARD AND MCDONALD ISLANDS



The Territory of Heard Island and McDonald Islands [2] [3] (HIMI; [4] ISO 3166 region code: HMD, HM, 334; [5]) is an Australian external territory comprising a volcanic group of mostly barren Antarctic islands, about two-thirds of the way from Madagascar to Antarctica. The group's overall land area is 372 km<sup>2</sup> (144 sq mi) and it has 101.9 km (63 mi) of coastline.



? 1/4 ?? 1/4 ? Heard Island and McDonald Islands, ?  
1/4 ? HIMI? 1/4 ?, 1947, 1997? 1/4 ????? 1/4  
???? 1600? 1/4 ? 1000, 3700, ??? 80%, ???



L'isola Heard e le isole McDonald sono isole disabitate che si trovano nell'Oceano Antartico, a circa due terzi di distanza tra il Madagascar e l'Antartide. Esse costituiscono un territorio esterno australiano dal 1947 e contengono i due soli vulcani attivi presenti sul territorio australiano, uno dei quali (Mawson Peak) ? anche la montagna australiana pi? elevata, con 2.745 metri.

# DYNAMIC SOLAR HEARD AND MCDONALD ISLANDS



Heard Island and McDonald Islands is the only sub-Antarctic island group with almost no human-introduced species. Beyond "the shallows" ??? the case for expanding the reserve When the original reserve was designed it was noted that future management should consider whether sufficient representation of the different kinds of habitats



Heard and McDonald Islands are home to glaciers, wetlands, Australia's only active volcanoes, and diverse and significant populations of penguins, seals and albatrosses. This decision comes after extensive consultation with researchers, conservationists and the fishing industry. The design supports the sustainable, well-established fishery in



The Territory of Heard Island and McDonald Islands [2] [3] (HIMI; [4] ISO 3166 region code: HMD, HM, 334; [5]) is an Australian external territory comprising a volcanic group of mostly barren Antarctic islands, about two-thirds of the way ???

# DYNAMIC SOLAR HEARD AND MCDONALD ISLANDS



The Australian Government has expanded the sub-Antarctic Heard Island and McDonald Islands Marine Reserve, to protect this unique environment.

Heard Island and the McDonald Islands are home to truly unique flora and fauna that survive in a dynamic natural environment dominated by volcanic activity and glaciers.



Heard Island and McDonald Islands are uninhabited, barren, Subantarctic islands in the Southern Ocean, far due south of India and roughly 400 km southeast of Kerguelen of the French Southern and Antarctic Lands. The islands are administered by Australia and listed as a UNESCO World Heritage site. Although it's administered by Australia, the islands are approximately 4,000 ???



Due to the extreme isolation of Heard Island and McDonald Islands (HIMI), together with the persistently severe weather and sea conditions, human activities in the region have been, and remain, limited. Atlas Cove and other minor ???

# DYNAMIC SOLAR HEARD AND MCDONALD ISLANDS



The Territory of Heard Island and McDonald Islands (HIMI; ISO 3166 region code: HMD, HM, 334;) is an Australian external territory comprising a volcanic group of mostly barren Antarctic islands, about two-thirds of the way from Madagascar to Antarctica. The group's overall land area is 372 km2 (144



? 1/4 ?? 1/4 ? Heard Island and McDonald Islands, ? 1/4 ? HIMI? 1/4 ?,1947 ,1997? 1/4 ????? 1/4 ???? 1600? 1/4 ?1000,3700



McDonald Island is much smaller (2.5 km 2 ), about 100 000 years old and totally ice-free, and is predominantly composed of phonolitic rocks. 9, 10 During the campaign, signs of volcanic activity

# DYNAMIC SOLAR HEARD AND MCDONALD ISLANDS



? 1/4 ?? 1/4 ? Heard Island and McDonald Islands,?  
1/4 ?HIMI? 1/4 ?,1947 ,1997? 1/4 ????? 1/4 ????  
1600? 1/4 ?1000,3700



Key Words: Heard Island, McDonald Islands,  
Kerguelen Plateau, volcanism, volcanic activity, Big  
Ben, Laurens Peninsula, plume systems  
INTRODUCTION The Australian Territory of Heard  
Island and the McDonald Islands, centred on Heard  
Island at 53°06"S; 73°32"E, is one of the most  
isolated regions on Earth, lying in the central-



This 3 days itinerary is the perfect guide to the best  
things to see in Heard and McDonald Islands. It  
includes day-by-day activities, travel tips, and the  
top places to visit. Day 1: Arrival and Initial  
Exploration. Morning. Arrive at Heard Island via  
expedition vessel, typically from ???



Due to the extreme isolation of Heard Island and McDonald Islands (HIMI), together with the persistently severe weather and sea conditions, human activities in the region have been, and remain, limited. Atlas Cove and other minor camps distributed across the island. Power is supplied by small diesel generators, solar cells and wind