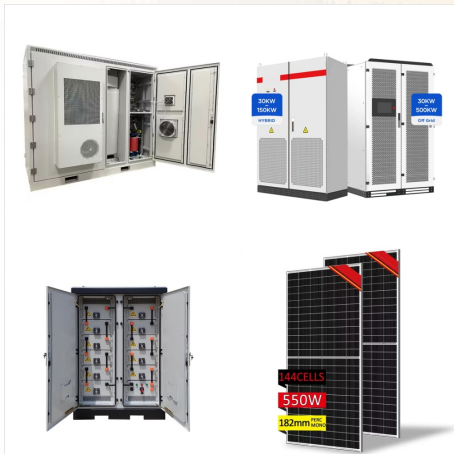




The Furitek SCX24 Stinger Brushless Power System with 1212-3450kv 450kv Brushless Motor is a great way to get a light weight, high torque power system. This incredible combo includes the Furitek Micro Komodo Motor (FTK-FUR-2100).



? Spektrum Avian 4260-800Kv Outrunner Brushless Motor Model: Spektrum XAM4725 Dist. #: SPMXAM4725 SKU: SPMXAM4725 Be the first to review this product. (Write Perfect electrical conversion upgrade for .46 size radiance combustion power systems Important Specifications Advised Voltage Range ??? 18.5-22.2V / 5-6S LiPo Advised Prop Range ??? 10x5



Decrease Quantity of SPMXAM4700 SPEKTRUM Avian 4250-800Kv Outrunner Brushless Motor Increase Quantity of SPMXAM4700 SPEKTRUM Avian 4250-800Kv Outrunner Brushless Motor. Add to Wish List. Perfect electric conversion upgrade for .32 size glow combustion power systems; Specifications. Recommended Voltage Range ??? 11.1-14.8V / 3-4S LiPo

DYNAMITE 800KV BRUSHLESS POWER SYSTEM



Castle's roots are in the remote control hobby industry, where we make the motors and controllers that power enthusiasts' RC cars, helis, planes and boats - since 1997! Our low-weight, high-power brushless DC motor and controller solutions are ideal for those who desire higher efficiency, advanced features and improved optimization.



Decrease Quantity of SPMXAM4725 SPEKTRUM Avian 4260-800Kv Outrunner Brushless Motor
Increase Quantity of SPMXAM4725 SPEKTRUM Avian 4260-800Kv Outrunner Brushless Motor. Add to Wish List Perfect electric conversion upgrade for .46 size glow combustion power systems; Important Specs. Recommended Voltage Range ???
18.5-22.2V / 5-6S LiPo



The new DBXL-E is a large scale off-road machine that comes from the factory complete with it's own Dynamite brushless power system. That means no more rigging your own power system into a 1/5 gasoline machine. Dynamite(R) 800Kv Brushless Power System. The DBXL-E comes equipped with a Dynamite Fuze??? 800Kv brushless motor and a 1/5 8S

DYNAMITE 800KV BRUSHLESS POWER SYSTEM



GForce G32 Brushless Outrunner Motor (4250-800KV) festooks: Electric Power Systems (FS/W) 1: Nov 04, 2018 08:55 AM: Sold: Like new!
Gforce G32 brushless motor 800kv .40 - .46 equivalent: rlake: Electric Power Systems (FS/W) 3: Mar 07, 2018 08:42 PM: Sold: GForce G32 Brushless Outrunner Motor (4250-800KV) daskip87: Electric Power Systems ???



Overview: The Firma 800Kv brushless motor is a perfect option for Arma Roller kits and 1/5 scale bashers and monster trucks with a 3-8S LiPo setup. Featuring a low cog 4-pole design, CNC machined aluminum housing, insulated high purity copper windings, high-quality alloy steel 8mm output shaft, and precision bearings for high durability and

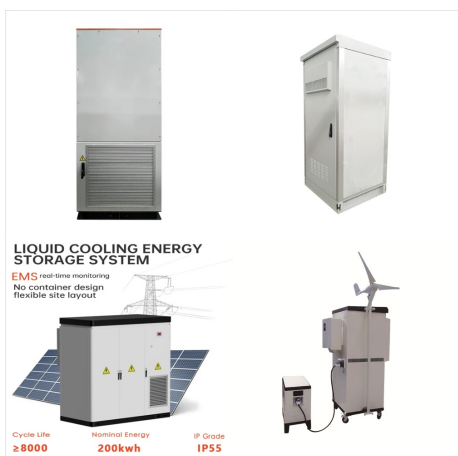


Buy Spektrum Smart Avian 4240-800kv Outrunner Brushless Motor, SPMXAM4670: Complete Motors - Amazon FREE DELIVERY possible on eligible purchases Perfect electric conversion upgrade for .28 size glow combustion power systems; Important Specs. Recommended Voltage Range ??? 11.1-18.5V / 3-5S LiPo; Recommended Propeller ???

DYNAMITE 800KV BRUSHLESS POWER SYSTEM



The system's switch only controls power to the receiver and servos. The system will continue to draw current when connected to the battery, resulting in possible damage to the battery through over-discharge. Receiver Brushless Motor / Speed Control CH1 CH2 Steering Motor Battery Servo Wir danken Ihnen f?r den Erwerb der Dynamite(R) Motor/ESC



The Dynamite(R) power system includes an 800Kv brushless motor along with a 1/5 8S Dynamite Fuze??? brushless ESC. All electronics are waterproofed. The flip top cage is worth mention. It gives drivers quick, easy access to batteries, and provides full roll-cage protection. This model comes equipped with Genuine MAXXIS creepy crawler tires for



EZRun MAX5 V3 Sensorless Brushless ESC & Motor Combo includes the 56113SL 1/5 scale, 800kV motor and is a great option for high-end, aggressively powered, large scale 8S builds. Current at the point of M. 1/5th RC Vehicles, Truck/Dragster. ??? Hobbywing QuicRun Fusion FOC 2-in-1 ESC & Motor System 1800Kv Crawler Waterproof.

DYNAMITE 800KV BRUSHLESS POWER SYSTEM



The DBXL-E sports a huge Dynamite 800kv motor and 8S Fuze Brushless ESC. Together, they provide the power to propel the Desert Buggy to speeds over 50 MPH on 8S LiPo. Dynamite 800Kv brushless power system; Spektrum??? AVC(R) technology; Revised shock package; New wing and wing mount; New wing and wing mount; Waterproof electronics; ???

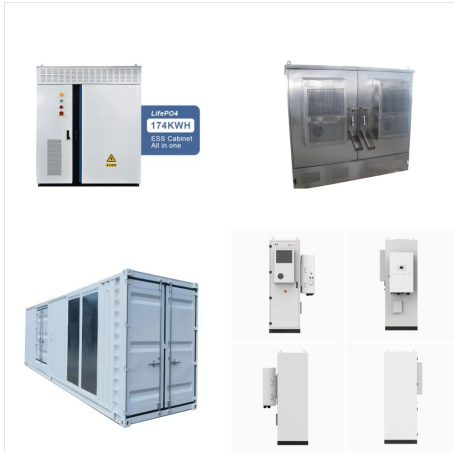


The Dynamite 800kv brushless power system with 8S Fuze brushless controller is good for speeds of up to 80km/h when on 8S power and the built-in Active Vehicle Control system and Spektrum DX2E transmitter ???



Plus, its new centered drivetrain adds efficiency and durability, while the 800Kv motor will rocket you wherever you want to go. The DBXL-E is the definition of next-level awesomeness. Dynamite (R) 800Kv Brushless Power System The DBXL-E comes equipped with a Dynamite Fuze ??? 800Kv brushless motor and a 1/5 8S Fuze Brushless ESC. Together, they

DYNAMITE 800KV BRUSHLESS POWER SYSTEM



In-Depth Features: Dynamite(R) 800Kv Brushless Power System: The DBXL-E comes equipped with a Dynamite Fuze 800Kv brushless motor and a 1/5 8S Fuze Brushless ESC. Together, they will allow you to slingshot across the terrain at speeds of 50+ mph* on 8S power.

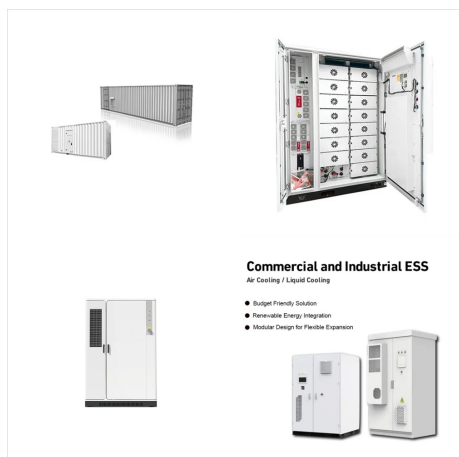


This is the Dynamite Fuze 540 1/10 Scale 4-Pole 3,300kv Brushless Motor. Fuze brushless motors are high-torque motors designed for sport and racing applications. This sensorless motor features the same basic dimension and mounting patterns as brushed standard 540-size motors.



Power Tools & Acc. Paint Brushes & Equipment; Hammers & Pin Pushers; Clamping & Holding; Brushless Systems. Car Brushless Systems; Brushless Motors. Car Brushless Motors; Dynamite 800Kv Db-Xle Brushless Motor - Dyns1665 quantity field. Notify Me. Notify me when back in stock. Your Name.

DYNAMITE 800KV BRUSHLESS POWER SYSTEM



Plus, its new centered drivetrain adds efficiency and durability, while the 800Kv motor will rocket you wherever you want to go. The DBXL-E is the definition of next-level awesomeness. Dynamite (R) 800Kv Brushless Power System The DBXL-E comes equipped with a Dynamite Fuze ??? 800Kv brushless motor and a 1/5 8S Fuze Brushless ESC. Together, they

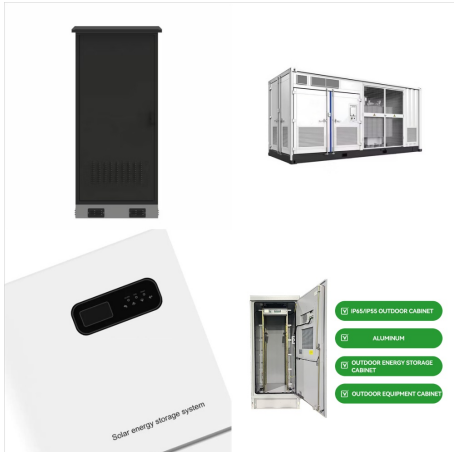


Amazon : Rocket 4092 800KV Brushless RC Boat Motor Surpass Hobby Brushless Motor 4Pole Design Replacement Boat Parts (800kv) : Toys & Games. Power Plant & Driveline Systems ??? Electric Motors & Parts ??? Complete Motors Add to your order . Coverage for accidental damage including drops, spills, and broken parts, as well as breakdowns



-800Kv Outrunner Brushless Motor Take to the Skies with Spektrum Avian Brushless Motors for Fixed-wing Models The combination of superior performance, high reliability and user-friendly features makes the Spektrum Avian Brushless Motors an excellent choice for your next aircraft project. Dynamite Gens Ace E-flite Charge Leads and

DYNAMITE 800KV BRUSHLESS POWER SYSTEM



The Dynamite 800KV 1/5 Brushless Motor is designed to run off of, get this, 8S LiPo power! That is a lot of voltage! The is the same motor used on the new Desert Buggy XL-E, measures 57 x 114mm and comes with the wires with make bullet plugs that go to the speed controller already mounted.



Any enquiries should be addressed to: Attention: Albury RC Models & Hobbies Email: via contact form (on this page) Phone: (61 2) 6025 0497 Postal: 321A Wagga Road Lavington, NSW 2641. INTRODUCTION. Albury RC Models & Hobbies is committed to protecting your privacy and implementing technology that gives you the most powerful and safe online experience.