



Eagle Access Control Systems, Inc. Toll Free:
800-708-8848 13286 Paxton Street Fax:
818-899-2666 Pacoima, CA 91331 POWER-I &
POWER-II BATTERY BACK-UP ? PROVIDES
FULL SYSTEM BACK-UP POWER ? FULLY
OPERATIONAL BATTERY BACK-UP AVERAGE
ADDITIONAL EAGLE GATE APPROXIMATE
CYCLES PER 12 CYCLES WITH ???



The Eagle Eye VGM-100 Battery Voltage and
Ground Fault Monitor is a combination battery
voltage and battery ground fault monitor that reads
battery status, detects out-of-limit conditions, and
provides alarm indications at precise user settings
for 24V, 48V, 125V and 250V systems. The
VGM-100's status, adjustable under voltage and
over voltage trip settings, ground fault, time ???



The Eagle-Power II Battery Back up is designed to
provide back up power to a gate operator when the
main AC supply voltage is interrupted or
disconnected. There are two operations to the
Eagle-Power II. PAGE 3. THE EAGLE POWER II
INFORMATION & WARNINGS The following items
are included with the POWER II: (A) Power II
Control Box (B) 1 - 70 AH



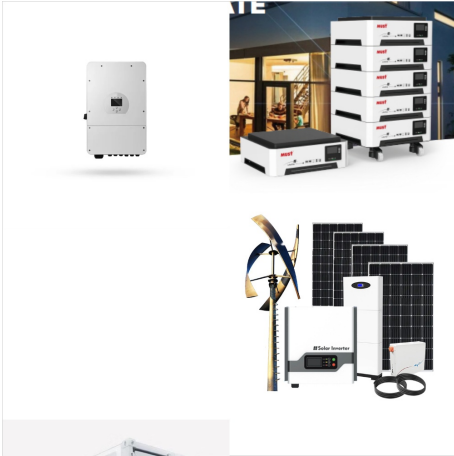
EAGLE MICROSYSTEMS, INC. 366 CIRCLE OF PROGRESS POTTSTOWN, PA 19464 Power Supply 115/230 VAC switch selectable Power Consumption 12W Battery Backup OPTION: short-term (15-min) or long-term (24-hr) available Display LCD, back-lit, 16-characters by 2-line, 5mm character height, 5x8 character matrix ???



The APC BR1500G Backup Battery is pretty large in terms of size. It has five battery backup and surge-protected outlets and another set of five outlets with only surge protection, for a total of ten. However, there are no USB ports to plug in your phone directly. There's also a small backlit LCD that shows plenty of information at a glance.



Use the BQMS battery monitoring system to measure these parameters to protect the integrity of your system, and exceed industry testing requirements by IEEE and NERC. Request a battery monitoring quote online now with your battery monitoring requirements. Alpine Power Systems is a value-added reseller of Eagle Eye products.



The Eagle Eye VM-100 Battery Voltage Monitor is a simplistic & inexpensive battery monitoring system designed to monitor battery string voltage for over and under voltage conditions. The VM-100 Battery Voltage Monitor is used in 24V, 48V, 125V, and 250V applications - and reads battery bus status, detects out-of-limit conditions, and provides alarm indications per user settings.



Eagle Access Control Systems, Inc. Toll Free: 800-708-8848 13286 Paxton Street Fax: 818-899-2666 Pacoima, CA 91331 POWER-I & POWER-II BATTERY BACK-UP ? PROVIDES FULL SYSTEM BACK-UP POWER ? FULLY OPERATIONAL BATTERY BACK-UP AVERAGE ADDITIONAL EAGLE GATE APPROXIMATE CYCLES PER 12 CYCLES WITH ???



The Eagle Eye BTM-Series Battery Temperature / Thermal Runaway Monitor is a dependable low-cost solution to protecting stationary batteries against over-temperature and thermal runaway conditions. Individual sensors are quickly and securely attached to each battery jar and connected in series from the main unit. Each thermal runaway sensor is sealed to an IP68 rated ???



Learn about Eagle Eye's ability to deliver dependable standby power and backup power supply services, products and training! Skip to content. 1-877-805-3377 Eagle Eye Power Solutions, headquartered in Mequon, WI, is driven to Increase Reliability, Decrease Costs and Meet Compliance for its customers. With a strong history in Battery



Battery backup systems are an essential accessory for any gate opener. In the event of a power outage, they provide emergency access to your property. There are two types of battery backups available for gate openers. The first type is a kit that includes a battery, a secondary motor, and a controller that takes over y



The BigBattery 48V EAGLE 2 is a high-performance LiFePO4 lithium battery designed specifically for applications in golf carts, utility vehicles, RVs, and camper vans. With a capacity of 1.63 kWh, this battery provides reliable power and efficiency, making it an ideal choice for those seeking to enhance their mobility solutions. Key Features and Benefits High Energy ???



View online or download Eagle Power II Installation Manual. Sign In Upload. Manuals; Brands; Eagle Manuals; Gate Opener; Battery Back up. Brand: Eagle | Category: Battery Pack | Size: 0.23 MB Eagle Power II Installation & Owner's Manual (9 pages)



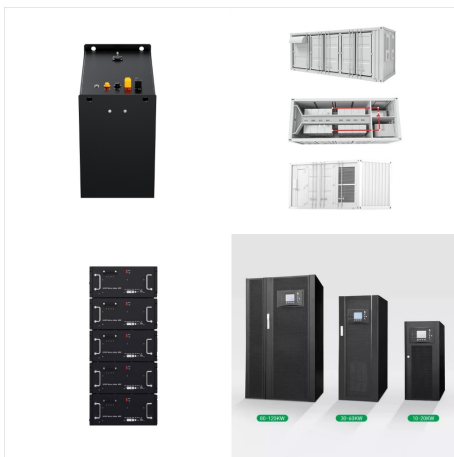
The Eagle Eye BDS-Pro Battery Monitoring System is designed to measure the aging status of up to 24 jars (or 24 cells) by measuring and recording: string voltage and current, as well as jar/cell voltage, internal resistance, connection resistance and temperature. The BDS-Pro Battery Monitoring Solution is the most accurate, user-friendly and economic solution for monitoring 24 ???



From partial to full-house backup SolarEdge Home Battery is there. Backup more switches, sockets, and heavy appliances in an outage with up to 30% more power than any other battery. You're in Control The mySolarEdge is the smart, easy to use app that puts you in control of your energy from battery backup to EV car charging.



DC Residential/Light Commercial Swing Gate Operator The Eagle-1000-DC gate operator comes equipped with a built in battery backup system which will allow the gate to operate at least 100 cycles when power is lost. It features the state of the art DC diamond control board, the most feature packed and installer friendly control



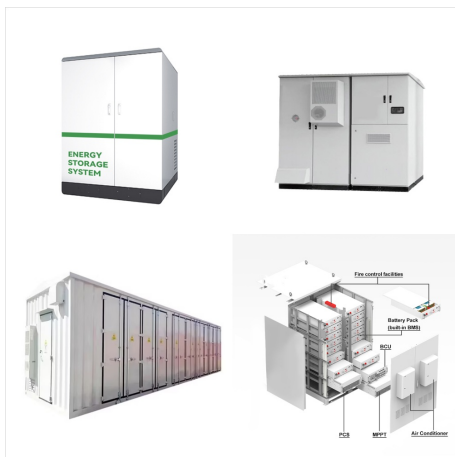
Critical to maintaining a reliable backup battery solution, a battery monitoring system will provide users with the data they need to proactively service or replace a failing battery by measuring key parameters in real-time. Eagle Eye Power Solution's Battery Monitoring Division offers products that identify and measure key parameters as



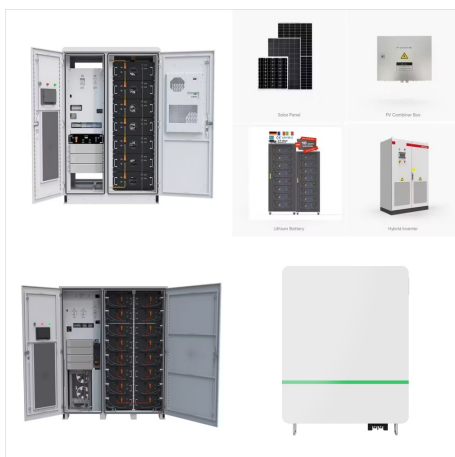
Page 1 INSTALLATION & OWNER'S
INSTALLATION & OWNER'S MANUAL MANUAL
THE EAGLE POWER BATTERY BACK UP PHONE
(818) 764-6690 / TOLL FREE (800) 708-8848; Page
2: Pre-Installation Instructions INSTRUCTIONS.
POWER I SYSTEM. The Eagle-Power I Battery
Back up is designed to provide back up power to a
gate operator when the main AC ???



Battery Residential/Light Commercial Slide Gate Operator Gate Capacity 27" 600 LBS All Eagle DC Gate operators come standard with deep cycle marine batteries for maximum use in the event of a power failure or for in a solar only application. Have questions? Contact our support staff. View All Accessories



Eagle Power Solar has affordable option for Pakistani householders. +92 331 566 5356 Standalone Solar System. 03. Hybrid System. Battery Backup Solar System. 04. Customized Solutions. Why Choose Us. Qualified Expert Our staff members are highly trained and skilled in their working domains.



- Expands from 3.6-25kWh, up to 1 week of power -
- Automatic 20 ms switchover time for uninterrupted power*
- Smart power management with the EcoFlow app -
- Avoid peak power rates to lower energy bills. Uninterrupted backup power supply and smart power management. Take control of your energy and reduce your electricity bills with stored energy.



The Eagle-Power II Battery Back up is designed to provide back up power to a gate operator when the main AC supply voltage is interrupted or disconnected. There are two operations to the Eagle-Power II. Page 3 1 - 12VDC Output (Optional)
1 - Instruction Manual Power II



The Eagle Eye BMS-icom Battery Monitoring System is designed to measure the aging status of up to (4) 12V jars by measuring and recording: string voltage and current, as well as jar/cell voltage, internal resistance, connection resistance and temperature. The BMS-icom is the most accurate, user-friendly and economic solution for monitoring 48VDC systems using (4) 12V ???



Eagle Battery Back- Up : The Eagle Power Battery Back up System allows the normal operation of the gate during power failure. It does comply with UL, the power battery life is 70AH and can be extended to 140AH by adding a twin pack. The Eagle Power Series Battery Back-Up Systems enable an Eagle Operator to remain fully functional during power