

Where can I find information about Eaton's Cooper power series?

For Eaton's Cooper Power series product information call 1-877-277-4636 or visit: Was this manual useful for you?

What is Eaton Cooper Power Systems?

Eaton's Cooper Power Systems patented design reduces the arc energy-- resulting in far less contact erosion and the longest life of any vacuum fault interrupter in the industry. Since there are no expulsion fuses or switching by-products to contaminate the insulation medium, maintenance intervals are greatly increased.

Where is Eaton power systems located?

Eaton 1000 Eaton Boulevard Cleveland, OH 44122 United States Eaton.com Eatons Power Systems Division 2300 Badger Drive Waukesha, WI 53188 United States Eaton.com/cooperpowerseries &#169; 2022 Eaton All Rights Reserved Printed in USA Publication No. CA280013EN February 2022 Catalog Data CA280013EN Effective February 2022

Where did Eaton's Cooper Power Products come from?

Eaton's Cooper Power series product roots come from multiple sources: Kyle, Line Material, McGraw-Edison, RTE, Kearney and Cooper Power Systems, among others. Each company played a key role in the development of modern distribution systems. Many of the common pieces of equipment and practices in use today were developed by these companies.

Who is Eaton power management?

Eaton is an intelligent power management company dedicated to improving the quality of life and protecting the environment for people everywhere. We are guided by our commitment to do business right, to operate sustainably and to help our customers manage power - today and well into the future.

What is Eaton's Cooper Power Systems catalog number?

For example, catalog number USAA060A from Table 3 represents the same catalog number USAA060048A2845A11 from Table 9. Eaton's Cooper Power Systems offers other options that allow customers to select specific features they desire. Options on housing sizes (creepage length), hardware, and

# EATON COOPER POWER SYSTEMS LOCATIONS



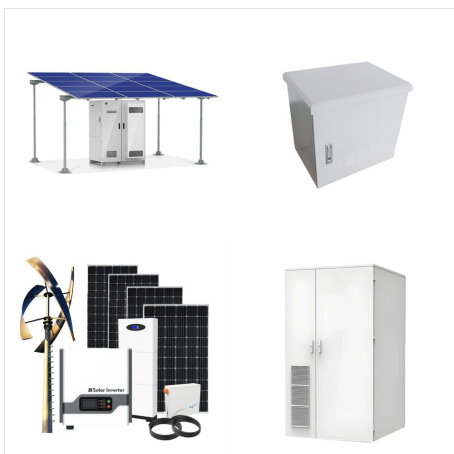
mounting options are available and defined in Table 10.



Low-voltage power distribution & control systems;  
Medium-voltage power distribution & control systems; Plastics; Process safety, automation, test and measurement; Eaton Cooper Power series loadbreak elbow, 200 A, Std V:25 kV, Max phase-to-ground:15.2 kV, AC 1 min:40 kV, DC 15 min:78 kV, Impulse:125 kV, Max corona:19 kV, Test:Yes, 0.75 inch



Select your location Asia; Select your location Central America and Caribbean; Power systems automation and control; Prefabricated electrical systems - integrated design and installation Eaton Cooper Power series T-OP II deadbreak connector, 600A, 15 kV, DC 15 min: 53 kV, AC 1 min: 34 kV, BIL: 95 kV, Min corona: 11 kV, Cable insul: 0.97

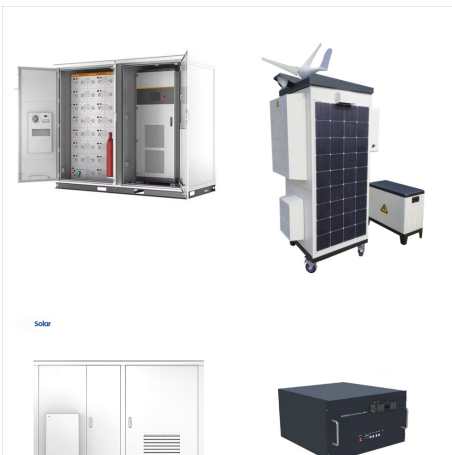


D100 - Eaton Cooper Power series current limiting backup fuse, Under oil, 15.5 kV, 3.0 inch diameter, Distribution C, 150A, 50 kA max interrupt current, 700A min interrupt current, ELSP, 1/4-20 threaded hole both sides

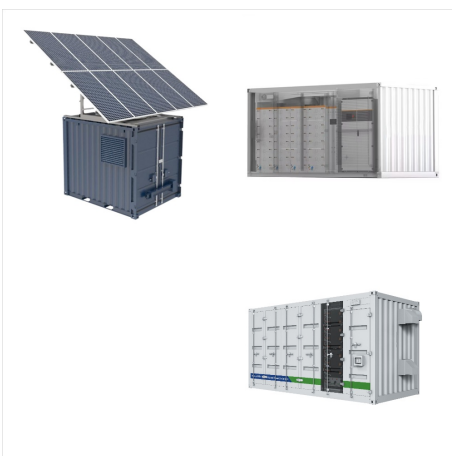
# EATON COOPER POWER SYSTEMS LOCATIONS



Low-voltage power distribution & control systems;  
Medium-voltage power distribution & control  
systems; Plastics; Process safety, automation, test  
and measurement; Eaton Cooper Power series  
loadbreak junction. Catalog Number. LJ215C3U.  
UPC. 194006014052. Product Length/Depth.  
Location Type; Products; Medium-voltage power  
distribution



? Hazardous locations: Eaton Power Systems  
Experience Center (PSEC) engineer discusses  
hazardous location division system as required in  
NEC article 500. Video Home. Follow us: Cooper  
Power series Similar Videos. Similar Videos. 65 - Is  
the utility sending me harmonics? 3:45.



USA, Wisconsin: Eaton announced it will invest \$ 54  
million in its Waukesha-based Cooper Power  
Systems business in Wisconsin. Eaton plans to  
expand Badger Drive manufacturing plant and  
upgrade technology at its Badger Drive, North  
Street and Lincoln Avenue Power Systems plants.

# EATON COOPER POWER SYSTEMS LOCATIONS



At this location, Eaton Cooper Power Systems employs approximately 50 people. This business is working in the following industry: Hardware stores. Annual sales for Eaton Cooper Power Systems are around USD 500,000 - 999,999. You can contact Tom ???



A1A1A1A - Eaton Cooper Power series arrester, Poly housing, 2.55 kV, 3 kV, No line term wire, Sil BRZ nut, SS wire clamp and cap, Iso, Wire clamp with sil BRZ nut, Insulated hanger, No brkt, HD, VariSTAR



COOPER POWER SYSTEMS | 3238018C10M  
Eaton Cooper Power series elbow, 15 kV, 200A loadbreak, MCOV: 8.4 kV, Duty cycle: 10 kV, Ground lead: 36 inch, #4 AWG copper lead Anixter orders do not currently ship to addresses outside the United States or military/government APO/FPO locations. We are also not able to ship to Post Office Box ???



# EATON COOPER POWER SYSTEMS LOCATIONS



Diversified power management company and global technology leader in electrical systems for power quality, distribution and control; hydraulics components, systems and services for industrial and mobile equipment; aerospace fuel, hydraulics and pneumatic systems for commercial and military use; and truck and automotive drivetrain and powertrain systems for performance, fuel ???



? Hazardous locations: Eaton Power Systems Experience Center (PSEC) engineer discusses hazardous location division system as required in NEC article 500. Video Home. Follow us: Cooper Power series Similar Videos. Similar Videos. 65 - Is the utility sending me ???

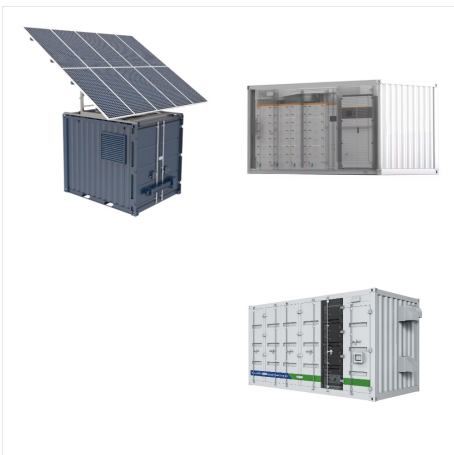


Eaton s Greenwood, SC facility on Emerald Road is setting the standard for sustainability in Eaton s Power Systems Division. The location is the production facility for Eaton s power capacitor and network protector product lines. This site has continually demonstrated its focus on sustainability activities and minimizing its environment impact.

# EATON COOPER POWER SYSTEMS LOCATIONS



Hundreds attended the groundbreaking ceremony for an EATON/Cooper Power Systems production facility expansion in Nacogdoches. By Mariela Gonzalez Published : Oct. 16, 2023 at 2:27 PM CDT | Updated



Low-voltage power distribution & control systems; Medium-voltage power distribution & control systems; Plastics; Process safety, automation, test and measurement; Eaton Cooper Power series M-Force three-phase switch, 15.5 kV, 900A, 110 kV, 2.25" BC, 28" round pipe 1.0" O.D., Sil rub, Stl - 1 pt It, Horiz pole top, Recip Show locations



Eaton's Cooper Power series VFI substation transformer combines a conventional distribution transformer with a vacuum fault interrupter (VFI) ??? delivering both voltage transformation and transformer overcurrent protection in a single space- and money- saving package. Transformers intended for indoor use are filled with safe, efficient FR3 dielectric fluid, offering enhanced fire ???

# EATON COOPER POWER SYSTEMS LOCATIONS



Eaton Cooper Power Systems LLC and the Nacogdoches Economic Development Corporation (NEDCO) announce the expansion of the Eaton manufacturing facility at 2315 SE Stallings Drive. Eaton plans to invest over \$100 million dollars to build an additional 243,000 square foot facility to manufacture voltage regulators. State and local partners have been ???



Power in Focus features the best of our Experience Centers' hands-on training in an online setting. Learn the designs, technologies and installation best practices for today's most advanced power applications???and get credit for it with professional development hours from the Registered Continuing Education Program (RCEP) for select training courses.

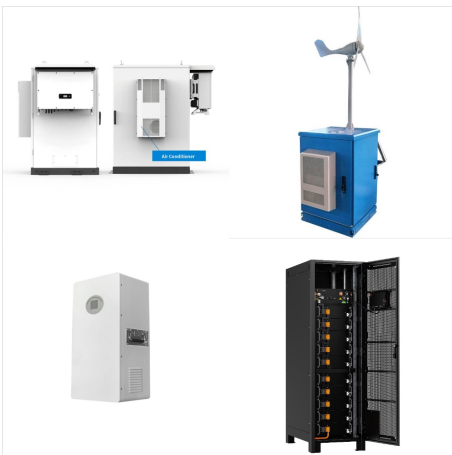


Low-voltage power distribution & control systems; Medium-voltage power distribution & control systems; Plastics; Process safety, automation, test and measurement; Eaton Cooper Power series deadbreak two-way junction, Deadbreak, EPDM rubber external/insulation, aluminum internal current-carrying parts, SS bracket, 15/25 kV, BIL: 125 kV, 600

# EATON COOPER POWER SYSTEMS LOCATIONS



Eaton offers various Cooper Power series product maintenance, testing and troubleshooting courses as well as training and collaboration events. These events offer integration insights toward maximizing existing products while introducing industry trends, new technologies, regulations and system requirements.



Partner locator. Use this locator to quickly find Eaton distributor near you. If you are unable to find what you are looking for then click here. Eaton is an intelligent power management company ???



Check with Eaton's Cooper Power Systems for the availability of other dielectric coolants in single-phase, pad-mounted transformers. Single-phase overhead transformers Eaton 1000 Eaton levelan 44122 nite tate Eaton's Cooper Power Systems Business 200 aer Drive Waeha 188 nite tate erwer 2014 Eaton II iht eerve Printe in A Plicatin



# EATON COOPER POWER SYSTEMS LOCATIONS



Eaton's comprehensive line of Cooper Power series open air bank solutions are available in externally fused, fuseless or internally fused designs. Each design is custom-configured in a variety of parallel/series combinations to meet a full range of application needs based on kvar requirements, system voltage, protection strategy and system solutions.



Search by City/State or Zip Code to find a location near you. Eaton Cooper Power Systems. Selection will refresh the page with new results. SHOP BY. Stocked to Ship 63146. Filter by Category. Category. Fuses (151) Electrical Distribution Equipment ???



"The expansion of Eaton's Cooper Power Systems location in Nacogdoches is a major win for hardworking East Texans, bringing hundreds of good-paying jobs and millions in capital investment to the community. Growing Texas' capabilities in this industry supply chain and investing in energy infrastructure is critical to cementing our state's

# EATON COOPER POWER SYSTEMS LOCATIONS



Select your location Asia; Select your location Central America and Caribbean; Power systems automation and control; Prefabricated electrical systems - integrated design and installation Eaton Cooper Power series loadbreak rotatable feedthru insert, EPDM rubber, 15 kV, Phase to ground: 8.3 kV, AC 1 min: 34 kV, DC 15 min: 53 kV, BIL: 95



Low-voltage power distribution & control systems; Medium-voltage power distribution & control systems; Plastics; Process safety, automation, test and measurement; Eaton Cooper Power series loadbreak elbow crimp connector, One-hole, Pad: Cu, Sleeve: Aluminum, 1/0 AWG, 50 mm? concentric or compressed, 2/0 AWG, 70 mm? compact or solid



When it used to be Cooper Power Systems it was a great company to work for. Now that eaton took over they are very unethical, treat seniority people like trash. And if you have a preexisting medical condition they do not care and will replace you. Other Eaton locations. 3.5. Greenwood, SC 3.5 out of 5 stars. 3.5. Sumter, SC 3.5 out of 5

# EATON COOPER POWER SYSTEMS LOCATIONS



Low-voltage power distribution & control systems;  
Medium-voltage power distribution & control  
systems; Plastics; Process safety, automation, test  
and measurement; Eaton Cooper Power series  
flipper assembly. Catalog Number. CCB140Y1ASM.  
UPC. 786689708078. Product Length/Depth.  
Location Type;



Low-voltage power distribution & control systems;  
Medium-voltage power distribution & control  
systems; Plastics; Process safety, automation, test  
and measurement; Eaton Cooper Power series  
connecting plug, 35 kV, EPDM rubber, Phase to  
ground: 21.1 kV, AC 1 min: 50 kV, DC 15 min: 103  
kV, BIL: 150 kV, Corona: 26 kV, Thread size:  
5/8-11, Cap



Eaton is an intelligent power management company  
dedicated to improving the quality of life and  
protecting the environment for people everywhere.  
We are guided by our commitment to do business  
right, to operate sustainably and to help our  
customers manage power ??? ???