

Are ebrpss employees eligible for a 403B or 457 plan?

If you are a full time employee with EBRPSS, you are eligible to participate in a voluntary 403B or 457 Plan. EBRPSS does not contribute to these plans. It is 100% employee contributions. What is a 403B Plan? A 403B Plan is a tax-deferred retirement plan available to employees of public educational institutions and certain tax-exempt organizations.

What benefits does ebrpss offer?

It is our privilege to offer you the wide range of valuable health and wellness benefits, including affordable options for everything from medical, prescription drug and dental, to life insurance and disability benefits. EBRPSS is proud to offer the following comprehensive benefits package to all full-time employees.

When is ebrss open enrollment?

Open enrollment will be held from October 3rd through the 31st. Employees are highly encouraged to schedule a time to speak with a Benefit Counselor to review plan options and for assistance with enrolling. Schedule your appointment today by visiting



%PDF-1.7 %uuuu 1 0 obj >/Metadata 1602 0
R/ViewerPreferences 1603 0 R>> endobj 2 0 obj >
endobj 3 0 obj >/ExtGState
>/ProcSet[/PDF/Text/ImageB/ImageC/ImageI

EBR SCHOOL SYSTEM STEAM POWER



HELIX MENTORSHIP STEAM ACADEMY. 9-12.
339 Florida St. Baton Rouge, LA 70801. Principal:
Angela Domingue. 225.346.5180. The East Baton
Rouge Parish School System and all of its entities
(including Career and Technical Education
Programs) do not discriminate on the basis of age,
race, religion, national origin, disability, or gender in its



The East Baton Rouge Parish School System and
all of its entities (including Career and Technical
Education Programs) do not discriminate on the
basis of age, race, religion, national origin, disability,
or gender in its educational programs and activities
(including employment and application for
employment), and it is prohibited from discriminating
on the basis of gender by ???



The East Baton Rouge Parish School System and
all of its entities (including Career and Technical
Education Programs) do not discriminate on the
basis of age, race, religion, national origin, disability,
or gender in its educational programs and activities
(including employment and application for
employment), and it is prohibited from discriminating
on the basis of gender by ???

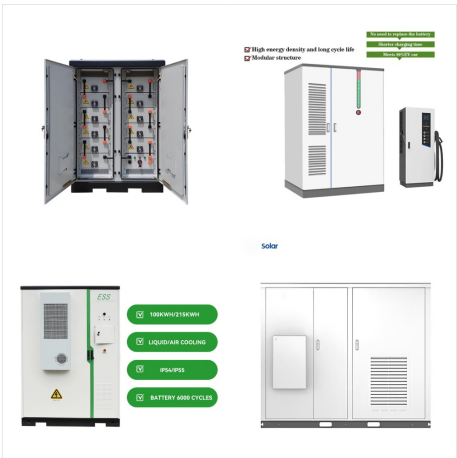
EBR SCHOOL SYSTEM STEAM POWER



The East Baton Rouge Parish School System and all of its entities (including Career and Technical Education Programs) do not discriminate on the basis of age, race, religion, national origin, disability, or gender in its educational programs and activities (including employment and application for employment), and it is prohibited from



The East Baton Rouge Parish School System and all of its entities (including Career and Technical Education Programs) do not discriminate on the basis of age, race, religion, national origin, disability, or gender in its educational programs and activities (including employment and application for employment), and it is prohibited from discriminating on the basis of gender by ???



Welcome to the East Baton Rouge Parish Online School Payments (OSP) portal. This service is provided to parents and community members to facilitate payment for school fees for a variety of products and services. For further information or to request additional information, please contact your school's main office.

EBR SCHOOL SYSTEM STEAM POWER



Helix Mentorship STEAM Academy (PDF) IDEA Charter (PDF) Inspire Charter Academy (PDF) Mentorship Legal Academy (PDF) 12 was created by East Baton Rouge Parish School System (EBRPSS), in conjunction with the Louisiana Department of Education, to help identify academically gifted children. Instruction is differentiated according to the



The East Baton Rouge Parish School System and all of its entities (including Career and Technical Education Programs) do not discriminate on the basis of age, race, religion, national origin, disability, or gender in its educational programs and activities (including employment and application for employment), and it is prohibited from discriminating on the basis of gender by ???



THE EBR-II STEAM GENERATING SYSTEM ??? OPERATION, MAINTENANCE, AND INSPECTION
1. INTRODUCTION Experimental Breeder Reactor II (EBR-II) has operated for 20 years at the Idaho National Engineering Laboratory near Idaho Falls, Idaho. EBR-II is a pool-type liquid metal fast breeder reactor (LMFBR) with integrated power plant.

EBR SCHOOL SYSTEM STEAM POWER



The East Baton Rouge Parish School System and all of its entities (including Career and Technical Education Programs) do not discriminate on the basis of age, race, religion, national origin, disability, or gender in its educational programs and activities (including employment and application for employment), and it is prohibited from discriminating on the basis of gender by ???



The East Baton Rouge Parish School System and all of its entities (including Career and Technical Education Programs) do not discriminate on the basis of age, race, religion, national origin, disability, or gender in its educational programs and activities (including employment and application for employment), and it is prohibited from



Dear East Baton Rouge Parish Families, I hope this message finds you safe and well following the impact of Hurricane Francine. The East Baton Rouge Parish School System and all administrative sites will reopen tomorrow, Friday, Sept. 13, 2024. However, we are still monitoring the following sites due to lingering power outages: Glasgow Middle and Westdale Middle.

EBR SCHOOL SYSTEM STEAM POWER



The East Baton Rouge Parish School System and all of its entities (including Career and Technical Education Programs) do not discriminate on the basis of age, race, religion, national origin, disability, or gender in its educational programs and activities (including employment and application for employment), and it is prohibited from discriminating on the basis of gender by ???

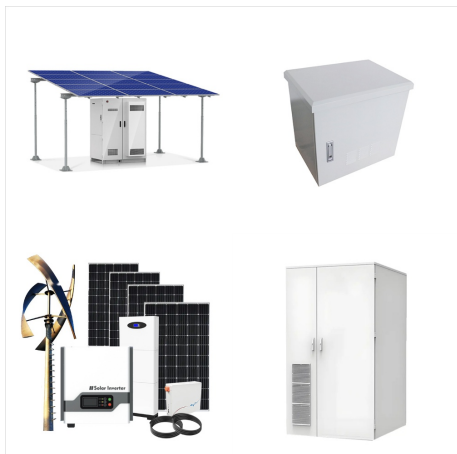


The East Baton Rouge Parish School System and all of its entities (including Career and Technical Education Programs) do not discriminate on the basis of age, race, religion, national origin, disability, or gender in its educational programs and activities (including employment and application for employment), and it is prohibited from discriminating on the basis of gender by ???



The East Baton Rouge Parish School System and all of its entities (including Career and Technical Education Programs) do not discriminate on the basis of age, race, religion, national origin, disability, or gender in its educational programs and activities (including employment and application for employment), and it is prohibited from

EBR SCHOOL SYSTEM STEAM POWER



East Baton Rouge Parish School System's Aramark Energy management Team. For more information please contact us at 225-226-3723, or savoie-don@aramark East Baton Rouge Parish School System was one of only six K-12 school districts in the country to be

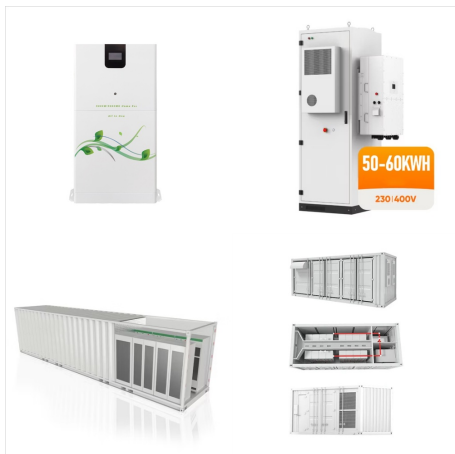


The East Baton Rouge Parish School System and all of its entities (including Career and Technical Education Programs) do not discriminate on the basis of age, race, religion, national origin, disability, or gender in its educational programs and activities (including employment and application for employment), and it is prohibited from discriminating on the ???



Power Parent The guidance below can help us all make the to let off steam. Moving (independently and together as a family) is vital to health, well-being, and readiness for learning. It's a great opportunity to practice exercising East Baton Rouge Parish School System into FOCUS"

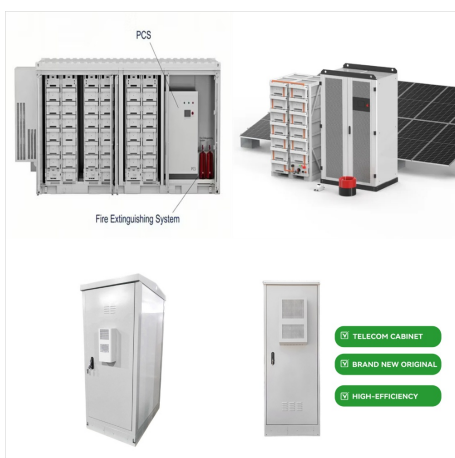
EBR SCHOOL SYSTEM STEAM POWER



The East Baton Rouge Parish School System and all of its entities (including Career and Technical Education Programs) do not discriminate on the basis of age, race, religion, national origin, disability, or gender in its educational programs and activities (including employment and application for employment), and it is prohibited from discriminating on the basis of gender by ???



The East Baton Rouge Parish School System and all of its entities (including Career and Technical Education Programs) do not discriminate on the basis of age, race, religion, national origin, disability, or gender in its educational programs and activities (including employment and application for employment), and it is prohibited from discriminating on the basis of gender by ???

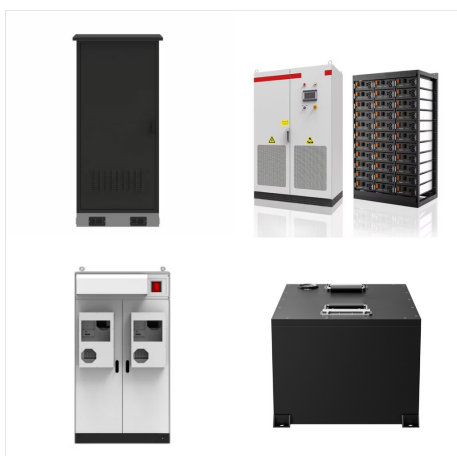


The East Baton Rouge Parish School System and all of its entities (including Career and Technical Education Programs) do not discriminate on the basis of age, race, religion, national origin, disability, or gender in its educational programs and activities (including employment and application for employment), and it is prohibited from

EBR SCHOOL SYSTEM STEAM POWER



The East Baton Rouge Parish School System and all of its entities (including Career and Technical Education Programs) do not discriminate on the basis of age, race, religion, national origin, disability, or gender in its educational programs and activities (including employment and application for employment), and it is prohibited from discriminating on the ???



The East Baton Rouge Parish School System is delighted to announce the highly anticipated Back-to-School Bash 2024. The spectacular event celebrating the commencement of the new academic year will be held from 11 a.m. to 2 p.m. Aug. 3 at the Raising Cane's River Center, 275 S. River Road. The Power Coalition, Louisiana Housing Corporation



The OGE is laser-focused on assisting stakeholders in removing barriers to graduation and post-secondary aspiration actualization. The OGE will work collaboratively across central office teams to ensure all students have a strong start and strong finish in East Baton Rouge Parish School System middle and high school portfolios. Leaders of the

EBR SCHOOL SYSTEM STEAM POWER



The East Baton Rouge Parish School System and all of its entities (including Career and Technical Education Programs) do not discriminate on the basis of age, race, religion, national origin, disability, or gender in its educational programs and activities (including employment and application for employment), and it is prohibited from