

Does Echo Dot have a battery base?

Make your Echo Dot portable with the Mission Battery Base. Design blends elegantly with Echo Dot without compromising audio performance. Accessory specially designed to work with Echo Dot (4th & 5th Gen). Echo Dot sold separately. Enjoy your music away from the power outlet with integrated battery lasting up to 5 hours.

Does the mission battery base work with Amazon Echo Dot?

Make your Echo Dot portable with the Mission Battery Base. The Echo Dot Battery Base is specifically designed to work with Echo Dot (4th & 5th Gen). Enjoy your music away from the power outlet with integrated battery lasting up to 5 hours. Not compatible with other generations of Amazon Echo Dot or the larger Amazon Echo. Echo Dot sold separately.

How do I Charge my Echo Dot?

You're probably familiar with portable battery packs, which allow you to recharge your phone on the go. Since the Echo Dot uses a microUSB port for getting power, you can use any ol' microUSB cable to power it. Then, to run off of battery power, simply plug it into any portable battery pack. The Echo will automatically boot up and be ready for use.

Can you run Amazon Echo dot on battery power?

However, you can run the Echo Dot on battery power and have it last for days--all you need is a USB battery pack. Update: Amazon now offers always-listening on the Amazon Tap, but if you already have an Echo Dot, this is still a worthwhile project! Skip the Amazon Echo: The Amazon Tap Is Cheaper and Better

Does echo 4th Gen work with a battery base?

Make your Echo portable with a Battery Base. Designed to work with Echo (4th Gen). Echo sold separately. Enjoy your music away from the power outlet with integrated battery lasting up to 5 hours. Seamlessly attaches to the base of Echo (4th Gen) without tools. Not compatible with previous generations of Echo (1st Gen, 2nd Gen, or 3rd Gen).

Does Amazon Echo Dot work with 4th & 5th generation?

Compatible with Amazon Echo Dot 4th & 5th generation. Not compatible with other generations of Amazon Echo Dot or the larger Amazon Echo. Included In the Box: Battery base and Quick Start Guide.

"Alexa, turn on the lights." Control the lights with your voice. Amazon Basics - Smart A19 LED Lig...Govee Smart Light Bulbs,WiFi Bluetoo...



It will be sold for \$49.99. Amazon Alexa Echo Dot 3rd Generation can be identified by its rotating volume ring, four buttons, and fabric speaker cover. Colors vary by marketplace. The model number of the device can be found on the bottom of the device.



??? Extended Power Backup: Delivers up to 4 hours of runtime for connected devices, allowing ample time to save work, contact emergency services, or access entertainment. ??? Free Charger for Echo Dot 3rd and 4th Gen: Comes with a complimentary charger specifically designed for Echo Dot 3rd and 4th generation devices. ??? Conveniently charges



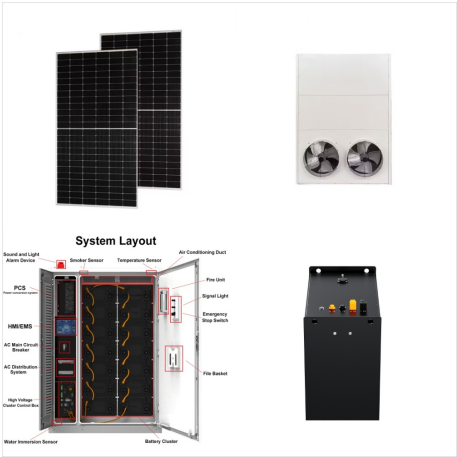
The Echo Dot 3 speaker with its AC power adapter,. This power adapter, including its cable and connector, weighs approximately 4 ounces. Other Echo Dot 3 Posts. Echo Dot 3 Buttons Guide; Factory Reset Directions; Setup Instructions; References. Echo Dot 3 Official Product Page; Where to Buy an Echo Dot 3



Fanxoo ED3 Battery Base for Echo Dot 3rd Gen, Portable Charging Power for Echo Dot 3rd, Alexa Auxiliary Power Accessories (Not Include Echo Dot 3rd) (Black-19W) 4.3 out of 5 stars. 537. Battery Base for Echo Dot 3rd Gen Battery Stand Portable Charger for Dot 3rd and Google Mini 2 Back up Battery 8 Hours Play time, Not Include Speaker (Black



There might also be some concern about high frequency noise from the cable's DC/DC converter getting into the audio circuits of the Echo Dot. The Echo Dot 5th Gen uses about 1.3 watts in standby mode. A 10,000 mAh 5.0 VDC Power Bank has 50 Watt-Hours of power.



The Echo Dot Battery Base is specifically designed to work with Echo Dot (4th & 5th Gen). Enjoy your music away from the power outlet with integrated battery lasting up to 5 hours. Not compatible with other generations of Amazon Echo ???



Pros: Specifically designed for the Echo Dot 3rd generation, it offers a solid battery life of around 10 hours, affordable.; Cons: Limited to Echo Dot 3rd gen, slower charging time.; Why It's a Good Choice: If you own an Echo Dot 3, the Blanou Battery Base is tailor-made for your device. With a respectable battery life and a more budget-friendly price tag, it's a solid choice for making



So, whether you need a portable base for your Echo Dot or a more robust option for your Echo Plus, our reviews and buying guide will help you pick the best Amazon Echo battery base for your needs. Backup power source. Amazon Echo battery bases can be very useful as a backup power source for situations where the power supply is unreliable or



The heavily discounted fourth-generation Echo Dot is a veritable bargain if you're looking for Alexa functionality without draining your wallet. It looks pretty much the same as the newer, more expensive 5th generation Echo Dot, which means there's enough room inside for a 1.6-inch speaker ??? decent enough to meet most people's Spotify



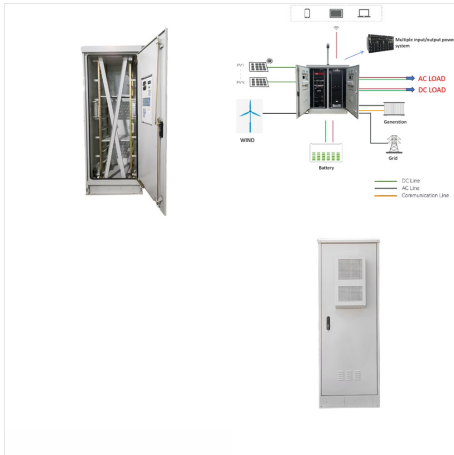
This echo dot 5th generation battery base provides a power station that is compatible with both new Amazon Alexa Echo Dot 5th Generation and Echo Dot 4th Generation. With this integrated echo dot 5 battery base, you can enjoy an improved audio experience, clearer vocals, and vibrant sound from the Alexa dot 5 away from power outlet.



Fanxoo ED3 Battery Base for Echo Dot 3rd Gen, Portable Charging Power for Echo Dot 3rd, Alexa Auxiliary Power Accessories (Not Include Echo Dot 3rd) (Black-19W) 4.3 out of 5 stars. 539. 50+ bought in past month. Battery Base for Echo Dot 3rd Gen Battery Stand Portable Charger for Dot 3rd and Google Mini 2 Back up Battery 8 Hours Play time



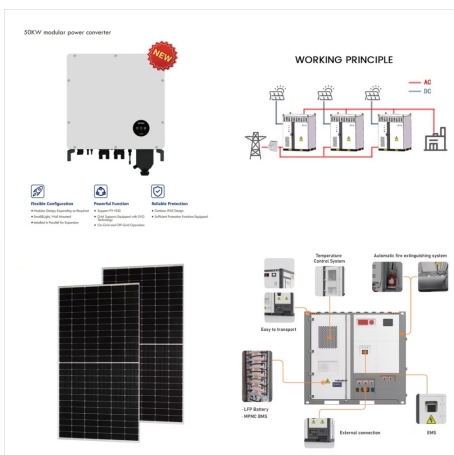
Make your Echo Dot portable with the Mission Battery Base. Design blends in elegantly with Echo Dot without compromising audio performance. Accessory specially designed to work with Echo Dot (5th generation). Echo Dot sold separately. Enjoy your music away from the electrical socket with integrated battery lasting up to 5 hours.



The setup is super simple, just unplug your Amazon Echo Dot power adapter cable from the back of your device, insert the Echo Dot into the battery base, connect the short power cable between the battery and the Echo Dot and plug the power adapter cable to the right side of the battery base. Wait a few hours for the battery to charge, and then



Whether you have a newer model and are looking for top-notch performance, or you own a 3rd gen device and want a reliable, affordable option, these battery bases have you covered. Choose the one that fits your needs, and enjoy the ???



Shop Amazon Echo Dot (5th Gen 2022) - Smart Speaker with Alexa at Target. Choose from Same Day Delivery, Drive Up or Order Pickup. In the box: Echo Dot, 15W power adapter (glacier white), and Quick Start Guide. Dimensions (Overall): 3.53 Inches (H) x 3.93 Inches (W) x 3.94 Inches (D) Weight:.75 Pounds.



So, while your Echo Dot might be fond of its power cord, it's not the only way Alexa can brighten your day. Wireless Alexa Speaker: A Myth or Reality? Wireless freedom for Alexa ??? sounds like a tech utopia. While most Echo devices, including our beloved Echo Dot, are fans of their power cords, the dream of a wireless Alexa isn't just pie



Pros: Specifically designed for the Echo Dot 3rd generation, it offers a solid battery life of around 10 hours, affordable.; Cons: Limited to Echo Dot 3rd gen, slower charging time.; Why It's a Good Choice: If you own an Echo Dot 3, the ???



So if you're planning on using your Echo Dot for an extended period of time without access to power, you might want to consider bringing along a backup battery pack. Does Echo Dot Need to Be Charged? Echo Dot does not need to be charged. It has a built-in battery that lasts for approximately 12 hours. Is There a Rechargeable Alexa Device?



Certified "Made for Amazon" accessory specially designed to work with Echo Dot (4th Gen). Echo Dot sold separately. Enjoy your music away from the power outlet with integrated battery lasting up to 5 hours. Not compatible with previous generations of Echo Dot (1st Gen, 2nd Gen, or 3rd Gen) or Amazon Echo (larger device).



Echo Dot gets stuck mid-reset: Rarely, the reboot sequence may freeze part way through. If your Echo Dot is unresponsive after holding the reset 15+ seconds, simply repeat the full 25 second button press process. This essentially functions as a ???



Amazon : Fanxoo ED3 Battery Base for Echo Dot 3rd Gen, Portable Charging Power for Alexa, Echo Dot 3rd Auxiliary Power Accessories (Not Include Echo Dot 3rd) (White-19W) : Electronics



An Echo Dot Battery Base is a portable power source specifically designed for the Amazon Echo Dot (2nd generation). It allows you to use your Echo Dot without having to plug it into a power outlet, making it convenient ???



The Echo Dot does not have battery backup. It needs a constant power source and must stay plugged in to work. This limitation affects its portability compared Power Banks: Power banks offer another versatile option for powering the Echo Dot. Power banks are external battery packs that can charge devices using USB connections. They come in