

What are the benefits of EPs?

This on-demand type of EPS saves fuel and reduces emissions if the vehicle is equipped with an internal combustion engine (reducing the load on the alternator) and reduces the amount of electrical energy consumed if the vehicle is a hybrid or full electric. There are other EPS advantages that are often overlooked.

Why do electric vehicles use EPS systems?

Quiet Operation: On electric vehicles, where noise levels are often lower than in conventional ICE vehicles, EPS systems run silently, which is noticeable. This makes driving quieter and enjoyable as a result. **Maintenance and Reliability:** EPS systems generally require little maintenance compared to hydraulic power steering systems.

Are EPS systems better than hydraulic systems?

2. Energy Efficiency: HEPS systems, with their use of electric motor assistance alongside hydraulic power, offer improved fuel efficiency compared to traditional hydraulic systems. EPS systems are even more energy efficient as the electric motor only activates when assistance is needed.

Are EPS systems more energy efficient than SBW systems?

EPS systems are even more energy efficient as the electric motor only activates when assistance is needed. SBW systems can also contribute to energy efficiency by reducing weight and allowing for more efficient integration with other vehicle systems. **3.**

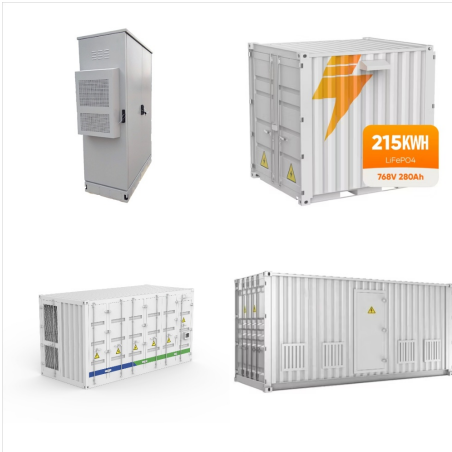
How does an EPS motor work?

Many smaller vehicles may have the EPS motor mounted to the steering column, inside the vehicle, to save space. The EPS control module can detect and compensate for steering pull, steering nibble, road crown or heavy side winds by lessening the effect on the steering wheel, thus reducing driver fatigue.

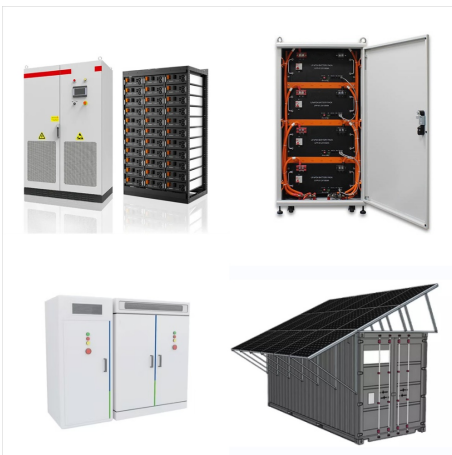
Are EPS systems worth it?

While EPS systems offer numerous benefits, they do have some limitations. One concern is the loss of power steering assistance in case of a system failure or electrical malfunction. When this occurs, manual steering becomes more difficult, particularly at lower speeds.

EFFICIENT POWER SYSTEM EPS FUEL SAVER



Eaton Energy Saver System UPS efficiency 99 percent Three-year energy savings (MWhrs) 145 363 670 1340 1876 Three-year CO₂ Energy Saver System provides power to the critical load and maintains the inverter input. Because the inverter input is always charged (but not running), and the output is always



How they save fuel: Smaller, more efficient engines replace larger ones, using less fuel. What to watch out for: Many suffer from an initial hesitation due to turbo lag, and sometimes expected



With the widespread use of Electric Power Steering (EPS) systems in recent years, the automotive industry has undergone a substantial upheaval. These systems provide better fuel efficiency, improved driving, increased ???

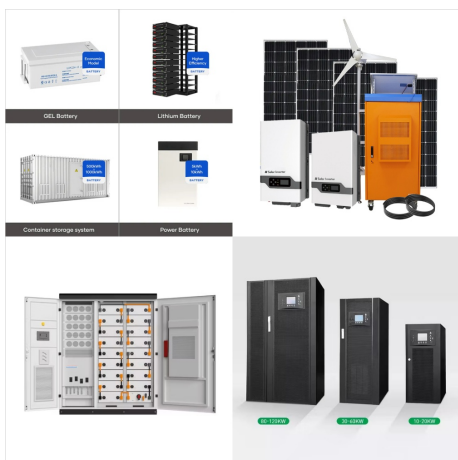
EFFICIENT POWER SYSTEM EPS FUEL SAVER



For maximum power, the legendary available 5.7L HEMI(R) V8 Variable Valve Timing (VVT) engine with Fuel Saver Technology delivers the power of a V8 with the efficiency of a 4-cylinder engine. Fuel Saver Technology detects when full power isn't needed, like when highway cruising, and deactivates four of the eight cylinders to improve efficiency.



How It Works. The Flex-Force is a newly designed intake forced air induction system that uses a unique V-Shaped blade system to accelerate the air flowing into your motor. This provides multiple benefits to your vehicle, the accelerated air creates more air mass flow, cooler air, and the cyclonic V-Shaped blades also mixes the fuel in a uniform and even flow.



EXERGY FUEL SYSTEM SAVER IMPROVED
INLET METERING VALVE (FCA/MPROP)
LML/6.7L POWERSTROKE Cost-Effective
Protection: Affordable option to safeguard
high-pressure components. Enhanced Performance:
Reduces idle surge and pressure fluctuations. Easy
Installation: Takes a skilled tech around 30 minutes
to install. Advanced Filtration: Dual ???

EFFICIENT POWER SYSTEM EPS FUEL SAVER



GM vehicles have used electric power steering (EPS) systems for over a decade now, so odds are good you've already worked on a vehicle using the system. Interestingly, it's not just expensive or luxury models that use EPS. Because the system is such a fuel-saver and also lowers emissions, it's turned up on most of the vehicles on the road.



Hybrid Fuel Saver Controller. Seamlessly integrate solar diesel hybrid system to minimize fuel consumption. minimizing diesel consumption and ensuring efficient power utilization at an export company. Read more. LATAM. C & I. 850 kWp. Solar diesel integration of a mining company in Brazil.



Fits: 2024 Chevy Silverado/GMC Sierra 2500HD/3500HD L5P Duramax *Allow 10-15 business days for processing from the manufacturer* Finally a solution for better filtration on your L5P Duramax fuel system! This system replaces your single L5P fuel / water filter with a direct plug and play style filtration system that tak

EFFICIENT POWER SYSTEM EPS FUEL SAVER



I've been reading about a device called Fuel Save Pro that plugs into my car's OBD II port under the dashboard. It says I can save 15% to 35% on fuel costs by letting this device optimize my car's fuel settings dynamically ???



As of January 2023, a search of Google brought up an ad that read, "Power Saver Pro - Elon Musk Power Saver." The words for the product name were not in the right order, but it still showed the

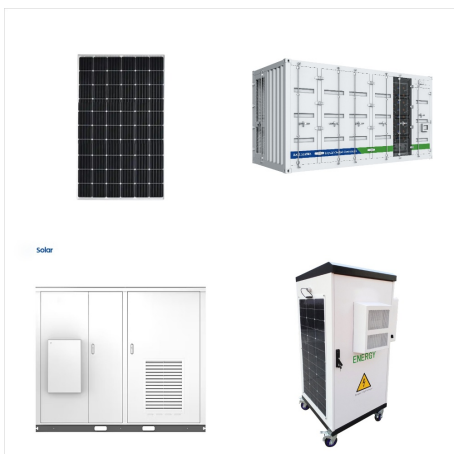


The electric power steering (EPS) system is a modern solution to traditional hydraulic power steering. Instead of using a hydraulic pump and fluid, the EPS system relies on an electric motor to assist with steering. This system offers improved fuel efficiency, a lighter and more compact design, and customizable steering feel based on

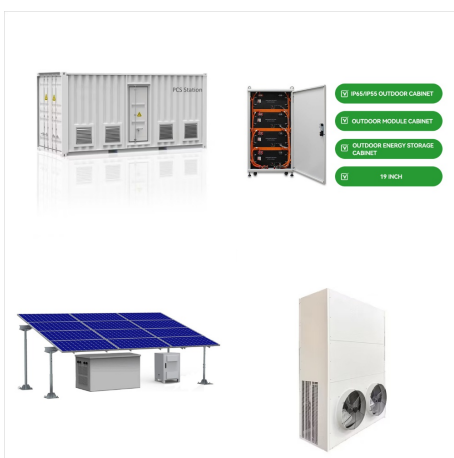
EFFICIENT POWER SYSTEM EPS FUEL SAVER



VOLO ??? FS3 DSF Fuel saver. Cost \$300 includes courier costs to you. VOLO ??? FS3 DSF Fuel saver. For those who want to SAVE 10% to 18% on fuel and feel more horse power! The FS3 is for fuel saving without HHO added. A quick 30 minute install and your good to go for years to come! Your car or truck will save fuel the life of your car!



This paper discusses the design of an Electrical Power System (EPS) for a 1U CubeSat. A low-cost, lightweight, and highly efficient EPS using commercial off-the-shelf (COTS) components is designed. Efficient Electrical Power System Design for CubeSat Shaymaa Abushawish1 Engineering Department College of Engineering & IT(CEIT), University of



This small device tunes your car's electronic system to make it more fuel-efficient and boosts performance. Also, it's a great way to save money on gas and reduce your carbon footprint. What Is Optifuel Fuel Saver Pricing? The price of the Optifuel Fuel Saver varies based on the quantity you buy and the seller. Here are some options

EFFICIENT POWER SYSTEM EPS FUEL SAVER



Another key difference is the power source. Traditional power steering systems rely on the engine's power to operate the hydraulic pump, which can put a strain on the engine and impact fuel efficiency. In contrast, EPS systems draw power from the vehicle's electrical system, reducing the load on the engine and improving fuel economy.

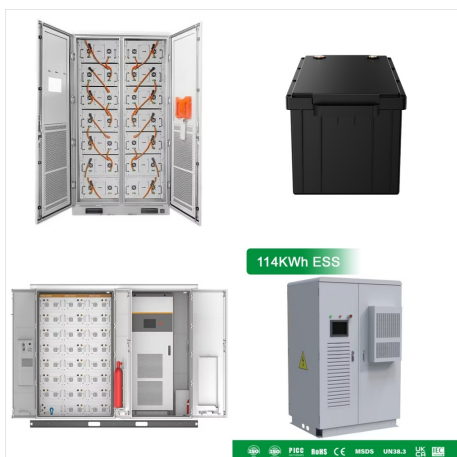


How It Works. The Flex-Force is a newly designed intake forced air induction system that uses a unique V-Shaped blade system to accelerate the air flowing into your motor. This provides multiple benefits to your vehicle, the accelerated air creates more air mass flow, cooler air, and the cyclonic V-Shaped blades also mixes the fuel in a uniform and even flow.

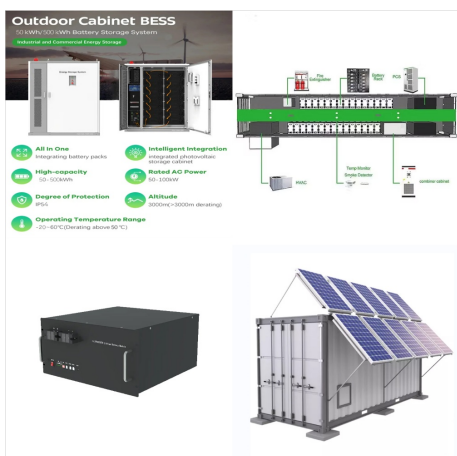


Integrate PV + diesel system seamlessly to minimize fuel consumption through solar and hybrid fuel saver controllers. Regain autonomy on your site with easy setup and operation of your site, ensuring reduced LCOE. minimizing diesel ???

EFFICIENT POWER SYSTEM EPS FUEL SAVER



? Combining a Remap Chip with an gas saver Chip you can help unlock your CFMoto CForce 700 EPS's performance, or fuel efficiency potential. The Doople-X fuel tune helps the ECU deliver the precise amount of fuel your ride needs to perform at ???



Advantages of Automotive Electric Power Steering Energy Efficiency. EPS systems are inherently more energy-efficient than hydraulic alternatives. By eliminating the constant demand for power from the engine, EPS contributes to improved fuel economy, reducing the overall carbon footprint of vehicles. Responsive Driving Dynamics

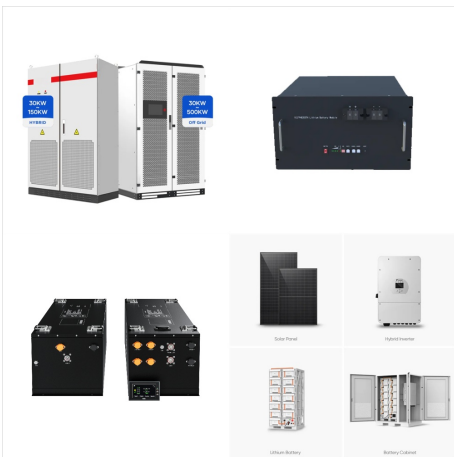


Functional Auto Accessory: Auto Fuel Saver helps to stabilize, increase power, accelerate engine start, increase brake sensitivity, and improve engine efficiency and power performance. Practicality: Fuel consumption is reduced by about 10%. You can experience more horsepower, better acceleration, longer battery life and cleaner emissions

EFFICIENT POWER SYSTEM EPS FUEL SAVER



Fuel efficiency improves with EPS because it uses the car's electrical system, not engine power, reducing fuel use and saving money. Steering with EPS is more precise, making the Elantra easier to control in different driving situations. This increases safety and makes driving more enjoyable. EPS also makes the Elantra quieter since there's no



The electrical power system (EPS) encompasses electrical power generation, storage, and distribution. The EPS is a major, fundamental subsystem, and commonly comprises a large portion of volume and mass in a given spacecraft.



Some will save 0% and some will save 90%. This leads to chaos which leads to stability. Read chaos theory on the internet. I have installed a power saver and I also have solar panels. My power saver is allowing my solar panels to produce electricity at night with solar neutrinos in addition to daylight. Look up neutrino solar panel technology.

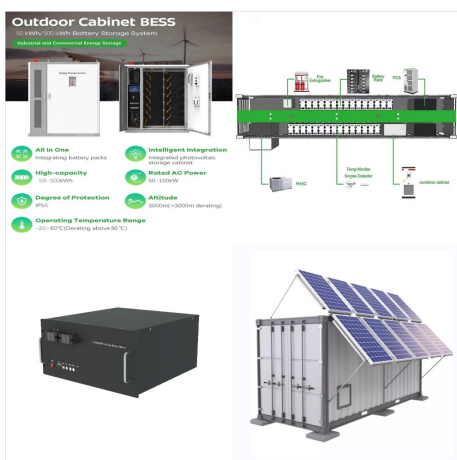
EFFICIENT POWER SYSTEM EPS FUEL SAVER



Your UForce 1000 EPS LX is starving for tremendous horsepower? We sell brilliant CFMoto ATV performance chips. FREE shipping. Magnum brand stands alone when performance is what you are after. Magnum Tuning Performance parts. Find it. Tech Support. Worldwide FREE Shipping FUEL SAVING. HHO INJECTION.



Energy Efficiency: EPS systems are more energy-efficient compared to traditional hydraulic power steering systems because they only consume power when steering assistance is needed. In hybrids and EVs, where energy conservation is crucial for maximizing range and efficiency, EPS contributes to energy savings.



The Exergy Fuel System Saver is a fuel additive that promises to improve fuel efficiency, increase horsepower, and reduce emissions. It is designed to be used in all types of gasoline and diesel engines, including cars, trucks, boats, and even lawnmowers.