



Electrical Power Systems is an engineering design, commissioning, and maintenance testing company for utility, industrial, transit, data centers, and commercial facilities. The company was founded in 1977 and is headquartered in Maryland Heights, Mis



Primary transmission. The electric power at 132 kV is transmitted by 3-phase, 3-wire overhead system to the outskirts of the city. This forms the primary transmission. Secondary transmission. The primary transmission line terminates at the receiving station (RS) which usually lies at the outskirts of the city. At the receiving station, the voltage is reduced to 33kV by step a?]



Dana Billman HR Assistant at Electric Power Systems, Inc. Anchorage, AK. Connect Melanie Coar HR Manager at Electric Power Systems Anchorage, AK. Connect Veronica Bauder, EIT United States. Connect Explore collaborative articles We're a?]



The journal aims at presenting important results of work in this field, whether in the form of applied research, development of new procedures or components, original application of existing knowledge or new design approaches. The scope of Electric Power Systems Research is broad, encompassing all aspects of electric power systems. The following



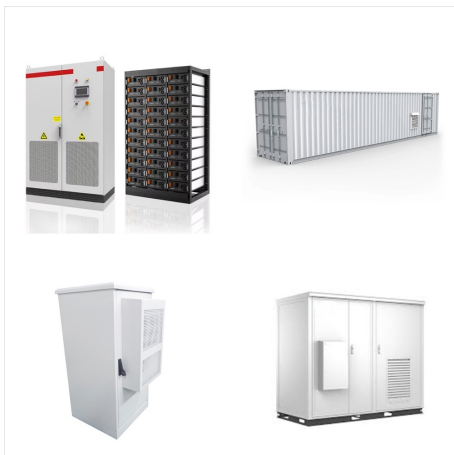
Electric Power Components and Systems publishes original theoretical and applied papers of permanent reference value related to the broad field of electric machines and drives, power electronics converters, electromechanical devices, electrical equipment, renewable and sustainable electric energy applications, and power systems.. Specific topics covered include:



9 records for Dana Billman. Find Dana Billman's phone number, address, and email on Spokeo, the leading online directory for contact information. Company: Electric Power Systems Inc. Demographic Info for Dana Billman Statistics based on US a?|



At Electric Power Systems, we manufacture, repair, and service a wide range of electrical equipment used for applications within equally as many industries. (919) 556-4703 Facebook



Offers up to 430 kW (576.6 hp) of continuous power and 540 kW (724.2 hp) of peak power; Peak torque value of 2,500 Nm (1843.9 ft.-lb.) Up to 30% lighter, and delivers up to 65% more continuous power and up to 45% more peak power compared with other heavy-duty electric powertrains available for the market



Key learnings: Power System Definition: An electric power system is a network designed to efficiently generate, transmit, and distribute electricity to consumers.; Voltage Regulation: Managing voltage levels through transformers is crucial for minimizing energy loss and ensuring safe, efficient power delivery.; Transmission Importance: High voltage a?|

# ELECTRIC POWER SYSTEM INC

## DANA BILLMAN



Electric Power Systems, Inc. | 925 followers on LinkedIn. Incorporated in 1996, Electric Power Systems, Inc. (EPS) is a unique company offering a wide range of system planning, analysis, design, protection, and controls experience in the power and petroleum industries. Project experience in the area of power systems includes substation, generation, distribution, and a?|



Electric Power Systems, Inc. 3305 Arctic Blvd., Suite 201 Anchorage, AK 99503-4575 (907) 522-1953 phone (907) 522-1182 fax eps@epsinc email. Our Company. Electric Power Systems is a member company of Engineered Solutions Group, Inc. The group's member companies include:



Profile. Dana TM4 is a joint venture between Dana Incorporated and Hydro-Quebec. The company designs and manufactures low- and high-voltage electric motors, generators, power electronics, and control systems suitable for the automotive, commercial, off-highway, marine, rail, motorsports, and recreational vehicle markets.





Find out what works well at Electric Power Systems, Inc. from the people who know best. Get the inside scoop on jobs, salaries, top office locations, and CEO insights. Compare pay for popular roles and read about the team's work-life balance. Uncover why Electric Power Systems, Inc. is the best company for you.



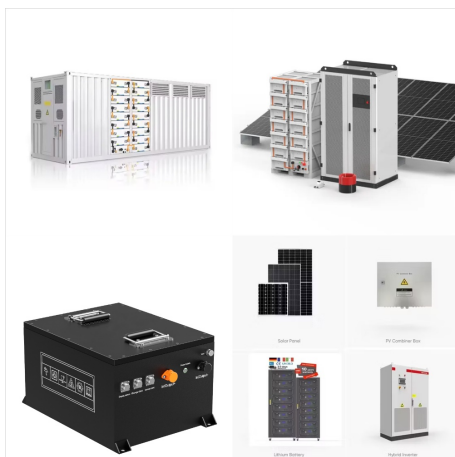
What is an Electric Power System? An electric power system or electric grid is known as a large network of power generating plants which connected to the consumer loads.. As, it is well known that "Energy cannot be created nor be destroyed but can only be converted from one form of energy to another form of energy". Electrical energy is a form of energy where we transfer this a?|



A steam turbine used to provide electric power. An electric power system is a network of electrical components deployed to supply, transfer, and use electric power. An example of a power system is the electrical grid that provides power to homes and industries within an extended area. The electrical grid can be broadly divided into the generators that supply the power, the a?|



5 About Electric Power Systems. 5 Careers. Join our Team and help us Power Upward Mobility! EP Systems is at the forefront of helping revolutionize the aviation industry, and we are searching for exceptional individuals to join us on this pioneering journey. If you possess a remarkable ability to solve complex problems, a desire to drive



Dana has taken a leading position in vehicle electrification. In fact, with in-house gearbox, low- to high-voltage motor, inverter, controls, and thermal and battery management expertise, we are the only supplier capable of delivering all elements of a complete, fully integrated electrified system across all mobility markets.



Electric Power Systems" generation project experience includes: Fort Raymond Power Plant  
The Fort Raymond Power Plant project consisted the design, construction project management and commissioning of two 2.5 MW EMD diesel engines in a new power house building in Seward, Alaska. EPS provided the electrical and mechanical designs and