

Who is electric power systems?

Electric Power Systems, Inc. | 13,342 followers on LinkedIn. Power Upward Mobility | Electric Power Systems (EPS) is the emerging leader of high-power scalable powertrains that are certifiable for electrified aviation.

Where is electric power system located?

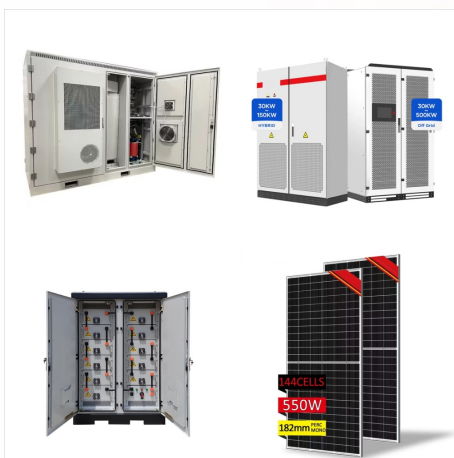
Electric Power System's service area extends throughout the United States and Canada, with 30 offices strategically located around North America. Additionally, EPS has completed projects throughout the world including the Middle East, South America, China and Malaysia. Utilities 501-1,000 employees Maryland Heights, MO Privately Held

Why should you choose electric power systems?

Every day, We Empower Possible, by helping customers enhance the safety, reliability, cost-effectiveness, and environmental sustainability they rely upon to meet their changing energy needs. Electric Power Systems is a NETA Accredited, Independent Electrical Testing & Engineering Organization.

What makes EPs a reliable electrical service provider?

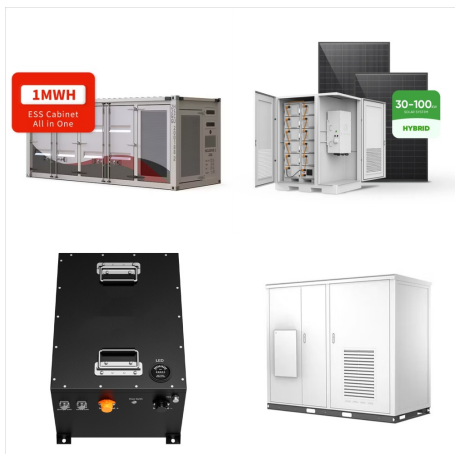
EPS is committed to quality and reliable service. As accredited NETA members, our technicians undergo required testing to demonstrate their knowledge in several categories, including safety and independent electrical testing methods.



Exciting milestone achieved as the all-electric eDA40 completes its successful maiden flight at Diamond Aircraft's HQ in Austria. A significant step towards certification for this exceptional electric circuit trainer. (No Emissions), designed for 200-kilometer air journeys. Electric Power Systems (EPS), a leading battery provider of



Electric Power Systems (EPS) is a leading provider of high power scalable powertrains that are certifiable for electrified aviation. It develops energy storage systems, DC fast-charging stations, and electric propulsion products for Aerospace, Defense, Automotive, Marine, and Industrial Traction industries.



Find company research, competitor information, contact details & financial data for Electric Power Systems International, Inc. of Maryland Heights, MO. Get the latest business insights from Dun & Bradstreet.



Electric Power Systems has 5 employees across 32 locations. See insights on Electric Power Systems including office locations, competitors, revenue, financials, executives, subsidiaries and more at Craft. MO HQ. United States. 15 Millpark Ct. Albuquerque, NM. United States. 4416 Anaheim Ave NE. Ashland, VA. United States. 306 Ashcake Rd



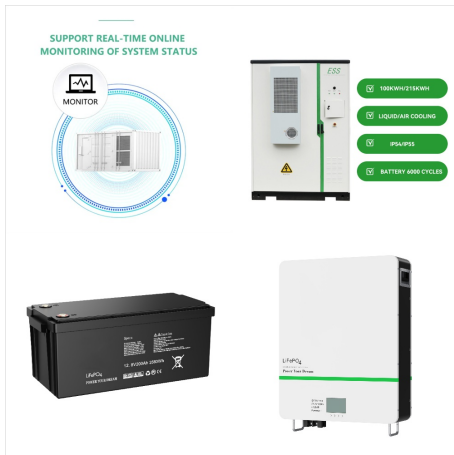
Reliable Power Systems is a family-owned electrical company offering customer-centric electric and generator installation services throughout Palm Beach, Sarasota County, Broward, and Martin counties. Headquarters. 3400 SW 10th St. Deerfield Beach, FL 33442 Phone: (561) 757-4404 Hours: Open 24 Hours . 2974 Cargo St., Fort Myers FL 33916



A world-class portfolio of gas power systems and services utilizes a century-long expertise and has expanded across the entire plant. GE Steam Power offers a broad portfolio of technologies and services predominantly for nuclear and coal power plants helping customers deliver reliable power as they transition to a lower carbon future.



Electric Power Systems (EPS) is a leading provider and emerging leader of high-power scalable powertrains that are certifiable for electrified aviation. It develops energy storage systems, DC fast-charging stations, and electric propulsion products for Aerospace, Defense, Automotive, Marine, and Industrial Traction industries.



Electric Power Systems has 5 employees at their 1 location and \$15 m in total funding,. See insights on Electric Power Systems including office locations, competitors, revenue, financials, executives, subsidiaries and more at Craft. North Logan, UT HQ. United States. 520 W. 2850 N. Report incorrect company information. Competitors and



Service and advancing clean energy are at the core of the new headquarters design. Richardson, TX ??? June 29, 2022 ??? CPS America is thrilled to announce the opening of their new US headquarters and innovation center near Dallas, Texas. and energy storage solutions designed for seamless integration with CPS America systems. CPS America



Mitsubishi Electric Power Products Inc. (MEPPI) is the U.S. subsidiary of Mitsubishi Electric Corporation responsible for serving the North American power systems, rail transportation, and entertainment industries with electrical and electronic products, systems and services. The CPS Division is one of ten divisions under the MEPPI umbrella and is comprised of an experienced ???



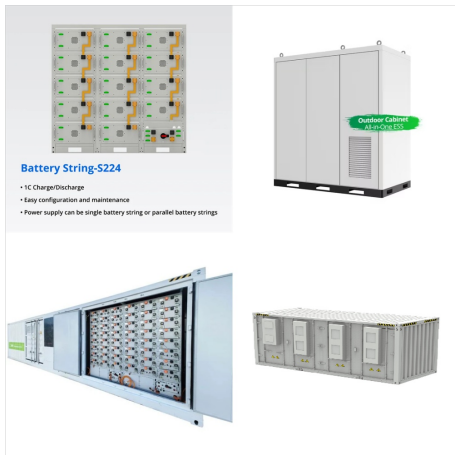
A North American leader in the design and manufacturing of electric and electronic products, systems and services. Headquartered in Warrendale, Pennsylvania, Mitsubishi Electric Power Products, Inc. is a U.S. affiliate of Mitsubishi Electric Corporation of Japan and serves the North American power systems, rail transportation, and large visual display markets with electrical ???



Headquarters: Foster City, California, United States of America. The all-electric Mobile Lung Unit (eMLU) was built on a Ford F-53 based EPI6 all-electric chassis from Motiv Power Systems, with Samsung's NeuroLogica BodyTom Elite a portable, full-body, 32-slice CT scanner. These specialty vehicles were preceded by the announcement of an all



RESA Power is the premier national provider of mission-critical solutions for electrical power systems to address system safety, reliability, operability, and efficiency. Refine 800.576.RESA 800.576.RESA; GET A QUOTE GET A QUOTE; Services. Safe and Reliable Power Services; Power Service Map



Hubbell Power Systems, Inc. is headquartered in Columbia, South Carolina. This location houses the company's executive staff, human resources, finance, legal, logistics and marketing departments.



The UK supply chain delivers electrical power system products for most current aircraft platforms. To maintain competitiveness, continued technology advances are required in the electrical power system components to improve size, weight, power and cost. The trend to higher power can be seen below (timing subject to viability): ELECTRICAL POWER



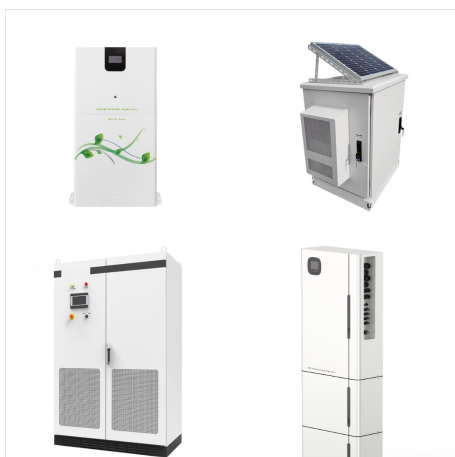
These all-electric powertrain components are used in electric vehicles by partners including Morgan Olson, California Truck and Equipment Company, Creative Bus Sales, Rockport, Trans Tech Bus, and Cumberland Servicer. "We are thrilled to open our new headquarters and support new local green jobs," said Jim Castelaz, CEO of Motiv Power ???



Electric Power Systems (EPS) is proud to help usher in the next stage of electric aviation. We are a leading provider of certifiable electric power systems for high-reliability applications. Our mission: deliver smarter, lighter, and more efficient batteries???



Electric Power Engineers, LLC (EPE) partners with power and energy clients across the globe to address complex engineering and grid modeling challenges, bridge gaps, and design and develop the grid of the future. Leading global power system engineering & consulting firm. Headquarters. 5301 Southwest Parkway Uplands I, Ste. 150 Austin



Who we are and what we do. We manage and monitor the electric generation and transmission for 38 of Georgia's electric membership corporations, which light up half the households in Georgia and cover two-thirds of the state. Our mission is to provide safe, reliable, independent electric system operations, delivering affordable power for more than 4???



Electrical substation, industrial power system,
Electrical services for the battery storage, solar and
windfarm industries [Learn More](#).

Technology/Commercial. Houston Headquarters:
9841 Saber Power Lane, Rosharon Texas 77583.
Call or fax us today: Phone : 713-222-9102



GE Power Systems was a division of General
Electric operating as supplier of power generation
technology, energy services and energy
management and also included oil and gas,
distributed power and energy rental related
solutions. [2] The unit was based originally in
Schenectady, NY and relocated to Atlanta, GA in
2000. [3]It acquired Enter Software in 2001.



MacLean Power System's conductor products are
available for use on a range of materials, including
Aluminum, Copper, Steel and more. Whether you
need a product for splicing, dead-ending, or tapping,
Maclean Power Systems offers the solutions to fit
your need.