

Do storage units have electricity?

Traditional storage units are designed to provide a secure and climate-controlled environment for your belongings. However, when it comes to electricity, most facilities fall short. The standard storage unit doesn't come with an electrical outlet. So, the big question is, do storage units with electricity exist?

Should storage facilities offer electricity?

Insurance premiums for storage facilities offering electricity would naturally be higher due to the increased risks. Storage businesses can maintain lower insurance costs and reduce potential legal liabilities by forgoing the electricity option. Electricity within storage units adds an operational layer of complexity.

Do storage units have electrical outlets?

Electricity in your storage unit means you can power up your tools, amps, and lighting, making your storage unit versatile. Remember that not all storage units have individual power outlets, but some facilities provide shared access to electrical outlets in common areas.

Why do storage units not have electricity?

Simply put, storage units are not designed to be lived in and not having electricity in units is one deterrent facilities use to discourage that use. Another common reason why storage facilities don't offer in-unit electricity, or even access to electricity, is cost. Electricity isn't free. You know that and I know that.

Do storage tenants need electricity?

For the small number of facilities that do allow storage tenants access to electricity, the cost must be accounted for. Typically this means either higher rates or an additional monthly fee. Of course, there are other legitimate reasons for storage, and ones that would require the use of electricity in a unit.

How do you electrify a storage unit?

Electrifying storage units is not as simple as installing a few outlets. It involves significant investment in electrical infrastructure, including wiring each unit, installing outlets, putting meters in place to monitor usage, and implementing safety measures like circuit breakers.



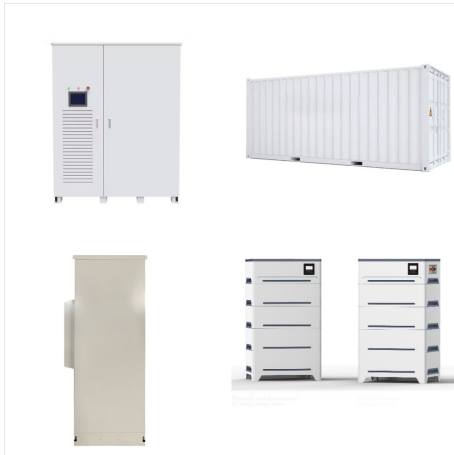
Storage is a browse-and-compare website for renting and reserving self-storage units. With thousands of local storage facilities across the U.S. listed on our site, we make it easy to find the storage unit that best fits your storage needs. Whether you're looking for a storage unit with climate control or electricity, or storage for your



Only members who have installed electric storage heating equipment (ETS units), licensed electric vehicle(s), or battery storage unit(s) approved by San Isabel Electric are eligible for the time of day rate. How it works. The time-of-day rate, also known as time-of-use or TOU, is a relatively simple concept. Rates are lower during hours when



Series room units are ideal for retrofitting electric baseboard-heated rooms, supplementing an existing heating system or heating a new addition to your home or business. Unlike traditional electric heaters, Steffes ETS room heating units convert electricity to heat during off-peak hours, when the demand and price of electricity is lower.



Electric Thermal Storage is a system that stores electric heat during the night when rates are lower, and releases the heat throughout the day. Using electric thermal storage units was first encouraged by the UK Electricity Boards in the 1960s, to find a way to use more electricity at night, when demand typically dropped and power plants



Energy storage systems for electricity generation operating in the United States Pumped-storage hydroelectric systems. Pumped-storage hydroelectric (PSH) systems are the oldest and some of the largest (in power and energy capacity) utility-scale ESSs in the United States and most were built in the 1970's. PSH systems in the United States use electricity from electric power grids to ???



It consists of three base Encharge 3T storage units, which use Lithium Ferrous Phosphate (LFP) batteries with a power rating of 3.84KW. This battery storage system cools passively, with no moving



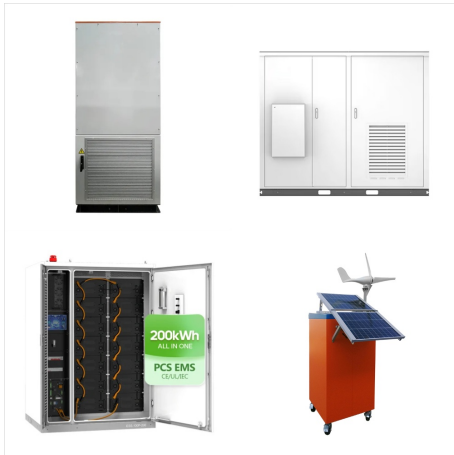
Public Storage is the leading provider of storage units for your personal, business and vehicle needs with thousands of locations nationwide. We offer a wide variety of units and sizes available with no obligation and no long-term commitment. ???



Look up storage units in the area near you for the best pricing and space options. Comparison and Conclusion: Storage for Electric Bikes vs. Standard Bikes. Keep in mind that e-bikes are much heavier, bulkier, and have more parts than traditional bicycles. They will require more caution when mounting on racks and lifting.



Electric Thermal Storage is a system that stores electric heat during the night when rates are lower, and releases the heat throughout the day. Using electric thermal storage units was first encouraged by the UK Electricity Boards in the ???



First, check you are connected to your home WiFi when standing next to your Smart Electric unit. Once connected, turn your hot water unit off and then on again to restart the pairing mode which will remain active for 5 minutes. Control App upon install, your unit will still run just like a standard electric storage unit and you can set up



Storage facilities provide various storage unit sizes, from small 5x5 to large 10x30. They also offer features like climate control, drive-up access, and some have 24-hour access for convenience. What they usually do not offer is access to electricity. However, some facilities do offer this rare and elusive amenity.



Use greener electricity and be part of the solution to climate change. Grid independence. Installing battery storage is now VAT FREE in the UK ??? there's never been a better time to transform your energy use. Unit 9, Garrick Industrial Estate, Irving Way, London NW9 6AQ. Tel: +44 (0)203 653 1111



For more details, review our privacy policy. Pumped hydro, batteries, thermal, and mechanical energy storage store solar, wind, hydro and other renewable energy to supply peaks in demand for power.



Bike storage ideas; Car bike racks; All Fitness. Health. This unit offers lots of power in a portable, durable, easy-to-use package. which produces electrical waveforms as clear and smooth



Electric Storage 2; Under Sink Water Heater 2; Instantaneous Electric 1; Under bench mains pressure water heater 1; Show more We stock a range of heavy-duty commercial units with reliable heating elements designed to withstand the rigours of commercial use. If you're not sure what type of electric hot water system will best serve your



Amazon : portable power storage systems.
Electricity Generator Engine Type 4 Stroke Clear all
Power Generator Type Inverter Portable Clear all
Generator Wattage 999 Watts & Under 2,000 to 3,999 Watts 6,000 to 7,999 Watts Clear all
Recommended Uses



Simplified electrical grid with energy storage
Simplified grid energy flow with and without idealized energy storage for the course of one day.
Grid energy storage (also called large-scale energy storage) is a collection of methods used for energy storage on a large scale within an electrical power grid. Electrical energy is stored during times when electricity is plentiful and inexpensive



It consists of three base Encharge 3T storage units, which use Lithium Ferrous Phosphate (LFP) batteries with a power rating of 3.84KW. This battery storage system cools passively, with no moving



Economical energy storage would have a major impact on the cost of electric vehicles, residential storage units like the Tesla Powerwall, and utility-scale battery storage applications. Emerging energy storage technologies. Energy storage technologies are the key to modernizing the electricity system. Scientists and engineers are creating new



Portabull Cold Storage leases walk-in electric cold storage containers that outperform diesel reefer trailers. Storage Unit Rentals. Electric Reefer Unit Rentals. 10??? Container for Rent; Built with state-of-the-art Carrier(R) compressor technology, our electric reefer units feature non-ozone-depleting refrigerants, improved airflow



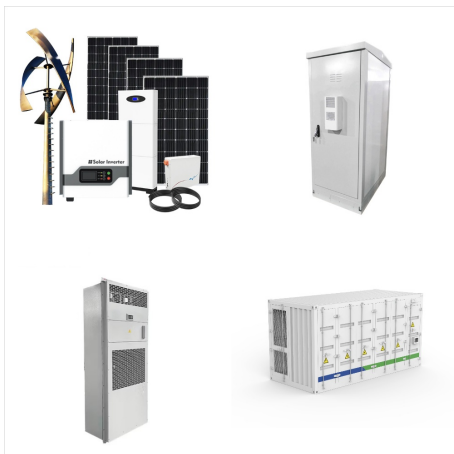
Each storage facility is unique to its market, offering a wide variety of storage spaces and types. Features such as climate controlled storage, heated storage and 24-hour access vary by facility, but all storage location are backed by ???



If you have no home, sleeping in a 10x10 storage unit with a good roof, insulation, lighting and a clean bathroom sounds much better than living on the street. Having electricity in the unit also ???



Discover the ideal storage solutions for your electric scooter, including indoor and outdoor options, wall mounts, and rental storage units. and rental storage units. Find out how to properly store your scooter to maintain its longevity. top of page. PRODUCTS . SUPPORT. COMMUNITY. Rent. Shop. Store Locator. Use code SCNEWCUST15 for 15% off



Outside of keeping the exterior of the unit clean and dust, dirt or pet hair away from the bottom of the system these units should operate for a very long time. To learn more about Dimplex electric thermal storage units or to determine the proper sizing for your home contact us to arrange an in-home assessment with one of our Home Energy



Our Electric Thermal Storage (ETS) technology allows the Comfort Plus Forced Air Furnace to convert electricity to heat during off-peak hours, when the demand for and price of electricity is low. Adhere to all national and local electrical and building code placement requirements for electric heating appliances. Unit Dimensions ??? (W x D x



An electric thermal storage heater is a stand-alone, off-peak heating system that eliminates the need for a backup fossil fuel heating system. Supporting Upstate New York, NY Metro, Long Island, New Jersey, and New England providing heat 24 hours but using energy at low-rate prices. However, these units can also be installed in conjunction



Electric Thermal Storage (ETS) stores heat generated by electricity during off peak hours and allows you to use it when you need it at a lower cost. Facebook; NB: 506-317-1650 | NS: 902-450-5304 Room Units. Non-ducted heaters are designed to heat the room or area into which they are placed. Room Units are ideal for new construction



Electric thermal storage, or ETS, is an electric home heating device containing ceramic bricks that can help lower your heating costs by storing heat when electricity costs less and then releasing the heat throughout the day. Our time-of-day (TOD) rates are what makes an ETS cost-efficient. TOD rates change depending on the overall power demand.



Powerwall can power your entire home with one unit, making whole-home backup protection more affordable. Each unit is self-contained with an integrated solar inverter for added efficiency, resulting in fewer parts and faster installation. ???



As the need for accessible and multifunctional storage solutions grows, storage units with electricity are becoming increasingly sought after. Suitable for business and personal use alike, these storage units with electricity offer numerous benefits ??? ranging from the safekeeping of items requiring temperature control to doubling as a practical workspace.