



The Smartpack controller is a monitoring and control unit used as the vital nerve center of the DC power plant. You operate the range of Eltek Valere's DC power supply systems, such as Powerpack, Flatpack2 and Minipack DC power systems.

- o Real Time Clock with Battery Backup
- o Site Text/ID
- o Test of Relay Outputs
- o Voltage Level setup



The scalable Rectiverter indoor system provides AC backup power for 400 VAC 3-phase or 230 VAC 1-phase loads, and 220 VDC power for battery charging and optional DC loads. The Rectiverter building block combines both AC and DC feed into one common unit, simultaneously providing AC backup power for 230/115 Vac loads, 220 Vdc power for DC loads.



Eltek ??? Gr?terudveien 8, PB 2340 Str?ms?, 3003 Drammen, BATTERY ??? Total battery current, temperature and battery fuse monitoring

INPUTS/OUTPUTS - OUTDOOR* - REQUIRE O/I UNIT OUTDOOR ??? ? Factory configurable fan speed regulation ??? ? Fan speed deviation alarming



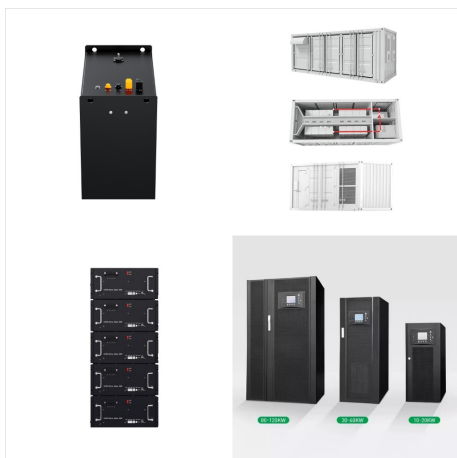
An alarm will sound once a minute to alert you if the 12 volt battery in the battery backup unit (BBU) is not fully charged or has been drained completely. Your battery unit may look different from the one in the illustration below. The steps to mute battery beeping are the same for all battery backup units.



The combination of Flatpack S HE rectifier and Smartpack S controller ensures safe, reliable and environmental friendly operation. The shallow depth makes it suitable for most cabinets and excellent as a replacement unit. And as it is all based on the well proven Eltek technology, the Flatpack S family is the key for future needs



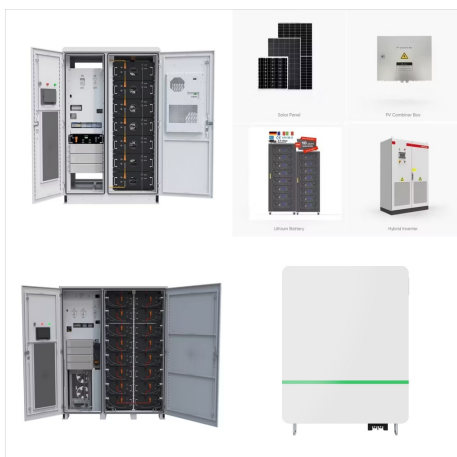
Eltek's 380 Vdc systems provide operators with the ability to solve the combined challenges of ever greater power density, varying load types, and increased site flexibility without compromising on performance, cost, or serviceability. Distribute pure battery backup DC voltage with a minimum of loss. Using the Flatpack2 DC/DC 380V/48V



Our battery charging systems are ideal for backup and emergency power in electric utilities, telecommunications, data centers, military and industrial applications, or in any other type of stationary battery system. Replacing a failed unit is no longer a fire drill; MSR Series. Features. Eltek Rectifier Components are UL approved and CE



The unit is equipped with control outputs for LVD and PLD relays. The control of the rectifier mod-DC power supply systems with battery backup in all areas of industry, telecommunication, power generation Subject to change without notice - Eltek Valere Deutschland GmbH Type UPC3-24S
UPC3-48/60S UPC3-110S UPC3-220S



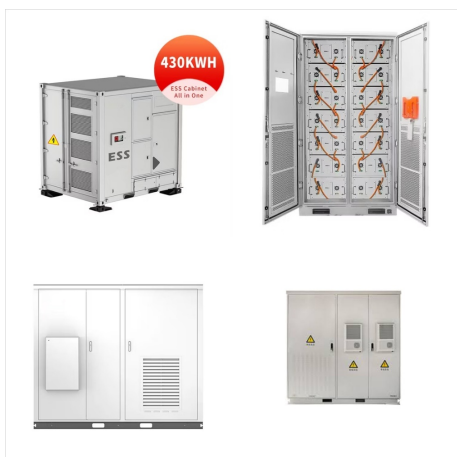
Eltek Central Power System /CPS/ CPS is a high-end solution for ships and oil installations. In most cases, central power systems replace the AC-UPS and provide a closed and high-voltage DC bus that can convert to various voltages with a central battery back-up. ??? Modular/scalable ??? Fewer and global spares ??? One management system



In conclusion, the Eltek Rectifier is a simple yet effective solution to the many challenges faced in modern telecom and datacenter powering environments. It combines AC and DC backup systems in one unit and battery backup, simplifying the power system architecture while improving its reliability and efficiency.



Page 1 User's Guide Monitoring and Control Unit Flatpack2 DC Power Supply Systems; Page 2 Certificate no: 900005E Safety Precautions The equipment described in this manual must only be operated by Eltek Energy personnel or by persons who have attended a suitable Eltek Energy training course The equipment represents an energy hazard and failure to observe this could ???



Replacing a failed unit is no longer a fire drill. Spare modules are practical to stock, hot plug-in design allows MTTR <5 minutes and no disruption to a working system. Battery eliminator feature. Eltek IBB-250WM Technical Data: Input: Voltage AC (operating range): 100 - 250 VAC.



If monitoring and battery backup is needed, Chameleon 48V system is the perfect choice. This is a complete small cell power system consisting of a power core unit with two rectifiers, easy accessible battery and load distributions, advanced control and monitoring, and a battery unit ??? all contained in a small compartment.



The unit is equipped with control outputs for LVD and PLD relays. The control of the rectifier mod-DC power supply systems with battery backup in all areas of industry, telecommunication, power generation Subject to change without notice - Eltek Valere Deutschland GmbH Article code Designation 302-003-RDD.00 Remote display for door



Low voltage disconnect options None or battery (LVBD) Breaker sizes Single pole, 0 ??? 100A Double pole, 125 ???200A Triple pole, 250A CONTROLLER Monitoring Unit Smartpack S Inputs/Outputs 6 configurable inputs* : temperature (battery or ambient), voltage, normally open, normally closed 6 outputs: dry contact (Normally Open/Normally Closed)



The Rectifier building block combines both AC and DC feed into one common unit, simultaneously providing AC backup power for 230/115 Vac loads, 110 Vdc power for DC loads and battery charging. Rectifier Power Core Flexible AC input 6kVA AC + 16-24kW DC



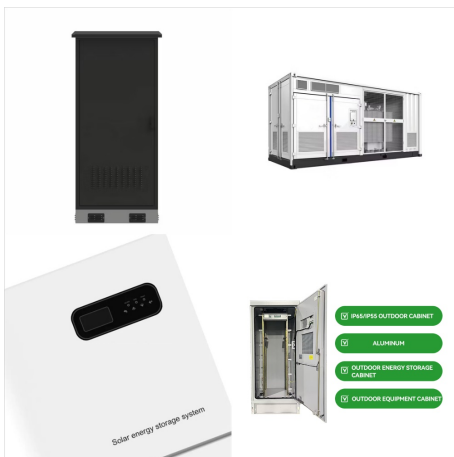
With hardened outdoor enclosures, wide operating temperature ranges and temperature compensated battery charging that protects batteries from over charging at extreme temperatures, Alpha UPS systems and Alpha Outdoor UPS Batteries provide clean ???



kW Lithium-ion Battery Backup Unit is both a battery pack and a power module that includes 1.75kW discharge capacity and a constant-current charger for its batteries. The BBU can supply 12V full-power backup for over 3 minutes during an AC power loss or power fault condition.



Battery temperature is measured by the embedded temperature probe ??? no external sensor and wiring required. The unit has 4 voltage measurement inputs used for battery symmetry monitoring based on midpoint or block measurements. Furthermore the battery monitor has inputs for monitoring one battery shunt and battery breaker. BATTERY MONITOR



View and Download Eltek Smartpack S user manual online. Flatpack S DC Power Supply Systems. Battery Test Log The Battery Test Log is displayed in a results table; each row of data represents a battery test. Also, you can upload a similar, specific System Configuration file <UNIT_nn.HEX> to the controller or to any connected CAN unit, e



o Real Time Clock with Battery Backup o Stored Site Text/ID and Messages Position (longitude/latitude) for auto (interface unit) Smartpack2 Basic Industrial (data aggregation unit) I/O Monitor2 The Scalable system is powered by Eltek's Powerpack rectifiers. They operate on three-phase AC input. Each rectifier outputs up to 11kW of DC



Services that make a difference. We are committed to meeting all your service needs with our team of highly trained professionals. Our wide range of services includes site surveys, project management, installation and commissioning, preventive maintenance, battery maintenance, 24/7 emergency services, product repair and training.



??? BACKUP OF CRITICAL CONTROL FEATURES IN BASIC UNIT. ??? AUTOMATIC BATTERY MONITORING AND TEST ??? BATTERY LIFETIME INDICATION ??? BATTERY USED AND REMAINING CAPACITY (AH OR %) ??? Eltek Generic Battery communication protocol ??? LVBD (voltage, temperature, mains controllable)



ELTEK POWER SYSTEMS ARE BASED ON HIGH EFFICIENCY MODULES AND ADVANCED CONTROLLERS. Eltek expertise lies in power conversion. the Flatpack S is easy to integrate in most cabinets and is a perfect replacement unit. Available voltages ??? 24, 36, 48 VDC The Rectifier is a 3-port device capable of charging the 48V battery and