



The power system provides ultimate power density of 15kW within 1U 19" power shelf. The combination with 3U distribution design, power density and reliability makes the Flatpack D a product family that stands out and provides unparalleled network availability and power output.



Eltek's Trilogy DC power system, powered by the Flatpack2 line of power modules, brings 150A-600A to applications where space is limited. Use of the highly-efficient and reliable Flatpack2 rectifier, remarkably flexible distribution, and the advanced Smartpack S controller make for optimal system design and cost-effective deployment.



The Flatpack S 3U 3x2kW rack has 3 separate DC systems consisting of 2 redundant rectifiers and 1 controller. For flexibility two of these systems can be paralleled to create a system with 4 rectifiers for greater out power or ???

ELTEK FLATPACK POWER SYSTEM 2029299 REV 1



Compact HE 2U power system The Flatpack S 2U system is designed with customer flexibility in mind. This small power dense system is purely based on pluggable breakers and rectifiers and can easily be configured to fit your required application, even ???



Flatpack2 Power Systems Headquarters: Eltek Valere 1303 E. Arapaho Rd. Richardson, TX. 75081, USA Phone: +1 (469) 330-9100 Fax: +1 (469) 330-2955 Flatpack2 Systems Standard Systems* -48V/150A -48V/300A -48V/600A +24V/600A +24V/1200A Image Output Power 8kW 14kW 32kW 16kW 32kW Maximum Output Current (DC)

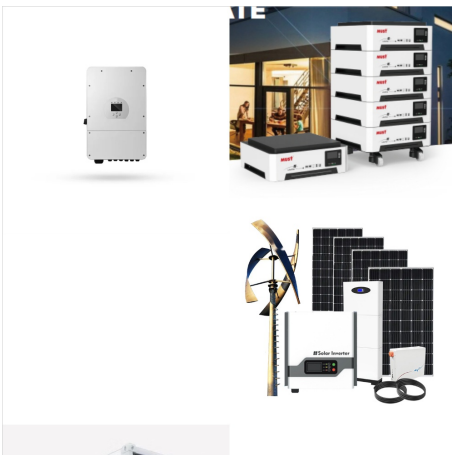


Flatpack D Small power system. The power system provides ultimate power density of 12kW with control unit within 1U 19" power shelf. The combination with 1U distribution design, power density and reliability makes the Flatpack D a ???

ELTEK FLATPACK POWER SYSTEM 2029299 REV 1



A true plug-and-play system, the Unity power system reduces both time-to-install and overall costs. Unity DC Power System with V-HE Versatile and powerful solution for any application. The combination of high efficiency, power density and reliability makes the Unity Power System a product family that truly



distribution make for optimal system design and cost-effective deployment. FLATPACK S 2U HIGH-EFFICIENCY DC POWER SYSTEM Doc 370039.DS3 Issue 2.1 APPLICATIONS The Eltek Flatpack S 2U system is a high-efficiency power solution with an optimal footprint for up to 200A applications where space is limited ??? both in racks and various

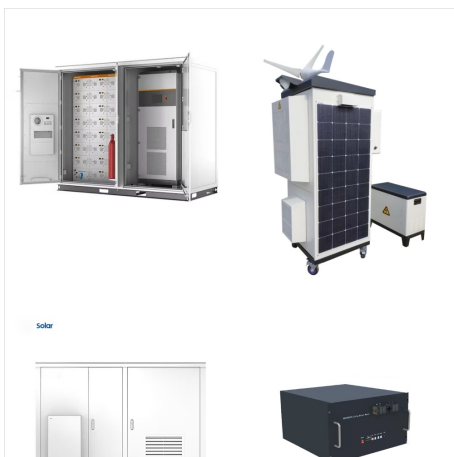


HIGH-EFFICIENCY DC POWER SYSTEM Doc 370012.DS3 Issue 2.1 APPLICATIONS The Eltek Flatpack S 1U system is a high-efficiency power solution with an optimal footprint for applications where space is limited ??? both in racks and various cabinet installations. accessible. The AC connections and The Flatpack S 1U is a one rack-unit high system that

ELTEK FLATPACK POWER SYSTEM 2029299 REV 1



Increasing network speed demands flexible and expandable DC power solutions. Due to its small size, high efficiency, reliability and wide range of communication, the Flatpack S System is the key for future needs. The shallow depth makes the system suitable for most cabinets and thereby excellent as a replacement unit.



??? Flatpack S 48/1800 HE 241122.125 Rev 1.7 (Matija, S53MM) Eltek Flatpack2 Monitor User Guide Page 2 Will it work with other FLATPACK2 rectifier variants not listed above? Connections to your own Eltek FP2 Breakout Board: Power: Use supplied 2-way 0.1" polarised connector. Connect to FP2 DC output + > +ve - > -ve



The Flatpack2 DC/DC Converter System is a High Efficiency power solution with an optimal footprint where space is limited ??? both in typical racks and some cabinet installations. The Flatpack2 DC/DC system delivers DC power solutions to telecommunications infrastructures where dual voltage 24/48V or 48/24V are required to power new and legacy

ELTEK FLATPACK POWER SYSTEM 2029299 REV 1



Power your network efficiently with the Eltek Valere FPSS0301.00001 Flatpack S Power System from Telexpress Live Store. Featuring 48V output polarity, dual rectifiers, and smart controller. Toggle menu. ELTEK FLATPACK POWER SYSTEM. Posted by Unknown on 14th Apr 2020 PLEASED WITH HELP RECEIVED ON PURCHASING THIS ITEM. 5 POWER SYSTEM



Compact HE 1U power system The Flatpack S 1U Bulk Feed system is designed for external distributions, and due to its many output options it meets the market demand for flexible and expandable DC power solutions. With its small size, high efficiency, reliability and wide range of communication, the Flatpack S System is the key for future needs.



The system features Eltek's High Efficiency technology that makes it ideal for supporting sites with dual voltage requirements, such as +24V legacy and newer microwave or LTE -48V telecom equipment. FLATPACK2 DC-DC CONVERTER SYSTEMS Doc 370025.DS3 Issue 1.2 APPLICATIONS The Eltek Flatpack2 DC-DC Converter System is a high-efficiency power

ELTEK FLATPACK POWER SYSTEM 2029299 REV 1



This small power dense system is purely based on pluggable breakers and rectifiers and can easily be configured to fit your required application, even in field. And as it is all based on the well proven Eltek technology, the Flatpack S family is the key for future needs.
 Flatpack S 48V 1U. Compact HE 1U power systems.



The Flatpack S 24V/1000W SIL3 OVP is targeted Safety and Automation Systems (SAS) in offshore and process industry requiring SIL rated overvoltage protection on DC output. Flatpack S 36V/1000W HE UI Applications in these markets demand state of the art, reliable and safe DC power systems.



Page 1 Operation Guide Flatpack Power Tower 351401.013 Issue 2 July 2003; Page 2 Information in this document is subject to change without notice and does not represent a commitment on the part of ELTEK Energy. No part of this document may be reproduced or transmitted in any form or by any means ??? electronic or mechanical, including photocopying ???

ELTEK FLATPACK POWER SYSTEM 2029299 REV 1



The Hybrid power core has integrated battery distribution, DC load distribution, rectifiers and solar chargers with PV connection panel. The power core is flexible and can easily be upgraded to meet changing demands. A typical hybrid site is powered from PV panels in addition to Gen-set and/or mains connection.



The Flatpack S 1U bulk feed system is designed for external distributions, and due to its many output options it meets the market demand for flexible and expandable DC power solutions.
With its small size, high efficiency, reliability and wide range of communication, the Flatpack S system is the key for future needs.



Eltek, a leader in high efficiency power systems for telecommunications, industrial applications and renewable energy projects, announced the availability of the Flatpack S, a new high-efficiency (HE) DC power system that combines the ability to support 100A in an extremely compact one rack unit (1RU) form factor and enables telecom carriers to broaden the reach of ???

ELTEK FLATPACK POWER SYSTEM 2029299 REV 1



A true plug-and-play system, the Integrated power system reduces both time-to-install and overall costs. Integrated Power System The Integrated DC Power System provides an industry-leading DC power system optimized for the demanding power needs of wireless communications and broadband access equipment. With up to two power shelves and two



The power dense 3U rack Flatpack S. Illustrating the above capabilities is this unique 3U system, a building block for various industrial Power supply systems sharing an Eltek controller, benefit from its extensive communication facilities. They can ???



Eltek Flatpack S 48V 1U ??? Compact HE 1U power systems. Increasing network speed demands flexible and expandable DC power solutions. Due to its small size, high efficiency, reliability and wide range of communication, the Flatpack S System is the key for future needs.

ELTEK FLATPACK POWER SYSTEM 2029299 REV 1



The Eltek Network Utility (ENU) is an Eltek-designed PC application that simplifies and improves the administration of Eltek products with IP network connectivity. It includes several functions and features for effective setup of network parameters, controller firmware update and controller power system configurations. Key features. Free



The Flatpack2 is a two rack-unit high system that delivers 48V DC power to telecom infrastructure. The compact size of the system makes it perfect for use in 19??? wide racks and cabinets. Built as a plug-and-play system, the Flatpack2 ???