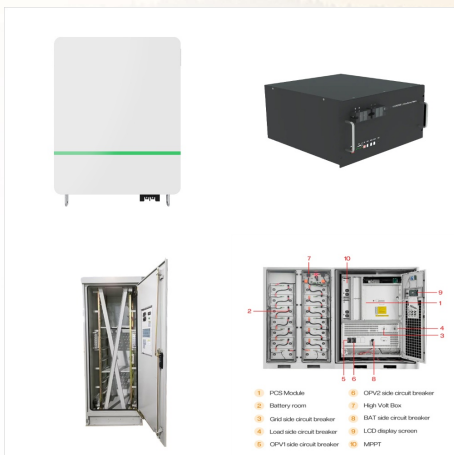




Uptime is everything. Make sure your critical systems can perform even during utility power failure with Liebert uninterruptible power supply (UPS) systems and other power solutions. Computer and Peripheral UPS Server and Network UPS Data Center/3 Phase UPS Floor-Mount Power Distribution Static Transfer Switches



EMERSON ??? Network Power Liebert (R) PSA AC Power System USB Battery Power Supply AC OUTPUT AC INPUT AC INPUT BREAKER Full Time Surge Protection IN OUT SITE WIRING FAULT LED 3 (amber) Fault symbol Overload symbol Utility symbol On/Off button LED 1 (green) Surge outlets (2) NEMA 5-15R USB interface Battery backup outlets (6) NEMA 5-15R Input



UPS Systems Emerson Network Power offers Liebert brand UPS in all three major uninterruptible power supply (UPS) system configurations: high-quality AC power to equipment with no break when 4 Rackmount Uninterruptible Power Supply (UPS) 20-21 Liebert PSI-XR and Liebert PSI Line-Interactive UPS, 750-3000VA

EMERSON LIEBERT PSI AC POWER SYSTEM



AC Power System. LED. Color. LED 1. Green. Solid (steady glow) LED 1. Green. Flashes every 3 seconds. LED 1. Green. Flashes every 1 second till end of discharge (EOD) Related Manuals for Emerson Liebert PSA. UPS Emerson Liebert PowerSure PSP User Manual. Power availability 350-650 va 120v (32 pages)



Liebert PSI 1000-3000VA; Liebert PSI-XR 1000-3000VA 3; Liebert PSP 350-650VA 3; Liebert PSP Stand-by UPS 350-650VA 2; Liebert Remote Monitoring Panel; Emerson Liebert AC Power System User Manual Emerson User Manual. Download. AC Power Systems f. or Business-Critical Continuity.



Liebert power protection uninterruptible power system user's manual ps250-50s 250 va, ps400-50s 400 va, ps600-50s 600 va (13 pages) UPS Liebert UPS Systems PSI XR User Manual. Psi xr 1000/1500/1920/3000va, 60hz, 120vac (32 pages) UPS must be operating in Normal (AC) mode. NOTE Utility power will be applied to the connected load. 3.

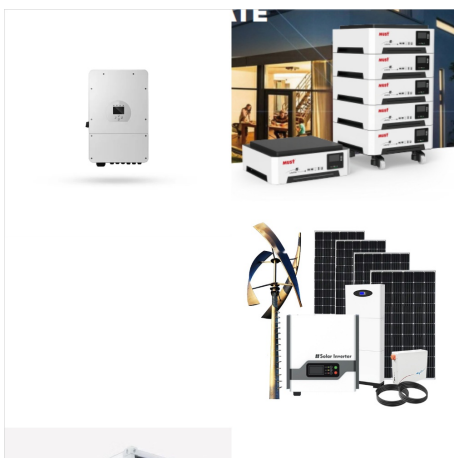
EMERSON LIEBERT PSI AC POWER SYSTEM



Liebert PSI XR 120V User Manual ; Brochures and Data Sheets Liebert PSI Brochure ; Warranties. DC Power Systems Power Distribution Static Transfer Switches Switchgear and Switchboard Busway and Busduct Battery Energy Storage System



Business-Critical Continuity, Emerson Network Power and the Emerson Network Power logo are trademarks and service marks of Emerson Electric Co. (C)2008 Emerson Electric Co. Liebert PSI XR Specifications Model Number PS1000RT3-120XR PS1500RT3-120XR PS2200RT3-120XR PS3000RT3-120XR



View and Download Emerson Liebert GXT3 user manual online. 30V, 5000VA???UL Listed. Liebert GXT3 ups pdf manual download. Page 1 AC Power For Business-Critical Continuity??? Liebert GXT3 230V, Remove screws on the IT Power System Access Cover as shown in Figure 13. 2. Disconnect the connectors as shown in figure.

EMERSON LIEBERT PSI AC POWER SYSTEM



Battery Power Supply AC OUTPUT Full Time Surge Protection IN OUT Surge sockets (2) IEC 320 C13
 ??? The Liebert PSA has been designed for small office/home office use only; it is NOT This product is also designed for IT power systems with phase-to-phase voltage 230V.-TROUBLESHOOTING



AC Power Systems for Business-Critical Continuity Liebert(R)PSI-XR High Performance Rack & Tower UPS For Network Power Protection Liebert PSI-XR is a compact, line-interactive UPS system designed especially for IT applications such as network closets and small data centers. The flexible design of Liebert PSI-XR allows the unit



Liebert(R) GXT4, 500-10,000VA. Recommended to protect mission-critical equipment, Liebert(R) GXT4 is a true on-line UPS that delivers continuous, high-quality AC power with no break when transferring to battery.

EMERSON LIEBERT PSI AC POWER SYSTEM



AC Power for Liebert Business-Critical Continuity™ (R) PSI High Performance Rack & Tower UPS For Network Power Protection Liebert PSI is a compact, line-interactive UPS system designed especially for IT applications such as network closets and small data centers. It provides reliable Emerson Network Power - Headquarters EMEA Via Leonardo Da



When power is interrupted and battery power is low, Liebert MultiLink software can signal the host computer to gracefully shut down the operating system. PAGE 22. Communication 6.4 UPS Communications The Liebert PSI is equipped with a Liebert IntelliSlot port to provide advanced communication and monitoring options.

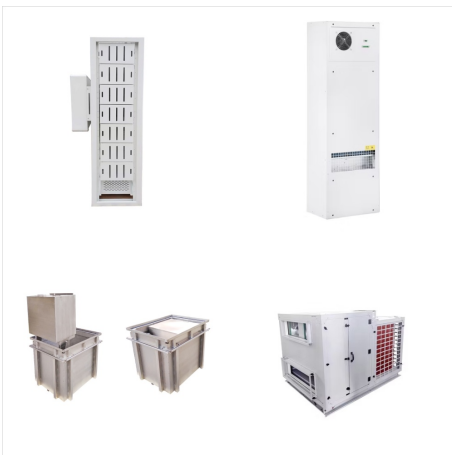


Vertiv??? Liebert(R) PSI5 UPS, 750-5,000VA Line Interactive AVR, Mini Tower, 1U and 2U Rack/Tower. Compact, Automatic Voltage Regulation (AVR) line-interactive UPS system designed especially for IT applications such as network closets and small data centers.

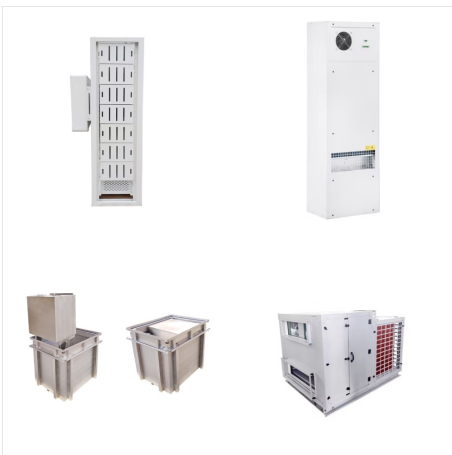
EMERSON LIEBERT PSI AC POWER SYSTEM



AC Power for Liebert Business-Critical High Performance Rack & Tower UPS For Network Power Protection Liebert PSI is a compact, line-interactive UPS system designed especially for IT applications such as network closets and small data centers. Emerson Network Power Via Leonardo Da Vinci 16/18 Zona Industriale Tognana 35028 Piove di

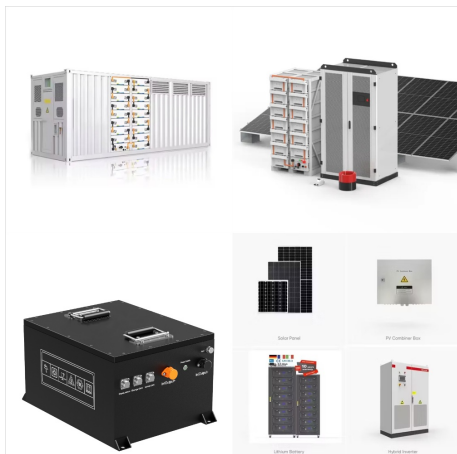


Liebert(R) PSI-XR is a compact, line-interactive UPS system designed especially for IT applications such as network closets and small data centers The flexible design of Liebert PSI-XR allows the unit to be configured as a self-standing tower or to be rack-mounted within a 2U space. It is available in four capacities, in both 230V or 120V models



Vertiv|Liebert(R)PSI???UserManual| 29
DISCONTINUED. ModelNumber PS1000RT3-120 PS1500RT3-120 PS2200RT3-120 PS3000RT3-120
PowerRating,VA/W 1000VA/900W 1500VA/1350W 1920VA/1920W 3000VA/2700W Type
Valve-Regulated,Nonspillable,LeadAcid
QuantityxVoltagexAh 3x36x7 3x36x9 6x72x7 6x72x9 BackupTime

EMERSON LIEBERT PSI AC POWER SYSTEM



View and Download Liebert PSI XR user manual online. 1000/1500/2200/3000VA, 50/60Hz, 230VAC. PSI XR ups pdf manual download. phase uninterruptible power supply systems specification sheet (8 pages) UPS Liebert PowerSure PSI 1000 - 3000VA 60 Hz 120V User Manual Page 1 AC Power For Business-Critical Continuity??? Liebert PSI XR



check with an AC and DC voltmeter to ensure safety before making contact or using tools. Even when the power is turned Off, dangerously high voltage may exist at the capacitor banks. Observe all DC source precautions when near the DC source for any reason. ONLY properly trained and qualified service personnel should perform maintenance on the



The Liebert PowerSure PSA is a line interactive UPS with automatic voltage regulation (AVR) that offers full-featured power protection for sensitive electronic AC Power Systems for Business-Critical Continuity Emerson Network Power Asia Pacific 7/F., Dah Sing Financial Centre 108 Gloucester Rd, Wanchai Hong Kong

EMERSON LIEBERT PSI AC POWER SYSTEM



Liebert(R) PSI is a feature-rich UPS system with industry leading 0.9 power factor. Its high power output delivers When your computer system can't be without power, even for scheduled UPS Transfer Time (AC to DC) 4-6 ms typical Efficiency >96% on Line Mode Surge Protection 220 J ???



Liebert SiteScan allows monitoring and control of virtually any piece of critical support equipment ??? whether located in the next room or in a facility on the other side of the country. This web-based data center monitoring system provides centralized oversight of Liebert precision air, power and UPS units, as well as many other analog or digital devices.



AC Power Systems Connectivity DC Power Systems Embedded Power Integrated Cabinet Solutions Outside Plant Power Switching and Control Precision Cooling Liebert PSI. Specifications. Emerson Network Power Asia Pacific Australia. T: 1800-065345 F: 61-2-97438737. China. T: 86-755-86010808 F: 86-755-86010909