

How many amps can a 512 watt power system provide?

For more information on which cookies we use, [click here](#). The NetSure(TM) 512 Series power system with 2000 watt rectifiers and DC to DC converters provides up to 600 ampsof current for -48 volt systems with up to 400 amps at +24 volts or -58 volts.

Is Vertiv Netsure 5100 a replacement for Emerson Netsure 502?

Read more ... The Emerson NetSure 502 has reached End-of-Life,Power Solutions suggests the Vertiv Netsure 5100 Seriesas a replacement. If it has been a while since...

How many amps does a Netsure 7100 provide?

The Emerson NetSure 7100 power system with 3500 watt or 2000 watt rectifiers and 1500 watt DC to DC converters provides up to 4000 amps... Read more ... The Vertiv NetSure 7100 Compact Series is designed for wireless access and fixed network applications.

Is the Emerson Netsure 502 end-of-life?

The Emerson NetSure 502 has reached End-of-Life,Power Solutions suggests the Vertiv Netsure 5100 Series as a replacement. If it has been a while since... Read more ...

Can a Netsure DC power system be customized?

The NetSure DC power solution can be customizedto fit the exact application. These systems come in extremely dense packages that can be mounted in any indoor or outdoor application for wireless and wireline networks and can be optimized to meet current requirements,while allowing for easy expansion in the future.

What is Emerson Network Power?

Emerson Network Power delivers a full range of Liebert uninterruptible power supplies (UPS) and power distribution units (PDU),from individual data center solutions to integrated systems that keep network closets,computer rooms and data center infrastructure up and running.

EMERSON NETSURE 512 DC POWER SYSTEM



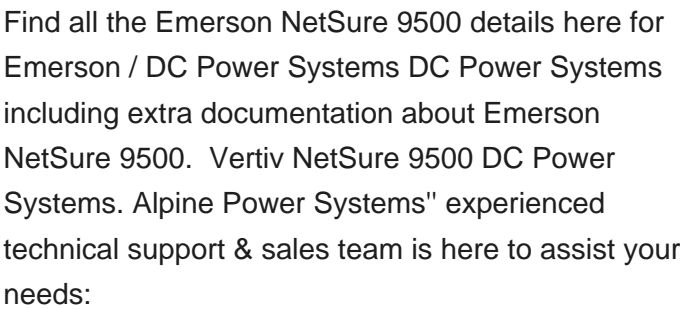
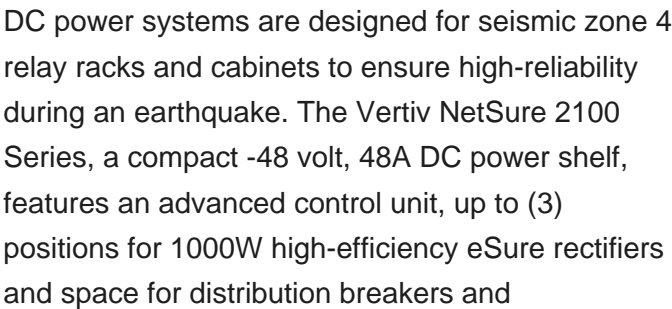
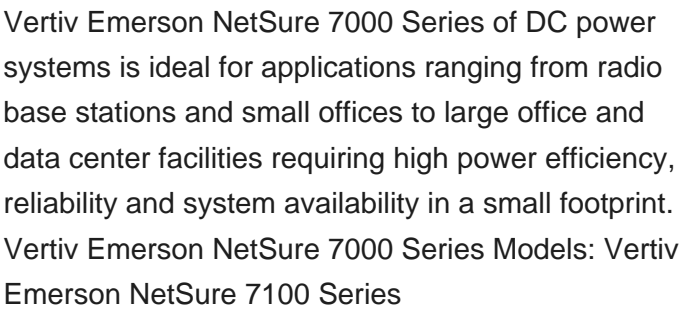
The NetSure 512 Series, a compact -48/+24 volt up to 100 A DC power solution, features an advanced control unit, up to (4) positions for 2000 W high-effici. Search. Search. Products. Vertiv / Liebert Products. UPS Equipment; Deploy the power system where 120VAC is ???



The Vertiv NetSure 2100 Series -48 VDC Power System is an integrated power system containing rectifiers, intelligent control, metering, monitoring, and distribution. The power system is designed to power a load while charging a positive grounded battery.



The power supply system is a constant-voltage DC power device, and short circuit will result in equipment burning and endanger human safety. NetSure 701 AO2 power supply system is composed of NetSure 701 AO2-T1 rectifier cabinet and . 2 Chapter 1 Introduction NetSure 701 AO2, NetSure 701 AO3 Power Supply System User Manual



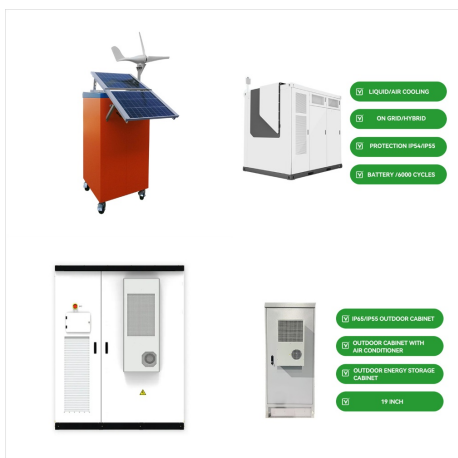
EMERSON NETSURE 512 DC POWER SYSTEM



NetSure???-48V DC Power System User Instructions, UM582127000 (Issue AC, January 2, 2013) Specification Number: 582127000 Model Number: 721NPBB. This page is intentionally blank. User Instructions UM582127000 This document is property of Emerson Network Power, Energy Systems, North America, Inc. and contains confidential and proprietary



The NetSure??? 701 power system with 3200 watt rectifiers is a modular power system providing up to 4,000 amps of power at -48VDC. This simple to install and easy to operate plant is ideal for wireline and wireless applications such as switch sites, co ???

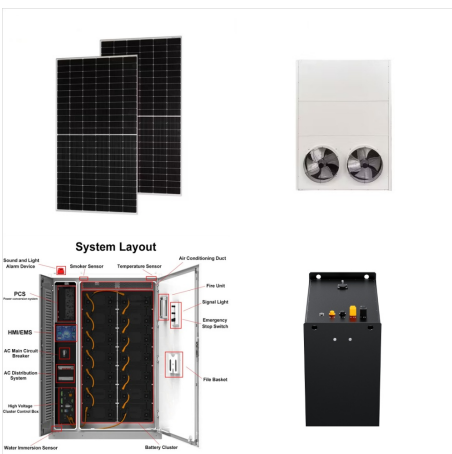


DC Power System. The modular NetSure 710 power system with 3000 watt rectifiers and 1500 watt DC to DC converters provides up to 2000 amps of current for +24 volt systems with up to 500 amps at ???48 volts. Find Sales Contact Get Brochure Get Manual Download Software. Best Suited For:

EMERSON NETSURE 512 DC POWER SYSTEM



The modular NetSure 710 power system with 3000 watt rectifiers and 1500 watt DC to DC converters provides up to 2000 amps of current for +24 volt systems with up to 500 amps at -48 volts. x Fill up the form to start your download



Series. The modular NetSure 7100 Series power system with 3500 watt or 2000 watt rectifiers and DC to DC converters provides up to 12,000 amps of current for -48 volt systems with up to 520 amps at +24 volts or -58 volts.



NetSure 502NGFB SERIES -48V DC Power System . Installation Manual (Section 6009), Revision Z . Specification Number: 582136700 . Model Number: 502NGFB . This system produces DC power and may have a battery source connected to it. Although the DC voltage is not hazardously high, the rectifiers and/or battery can deliver large amounts of

EMERSON NETSURE 512 DC POWER SYSTEM



Series. The modular NetSure??? 7100 Series power system with 3500 watt or 2000 watt rectifiers and DC to DC converters provides up to 12,000 amps of current for -48 volt systems with up to 520 amps at +24 volts or -58 volts.



The NetSure 5100 Series, a compact -48/+24 volt 600 A DC power solution, features an advanced control unit, up to (29) positions for 2000 W high-efficiency eSure rectifiers or 1500 W -48 V to +24 V converters or 2000 W solar converters.



Provides up to 6000 amps at 12 volts DC via high efficiency switch mode rectifiers rated at 3300 watts (275 amps) each and battery backup units (BBUs) rated at 3000 watts (250 amps) each.

EMERSON NETSURE 512 DC POWER SYSTEM



NetSure DC Power systems from Vertiv offer extremely low failure rates, as well as low total cost of ownership, and are designed to work with a wide range of applications. The 1000 W eSure rectifier delivers peak system efficiency above 95%. Maximum value is achieved by an advanced energy optimization function known as ECO mode, enabling



The NetSure??? 512 Series power system with 2000 watt rectifiers and DC to DC converters provides up to 600 amps of current for -48 volt systems with up to. Search. Search. Vertiv??? NetSure??? DC Power Services Test & Turn-Up Data Sheet.pdf; Specification Documentation. SAG582137000 - NetSure 512 System Application Guide;

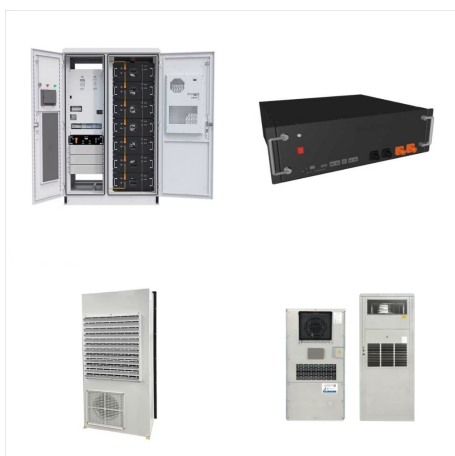


The NetSure 5100 Series, a compact -48 volt DC power solution which can provide +24 volt DC power when equipped with converters, features an advanced control unit, a high efficiency rectifier, converter, solar converter and multiple distribution options to meet the demands of many different applications. The system is

EMERSON NETSURE 512 DC POWER SYSTEM



The NetSure??? 512 Series power system with 2000 watt rectifiers and DC to DC converters provides up to 600 amps of current for -48 volt systems with up to. Search. Search. Products. Vertiv??? NetSure??? DC Power Services Test & Turn-Up Data Sheet.pdf; Specification Documentation. SAG582137000 - NetSure 512 System Application Guide;



The NetSure??? 802 introduces the highest density, power factor corrected, 3-Phase input rectifier on the market. The overall system density now becomes a function of the number of load points that the end customer requires.



The modular NetSure??? 7100 Series power system with 3500 watt or 2000 watt rectifiers and 1500 watt DC to DC converters provides up to 4000 amps of current for -48 volt systems with up to 520 amps at +24 volts. The basic components of the power system include the NetSure Control Unit (NCU), module mounting shelf assemblies

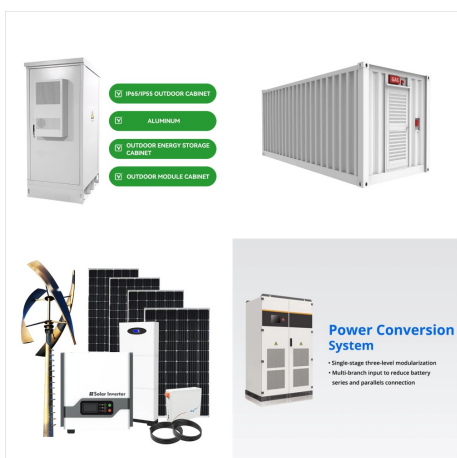
EMERSON NETSURE 512 DC POWER SYSTEM



The NetSure 211 Series, a compact -48 volt 120 A DC power solution, features an advanced control unit, up to (6) positions for 1000 W high-efficiency eSure rectifiers, and integrated distribution options and combines them with an advanced Ethernet-accessible controller.



The NetSure??? 512 Series power system with 2000 watt rectifiers and DC to DC converters provides up to 600 amps of current for -48 volt systems with up to 400 amps at +24 volts or -58 volts. The basic components of the power system include the NetSure Control Unit (NCU), module mounting shelf assemblies which house the rectifiers and converters, and a dual panel ???



The Emerson NetSure 502 has reached End-of-Life, Power Solutions suggests the Vertiv Netsure 5100 Series as a replacement. If it has been a while since you replaced your power system, your needs may have changed. This highly flexible NetSure 502 DC power system is available as an integrated version where space for rectifiers and

EMERSON NETSURE 512 DC POWER SYSTEM



The NetSure??? 512 Series power system with 2000 watt rectifiers and DC to DC converters provides up to 600 amps of current for -48 volt systems with up to. Search. Vertiv??? NetSure??? DC Power Services Test & Turn-Up Data Sheet.pdf; Specification Documentation. SAG582137000 - NetSure 512 System Application Guide;