

Why does my Honda Accord have an emission system problem?

When the warning light indicating an emission system problem comes on in the dashboard of your Honda Accord, it's usually a sign of an imbalance of fuel-to-air ratio in the engine. This can be caused by various reasons, which we'll look at later.

What does the check emission system light mean on a Honda?

The "Check Emission System" warning light indicates that there is a problem with your vehicle's emission control system. This could be due to a malfunctioning component or a system issue affecting the vehicle's emissions, fuel efficiency, or engine performance. Can I continue driving my Honda if the Check Emission System light is on?

Why is addressing Honda's emission system problems important?

In conclusion, addressing Honda's emission system problems is crucial to maintain optimal vehicle performance and fuel efficiency and complying with environmental regulations. Common issues include oxygen sensor malfunction, faulty catalytic converters, damaged exhaust systems, and worn spark plugs.

Should I heed the emission system warning?

Ignoring the emission system warning is not advisable because your engine's components may suffer adverse effects the longer you take to attend to the problem. The light may begin flashing due to exacerbating the original problem.

Does Honda Accord have a nagging emission system warning?

Some Honda Accord drivers have reported often encountering an emission system warning during the first thousand miles of driving.

Can you drive a car with an emission system malfunction?

Driving a car with a malfunctioning emission system could bring you into conflict with the law. Most states make it illegal to drive a car with this issue on public roads. Delaying repairs will only rack up your repair bill as the problem may spread to other components.

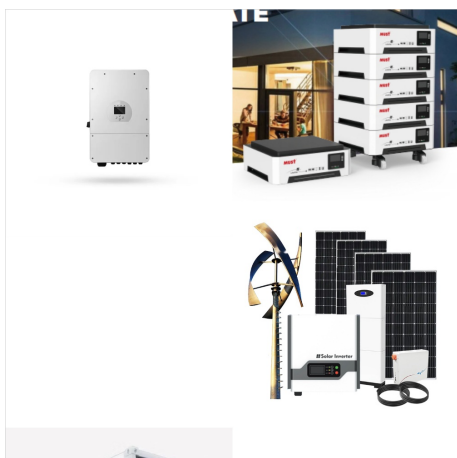
# EMISSION SYSTEM PROBLEM POWER MAY BE REDUCED HONDA



If you have a Honda or Acura, get an "Emissions System Problem" on your dash and pull P0455 and/or P0456 codes, this is the likely issue. Car News If you're in your fairly new Honda or Acura get a troubling message on your dash saying "Emissions systems problem. Power may be reduced. See your dealer," and get the codes P0455 and P0456



The emissions system problem power may be reduced in the Honda Accord 2021 can affect the overall performance of the vehicle. This issue is caused by an incorrect calibration of the Electronic Control Unit (ECU) in the vehicle's emission control system.



Driving my 2017 CRV yesterday the Emission System Problem came up on the dash. I just crossed 30KM and never been ruggedly used or anything. These vehicles are fucking duds and I wish I never bought it. Best part my warranty ran out 3 days ago. POS. Honda used to be a reliable vehicle, I don't believe this anymore. Thinking trade in.

# EMISSION SYSTEM PROBLEM POWER MAY BE REDUCED HONDA



Ignoring the check emission system message can result in increased emissions and potential damage to the engine, ultimately leading to more costly repairs down the line. What Causes Honda Emission System Problem? Here are the common causes of a check emission system warning message on your Honda dashboard: 1. Oxygen sensor malfunction



At 95 miles got check engine light - "Emissions System Problem". Vehicle has been to dealer for repairs for this issue multiple times, issue continues. Has anyone else had this issue? trained and certified by Honda.. literally for each major system diagnostic/repair. 2) trained to follow Honda provided diagnostic work flows to troubleshoot



"Emissions System Problem; Power May Be Reduced. See Your Dealer" Sigh.. this car is starting to give me a headache. Previously my car had stopped on me, out of no where within the first 5000 miles, I had to get it towed to Honda only to find out the fuel pump has failed even though my VIN was not on the recall list. Power System Problem Do Not

# EMISSION SYSTEM PROBLEM POWER MAY BE REDUCED HONDA



Emissions System Problem on a Honda Civic Main Causes. Honda Civic catalytic converters do get dirty and clogged over time and this can cause a few emissions and power issues, you can use a reputable catalytic Converter cleaner or have the Honda dealership do it for you which is what I recommend. 3. Dirty Fuel Injectors:



I bought a Brand New Honda Accord 2019 Sport on 12/29/2019. It had hardly been two days and this message popped up ""Emission System Problem, Power may be reduced, Go see your dealer".



My Honda accord 2018 Lx showing me on dashboard Emissions System Problem, power may be reduced. See your dealer???. I notice when I'm driving the car the check light we come up and blink then the car we not move anymore until I remove the battery terminal and put it back, the check we disappear again, if I move the car again it we show me something and the ???



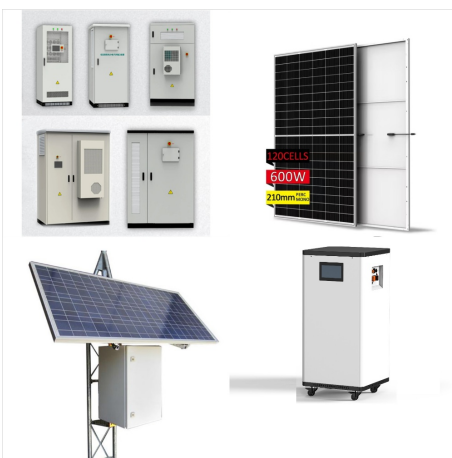
# EMISSION SYSTEM PROBLEM POWER MAY BE REDUCED HONDA



On Saturday morning I go to run some errands and out of nowhere I get the CEL with a brief message, "Problem with Emissions System. Reduced power may occur." So instead of risking "limp mode", or worse - total power loss while on the freeway, I took it ???



"Emissions system problem. Power may be reduced. See your dealer" we may earn an affiliate commission, which supports our community. crvownersclub is an independent Honda enthusiast website owned and operated by VerticalScope Inc. Content on crvownersclub is generated by its users. crvownersclub is not in any way



What Does "Emission System Problem" in Honda Civic means? It is common for drivers to find their Honda Civic displaying the message "Emission System Problem. Power may be reduced. See your dealer." This is quite common for many of the latest Honda Civic models. When this happens or when the Check engine light symbol comes on, this indicates a

# EMISSION SYSTEM PROBLEM POWER MAY BE REDUCED HONDA



Anyone else have issues with a frequent "emission system problem" CEL? I have a "22 Insight with 13k miles that has been into the dealership 3 times now for the same problem. The car drives fine, but every couple of weeks the CEL comes on and the gauge cluster says "Emissions system problem. Power may be reduced. See your dealership."

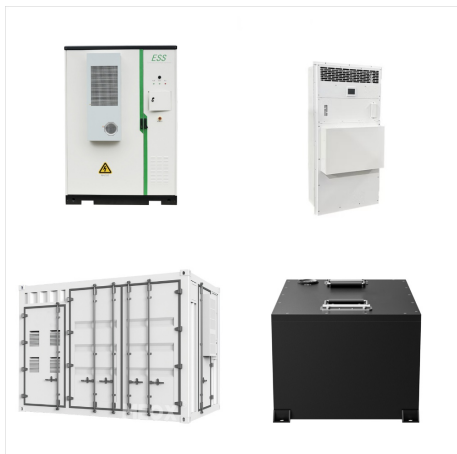


Just got back from grocery shopping. On the way to the store I got a check engine light pop up that says "Emissions System Problem". My car only has 20,271 miles and I've brought it in for all of the schedule maintenance checkups at the dealership where I bought it. I don't think any dealership service departments are open today since it's Sunday.



So less than four months after buying my Honda, an "Emissions System Problem" showed up on my dash when I started up the car one morning before work. Or if you use 85 octane the message will appear. So the octane may not be sufficient. Topped off with 91 octane and problem goes away. Maybe the midgrade octane is not always 87 or above

# EMISSION SYSTEM PROBLEM POWER MAY BE REDUCED HONDA



When the Honda Civic displays "Emission System Problem," it implies that the emission sensors have detected a problem with the emission system, which can be caused by various factors. These factors include those unrelated to the catalytic converter or exhaust. Causes of Emission System Problems. Failure of a Catalytic Converter



The "Check Engine Light" on your Honda dashboard, accompanied by a "Check Emission System" message, indicates a potential problem within the emission control network. This light serves as a crucial warning, prompting you to address the issue to maintain optimal engine performance and environmental responsibility.



The results were that my Fuel cap is loose, but I have a 2022 Honda Civic sport, which has a capless fuel cap. My cars warning alert says "Emissions system problem. Power may be reduced". I called my Honda dealership And they asked me to bring it in for a diagnostic there, but I am currently four hours away.

# EMISSION SYSTEM PROBLEM POWER MAY BE REDUCED HONDA



In this article, we will discuss the emission system problems of Honda. What does an emission system problem mean in a Honda Pilot? A severe problem in an engine's emission control system can trigger the onboard computer to log a fault. An emission system problem alert will accompany this problem on a Honda Pilot, which informs the driver



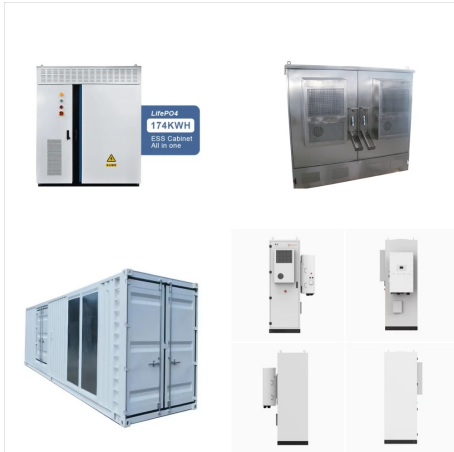
If there is a component that could cause problems with the emissions, the Check Emission System message will appear on the dashboard. What Causes A Check Emission System Message? The most common causes of a Check Emission System message are a faulty oxygen sensor, loose gas cap, dirty air filter, worn catalytic converter, or an exhaust or



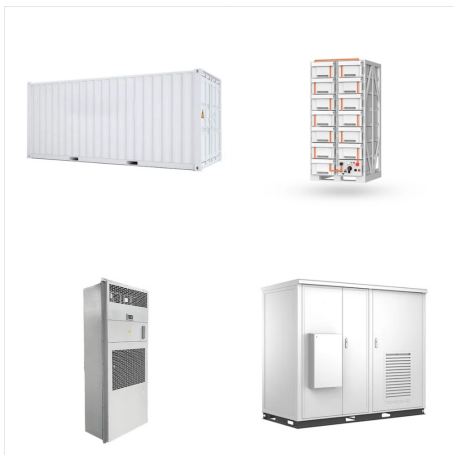
One month old car with about 670 miles on it. Got a full tank of gas this afternoon and when I started it up, the "Emissions systems problem. Power may be reduced. See your dealer." alert came on.



# EMISSION SYSTEM PROBLEM POWER MAY BE REDUCED HONDA



"Emissions System Problem; Power May Be Reduced. See Your Dealer" Sigh.. this car is starting to give me a headache. Previously my car had stopped on me, out of no where within the first 5000 miles, I had to get it towed to Honda only to find out the fuel pump has failed even though my VIN was not on the recall list. Power System Problem Do Not



Engine sputtering or misfiring When your emission system pulls the wrong amount of fuel, it may flood your engine or not be enough to power your vehicle. If you notice a misfire, see a drop in RPMs, have difficulty shifting or accelerating, or detect your engine hesitating, it may be a sign that fuel isn't burning properly and causing your



Although Honda vehicles are known for their reliability and performance, like any complex machinery, Honda vehicles are not immune to occasional issues and the emission system problem Honda is one of these. ???

# EMISSION SYSTEM PROBLEM POWER MAY BE REDUCED HONDA



When I start my Honda Accord 2018 Sport in the morning or after leaving it for 2-3 hours, the car vibrates heavily for about 2 minutes, then stops vibrating. Sometimes the engine light comes on with the message Emissions System Problem. Power ???