

Why does my Honda Accord have an emission system problem?

When the warning light indicating an emission system problem comes on in the dashboard of your Honda Accord, it's usually a sign of an imbalance of fuel-to-air ratio in the engine. This can be caused by various reasons, which we'll look at later.

What happens if a car has an emission problem?

Drive as little as possible until you diagnose and fix the emission problem. There's a chance you could damage your engine or emission system the longer you drive with issues. Emission problems also introduce more harmful pollution into the environment.

What happens if you have a bad emission system?

This also means drivability may be affected and unsafe to drive. A problem with the emission system could also get you ticketed by the police in some states since it's a cause for the emission of a lot of harmful gases such as hydrocarbons, carbon monoxide, volatile organic compounds, nitrogen oxides, and sulfur dioxide into the environment.

What causes a bad emission system?

Causes of the emission system problem may range from a small issue, such as a loose gas cap, to a complicated case, such as a faulty catalytic converter, which is more costly and outside the scope of do-it-yourself home mechanics.

Why does my Honda Civic have an emission system problem?

There are many possible reasons for an emission system problem in your Honda Civic. These include the following: The gas cap maintains pressure in your Honda Civic's fuel tank. It also keeps fumes from being released into the air. There are many ways the gas cap can be the cause. It can be loose, missing, or simply damaged.

What parts do I need to check the emission system?

EMISSION SYSTEM PROBLEM POWER MAY BE REDUCED SEE YOUR DEALER



These parts include the carbon canister, carbon vent valve, fuel tank, gas cap, evaporative canister purge valve, vapor recirculation tube, etc. You can expect the check emission system light to come on or a message on your dashboard screen to check the emission system once any of these components develop a fault.



"Emissions System Problem; Power May Be Reduced. See Your Dealer" Sigh.. this car is starting to give me a headache. Previously my car had stopped on me, out of no where within the first 5000 miles, I had to get it towed to Honda only to find out the fuel pump has failed even though my VIN was not on the recall list. Power System Problem Do Not



After finally getting my car back from the dealership after nearly two weeks because of a misaligned panel and door rubbing on each other, I now have the emissions system problem light on (again). I actually had this light on the minute I picked it up but they took care of it immediately and said it was because the gas door had not been closed

EMISSION SYSTEM PROBLEM POWER MAY BE REDUCED SEE YOUR DEALER



Sitting in honda dealership right now with my 2018 crv that has an emissions problem code displayed with the check engine light on. Service tells me they can run the code and get an idea of what is wrong or run a full diagnostics, but if they can't replicate the problem I will have to pay \$99.



DIY repairs for your emission system and when to see a mechanic Did you recently fail an emissions test or notice your vehicle suddenly running poorly? When there's a problem with your emission system, it may pull more fuel into your engine and increase your gas consumption. it may flood your engine or not be enough to power your



This list of causes is not exhaustive; a different component may have triggered your emission system warning light. Your emission system comprises various components, and any malfunction could trigger the emission system warning. The problem could also be caused by less likely factors, e.g., a valve leak in your ERG or a leak in your exhaust

EMISSION SYSTEM PROBLEM POWER MAY BE REDUCED SEE YOUR DEALER



Ignoring the check emission system message can result in increased emissions and potential damage to the engine, ultimately leading to more costly repairs down the line. What Causes Honda Emission System Problem? Here are the common causes of a check emission system warning message on your Honda dashboard: 1. Oxygen sensor malfunction



Hello Everyone, I have a 2020 Sierra 2500 Duramax Denali, 27,000 miles. The DIC is showing the following two messages, (Service Emission's System, 175 mi Until 65 MPH Max Speed). The dealer picked it up and gave me a loaner vehicle. They called and said the DEF tank needs to be replaced, warranty will cover everything.



Hi all. I have the same issue "power system problem" on my honda accord 2018 (26k miles). Dealership does not sell hybrids in my country, so they just tested and confirmed the failure of power system, but did not investigate an issue thoroughly.. I hope the issue is minor and no serious damage of HV battery. Any thoughts?

EMISSION SYSTEM PROBLEM POWER MAY BE REDUCED SEE YOUR DEALER



Im having the same problem yesterday after they serviced my car A 1, I was coming back from work stop at the store,when I start my car this message appears " emmissions system problem power may be reduced see your dealer " the car feels normal but I'm worried, unfortunately the service department is closed I have to wait until tomorrow monday



See your dealer". -"Brake system problem. Brake performance may be reduced. See your dealer". -"Electric Power Steering System Problem. Steering reduced. See your dealer". -"Vehicle stability



I purchased my dream car, a new 2021 honda accord sport 2 0. Just today it throws the, "Emission System Problem. Power may be reduced, see your dealer." Right at the 100 mile mark. I am now spooked this car is going to be a lemon with constant issues and I just dont want to deal with it all.

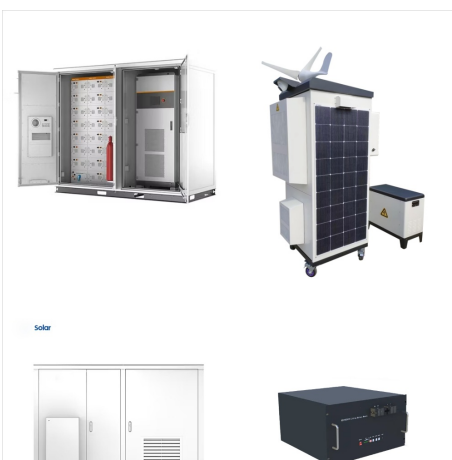
EMISSION SYSTEM PROBLEM POWER MAY BE REDUCED SEE YOUR DEALER



I am going to leave the car with dealer until repair, but wanted to post this out here to see if anyone else has experienced this issue or just to give the community a heads up. of a gallon). I don't think this emissions issue is caused by the quality in gasoline or by overfilling the tank. The dealer may be correct that it's a faulty valve



Another update. While I was driving, I got another message on the dashboard: "AWD All wheel drive system problem. Only front wheels maybe powered. See your dealer." Anyone experienced this before? The car is literally 1 month off the lot. This is getting ridiculous. I hope this is a software issue which will go away soon



The message also warns you that your car's power may be reduce and that you should see your dealer for diagnosis and repair. This indicates that the problem is serious and could affect your car's performance and emissions. However, this system can still malfunction and cause an emission system problem. There may be a problem with the fuel

EMISSION SYSTEM PROBLEM POWER MAY BE REDUCED SEE YOUR DEALER



"Emissions system problem. Power may be reduced. See your dealer" Had it towed in again this morning. I'd start thinking about approaching the dealership or Honda for the possibility of a buy back and check into your state's Lemon Law too depending on the outcome here. 2024 CR V hybrid, catastrophic engine damage, the dealer bought



If you're in your fairly new Honda or Acura get a troubling message on your dash saying "Emissions systems problem. Power may be reduced. See your dealer," and get the codes P0455 and P0456 on your scan tool, chances are you shouldn't sweat it.



Power may be reduced. See your dealer." There are many possible reasons for an emission system problem in your Honda Civic. These include the following: Faulty or Loose Gas Caps; The gas cap maintains pressure in your Honda Civic's fuel tank. It also keeps fumes from being released into the air. There are many ways the gas cap can be the cause.

EMISSION SYSTEM PROBLEM POWER MAY BE REDUCED SEE YOUR DEALER



Anyone else have issues with a frequent "emission system problem" CEL? I have a "22 Insight with 13k miles that has been into the dealership 3 times now for the same problem. The car drives fine, but every couple of weeks the CEL comes on and the gauge cluster says "Emissions system problem. Power may be reduced. See your dealership."



Troubleshooting Emissions System Problem On Honda Accord. Check your car's engine light for any emissions system problems. If water is leaking into your air conditioning, it may cause freezing and other issues. The check engine light on a Honda Accord will turn on when you have a problem with the mass air flow sensor.



On Saturday morning I go to run some errands and out of nowhere I get the CEL with a brief message, "Problem with Emissions System. Reduced power may occur." So instead of risking "limp mode", or worse - total power loss while on the freeway, I took it ???

EMISSION SYSTEM PROBLEM POWER MAY BE REDUCED SEE YOUR DEALER



The dealer has had my 2018 GMC Terrain Diesel twice for over 30 days total. Back before Christmas, I took my Terrain in because the "DIC" showed a display that read: SERVICE EMISSION SYSTEM SEE OWNERS MANUAL NOW 175 MILES UNTIL 65 MPH MAX SPEED At the same time another DIC message came on and said "Engine Power is Reduced".



When you encounter an "emissions system problem" in a Honda vehicle, it refers to an issue or malfunction within the vehicle's emission control system. Like in any other model vehicle, Honda's emission system is designed to reduce harmful pollutants emitted into the atmosphere as a result of the combustion process.



One month old car with about 670 miles on it. Got a full tank of gas this afternoon and when I started it up, the "Emissions systems problem. Power may be reduced. See your dealer." alert came on.

EMISSION SYSTEM PROBLEM POWER MAY BE REDUCED SEE YOUR DEALER



The most blatant signal that you have an emissions system problem in your Honda Accord is that little emission system warning light that pops up on your dashboard. No, it's not a decorative feature to ignore; it's there for a reason. displaying reduced engine power and performance. Perhaps it has developed an insatiable thirst for fuel



See your Dealer" Transmission, Brake system, Electric Power steering, Vehicle stability assist, Hill Start Assist, TPMS, Emission System, Auto Idle Stop, Adaptive Cruise Control, Lane Keeping Assist, Collision Mitigation, Road departure Mitigation, & Charging system.