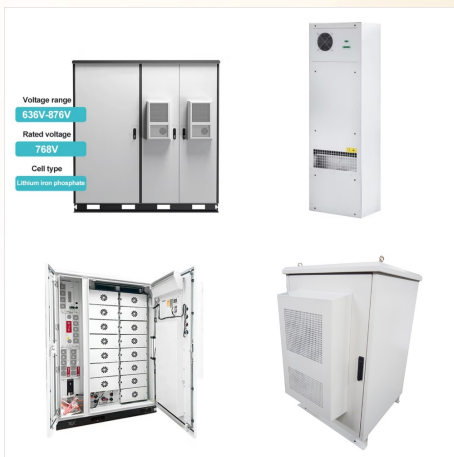
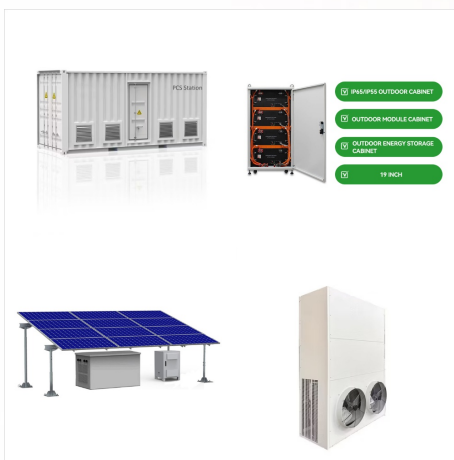




Get long-lasting power and reliable performance with the Manfrotto EN-EL15 Professional Lithium-Ion Battery for Select Nikon Cameras. This EN-EL15-style battery is compatible with Nikon D500, D600, D7000, D7100, D7200, D800, D800E, D810, V1, Z 6, and Z 7 cameras and uses UL-approved cells for extended life cycle, performance, and safety.



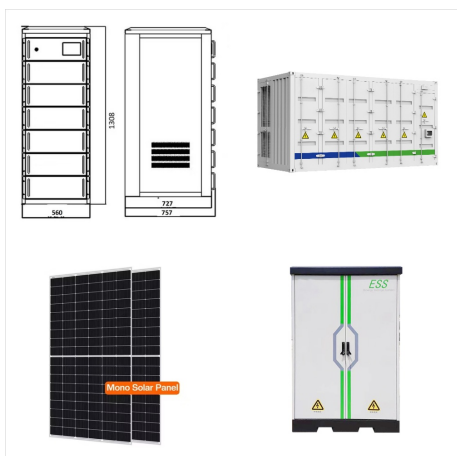
Compact rechargeable lithium-ion battery with high capacity for long operating life. This battery is compatible with specific Nikon cameras. It can be charged in-camera when used with a Nikon camera that supports in-camera battery charging.



The EN-EL15c is a Rechargeable Lithium-ion battery for use with select Nikon cameras. Compatible With Nikon Models: Z 7II, Z 6II, Z 5, Z 7, Z 6, D780, D850, MB-N11 Power Battery Pack Compatible with MH-25a Battery Charger



Used together with your Nikon D-SLR, the camera's fuel gauge accurately displays the remaining charge and number of shots since the last charging. The EN-EL15 is a rechargeable Li-ion battery which powers the Nikon 1 V1 digital camera. It is supplied with the camera.



Nikon Rechargeable Li-ion Battery (7.0V, 2280mAh)  
EN-EL15C. HK\$ 380 - 500. HK\$ 350 - 450. i 1/4 ? .  
/i 1/4 ? . i 1/4 ? 7V. i 1/4 ? 2280mAh. i 1/4 ? Nikon Z  
f, Z 8, Z 7II, Z 6II, Z 7, Z 6, Z 5, D780, D610, D7500,  
D850, D7200, D500, D7100, D810A, D750, D810.  
a??., a?|



Charge with MH-25/MH-25a or EH-7P/EH-8P.  
Power select Nikon cameras with the EN-EL15c  
rechargeable lithium-ion battery. This battery has  
the EN-EL15 form factor and can be used as a  
higher capacity substitute for previous generation  
batteries.



The EN-EL15c is a Rechargeable Lithium-ion battery for use with select Nikon cameras. It can be charged using either the MH-25a battery charger or the EH-7P charging AC adapter when used with Nikon cameras that have the capability to charge batteries in-camera.



Nikon EN-EL15b Rechargeable Li-ion Battery.  
Description: The EN-EL15b is a Rechargeable Lithium-ion battery for use with select Nikon cameras. It can be charged using either the MH-25a battery charger or the EH-7P charging AC adapter.



;, /;, :7V, :1900mAh, :Nikon D7000, Nikon Rechargeable Li-ion Battery (7.0V, 1900mAh) EN-EL15 ,a??a??,.



The EN-EL15, EN-EL15a and EN-EL15b Rechargeable Li-ion batteries are generally cross-compatible however electrical performance is improved with successive versions so using an earlier battery in a camera designed for use with a later battery will result in