

What is a pumped storage hydropower facility?

Pumped storage hydropower facilities use water and gravity to create and store renewable energy. Learn more about this energy storage technology and how it can help support the 100% clean energy grid the country--and the world--needs.

What is pumped storage hydropower (PSH)?

Pumped storage hydropower (PSH) is a type of hydroelectric energy storage. It is a configuration of two water reservoirs at different elevations that can generate power as water moves down from one to the other (discharge), passing through a turbine. The system also requires power as it pumps water back into the upper reservoir (recharge).

What is a pumped storage facility?

Pumped storage facilities are built to push water from a lower reservoir uphill to an elevated reservoir during times of surplus electricity. In pumping mode, electric energy is converted to potential energy and stored in the form of water at an upper elevation, which is why it is sometimes called a "water battery".

Why is pumped storage hydropower important?

As the global community accelerates its transition toward renewable energy, the importance of reliable energy storage becomes increasingly evident. Among the various technologies available, pumped storage hydropower (PSH) stands out as a cornerstone solution, ensuring grid stability and sustainability.

How do pumped storage plants generate electricity?

When there is higher demand, water is released back into the lower reservoir through a turbine, generating electricity. Pumped storage plants usually use reversible turbine/generator assemblies, which can act both as a pump and as a turbine generator (usually Francis turbine designs).

How does a pumped hydroelectricity storage system work?

In pumped hydroelectricity storage systems, the turbine can become a pump: instead of the generator

ENERGY CAN BE STORED IN A PUMPED STORAGE POWER STATION



producing electricity, electricity can be supplied to the generator which causes the generator and turbine to spin in the reverse direction and pump water from a lower to an upper reservoir.



Large-scale: This is the attribute that best positions pumped hydro storage which is especially suited for long discharge durations for daily or even weekly energy storage applications.. Cost-effectiveness: thanks to its lifetime and scale, pumped hydro storage brings among the lowest cost of storage that currently exist.. Reactivity: the growing share of intermittent sources ???



Pumped storage hydro ??? "the World's Water Battery" Pumped storage hydropower (PSH) currently accounts for over 90% of storage capacity and stored energy in grid scale applications globally. The current storage volume of PSH stations is at least 9,000 GWh, whereas batteries amount to just 7-8 GWh. 40 countries with PSH but China, Japan

ENERGY CAN BE STORED IN A PUMPED STORAGE POWER STATION



Pumped storage has also been critical in making the business case for renewable energy in China, Ms. Liu said, because the national grid is not prepared to take on 100 percent of the wind and



Pumped storage hydropower facilities use water and gravity to create and store renewable energy. Learn more about this energy storage technology and how it can help support the 100% clean energy grid the country???and the world???needs.



Pumped Hydroelectric Storage. Pumped hydroelectric storage facilities store energy in the form of water in an upper reservoir, pumped from another reservoir at a lower elevation. During periods of high electricity demand, power is generated by releasing the stored water through turbines in the same manner as a conventional hydropower station.

ENERGY CAN BE STORED IN A PUMPED STORAGE POWER STATION



(b)????????????? Energy can be stored in a pumped storage power station. The figure shows a pumped storage power station. When electricity is needed, the water in the high level reservoir is allowed to flow to the low level reservoir. The flowing water generates electricity. Use the correct answer from the box to complete each sentence. ???



Energy from the Earth's core is used to heat water.
Fission of uranium nuclei is used to heat water.
Gases from rotting plant material are burned to heat water. 1 (b) Energy can be stored in a pumped storage power station. Figure 1 shows a pumped storage power station. Figure 1 High level reservoir
Low level reservoir Turbines and electrical



In April, the Office of Energy Efficiency and Renewable Energy's Water Power Technologies Office, Operating similar to a reversible pumped storage turbine, INGEN can store or generate electricity through pumping or release of pressurized water. If successful, the technology has the potential to enable the development of pumped storage in

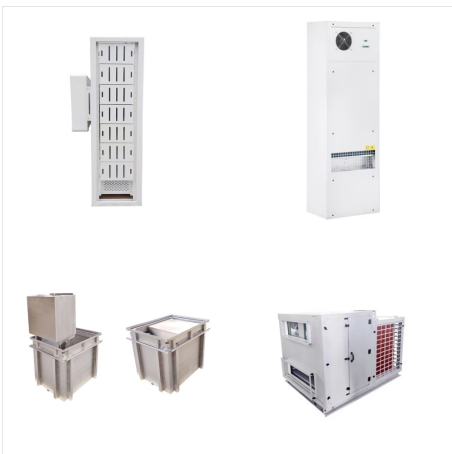
ENERGY CAN BE STORED IN A PUMPED STORAGE POWER STATION



Energy storage systems for electricity generation operating in the United States Pumped-storage hydroelectric systems. Pumped-storage hydroelectric (PSH) systems are the oldest and some of the largest (in power and energy capacity) utility-scale ESSs in the United States and most were built in the 1970's. PSH systems in the United States use electricity from electric power grids to ???



Pumped storage facilities are built to push water from a lower reservoir uphill to an elevated reservoir during times of surplus electricity. In pumping mode, electric energy is converted to potential energy and stored in the form of water at an upper elevation, which is why it is sometimes called a "water battery".



Introduction. Pumped storage power plants are a type of hydroelectric power plant; they are classified as a form of renewable (green) power generation.. Pumped storage plants convert potential energy to electrical energy, or, electrical energy to potential energy. They achieve this by allowing water to flow from a high elevation to a lower elevation, or, by pumping water from a ???

ENERGY CAN BE STORED IN A PUMPED STORAGE POWER STATION



Pumped storage is the process of storing energy by using two vertically separated water reservoirs. Water is pumped from the lower reservoir up into a holding reservoir. Pumped storage facilities store excess energy as gravitational potential energy of water. Since these reservoirs hold such large volumes of water, pumped water storage is considered to be a large scale ???



The pumped-storage facility Cruachan power station can store surplus power from intermittent energy sources such as solar and wind during the off-peak period and can achieve full load in 30 seconds and operate at full capacity for a period of ???



Old School Waterpower Primes Clean Energy Future Our blueprint to serve customers reliable energy with net zero carbon emissions by 2040, the Clean Energy Plan, is made possible by a 50-year-old hydroelectric plant nestled on the shores of Lake Michigan. The Ludington Pumped Storage Plant, co-owned by Consumers Energy (51%) and DTE Electric (49%), is a key ???

ENERGY CAN BE STORED IN A PUMPED STORAGE POWER STATION



(b) Energy can be stored in a pumped storage power station. The figure shows a pumped storage power station. When electricity is needed, the water in the high level reservoir is allowed to flow to the low level reservoir. The flowing water generates electricity. Use the correct answer from the box to complete each sentence.

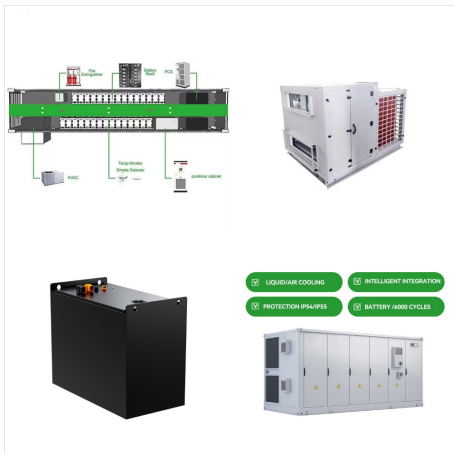


The pumped storage power station (PSPS) is a special power source that has flexible operation modes and multiple functions. With the rapid economic development in China, the energy demand and the peak-valley load difference of ???

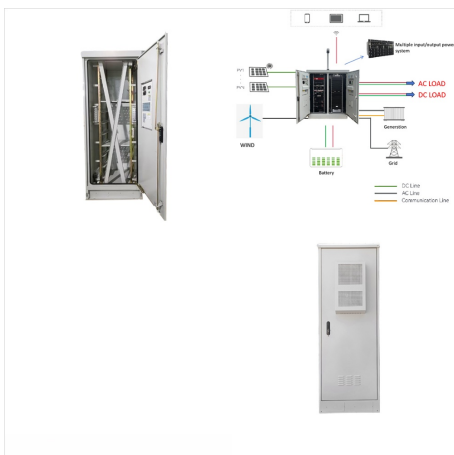


PUMPED HYDROPOWER STORAGE Pumped Hydropower Storage (PHS) serves as a giant water-based "battery", helping to manage the variability of solar and wind power 1 **BENEFITS** Pumped hydropower storage (PHS) ranges from instantaneous operation to the scale of minutes and days, providing corresponding services to the whole power system. 2

ENERGY CAN BE STORED IN A PUMPED STORAGE POWER STATION



The Ludington Pumped Storage Plant is a hydroelectric plant and reservoir in Ludington, Michigan was built between 1969 and 1973 at a cost of \$315 million and is owned jointly by Consumers Energy and DTE Energy and operated by Consumers Energy. At the time of its construction, it was the largest pumped storage hydroelectric facility in the world.



Such complexes are called "pumped storage plants". In the area of energy storage, they are definitely the record-keepers. Energy can be stored in other ways, in electric batteries, or thermally in huge reservoirs of molten salts or as compressed air, (the Chapter 11 in this text is devoted specifically to energy storage methods).

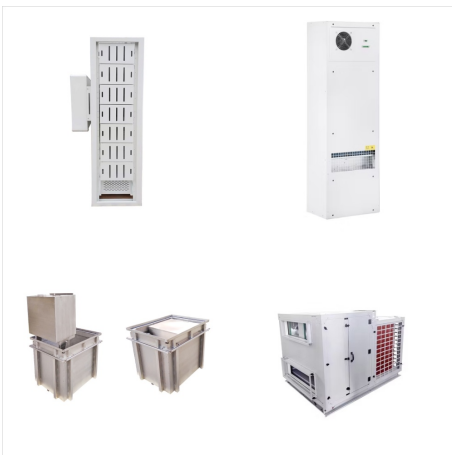


Another type of hydropower, called pumped storage hydropower, or PSH, works like a giant battery. A PSH facility is able to store the electricity generated by other power sources, like solar, wind, and nuclear, for later use. These facilities store energy by pumping water from a reservoir at a lower elevation to a reservoir at a higher elevation.

ENERGY CAN BE STORED IN A PUMPED STORAGE POWER STATION



The Bath County Pumped Storage Station has a maximum generation capacity of more than 3 gigawatts (GW) and total storage capacity of 24 gigawatt-hours (GWh), the equivalent to the total, yearly electricity use of about 6000 homes.. Construction began in March 1977 and upon completion in December 1985, the power station had a generating capacity of ???



According to Imre Gyuk, who manages the Energy Storage Research Program at the U.S. Department of Energy, we can avoid massive blackouts like the big one in 2003 by storing energy on the electric grid. Energy could be stored in units at power stations, along transmission lines, at substations, and in locations near customers.



Pumped-storage hydroelectricity allows energy from intermittent sources (such as solar, wind, and other renewables) or excess electricity from continuous base-load sources (such as coal or nuclear) to be saved for periods of higher demand. [1] [2] The reservoirs used with pumped storage can be quite small, when contrasted with the lakes of conventional hydroelectric plants ???

ENERGY CAN BE STORED IN A PUMPED STORAGE POWER STATION



The new Summit pumped storage power plant in Ohio, USA, has a planned installed capacity of 1.5x10³ MW, and its lower reservoir uses an abandoned mine [91]. With adequate control of evaporation and leakage, the energy stored in a pumped-storage reservoir can be retained indefinitely. This is not a significant advantage when most plants



Despite pumped storage providing 94% of bulk energy storage capacity in the U.S., adding more wind and solar generation requires greater amounts of storage and operational flexibility to assure grid resilience. A PSH plant can pump water to the upper reservoir and store it for later use. That gives PSH the flexibility to inject power into

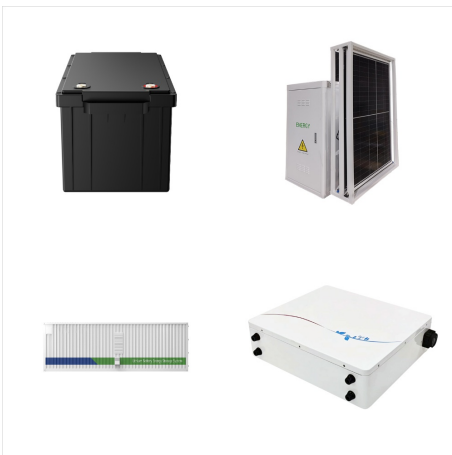


A pumped-storage plant works much like a conventional hydroelectric station, except the same water can be used over and over again. Water power uses no fuel in the generation of electricity, making for very low operating costs. Duke Energy operates two pumped-storage plants ??? Jocassee and Bad Creek.

ENERGY CAN BE STORED IN A PUMPED STORAGE POWER STATION



Energy storage systems in modern grids???Matrix of technologies and applications. Omid Palizban, Kimmo Kauhaniemi, in Journal of Energy Storage, 2016. 3.2.2 Pumped hydro storage. Electrical energy may be stored through pumped-storage hydroelectricity, in which large amounts of water are pumped to an upper level, to be reconverted to electrical energy using a ???



Tehachapi Energy Storage Project, Tehachapi, California. A battery energy storage system (BESS) or battery storage power station is a type of energy storage technology that uses a group of batteries to store electrical energy. Battery storage is the fastest responding dispatchable source of power on electric grids, and it is used to stabilise those grids, as battery storage can ???



With the increasing global demand for sustainable energy sources and the intermittent nature of renewable energy generation, effective energy storage systems have become essential for grid stability and reliability. This paper presents a comprehensive review of pumped hydro storage (PHS) systems, a proven and mature technology that has garnered significant interest in ???

ENERGY CAN BE STORED IN A PUMPED STORAGE POWER STATION



The Kidston pumped hydro project in Australia uses an old gold mine for reservoirs. Genex Power. Batteries deployed in homes, power stations and electric vehicles are preferred for energy storage



Pumped storage hydropower (PSH) is a form of clean energy storage that is ideal for electricity grid reliability and stability. PSH complements wind and solar by storing the excess electricity ???



Pumped storage hydro (PSH) is a large-scale method of storing energy that can be converted into hydroelectric power. The long-duration storage technology has been used for more than half a century to balance demand on Great Britain's electricity grid and accounts for more than 99% of bulk energy storage capacity worldwide.