

How is energy consumed in Guam?

In Guam, the consumption of energy is heavily influenced by its remote location. Almost all energy is reliant on imports of petroleum products for use in transport and electricity. Guam does not have any domestic production of conventional fuels such as oil, natural gas, or coal.

Why does Guam need fossil fuels?

Due to geographic isolation and lack of local energy supply, Guam depends on imported fossil fuels to meet all its energy needs. Liquid fuel supply chains are vulnerable to physical, political, and cybersecurity threats as well as market conditions, which can result in supply uncertainty, price volatility, and high energy costs.

Why is Guam reliant on imported fuel?

With no indigenous fossil energy resources, Guam is reliant on imported fuel for their energy and transportation needs, with most of the imported fuel coming from Asia. The Guam Power Authority (GPA) is a public-power utility and autonomous agency of the government of Guam.

What data is available on Guam's energy sector?

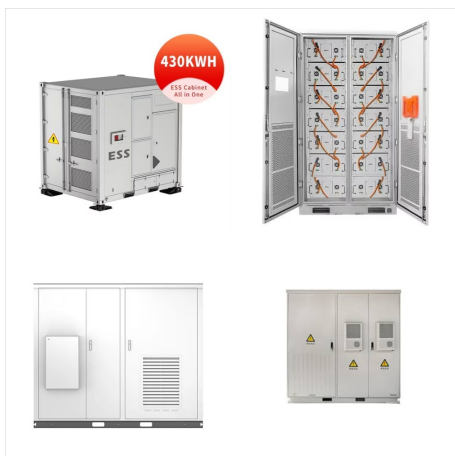
**Introduction** This report summarizes the currently available data on Guam's energy sector as of December 2023. It describes primary energy consumption, end uses, energy production, relevant policies, and key challenges, including details on the electric power and transportation sectors.

How can Guam reduce reliance on diesel power?

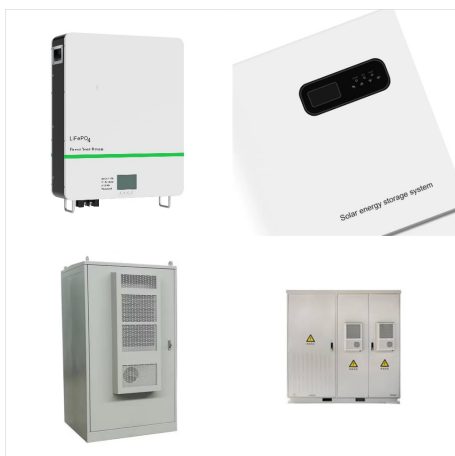
In addition to increasing the resilience of its power system, Guam is also seeking to increase utilization of renewable energy sources to reduce reliance on diesel powered generation.

What are the five major energy policies in Guam?

These include wholistic energy strategies; grid-tied and distributed renewable energy, energy efficiency and conservation, transportation; climate change and resilience; and equity, workforce, and environmental justice ((Guam Legislature n.d.; United Nations n.d.), unless otherwise noted). This list does not include military related policies.



The Guam Energy Office (GEO) was first established in 1974 by Public Law 12-101 requiring GEO to comply with the rules and regulations adopted by the Federal Energy low-flow aer-ators on faucets, and smoke detectors. Determination to qualify starts with total household income based on chart.



The Guam Power Authority's Clean Energy Master Plan (CEMP) is a comprehensive plan for transitioning Guam from legacy fossil fuel fired generation to renewable energy and non-greenhouse gas emissions electric energy supply. The Clean Energy Master Plan is a living document and is continuously being updated. to flow to disadvantaged



The Government of Guam agencies are also integrating energy efficiency and renewable energy into their portfolio. In 2012, GEO contracted Taniguchi, Ruth, Makio Architects to conduct energy audits for 15 agencies through funding from the American Recovery and Reinvestment Act of 2009 State Energy Program. These audited agencies were retrofitted for energy conservation ???



The definition of energy flow is the transfer of energy from the sun and up each subsequent level of the food chain in an environment. Each level of energy flow on the food chain in an ecosystem is designated by a trophic level, which refers to the position a certain organism or group of organisms occupies on the food chain. The start of the chain, which would be at the ???



Distribution, Sale, or Printing for other than personal use of the Guam Tropical Energy Code is not permitted without written permission from the Guam Building Code Council, ICC, and ASHREA. through a building component or assembly, equal to the time rate of ???



: Energy Management for Multi-energy Flow:  
Challenges and Prospects January 2016 Dianli  
Xitong Zidonghua/Automation of Electric Power  
Systems 40(15):1-8



6 ? Energy flow analysis is a valuable tool in vehicular development, offering significant advantages in the interpretation of control strategies, refinement of development processes, and enhancement of economic performance [8]. This mathematical analysis method is grounded in the theory of energy balance, focusing on the processes of energy generation, movement, and ???



Yes, the Guam Rail is an omnivore. It eats a variety of foods including insects, snails, fruits, seeds, and small vertebrates. Describe the flow of energy through a typical food chain (describing "what eats what"), including the original source ???



Reduce stress, open energy flow, shift fear, strengthen the immune system and develop internal resilience! In this video, Master Mingtong Gu will guide you to relax, connecting with your body's systems and especially your immune system, to generate healing peace, vitality, happiness, and oneness.





The Guam Tropical energy code was approved in 2013. Its purpose is to provide minimum design requirements to achieve energy efficiency in buildings constructed in Guam. through a building component or assembly, equal to the time rate of heat flow per unit area and the unit temperature difference between the warm side and cold side surfaces



The energy flow of ecosystem means the pathway energy takes to move from one organism to another in an ecosystem. The energy flow of an ecosystem is a fundamental concept of ecological studies. The direction of flow of energy in an ecosystem is unidirectional and is typically in the form of food energy that flows from one trophic level to another harnesses ???



Flow electrode capacitive deionization (FCDI) innovatively adopts activated carbon slurry as the flow electrode, which not only increases the adsorption capacity, but also eliminates the need for extra desorption process [11], [43], [44], [45] adjusting the operation mode of the flow electrode, the electrode can adsorb and desorb salt ions simultaneously, ???



Crystal Energy Infinite Guam. Metaphysical Supply Store in Dededo. Open today until 8:00 PM. Contact Us Call (671) Allow your energy flow.. and draw you toward what you need most. Read More. Gallery. Contact Us. Contact. Call now (671) ???



4. Optional: Install low-flow showerheads and faucet aerators in all applicable locations in the home. a. Faucet aerators (<2.2 GPM) ??? Low-Flow Devices SWS b. Showerhead (<2.5 GPM) - Low-Flow Devices SWS 5. Optional: Tier 2 Advanced Power Strip (APS) devices are primarily designed to address both passive and active



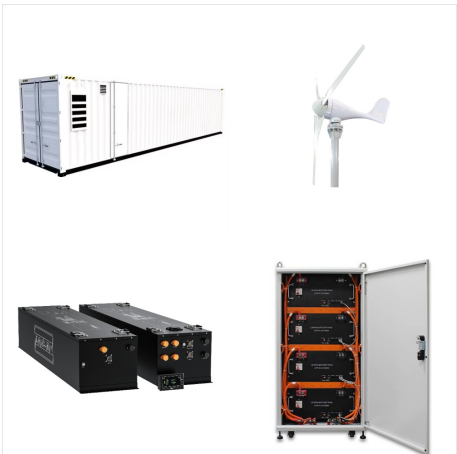
Section 2: Low-Flow Showerheads and Low-Flow Faucet Aerators Section 2.1 Low-Flow Showerheads Recommended materials: Fixed low-flow showerhead (hand-held showerheads, if applicable); thread tape, cloth Tools required: Plumbers wrench, scissors Standards: 1.75 gallon per minute (GPM) rate or less for showerhead at 80 pounds per square inch (PSI)



The Guam Energy Office is committed to promote energy efficiency and provide energy-saving solutions to assist with reducing fossil fuel dependency, to partner with low-flow aerators on faucets, and smoke detectors. Energy Outreach Session The Plug-In Electric Vehicle Rebate Program provides local funding for GEO to



The Guam Energy Office is a line agency within the Executive Branch of the Government of Guam. The Agency serves the general public by promoting energy efficiency to reduce reliance on imported low-flow faucet aerators and showerheads, refrigerators, window air conditioners, water heaters and mi-



Similarly, to explore inter-sectoral energy flows induced by provincial construction sectors, the energy flows have been integrated at the sectoral level: (12)  $w_{ic} = \sum_{r=1}^m p_{icr}k$  (13)  $w_{cj} = \sum_{l=1}^m p_{cjl}l$  where  $w_{ic}$  represents the energy flow from sector  $i$  to the construction sector in region  $k$ , and  $w_{cj}$  represents the



??? Guam Energy Task Force: Tom Ada, Heidi Ballendorf (GWA), Anthony Barcinas (USDA), Rudy  
 ??? Improvements in traffic flow Additionally, liquefied natural gas (LNG) is presented as a strategy for increasing Guam's energy supply diversification. The technology approach, technology details, strategy barriers, and time frame for each



Wei Gu: Supervision. Hai Lu: Data curation. Haifeng Qiu: Writing - review & editing. Shuai Lu: Validation. Dada Wang: Software. Developing an energy flow analysis method that can be widely applied to the analysis of the energy internet has become an important research field in the current research related to the energy internet [5,6]. Based



By investing in green technology, energy conservation, energy efficiency, renewable energy, efficient transportation, green building design and smart grid technologies, Guam is building a new energy infrastructure that reduces its ???





Nowadays, worldwide energy crisis and environmental pollution have accelerated the continuous evolution of the energy industry structure [1] cause the combined heat and power (CHP) unit can increase the energy efficiency by cascade utilization, it has been widely applied in practical engineering [2], [3] nsequently, the interactions between the electric ???