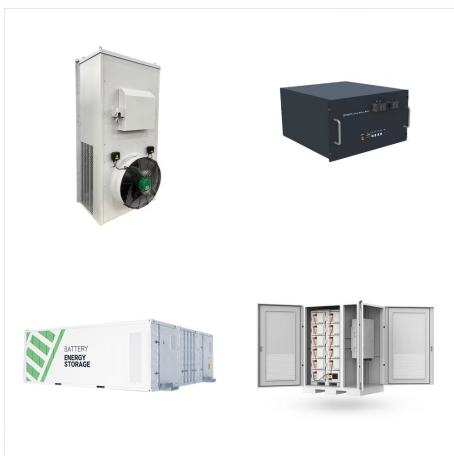




Enphase Solar Panel Microinverters are the industry's first grid-forming inverters eliminate battery sizing restriction. Get a quote now to get upto 25yr warranty. If a system with a central inverter fails, solar production will stop completely. With one microinverter per module, solar production keeps working even if a microinverter fails.

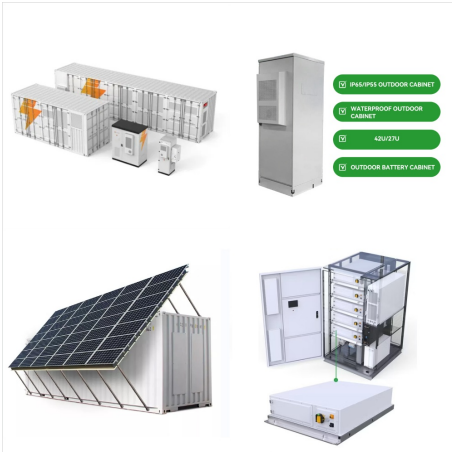


In comparing SolarEdge and Enphase inverters across various aspects, including performance, monitoring capabilities, safety and reliability, warranty and support, as well as awards and certifications. Check this table for a brief comparison between SolarEdge vs. Enphase at a glance. Parameter: SolarEdge: Enphase:



Choosing the right inverter for your solar system is just as important as choosing the right solar panels. Enphase and SolarEdge are both established players and are two of the top inverter brands. When Googling "Enphase vs SolarEdge", there are fans for both technologies, with each camp advocating their choice of technology is better.

ENPHASE INVERTER AGAINST SOLAR EDGE INVERTER



SolarEdge, rightly put, is a global leader in the solar inverter industry right now. They are currently ranked third globally after Huawei and Sungrow, a Chinese electronic company. Of course, it has taken them years of toiling and proving themselves to get to this point. 15 years to be precise of growth in technology and revenue.



Enphase, the world's leading solar power inverter manufacturer, With IQ Microinverters, each solar panel operates independently while string inverter systems limit their production to the weakest module. A bright idea, even in low light. If shadows or clouds pass overhead, IQ Microinverters use breakthrough Burst Mode technology to capture



Scalability - Enphase vs. SolarEdge. SolarEdge's scalability is limited in comparison to Enphase micro-inverters. SolarEdge systems are limited to the size of the central inverter, which can intake only a certain number of solar panels (for example an SE10000 can take up to 27 400W panels (in the Northeast). Enphase micro-inverters have higher flexibility to scale by simply adding solar ???

ENPHASE INVERTER AGAINSTS SOLAR EDGE INVERTER



Choosing the right solar inverter brand is crucial for Australian homeowners embarking on their solar journey. Two leading contenders, SolarEdge and Enphase, offer distinct technologies and features, making the selection process even more critical. This comprehensive analysis delves into the intricacies of both brands, providing you with the necessary information to make an ???



Solar inverter as a part of the home solar system. Photovoltaic (PV) solar panels absorb the sun's rays and convert their light into energy, which is produced in the form of DC electricity. However, the appliances in our homes run on AC power, so in order to use the power generated by the solar panel, you first need to convert it to AC.



The Difference In Price Between A Standard Solar Inverter, SolarEdge & Enphase. One of the main issues people face when going solar is working out how much to pay, so in true 1KOMMA5? fashion, let's lay it all out to help you get some firm price points for the various solar systems.

ENPHASE INVERTER AGAINSTS SOLAR EDGE INVERTER



SolarEdge inverters have a 99.5% efficiency, while the Enphase IQ 7 series inverters have a 97% efficiency. SolarEdge, therefore, has a slight edge over Enphase when it comes to efficiency. Choose a Solar Installer You Can Trust. Enphase and SolarEdge offer top-notch inverter solutions that have distinct features.



The main function of inverters are to convert the direct current (DC) into alternating current (AC), so all the appliances can use electricity. They are vital to the functionality of your solar system given the fact they have complex parts and software installed. Choosing panels and other materials are essential to choose the best type of inverter.



Just like Enphase, SolarEdge seeks to optimize solar installations so they produce more electricity than with a typical string inverter. Unlike Enphase's microinverters though, SolarEdge produces an entire inverter "system" that incorporates both a conventional string inverter installed on the side of the home as well as "power optimizers" placed under each solar ???

ENPHASE INVERTER AGAINST SOLAR EDGE INVERTER



There are four main components of an Enphase Microinverter System: Enphase Microinverters are installed beneath each solar module and convert DC power to AC power. Each microinverter sends AC power to your home's electrical panel (site load center) and transmits performance data over your home's electrical wiring to the Envoy.



I have a Solar edge inverter with 19 optimizers for going on 10 years (full 10 come April of 2025). I looked at Enphase 10 years ago but decided against them at the time for two reasons the extra cost and the fact that at the time Enphase was not profitable. What good is a 25 year warranty if the company is not around after five years.



Which Company Produces Better Quality Inverters? The Enphase vs. SolarEdge duel continues with questions over the quality of each company's products. Therefore, weighing the initial investment against potential long-term benefits is essential. Ultimately, conducting thorough research and consulting with professionals can help guide your

ENPHASE INVERTER AGAINSTS SOLAR EDGE INVERTER



Enphase microinverters have a pretty good and reliable track record, so that is the direction I would go personally if reliability is paramount. I would not go with Solar Edge, due to the recent failure rates. Tesla inverters have had some issues as well, but would usually be the cheaper solution. This is where I would go for the value proposition.



Solar Edge and Enphase are massive rival inverter companies in the solar industry that offer competing technologies of power optimizers and microinverters. Together these two inverter mammoths hold the majority of the world's inverter market share alone. This article provides an analysis of the capabilities of both these inverter brands for you to better comprehend



We have decided to install a solar panel system on our house and we have narrowed it down to three quotations: Quotation 1: Installer A SolarEdge SE3680H StoreEdge 10x 375W Longi LR4-60HPH375M 25yr warranty on inverter, 25/12 on the panel (performance/product ???4,888 Quotation 2: Installer B Huawei SUN2000 3.68 11x QCells ???

ENPHASE INVERTER AGAINST SOLAR EDGE INVERTER



Thus, to conclude, In terms of efficiency in Enphase Micro Inverters Vs SolarEdge, the Enphase Micro Inverters are a little better. 2. Durability. SolarEdge was the first solar inverter company to manufacture a solar panel optimizer to work parallelly with their solar inverter, thus allowing module-level monitoring and voltage regulation.



Many of these new inverters have only just become available, while the MIL Solar inverter is the only Australian-made string solar inverter. Provide your professional feedback here. Other inverter comparison charts: Hybrid Solar Inverters. 3-phase Hybrid Inverters. Off-grid multi-mode Inverters. 48V Off-grid rack-mount battery systems (New)



On the other hand, the Enphase inverter offers an equally remarkable efficiency rate of up to 97.5%, guaranteeing efficient power conversion. Output Power of Tesla Inverter vs Enphase Inverter: The Tesla inverter comes in various power options, including 3.8 kW, 7.6 kW, and 11.4 kW, allowing for greater flexibility in system design and

ENPHASE INVERTER AGAINSTS SOLAR EDGE INVERTER



In the case of SolarEdge and Enphase inverters, both are backed with extensive, long-term warranties. A SolarEdge string inverter is backed with a 12-year warranty. Depending on the model, you can extend that warranty by 8 or 13 years for an additional cost. The power optimizers are backed with a 25-year warranty.



Get the most out of your system with the perfect remote control ??? your Enphase app. Effortlessly manage your home energy, device settings, account information, and notifications from one screen. The best solar installers in the business are trained and certified to work with Enphase products.



The two major companies in the solar inverter industry are SolarEdge and Enphase. Collectively, they own 95% of the global inverter market share, with SolarEdge owning 40% of the U.S. market and Enphase holding 48%. In Enphase Vs. SolarEdge comparison, we have analyzed the inverters of both companies to make our customers aware of the

ENPHASE INVERTER AGAINST SOLAR EDGE INVERTER



Discover the key differences between Enphase and SolarEdge inverters and find out which one delivers superior performance for your solar energy system. Give us a call 800-674-9750. Locations. Las Vegas; Reno; North Las Vegas; SolarEdge's power optimizers provide better protection against partial shading, allowing for more reliable energy



Enphase Energy. i. Model # IQ7PLUS-72-E-US.
4.19 408 Reviews . Best unit price \$137 Installed
Best system price Installed 5kW system \$0 \$0.00
p/w. Compare local offers x Other current models of
SolarEdge inverters. P860 (for 2 x 72 cell modules)
More details