

Does the Enphase IQ8 work in off-grid mode?

One of the most commonly-asked questions about the Enphase battery is whether it can function in off-grid mode - and the answer is yes, it does. The Enphase IQ8 can be paired with a compatible off-grid micro-inverter to create a dependable source of power at all times.

Why should you choose Enphase Energy System for off-grid living?

Embrace the freedom of off-grid living with the power and reliability of the Enphase Energy System. Offering complete independence from utility infrastructure, our new Off-Grid configurations feature intelligent IQ8 Microinverters, state-of-the-art IQ Batteries, and integrated Generator Support.

Can the Enphase IQ8 be paired with an off-grid micro-inverter?

The Enphase IQ8 can be paired with a compatible off-grid micro-inverter to create a dependable source of power at all times. The Enphase IQ8 features the brand's "always-on" technology, aiming to eliminate the challenges of being tied to the utility grid.

What is Enphase IQ8?

The Enphase IQ8 features the brand's "always-on" technology, aiming to eliminate the challenges of being tied to the utility grid. With a traditional grid-tied system, you'll have zero solar power production even if the sun is shining if the grid fails.

Why is Enphase IQ8 grid-agnostic?

Enphase started talking about the development of the IQ8 as early as in 2017. The company aimed to create a device that would be always on, even without a costly backup battery. The existing microinverters do not function during a power outage, even in the middle of a cloudless day.

Can Enphase battery be used off-grid?

1. Can Enphase Battery Be Used Off Grid? Yes, the Enphase battery can function in off-grid mode when paired with a compatible off-grid micro-inverter, allowing for a reliable power source at all times. 2.

ENPHASE IQ8 OFF GRID SYSTEM

TÃ¼RKIYE



ATS is what forms microgrid i.e. system capable of generating power even during outages by making the system switch from on grid to off grid and vice versa . IQ8 has the capability to form microgrid during the outage which IQ7 doesn't.



As Pramod MJ (Moderator) pointed out some Enphase Energy System Configurations (scroll down) can operate temporarily in an off-grid and off-internet mode but inherently and most all of the time they are a grid and internet tied systems. Additionally, the IQ8 is but a single microinverter choice of many and in itself is not a system. So, If



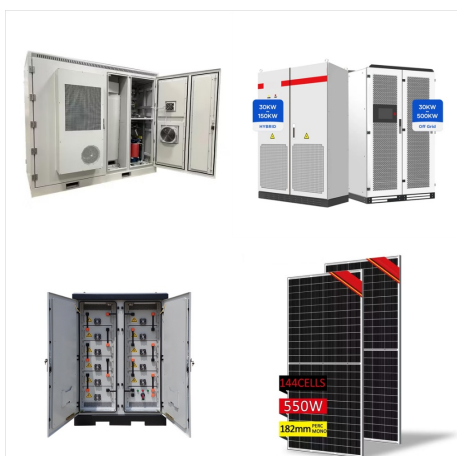
As Pramod MJ (Moderator) pointed out some Enphase Energy System Configurations (scroll down) can operate temporarily in an off-grid and off-internet mode but inherently and most all of the time they are a grid and internet tied ???

ENPHASE IQ8 OFF GRID SYSTEM

TÃ¼RKIYE



En r sum , Enphase IQ8 va vraiment r volutionner le monde du photovolta que. Il va vous permettre d'avoir de l' lectricit  en cas de coupure, m me sans syst me de stockage. Les micro-onduleurs classiques s'arr tent lors d'une panne de r seau; Enphase IQ8 est capable de fonctionner off grid (hors r seau)



IQ8 will function without batteries as grid tied inverter. With empower smart switch I can draw power from PV modules or when modules are not producing sufficient current, ie. evening or dark cloudy day?



En r sum , Enphase IQ8 va vraiment r volutionner le monde du photovolta que. Il va vous permettre d'avoir de l' lectricit  en cas de coupure, m me sans syst me de stockage. Les micro-onduleurs classiques s'arr tent ???

ENPHASE IQ8 OFF GRID SYSTEM

TÃ¼RKIYE



However, Please note that Enphase Energy recommends IQ8+ microinverters to be used as a backup for a on grid system and not a complete off grid system, the system comissioning needs to be done using grid power. However initation can be done using a generator/grid power(most preferable if available) for the scenario provided.



The Enphase energy system will work off-grid when the sun is shining but have its power fluctuate with cloud cover and in the early morning or late afternoon. An Encharge battery would help buffer those fluctuations. Depending on PV and battery sizing versus load, the home can operate in an off-grid mode more of the time.



If your application is grid tied AND internet connected, you want utility arbitrage, to be a prosumer and survive the occasional grid failure with simultaneous PV, battery and generator operation then Enphase is for you. If your application is off-grid and off network look to a dedicated off-grid and off-network solution with batteries

ENPHASE IQ8 OFF GRID SYSTEM

TÃ¼RKIYE



Looking for an off-grid system, thought that should be possible with IQ8 and battery storage, but the documentation seems vague. If I use the System Builder to try a setup with "System Builder" under "Installers": <https://enphase.com/installers/systems>



grid-tied PV system design guide . television reception, which can be determined by turning the equipment off and on, you are Enphase IQ8 Commercial Microinverters require the QD Cable and are NOT compatible with previous Enphase cabling (that is, IQ Cables). A three-phase IQ Gateway Commercial 2 is



Enphase doesn't recommend mixing IQ6/7 micros with IQ8's. The IQ8's can run in offered mode. I am currently running Sunlight Backup with no storage, and if the grid goes down during the day with ambient light, my 3 branch circuits of IQ8+ microinverters will power my home's critical circuits subpanel; I have (2) Enphase load controllers and a critical circuits subpanel, as well as a ???

ENPHASE IQ8 OFF GRID SYSTEM

TÃ¼RKIYE



Enphase Off-Grid Capabilities. One of the most commonly-asked questions about the Enphase battery is whether it can function in off-grid mode ??? and the answer is yes, it does. The Enphase IQ8 can be paired with a compatible off-grid micro-inverter to create a dependable source of power at all times.



IQ System Controller 2 of 3: Gebruik een IQ System Controller 2 of 3 om het volledige off-grid systeem te beheren en te monitoren. Deze geavanceerde controllers zorgen voor een naadloze samenwerking tussen de zonnepanelen, micro-omvormers, batterijen, load controllers en de Communications Kit, waardoor je maximale controle en efficiëntie hebt.



Enphase Off-Grid Capabilities. One of the most commonly-asked questions about the Enphase battery is whether it can function in off-grid mode ??? and the answer is yes, it does. The Enphase IQ8 can be paired with a ???

ENPHASE IQ8 OFF GRID SYSTEM

TÃ¼RKIYE



The Enphase Energy System, with IQ8 Series Microinverters, enables many configurations for different customer needs. The system supports four use cases that are described as the system will be able to sustain off-grid operation for extended periods. This use case supports whole home backup i.e., backing up all the loads in the home.

Note



<p>I am looking at a very large system. If I have no battery, and full sun situation, how much power can I use if I have a 67 panel (440W each) system, presuming the grid is down, and sun is full? Am I restricted to a 2x10A SP subpanel? If this is true, I am sorely disappointed, and I may need to reconsider moving forward. I need to be able to use more of the potential of my ???



??? All new standalone or off-grid systems must install an AC standby generator to support the system when needed. ??? All new standalone or off-grid systems must use IQ8 Series Microinverters to facilitate Sunlight

ENPHASE IQ8 OFF GRID SYSTEM TÃ¼RKIYE



A smart, go-anywhere energy system to power your essentials at home, work, or play. The IQ PowerPack 1500 is your rugged, weatherproof companion during power outages or adventures off the grid. Pre-order today. Shipping starts December 20, 2024.



IQ8 will function without batteries as grid tied inverter. With empower smart switch I can draw power from PV modules or when modules are not producing sufficient current, ie. evening or ???