



This project utilizes used LEAF batteries to help offset the building's power consumption, contributing to Nissan's ambitious goal of achieving carbon neutrality by 2050. Key Highlights: The BESS project is expected to reduce CO2 emissions by 3.7 tons annually .

EV POWER SYSTEM LIGHT NISSAN LEAF



Electronic parking brake system warning light (yellow) Electric shift control system warning light; Electric Vehicle (EV) system warning light; Low tire pressure warning light; Master warning light (red/yellow) Power steering warning light; Rear Automatic Braking (RAB) warning light; Seat belt warning light; Supplemental airbag warning light



I last drove my 2022 Nissan Leaf SV Plus (currently 2215 miles) on Monday 1/31/22 with no issues. Probably had about 50% charge on the 62 kWh battery. Last night on 2/3/22, got in the car and showed all the warning signs. The main screen said "Service EV System - No Power" and where it listed battery charge percent and range estimate it said



My Leaf displayed Warning Service EV System, Warning Service EV System Unable to restart after power off. tonight. Battery is 100% charged according to the dash display but the Battery symbol at the top right side of the dash is illuminated as are the warning lights for front and rear hazards. The vehicle is a 2021 Leaf S Plus.

EV POWER SYSTEM LIGHT NISSAN LEAF



LEAF; EV BATTERY WARNING LIGHT ON AND
DTC B2902-42 STORED APPLIED VEHICLES:
2018-2019 LEAF (ZE1) APPLIED VIN: Vehicles
built before 1N4AZ1(*)*)(*)KC306826 APPLIED
DATE: Vehicles built before January 8, 2019
APPLIED SYSTEM: Vehicles equipped with a 40
kWh lithium-ion battery IF YOU CONFIRM The EV
Battery warning light is ON AND



Performance of recommended maintenance is a
condition of the new vehicle warranty for the
second-generation Nissan LEAF, and must be
conducted by a Nissan certified EV technician. For
more information, please speak to your local Nissan
EV dealer or call 1800 035 035 during regular
trading hours (AEST). Lithium-Ion Battery
Maintenance

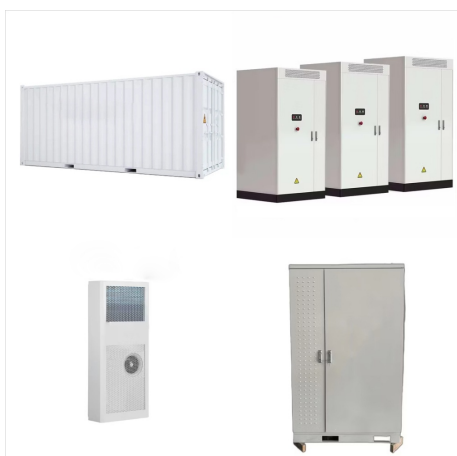


Warning description "7. EV System warning light" as
per 2013 LEAF Manual page # EV-28. I see the
other warning and errors when I start the car (do not
remember exactly). But, all errors and warning go
away when I power down the car and restart it. This
problem only happens when I use public charger @
Mayer Electric and whole foods.

EV POWER SYSTEM LIGHT NISSAN LEAF



The owner's manual lists 6 things that could cause the EV System warning light to come on. The possible causes are: Traction motor and inverter system, Charge port or onboard charger, Lithium battery system, Cooling system, Shift control system and Emergency shutoff system is activated, but that isn't specific enough to be helpful.

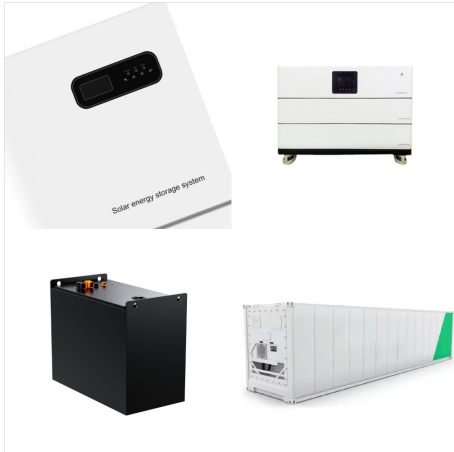


At some times it seemed erratic in how the SOC would decrease while driving. Toward the end of the trip I got the turtle mode symbol for no apparent reason. This afternoon, I got turtle mode again, the EV system warning light, and then "Motor Power is being limited, Service is required. Please consult your dealer".



My 2018 leaf won't go in drive or reverse, it says service ev system no power and service 12v system I have replaced the 12 battery with a new one, charged it up also, I can't get leaf spy to clear the codes have disconnected the traction battery and the 12 v battery, put a 12 v light bulb across the battery terminal after disconnecting it, tried to clear codes with a innova ???

EV POWER SYSTEM LIGHT NISSAN LEAF



When your Nissan Leaf displays the error message "Service EV System ??? No Power" on your dashboard, it indicates that there's an issue with the vehicle's electrical system. This warning message should be taken seriously, ???



Browse the manual to learn all about your 2023 Nissan LEAF. Learn about [ev settings]. Browse the manual to learn all about your 2023 Nissan LEAF. Electric power steering warning light. 6.4.2.6. Electric shift control system warning light 6.4.2.9. Electric vehicle system warning light. 6.4.2.10. Intelligent Emergency Braking (IEB)



Yes - IF they accept there's a fault - so take it there under 30% charge - the car in the link, they said for 8 months on multiple visits "no fault found" - until it just passed 160,000kms (100,000miles) then magically "your battery is u/s"

EV POWER SYSTEM LIGHT NISSAN LEAF



I have experienced a issue "service EV system, power reduced stop safely", "no power, stop safely", "service EV system, no power" for 4 times in the past 3 months. The car basically wouldn't start. 1st time: local Nissan Torrance dealer cleared the code and it drove again 2nd time: replaced the 12V battery and it drove again



Thanks, The fault, "Service ev system unable to restart after power off". R.A.C. attended, turns out the 12 volt battery was low on power, half an hour with a booster pack attached and away we were. I guess it all still needs checking out, as to ???



hi All, saw few threads here abt users getting EV system warning light. I have my leaf for just 3 weeks. brand new 2013 SV with QC. First time ever tried to charge on 240 (have been charging on QC 440 or trickle charge at home) and got the EV system warning light. (Exclamation in car orange

EV POWER SYSTEM LIGHT NISSAN LEAF



A funny thing happened to me on the way to the supermarket last night ! I set off from home, drove around 200 yards then the warning message reported by timbolovett in thread 2018 Leaf 2.0 "Service EV System. Unable to restart after power off" - My Nissan Leaf Forum popped up. Bizarrely, in spite of this "terrible fault" I was allowed to keep driving the car ???



So this issue is not unique to older LEAF. I just purchased a brand new Nissan Leaf SL Plus 2019 for the extended range. 5 days in and parked in the garage, 89 miles and have not plugged it in for charge even once; I now have the same message as others here "Service EV System Unable to restart after power off".



A combination of the Leaf not being designed well to give an exact diagnostic code of the failure and technicians not being familiar with the Leaf usually results in them swapping far more parts than is actually needed. Enjoy the fact that it's under warranty--they're going to have to pay for all the perfectly good parts they swap out.

EV POWER SYSTEM LIGHT NISSAN LEAF



Browse the manual to learn all about your 2023 Nissan LEAF. If the warning appears, contact a knowledgeable LEAF repairer such as a NISSAN certified electric vehicle dealer. Parent topic: Indicators for operation. Owners Manual. 1. Foreword. 1.1. Electric vehicle system warning light. 6.4.2.10. Intelligent Emergency Braking (IEB) system



Power limiter light Yellow Turtle. Mechanic's Assistant: What is the make/model/year of your car? Nissan leaf 2015. Mechanic's Assistant: Are you fixing your Leaf yourself? What have you tried so far? No. Mechanic's Assistant: Anything else you want the Mechanic to know before I connect you? EV system light also comes on



The main screen said "Service EV System - No Power" and where it listed battery charge percent and range estimate it said "- - -". The accessories of internal lights, etc, all worked, but the car would not turn on.

EV POWER SYSTEM LIGHT NISSAN LEAF



It gave me a message - service ev system no power. There's a lot of lights on. I drove it yesterday and this morning it - Answered by a verified Nissan Mechanic But now EV warning light indicator came and stays on. Is it safe to drive small distances like 20 km range. Hi, my husband drove 2016 Nissan Leaf EV until it ran out of power



I had a worrisome experience, out shopping and making a stop on a 10F day. When I came out from the hardware store (having stopped perhaps 5 minutes), and pushed the button, I was told to put on the brake and not to drive. The EV System warning light and the 12 volt warning lights both were on. I tried repeatedly to start it, no luck.



Power from the charging device to the Leaf has been interrupted. Specific systems, such as the climate control timer, remote climate control, or the battery preconditioning (warming) cycle, are active. If you restore charging power, the beep indicator won't sound, and the flashing should cease. Blue Light Flashing

EV POWER SYSTEM LIGHT NISSAN LEAF



If you have not please join our official My Nissan Leaf Facebook Group! Nissan Leaf Facebook Group. Nissan Leaf Ownership. Nissan Leaf 2018 ZE1 service ev system no power in red. Thread starter oddmar; Start date Jun 20, EV System Warning Light. DunanyDon; Aug 25, 2024; Problems / Troubleshooting; Replies 1 Views 537. Aug 25, 2024



After almost 4 years of trouble free EV driving, the EV system warning light went on today in my 2011 Leaf. Using Leaf Spy, I read the DTC codes. It contains "P31EB 00C0 EV/HEV Water Pump 2 EVC-319". A simple reset (disconnecting the 12V battery for 10 minutes) only caused it to go away



Leaf with 38,950 miles. My EV System Warning Light appeared this morning. I immediately checked the 12vdc battery; a new one was installed at AutoZone a couple months back. That battery shows full charge and a separate VDC meter indicated 13.75 volts with no load.