

What is a 500W+ vertex module?

Subject to change. Trinasolar Vertex Brochure 2020_03_Rev03_EN. The 500W+Vertex series modules, with a module conversion efficiency reaching 21%, boast a power output over 500W. Incorporating 210mm cells, the 500W+Vertex series modules come in two versions - the bifacial double-glass modules and back sheet modules, delivering high customer value.

Why should you choose a 500W+ vertex Solar System?

with virtually any mainstream solar system design. Multi-busbar, with the capability to increase light absorption, perfectly matches the large-area cell. Technology integration enables the 500W+ Vertex modules to achieve higher power and power generation capacity per watt.

What is a 500W+ vertex module?

The 500W+Vertex module employs cells based on 210mm silicon wafers, which is the largest possible wafer size provided by the semiconductor industry and brings the highest power output.

What is the 600W+ photovoltaic open innovation Ecological Alliance?

The 600W+Photovoltaic Open Innovation Ecological Alliance was announced on 14 July - a formation of 39 firms that aims to create a new collaborative and innovative ecosystem through open collaboration, synergizing the main resources of the industry chain and integrating core processes such as R&D, manufacturing and applications.

How many PV modules are in the LONGi Hi-MO 5 Series?

There are five different PV modules in the LONGi Hi-MO 5 series, varying in nominal power rate from 530 W up to 550 W.

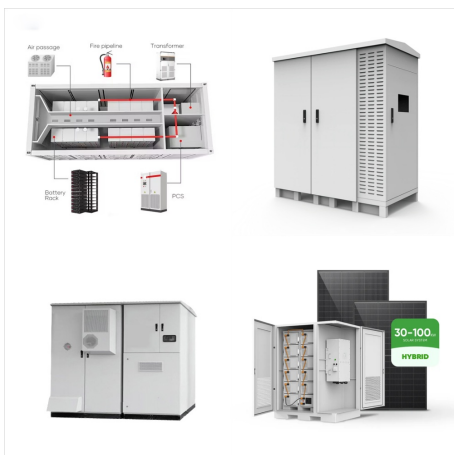
Are 500W+ vertex modules compatible with Nclave trackers & inverters?

The 500W+Vertex modules are verified and confirmed to be compatible with mainstream inverters and tracking systems. The TrinaPro 2.0 solution integrates 500W+vertex modules and customized Nclave trackers with especially designed driver unit, which will give full play to the Vertex modules and ensure the safety and reliability of the system.

EXCELLENT PERFORMANCE MONO PHOTOVOLTAIC MODULES 500



different PV module technologies (mono-Si, poly-Si, and a-Si) at Arizona State University, which has hot-arid climatic conditions. The authors found that the max power decreases by 0.4% to 0.5% per



Mono-crystalline Silicon Solar PV Modules
ASM-7-PERC-AAA (AAA=335-350) | 72 Cells |
335-350 Wp 7 % higher power output compared to
industry average performance at NOCT, PTC
ratings Excellent performance at low light irradiation
(200W/m²) LIR treated cells with least LID effect
PID, salt mist and Ammonia resistant Triple EL
checking to



On May 11, 2022, Phono Solar appeared with high-performance photovoltaic modules on Intersolar Europe in Munich, Germany. The exhibition is the largest and most influential solar industry

EXCELLENT PERFORMANCE MONO PHOTOVOLTAIC MODULES 500



Another study in the USA was conducted by Reis et al. 23 to measure the performance of mono-crystalline PV modules exposed to a cold marine environment over 11 years of employment. The authors



Mono-Crystalline PV Module; features. Publicly Traded Taiwanese Company. Formed as the merger of four Cell and Module Manufacturers in 2018. All four founding companies (Neo Solar Power, Gintech, Solartech, NDF) were in existence since 2008 or earlier. Excellent Performance in Low Light and Poor Weather Conditions to Maximize Energy Harvest;



A traditional mono c-Si panel has a 19.55% efficiency, but this efficiency increases by 0.86% to achieve 20.41% for mono PERC solar panels. Mono PERC solar panels tend to have a relatively higher price, but considering the performance and technical specifications against the price, this technology is much better than poly PERC solar panels.

EXCELLENT PERFORMANCE MONO PHOTOVOLTAIC MODULES 500



SOLAR PV MODULE (DCR/NON-DCR) 144 HALF CUT MONO PERC CELL BIFACIAL
TRANSPARENT BACKSHEET 525-555 W
Excellent Anti-PID performance guarantee via optimized mass-production process and materials control
500 600 0 10 20 30 40 50 60 Voltage [V]
550.1W 433.7W 319.2W 207.1W 98.6W

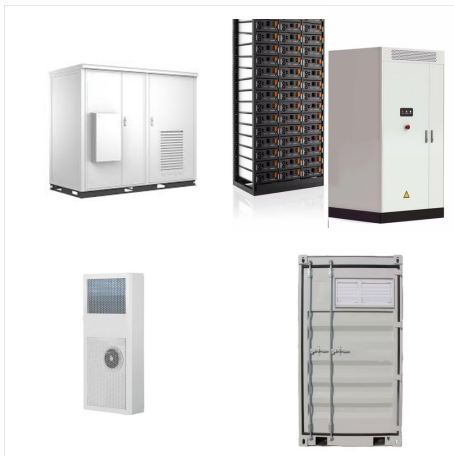


The Longi 500W 66 CELL Solar Panel offers excellent performance with up to 21.3% efficiency. Ideal for roof-top off-grid applications, Longi solar panels also feature lower resistive loss with lower operating current, higher energy yields ???

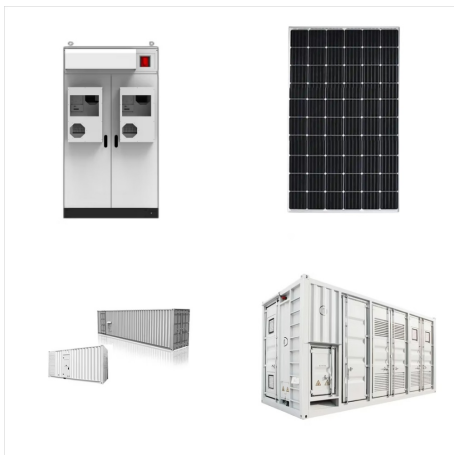


-550W Hot sale Bifacial Double Glass mono solar panels 182 MBB half cells. CETCSOLAR bifacial 480-505W half 132pcs Double Glass Bifacial panel power photovoltaic module. can provide customers with expert solar panels and solar systems, which have reasonable structure, excellent performance, stable quality, and long-lasting

EXCELLENT PERFORMANCE MONO PHOTOVOLTAIC MODULES 500



PV MODULES. About Our Module Excellent reliability, environment aging. Excellent insulation performance . IP67 Junction box & Connector. All MODULES. All Poly Mono Diversified Title SK6610M. Cell Qty 60 cells. Power(wp) 280/285/290. Frame



Series 6 with panels powered with 156 advanced M6 cells offer 500+ Wp of power output and lower project costs. Boost your saving and commitment to the environment. EXCELLENT LOW LIGHT PERFORMANCE. Be it early morning, cloud or dusk, the monofacial modules perform even at low light conditions, due to the use of Mono-PERC cell technology

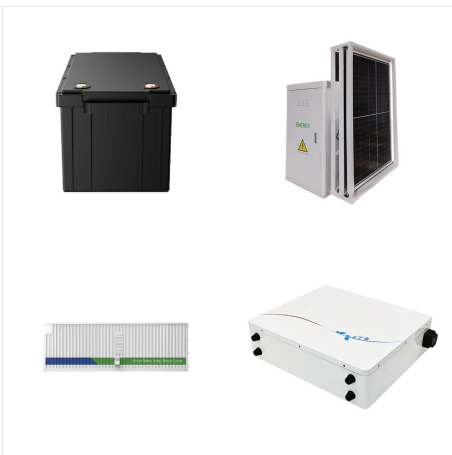


The present work discusses the performance of monocrystalline and polycrystalline Si solar PV modules in Raipur, Chhattisgarh, which is located in the east-central part of India. There is no study related to the SPV field in these areas and location-specific research is required to get a realistic assessment of the energy-producing potential of

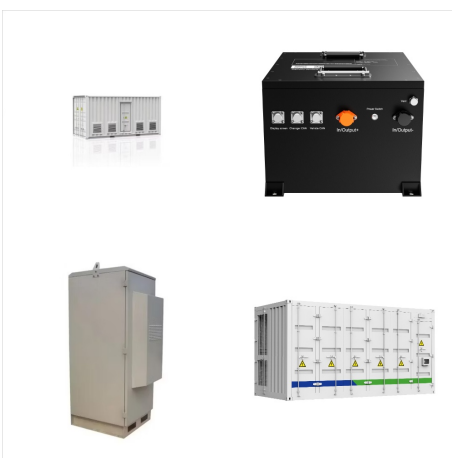
EXCELLENT PERFORMANCE MONO PHOTOVOLTAIC MODULES 500



Our path-breaking photovoltaic modules have provided valuable and sustainable 108 CUT CELL MONO-FACIAL MODULE Cable Length 500 mm 35 1720 ? 2 1092 Distance of mounting Oblong holes 1134 ? 2 ??? Excellent Low-light Performance ??? Higher Power Output Positive power tolerance +5W 45000.



Solar energy is converted into electricity through photovoltaic modules, and today the most popular types of solar panels are Mono Crystalline Silicon solar cell and Poly Crystalline Silicon solar



mono-module, 35 curves from monocrystalline module, and 40 curves from polycrystalline Predicted IV curves for the six PV modules at 500 W/m² and 310 K T c. the performance of the PV

EXCELLENT PERFORMANCE MONO PHOTOVOLTAIC MODULES 500



INTRODUCTION PV module performance is typically rated using a single operating point at standard test conditions (STC) as per the IEC 61215 standard, consisting of a 1000 W/m² irradiance, 25°C module temperature and AM1.5 (Air Mass of 1.5) spectrum [1]. (>500 W/m²). It was further observed and concluded that the conversion efficiency



Solar Cells Mono PERC Crystalline - M10 (144 pcs Half Cut) Cell Encapsulation EVA - Ethylene Vinyl Acetate Backsheet Composite Film Frame Anodized Aluminium Alloy Mechanical Load Strength 5400 Pa (Snow Load), 2400 Pa (Wind Load) Module dimensions: 2mm Dimension of PV Module Unit: mm 400 / 15.75 1100 / 43.30 1090 / 42.91 1133 / 44.60



The monocrystalline halfcut PV (photovoltaic) modules feature high efficiency low LID (light-induced- degradation) Mono PERC (passivated emitter rear cell) technology and provide excellent performance under low temperature or low light environment. The modules provide high power output at high levels of reliability. Features. Proven Energy Yield

EXCELLENT PERFORMANCE MONO PHOTOVOLTAIC MODULES 500



In this article, the effect of temperature on the photovoltaic parameters of mono-crystalline silicon Photovoltaic Panel is undertaken, using the Matlab environment with varying module temperature



Excellent Anti-PID performance guarantee via optimized mass-production process and materials control

500	600	0	10	20	30	40	50	60
Voltage [V]	550.1W	433.7W	319.2W	207.1W	98.6W	Incident Irrad. =1000W/m ²	SOLAR PV MODULE 144 HALF CUT MONO PERC CELL	



Evo 5 Series 144 Half Cells 535W 540W 545W 550 Wp 555 Watt Solar PV Panels TOPCon Commercial Monocrystalline MBB Bifacial Double Side Glass Photovoltaic Solar Panel Module Based on 182mm Solar Cell Full Black Solar Panel 400W 405 Wp 410 Watt Mono PERC PV Module. With its advanced features and reliable performance, it is an excellent

EXCELLENT PERFORMANCE MONO PHOTOVOLTAIC MODULES 500



Emmvee Solar Photovoltaic Modules are the best for On-Grid solar power plants. Our modules are built to 144 MONO PERC SOLAR CUT CELLS 158.75 x 79.375 mm(5BB) Excellent performance under weak light conditions MULTI CRYSTALLINE 60 & 72 CELL Highly resistant to salt mist, ammonia,



Ghana Fill factor Crystalline silicon Defects a b s t r a c t Data on long-term performance and degradation of field-aged solar photovoltaic modules is widely recognized as necessary for continued



Topsun's Crystalline Photovoltaic Modules are manufactured under Integrated Management System (ISO 9K: ISO 14K: BS 45K) for quality and safety environment. Excellent Module Efficiency of up to 17.49%; Micro cracks free ??? 100% Pre & Post Lamination inspection Enquiry about Mono Module. Name* Email* Phone* Address* Subject. Message

EXCELLENT PERFORMANCE MONO PHOTOVOLTAIC MODULES 500



SOLAR PV MODULE (DCR/NON-DCR) 108 HALF CUT MONO PERC CELL 520-550 W BIFACIAL DUAL GLASS TRANSITION TO A BRIGHTER TOMORROW ??? High Module Quality Ensures Long-Term Reliability ??? Based on G12-210mm wafer, best choice for ultra-large power plant ??? Advanced module technology delivers superior module efficiency ??? G12 Gallium ???



Please contact our office to confirm stock availability & ETA's JA Solar is a leading manufacturer of high-performance photovoltaic (PV) cells and modules. Their products are renowned for their excellent efficiency, reliability, and durability. The company uses advanced technology and automated production



Gujarat-based Goldi Solar has introduced the HELOC Pro series of mono PERC solar modules built with made-in-India PV cells. The modules are available in mono facial and bifacial variants with a power output ranging from 520 Wp to 550 Wp. design ensures excellent performance in low-light environments and reduces hotspot losses, said the

EXCELLENT PERFORMANCE MONO PHOTOVOLTAIC MODULES 500



Monocrystalline solar panels, known as mono panels, are a highly popular choice for capturing solar energy, particularly for residential photovoltaic (PV) systems. With their sleek, black appearance and high sunlight conversion efficiency, monocrystalline panels are the most common type of rooftop solar panel on the market.. Monocrystalline solar panels deliver ???