

Where can I contact the Falkland Islands government office?

For contacting the Falkland Islands government office, you can write to Falkland House, 14 Broadway, Westminster, London, SW1H 0BH. For Falkland Islands Representative inquiries, contact representative@falklands.gov.fk. For Airbridge flight information, contact travel@falklands.gov.fk.

Where can I find a plan for the Falkland Islands?

FIG and c/o Glenn figure as the applicant. The plans and details can be viewed at the Planning Office, Secretariat, Stanley and on the Falkland Islands Government Planning & Building Services Facebook page. Anyone wishing to comment on these applications must do so in writing, to the Planning Officer, by 2 February 2024.

Does the Falklands need a new wind farm?

But the Falklands feel it is not enough and besides the current wind farm is reaching its renewal date. No wonder then that notice has been given of the planning applications submitted for the Farm Expansion of Sand Bay Wind Farm to include 3 by E70 Enercon wind energy converters and battery storage. FIG and c/o Glenn figure as the applicant.

Can I drive an electric vehicle in the Falklands?

eLink are working on transport solutions for other sectors including off-road 4x4, commercial vehicles, and other specialist custom vehicles. We are able to supply EVs landed in the Falklands at an unrivalled value, no matter the brand or model. If you are interested in driving electric, get in touch.



The Falkland Islands Government is proud to launch its flagship Environment Strategy 2021 - 2040, which recognises the central and universal role that the natural environment plays in the sustainable development of our health and wellbeing, our economy and our nation as a whole. Key recommendations from the fin-fish review have been



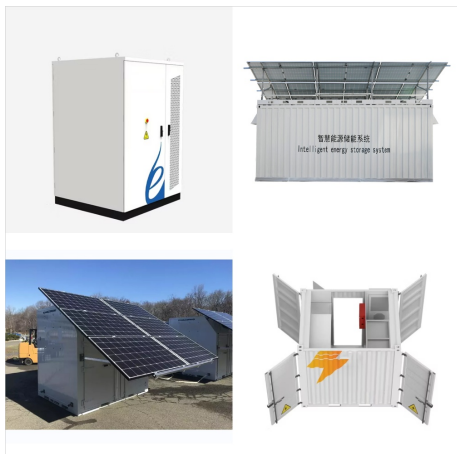
The solar day over the course of October 2024.
From bottom to top, the black lines are the previous solar midnight, sunrise, solar noon, sunset, and the next solar midnight. The day, twilights (civil, nautical, and astronomical), and night are ???



A wet day is one with at least 0.04 inches of liquid or liquid-equivalent precipitation. The chance of wet days in Falkland Islands varies throughout the year. The wetter season lasts 5.2 months, from November 20 to April 27, with a greater than 27% chance of a given day being a wet day. The month with the most wet days in Falkland Islands is March, with an average of 9.7 days with at ???



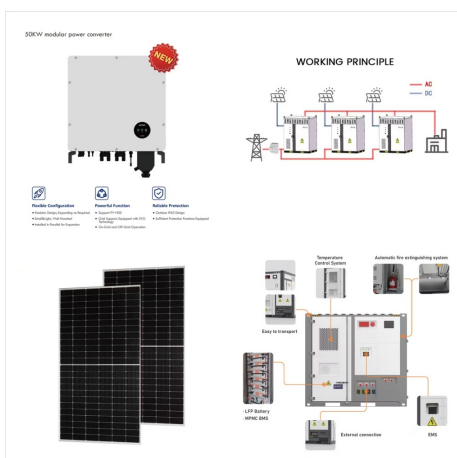
Welcome to the Falkland Islands. We are a vibrant and diverse island community with a long history and unique culture. We continue to prosper due to the pioneering efforts of our people for over nine generations. <https://customs.g.gov.fk/> Address: 3 H Jones Road, Stanley, Falkland Islands FIQQ 1ZZ.



Over the course of May in Falkland Islands, the length of the day is rapidly decreasing on the start to the end of the month, the length of the day decreases by 1 hour, 22 minutes, implying an average daily decrease of 2 minutes, 45 seconds, and weekly decrease of 19 minutes, 15 seconds.. The shortest day of the month is May 31, with 8 hours, 6 minutes of daylight and the ???



In Falkland Islands during March average daily high temperatures decrease from 54°F to 50°F and the fraction of time spent overcast or mostly cloudy increases from 54% to 60%. The average daily incident shortwave solar energy in Falkland Islands is rapidly decreasing during March, falling by 1.8 kWh, from 4.3 kWh to 2.6 kWh,



A wet day is one with at least 0.04 inches of liquid or liquid-equivalent precipitation. The chance of wet days in Falkland Islands varies throughout the year. The wetter season lasts 5.2 months, from November 20 to April 27, with a greater than 27% chance of a given day being a wet day. The month with the most wet days in Falkland Islands is March, ???



Over the course of April in Falkland Islands, the length of the day is rapidly decreasing om the start to the end of the month, the length of the day decreases by 1 hour, 49 minutes, implying an average daily decrease of 3 minutes, 45 seconds, and weekly decrease of 26 minutes, 13 seconds.. The shortest day of the month is April 30, with 9 hours, 32 minutes of daylight and ???



Falkland Islands Government Taxation Office Tax Return for the Year Ended 31 December 2021 This Tax Return is a formal notice that requires you by law to submit a tax return to the Falkland Islands Government Taxation Office (FIGTO) for the year from 1 January 2021 to 31 December 2021. Use this form to give details of all



The Falkland Islands Government Office in London is the representative office of the British Overseas Territory of the Falkland Islands in the United Kingdom, also referred to as Falkland House. [1] It was opened in 1983, one year after the Falklands War. [2] References



Over the course of December in Falkland Islands, the length of the day is gradually increasing om the start to the end of the month, the length of the day increases by 16 minutes, implying an average daily increase of 31 seconds, and weekly increase of 3 minutes, 39 seconds.. The shortest day of the month is December 1, with 16 hours, 20 minutes of daylight and the ???



THORNTON, Colo., Dec. 03, 2023 (GLOBE NEWSWIRE) -- Ascent Solar Technologies, (Nasdaq: ASTI) ("ASTI" or the "Company"), the leading U.S. innovator in the design and manufacture of featherweight, flexible, and durable CIGS thin-film photovoltaic (PV) solutions, announced today that the Company is pursuing several opportunities for federal funding through the Department ???



The average daily incident shortwave solar energy in Falkland Islands is rapidly decreasing during the summer, falling by 1.8 kWh, from 6.2 kWh to 4.4 kWh, over the course of the season. The highest average daily incident shortwave solar energy during the summer is ???

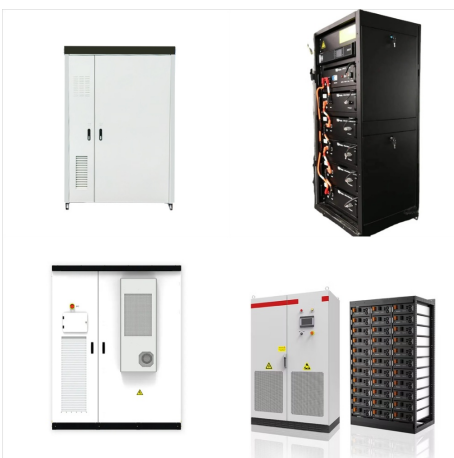
FALKLAND ISLANDS SOLAR OFFICE



Falkland Islands Office, Stanley, Falkland Islands
Position Lat. 51°40'0"S, Long. 59°51'0"W. About;
People; News; Most of the BAS staff travelling to
and from Antarctica transit through Stanley each
Antarctic summer ??? more than 500 ???



Falkland Islands Office, Stanley, Falkland Islands
Position Lat. 51°40'0"S, Long. 59°51'0"W. About;
People; News; Most of the BAS staff travelling to
and from Antarctica transit through Stanley each
Antarctic summer ??? more than 500 personnel
each year. In addition, all Antarctic mail and the
majority of freight transits through the Falkland



February Weather at Port Stanley Airport Falkland
Islands. Daily high temperatures are around 55°F,
rarely falling below 50°F or exceeding 61°F.. Daily
low temperatures are around 47°F, rarely falling
below 42°F or exceeding 51°F.. For reference, on
January 17, the hottest day of the year,
temperatures at Port Stanley Airport typically range
from 47°F to 56°F, while on July 17, the



Over the course of November in Falkland Islands, the length of the day is rapidly increasing om the start to the end of the month, the length of the day increases by 1 hour, 30 minutes, implying an average daily increase of 3 minutes, 6 seconds, and weekly increase of 21 minutes, 43 seconds.. The shortest day of the month is November 1, with 14 hours, 48 minutes of daylight ???



Falkland Islands Government Taxation Office.
Home; Employers . Employer Information; New Business; POAT; Minimum Wage. 2025 Employers Guide to Minimum Wage; 2025 Workers Guide to Minimum Wage; 2024 Employers Guide to Minimum Wage; 2024 Workers Guide to Minimum Wage; 2023 Employers Guide to Minimum Wage;



Falkland Islands: Many of us want an overview of how much energy our country consumes, where it comes from, and if we're making progress on decarbonizing our energy mix. Renewable energy here is the sum of hydropower, wind, solar, geothermal, modern biomass and wave and tidal energy. Traditional biomass ??? the burning of charcoal, crop



STANLEY POST OFFICE & PHILATELIC BUREAU
NORMAL OPENING TIMES: 08:00 - 17:00 HOURS
(Monday to Friday) Want to know more? Home;
About; Contact us; Delivery policy Sitemap; Contact
us. Falklands Post Service Limited. Post Office.
Town Hall. Stanley. FIQQ 1ZZ. Falkland Islands
+500 27159; philatelic@falklandspost .fk; Our social
profiles



February Weather in Stanley Falkland Islands. Daily
high temperatures are around 55°F, rarely falling
below 49°F or exceeding 61°F.. Daily low
temperatures are around 47°F, rarely falling below
42°F or exceeding 51°F.. For reference, on January
17, the hottest day of the year, temperatures in
Stanley typically range from 47°F to 56°F, while on
July 17, the coldest day of ???



A set of remote South Atlantic islands, the Falkland
Islands, peek through the clouds as the space
station orbits 270 miles above Earth off the coast of
South America. The Russian segment of the station
can be seen to the right, while a pair of solar arrays
are partially shown on the left.



During 20 years of operation, Morrison Falkland and the Falkland Islands Government operated through a collaborative contract culture governed by a partnership agreement. The new business is now trading as RSK Falkland Islands Limited. The main office is located in Stanley, the capital of the Falkland Islands.



Power and Electrical Section Power Station. We have been in existence since September 1929 when the first power station was opened on Ross Road. This power station had a single 10kW generator and supplied power to just the police station, the Town Hall and police cottages.