



Power adapter compatible with Famicom, FDS, NES, Super Famicom, Sega Master System, Genesis 1, Sega CD 1 and 2, Turbo Grafx 16, Atari Jaguar, Neo Geo PRO-POW 3, Coregrafx 1-2, Super CD ROM, Japanese Virtual Boy



The first thing I'd check, is, are you powering your Famicom Disk System properly ? You need to plug in an external supply - i.e. the RAM adapter cable alone won't power your FDS drive. The supply has to be between 9V to 12V DC (maybe up to 15V) with the ground INSIDE the jack cable (those could also be called -9V or -12V DC).



Famicom Disk System (FDS) errors. Welcome to Famicom World. Please login or sign up. November 02, 2024, 08:43:36 am ERROR.01 No disk card ERROR.02 No disk power supply ERROR.03 Broken prong on disk card ERROR.04 Wrong maker ID a?|

FAMICOM DISK SYSTEM POWER SUPPLY



This guide aims to provide an overview of the power supply requirements and specifications for various retro consoles, and to offer advice on choosing aftermarket power supplies that are as close as possible to the original equipment. Famicom Disk System * 9V DC 400 mA ? ? Tip negative HVC-025 WSU090-1300-R 5.5 x 2.1 mm barrel jack External



To operate a Game Doctor, first connect the Game Doctor into the Famicom's cartridge slot. Next, connect the RAM Adapter to the top of Game Doctor, the RAM Adapter cable into the back of the FDS, and connect a power supply to the Game Doctor, Famicom, and FDS. When you turn on the Famicom you will see the normal FDS disk prompt.



Power Supply for Nintendo Famicom AV Power Supply for Nintendo Famicom AV Regular price a?!12.50 EUR. Regular price Sale price Power Supply All-in-One for Nintendo Famicom + Disk System Regular price a?!18.00 EUR. Regular price a?!20.00 EUR Sale price a?!18.00 EUR.

FAMICOM DISK SYSTEM POWER SUPPLY



Err. 01 = No disk card. Err. 02 = No disk power supply a?? batteries and/or AC adaptor. Err. 03 = Disk card is write protected. Err. 04 = Disk card not authenticated (game maker ID). Err. 05 = Disk card not authenticated (game name ID). Err. 06 = Disk card not compatible (version ID). Err. 07 = Wrong side of disk card set in drive. Err. 08



Both of my twins are the variants without an LED on the power button and both happen to have the Disc drive that doesn't need any modifications.
Famicom / Disk System (Moderators: manuel, L___E___T) How To Read / Write Games on Twin Famicom with FDSSTICK; User actions

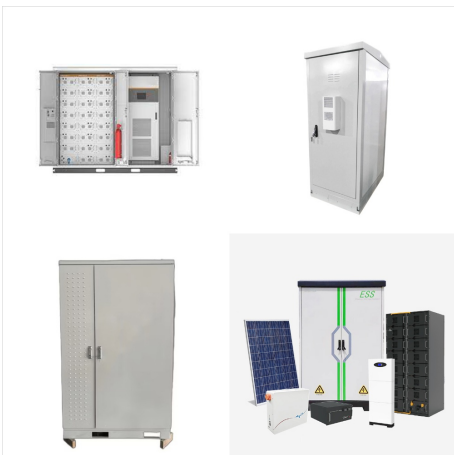


It's voltage that you need to be careful about, so don't use a 9-Volt power supply on a system that only needs 5 Volts. You could very easily fry your console by overvolting it! NES (top-loader), Famicom, AV Famicom, Famicom Disk System: Recommended Direct Triad Solutions: North America 9V 1.3A, Center-Negative, 5.5mm x 2.1mm: Triad WSU090

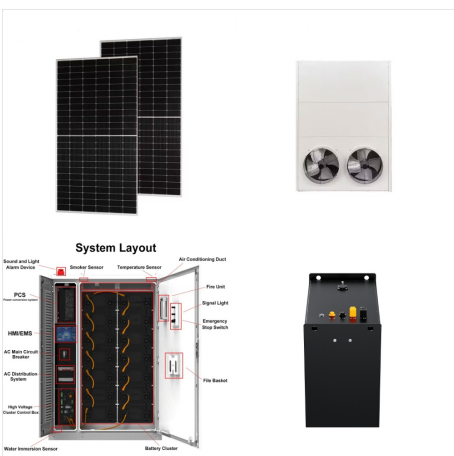
FAMICOM DISK SYSTEM POWER SUPPLY



The Famicom Disk System unit consists of two main parts: The custom Mitsumi 3a?3 Quick Disk drive mechanism on the right, and a Printed Circuit Board on the left which we will call the Power Board from now on. The well-known Drive Controller Chip (either FD7201 or FD3206) resides in the drive mechanism on the right.



Power your Nintendo Famicom+Disk System set with only one power supply. Design to replace the original AC adapter. 2m/6ft cable. Don't deteriorate video or audio. EU, US or UK plug. Don't need to use a step-down transformer. Overload and Short-Circuit Protection. CE certified and FCC regulated. 1 year warranty.



Then give the power adapter specs for the famicom, disk system, I etc. ancientflounder. Famiclone; Posts: 5; Location: Las Vegas, NV; Logged; Does the standard Famicom use the same power supply as an AV Famicom? Yes sir. Quote from: Arctic Feather on October 27, 2008, 06:31:31 pm

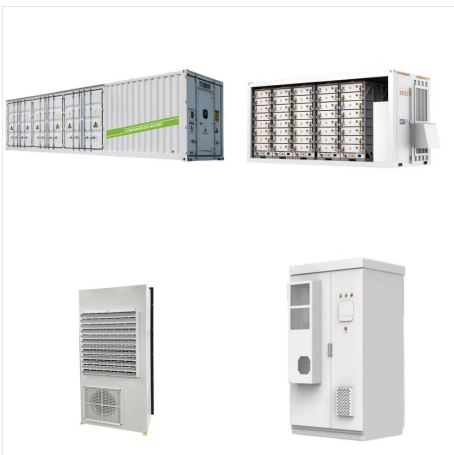
FAMICOM DISK SYSTEM POWER SUPPLY



No sharp twin. The famicom power supply has to be modified (I think to allow surges or something more juicy) then you have to do a lot of soldering. Finally some special cables. That's the in a nutshell Reply reply nickle241 a?c you must still be using the old guides, only part of that which is still fully accurate is the part about cables, the

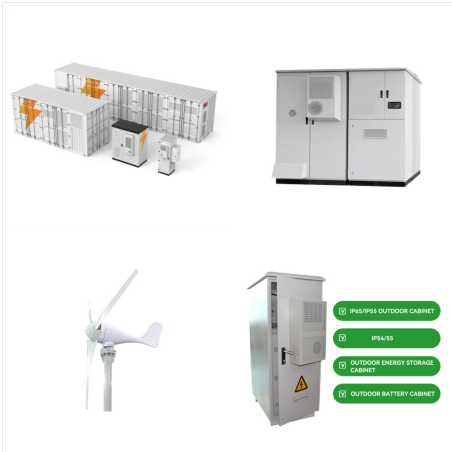


Famicom Disk Card. Successor Famicom Titler (1989) VO-U42S: Sharp 3D System, rebranded Nintendo Famicom 3D System; UADP-0041CEZZ: Power supply for AN-500, AN-505; Mods Audio issues . There is a known problem, likely a mistake in the PCB-layout, with low-pass filtered audio. To fix this, you can remove capacitor "C205" which you will find



By the same token, with a little patience & the ability to follow directions from a video, replacing the drive belt & calibrating the Disk System ain't that hard. The convenience of a single power supply give it an advantage over the A/V Famicom & Disk System. My AN-500R uses a modified PS-ONE power adapter with no issues.

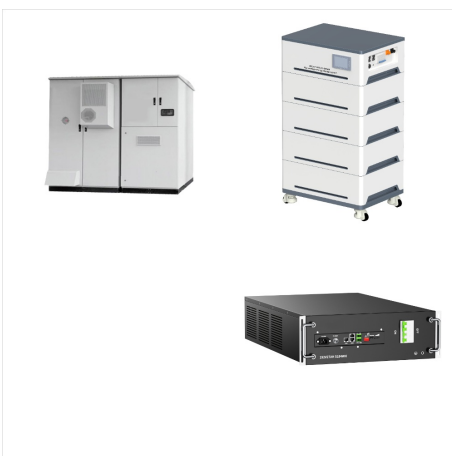
FAMICOM DISK SYSTEM POWER SUPPLY



Step 5. Save the dumped image to the blank. Once the disk is successfully read with all X 's gone and replaced by red bars, hit the SPACEBAR to eject the disk and F4 to exit and save the dump to the image.. If you are dumping a disk with more than one side, re-load the image in FDSLoader and hit 2 to go to side B. Insert Side B of the disk and begin the reading process.



If you want to make a buck, buy a replacement belt and a famicom disk game, and learn how to fix the disk system. Picking out and buying those special famicom games to bundle with the unit won't be worth it. But some classic action/plattform titles such as Super Mario Bros, Excite bike, Ice Climber, Balloon Fight, etc, are always nice.



It used to work great but now I pulled it out for the first time in a long time and its not so great. The LED is not lighting up and I just get a black screen. The Famicom I'm using works it runs carts still no problem. The disk system is not making a sound like its not getting power. I have an official power supply for it. Batteries don't work

FAMICOM DISK SYSTEM POWER SUPPLY



The Family Computer Disk System (HVC-022), abbreviated as FDS, Disk System, or Famicom Disk System, is a floppy disk unit peripheral for the Nintendo Family Computer game console, released on February 21, 1986 in Japan. Err. 02 = No disk power supply Err. 03 = Disk card is write protected Err. 04 = Disk card not authenticated (game maker ID



Famicom Disk System power supply question. By DarthKur in forum Technical and Restoration Society Replies: 12 Last Post: 10-09-2007, 05:41 AM. Super Nintendo AC Power Supply. By rpepper9 in forum Classic Gaming Replies: 3 Last Post: 07-09-2005, 07:38 PM. Posting Permissions



It's even the same power supply for my Roland SC-50 synth. The original power supply from that smelled like it was burning when I got it. Edited March 8, 2022 by eightbit. 1 It's recommended that to use the original Japanese power adaptor that came with the Famicom, Disk System or accessories when playing in the United States or Canada

FAMICOM DISK SYSTEM POWER SUPPLY



Tell us if swapping the power supply helped. Haha! Thanks P. And indeed, it was the power supply! I ordered a new power adapter but I began to feel impatient so I decided to hack an old PSone power adapter instead and solder the proper barrel jack on. (My PSone doesn't work anymore anyway.) It worked!



Can you use a super famicom's power supply on an original famicom? Welcome to Famicom World. Please login or sign up. October 31, 2024, 01:26:07 am Mobile Main Menu Home; Search; Calendar; Sign Up; Login; Famicom World Famicom / Disk System (Moderators: manuel, L___E___T)



Nintendo SUPER FAMICOM SYSTEM Power Supply? -----I have a Super Famicom but I need to know what type of power supply it uses? It came with a small power supply that says "video game" via old lady at a garage sale. The power supply is too small to be the right one, I think the lady just put it next to the system because it said video game..