

What is the home assistant must solar inverter plugin?

The Home Assistant Must Solar Inverter Plugin is a custom integration that adds support for monitoring and controlling Must solar inverters within the Home Assistant platform. This plugin enables you to retrieve real-time data, such as power production, battery status, and more, directly from your Must solar inverter.

Can I control a must solar inverter through home assistant?

Control Functionality: Control certain aspects of your Must solar inverter directly through Home Assistant. This integration is tested using a Must Solar PV18-3024 VPM (aka PV1800). However, it should work with other models that use the same communication protocol, such as the PH1800 and EP1800 series.

How do I add an inverter to my home assistant?

Open the Home Assistant UI. Navigate to "Configuration" -> "Integrations." Click the "+" button to add a new integration. Search for "Must Inverter" and select it. Enter the required configuration for your serial setup (USB, TCP, or UDP).

What is a must solar inverter monitoring plugin?

This plugin enables you to retrieve real-time data, such as power production, battery status, and more, directly from your Must solar inverter. Real-time Monitoring: View live data from your Must solar inverter, including power production, battery status, and other relevant information.

What is solar / battery charging optimisation for home assistant?

This documentation needs updating! Solar / Battery Charging Optimisation for Home Assistant. This appDaemon application attempts to optimise charging and discharging of a home solar/battery system to minimise electricity cost on a daily basis using freely available solar forecast data from SolCast.

Does ha work with KTL-X inverter?

I just integrated HA (my first addon) with SofarSolar KTL-X inverter, maybe it will work with other brands. All the brands like SofarSolar, Omnik, iGen, Solarman, Hosola, Goodwe, Solax, Ginlong, Samil may use similar protocol, not confirmed.

FINLAND HOME ASSISTANT SOLAR INVERTER INTEGRATION



Integration Solar inverter huawei 2000L. Feature Requests. joem (Zsolt) December 14, 2022, 8:41am 2310. Quick question: My SUN2000 So I have two different values for daily solar production in Home Assistant and every single value is too high compared with the value in Huawei Portal. 1 Like. henalmeida1978 (Henalmeida1978)



SAJ Solar inverter. Configuration. status74 December 29, 2023, 12 Home Assistant integrator for SAJ H1 inverters. I'm running this and I'm able to get the realtime data. (Check the discussions on github on how to setup the mqtt bridging) I use the WiFi one which seems to work fine but the morning after I installed the integration



My current solar inverter is almost at the end of it's life??? so I have begun looking at replacement inverter options. Whilst I am looking at Fronius and SMA inverters, I am open to other manufacturers that may integrate well with Home Assistant. HA integration wont be my only parameter for choosing an inverter, but it will be one element I will take into ???

FINLAND HOME ASSISTANT SOLAR INVERTER INTEGRATION



Integration Solar inverter huawei 2000L. Feature Requests. henalmeida1978 (Henalmeida1978) February 19, 2022, 7:55pm I have an old TP-Link access point where I installed Openwrt, but I can not get the connection from my home network to the inverter going. I can connect to the WLAN of the inverter and I can of course connect to my home



These inverters cannot be integrated with the nice and stable SMA SOLAR integration provided by @emontnemery as those inverters are lacking a web server to poll. If your inverter is configured with the SUNNY EXPLORER application (as an indicator of legacy) you may need to use a physical RTU connection to ingest the legacy YASDI formatted data.



Home Assistant - Setup Introduction.

HomeAssistant is an open source project that allows you to monitor, control and automate various devices on a single platform. SolarAssistant integrates with HomeAssistant via MQTT automatic discovery. It allows you to turn on relays or control external devices based on inputs from your solar system.

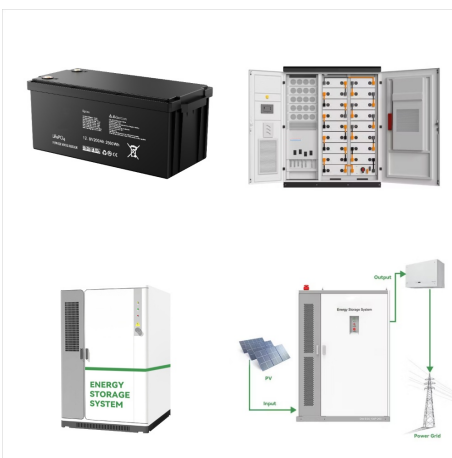
FINLAND HOME ASSISTANT SOLAR INVERTER INTEGRATION



Home Assistant 2023.5.4 Supervisor 2023.04.1
Operating System 10.2 Frontend 20230503.3 -
latest. copied all the GIT files into a directory:
custom_components>huawei_solar. The only thing
is to reset inverter ???



Home Assistant integration for Huawei Solar
inverters via Modbus - wlcrs/huawei_solar
Connecting to daisy chained inverters. Home
Assistant integration for Huawei Solar inverters via
Modbus - wlcrs/huawei_solar. Argogma (Johannes)
November 30, 2023, 7:46am 2781. You are right,
the dongle is connected to the master inverter, but
for the

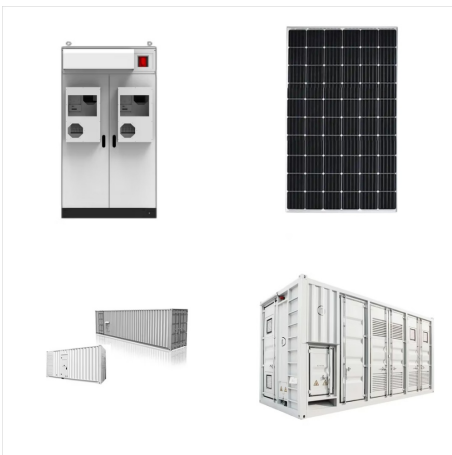


My old Goodwe inverter has died and i am looking
for a new alternative. As I hated not being able to
get data form the old one i am looking for something
with a Local api for home assistant integration, and
the Kostal Plenticore 5,5 kW hybridinverter seems
like a ???

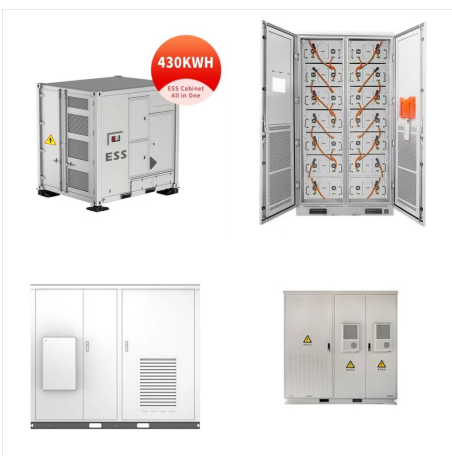
FINLAND HOME ASSISTANT SOLAR INVERTER INTEGRATION



I've been using the MQTT integration between Solar Assistant and Home Assistant for months now. It's unfortunate that the SA beta only allows 5 parameters to be set from HA, and the only useful one is the work mode. The other 4 are grid voltage high/low and gride frequency high/low, and I can't think of any use case to change those via automation.



I've been working on adding an official integration for Huawei Solar inverters to Home Assistant. First of all: This is GREAT news. The existing stuff is mediocre at best and I think Huawei inverters are really popular and deserve a great support in Home Assistant. Thank you so much for your efforts! Of course, I'm willing to test your



It works by both pull monitoring data (Via the RS232 or USB port on the Inverter) and sending to Home Assistant via MQTT, as well as actually programatically receiving commands (again via MQTT) to change the ???

FINLAND HOME ASSISTANT SOLAR INVERTER INTEGRATION



This integration communicates with your Skyline hybrid inverter system, providing real-time visibility on solar output, battery status, utilisation and more. It also allows you to control the ???



Hi All, I am seeing a lot of issues with the integration of inverters Deye/Sunsynk. Hopefully, this helps some. If you're using the inverter with the E-Linter data logger use gdwaterworth solution (Unfortunately not local LAN). If ???

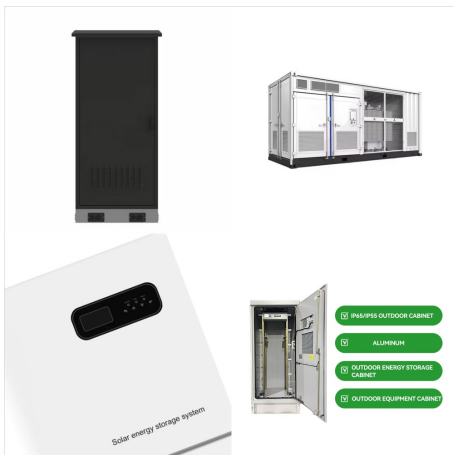


When more than one inverter is discovered, some additional entities are registered which provide summed power for solar output, inverter output and grid / house / EPS demand. These are integration entities and not linked to any specific device so are only visible under the main integration entities view.

FINLAND HOME ASSISTANT SOLAR INVERTER INTEGRATION



The GoodWe integration will poll a GoodWe solar inverter over the local network and present its runtime values as sensors in Home Assistant. It works with GoodWe ET, EH, BT, BH, ES, EM, DT, MS, D-NS, XS and BP families of inverters. Different inverter families/models expose different sets of sensors, the newer models have usually broader support.



Instructions on how to connect your SMA Solar Inverter to Home Assistant. 2024.12.4 Getting started; Documentation . Installation; Automations; Dashboards; Voice assistants; Device organization; The SMA Solar integration was introduced in Home Assistant 0.36, and it's used by 2616 active installations.



Home Assistant Community SofarSolar inverter integration. Universal Solar Inverter over Modbus RS485 / TCP custom_component (AlphaESS, Growatt, Sofar, SolaX, Solinteg, Solis, SRNE, Swatten, TIGO TSI & Qcells Q.Volt Hyb) do sofara uda??o mi si?? wyci??gn???? adresy i mam nadziei?? ? 1/4 e wszystkie s?? poprawne poni? 1/4 ej podaj?? kod z mojego

FINLAND HOME ASSISTANT SOLAR INVERTER INTEGRATION



The Domoticz system has functionality to interface with the SolarMax solar inverter via a LAN interface. I now use Home Assistant, however I have no choice but to keep Domoticz to interface with my SolarMax inverter. SolarMax S-Series inverter integration Community Guides. Hello, I would like to share with you my tutorial on how to



I try to integrate my Kostal Inverter via the Integration tool in HA. Found the "Kostal Plenticore Solar Inverter". But if I try to make a connection with the correct host-address and the correct password HA says: Verbindung fehlgeschlagen I have copied the host-address from the browser??? I must say, this is my first day with HA



I'm very happy with my setup using Solar Assistant for effortless communication with my newly installed Deye 8kw Inverter with my pre-existing Home Assistant Setup. I bought the preinstalled Pi from Solar Assistant with a ???

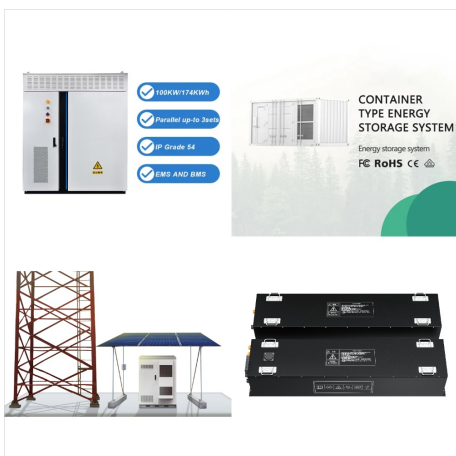
FINLAND HOME ASSISTANT SOLAR INVERTER INTEGRATION



The Domoticz system has functionality to interface with the SolarMax solar inverter via a LAN interface. I now use Home Assistant, however I have no choice but to keep Domoticz to interface with my SolarMax inverter. I want to retire Domoticz, so having the SolarMax integration in HA would enable me to use Home Assistant exclusively. Domoticz ???



Home Assistant Community Solar Inverter: Kostal Plenticore Plus integration. Third party integrations. wpunkts (Wenzel) March 21, 2020, 3:08pm 21. Hi Lukas, awesome work. For example the "kostal home power" is zero when my only energy source is the grid. I would expect to see the data from "kostal home power from grid" on this channel.



For those with H2 inverters, I managed to get the SAJ esolar HACS add-on connected, it logs in fine and finds the inverter, but doesn't see anything else. It seems to find the API fine and some other basic info, so as my address, but I can't get any actual system stats. e.g. Solar power, battery level etc.

FINLAND HOME ASSISTANT SOLAR INVERTER INTEGRATION



Looking for v1.0.0 testers I've polished the integration in the past weekend, and am looking for people willing to test the beta-version. I expect the sensor-part to be very stable already, but am not formally releasing it because of the new configurable parameter-entities that need some testing. I'm especially looking for users with more advanced setups with multiple ???



Gain insight into your energy production by integrating your solar panels into Home Assistant. If you also set up the Solar Forecast integration, you will be able to see expected solar production and automate based on planned production.



I have a Solar PV with inverter set up along with batteries and use Solis cloud to monitor it. Is there a way anyone knows to get solis cloud to integrate with HA or get the readings straight from the inverter? I have the following batteries and inverter: The inverter looks like a S5-EH1P(3-6)K-L The batteries are Pylontech US3000C"s

FINLAND HOME ASSISTANT SOLAR INVERTER INTEGRATION



This excellent integration will pull Octopus Price data in to Home Assistant. Solar Opt pulls data from Octopus independently of this integration but will extract current tariff codes from it if they are available.