



Did lithium batteries explode in a South Korea factory?

Video footage has been released of the moment lithium batteries exploded in a South Korea factory, leading to a fire which killed 23 people. The blaze broke out on Monday morning at the Aricell plant in Hwaseong city, about 45km (28 miles) south of the capital Seoul. Read more: Exploding batteries spark deadly S Korea factory fire

What caused a blaze at a lithium battery plant in South Korea?

Fire authorities say blaze caused by battery cells exploding inside a warehouse. A fire at a lithium battery plant in South Korea has killed at least 22 people and injured eight.

Who exports lithium batteries in South Korea?

South Korea is a leading exporter of lithium batteries, hosting top industry players such as LG Energy Solution, Samsung SDI, and SK On. Authorities say blaze caused by battery cells exploding inside a warehouse.

How did a lithium battery fire start?

Workers who fled the fire said it started when a single battery cell caught fire, triggering a series of explosions among some of the 35,000 lithium battery cells stored on the factory's second floor, according to Mr. Kim. Fires can occur in lithium batteries when the inside layers are compressed, causing a short circuit.

Are lithium batteries a fire risk?

To meet the new production schedule, plant operators assigned untrained temporary hires en masse to the production lines for lithium batteries, which are known to be a fire risk, the police said. The company ignored problems that sprang up from the rapid production, including defective batteries, according to the police.

Are lithium batteries at risk of exploding?

Lithium batteries are at risk of exploding if they are damaged or overheated. Whatever the cause, once the fire took hold, it would have spread at speed - giving the workers little time to escape, according to Kim Jae-ho, fire and disaster prevention professor at Daejeon University.

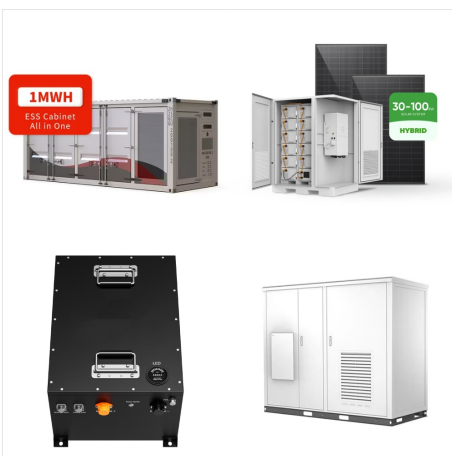
FIRE AT LITHIUM BATTERY PLANT IN SOUTH KOREA



Multiple powerful explosions set a lithium battery factory on fire in South Korea, killing 22 workers, most of them Chinese nationals, as it burned out of control for nearly six hours, fire



SEOUL - Aricell, a lithium battery plant that recently experienced a fatal fire resulting in 23 deaths, had not undergone any government industrial safety inspections in the past five years



Twenty-two people were killed in a massive fire at a South Korean lithium battery plant on Monday, most of them Chinese nationals, in one of the country's worst factory disasters in years.

FIRE AT LITHIUM BATTERY PLANT IN SOUTH KOREA



Workers who fled the fire said it started when a single battery cell caught fire, triggering a series of explosions among some of the 35,000 lithium battery cells stored on the factory's second floor, according to Mr. Kim. Fires can occur in lithium batteries when the inside layers are compressed, causing a short circuit.



Twenty-two people are dead following an explosion at a battery factory in Hwaseong, South Korea, south of Seoul. Most of the workers were Chinese nationals, Reuters reports, citing local fire



Insights from Reuters, Financial Times, The New York Times, and Associated Press. The News. A fire at a lithium battery plant near South Korea's capital Seoul killed 22 people, most of them

FIRE AT LITHIUM BATTERY PLANT IN SOUTH KOREA



The lithium battery plant is owned by Aricell, a South Korean primary battery manufacturer. Shares of Aricell's parent company, S-connect, plunged by over 20 per cent on the Seoul exchange by



SEOUL, Jun. 25 (Korea Bizwire) ??? A devastating fire at a primary battery manufacturing plant in Hwaseong, South Korea, has once again brought the safety risks of lithium batteries into sharp focus. The blaze, which broke out at 10:31 a.m. on June 24 at the Aricell factory in Hwaseong's Seosin-myeon district, has claimed the lives of 22 workers, with eight others injured.



A massive factory fire that began after several lithium batteries exploded has killed at least 22 people in South Korea. The blaze broke out on Monday morning at the Aricell plant in ???

FIRE AT LITHIUM BATTERY PLANT IN SOUTH KOREA



At least 22 bodies were found following a fire at a lithium battery manufacturing plant in South Korea, officials and local media said on Monday.. The fire erupted at 10:30 a.m. (0130 GMT) at an



A fire at a lithium battery manufacturing plant in Hwaseong, South Korea, on Monday killed at least 23 people and injured eight others. Parts of the top floor of the facility ??? operated by battery manufacturer Aricell ??? collapsed, and chunks of concrete spilled into the road.



Deadly Fire Kills More Than 20 After Explosion at a Lithium Battery Plant with 35,000 Units in South Korea. A massive fire at around 10:30 a.m. on Monday 24 June 2024 at a lithium battery manufacturing plant in South Korea has resulted in the deaths of at least 22 individuals, including 18 Chinese nationals.

FIRE AT LITHIUM BATTERY PLANT IN SOUTH KOREA



A fire at a lithium battery plant near South Korea's capital Seoul killed 22 people, most of them migrant workers from China. It is one of the country's deadliest workplace blazes in recent years, though South Korea has long struggled with industrial accidents.



HWASEONG, South Korea (Reuters) -A lithium battery factory in South Korea was set on fire after multiple batteries exploded on Monday, killing 22 workers, most of them Chinese nationals, fire officials said. Eighteen Chinese workers, two South Koreans and one Laotian were among the dead. The nationality of the other deceased worker was yet to be confirmed, Kim ???



Lithium battery plant with 35,000 units blows up in South Korea, 20 dead The fire broke out in the early hours of Monday, at around 10:30 a.m. at a factory run by battery manufacturer Aricell in

FIRE AT LITHIUM BATTERY PLANT IN SOUTH KOREA



A fire at a lithium battery factory in South Korea has killed at least 22 people, including 19 foreign nationals, local officials have said. The blaze broke out on Monday morning after a number of

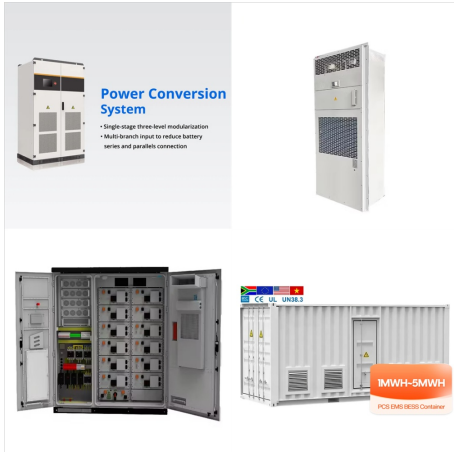


Seoul, South Korea ??? A fire at a lithium battery manufacturing factory near South Korea's capital killed more than 20 people on Monday, most of them workers from China, officials said. Rescue



The blaze broke out on Monday morning at the Aricell plant in Hwaseong city, about 45km (28 miles) south of the capital Seoul. Read more: Exploding batteries spark deadly S Korea factory fire 25

FIRE AT LITHIUM BATTERY PLANT IN SOUTH KOREA



President Yoon Suk Yeol issued instructions to mobilize emergency personnel. Twenty bodies were found following a fire at a lithium battery manufacturing plant in South Korea, officials and local



At least 22 people have died in South Korea after a powerful explosion and fire at a lithium battery factory. The fire tore through the Aricell plant in Hwaseong city, a major industrial cluster

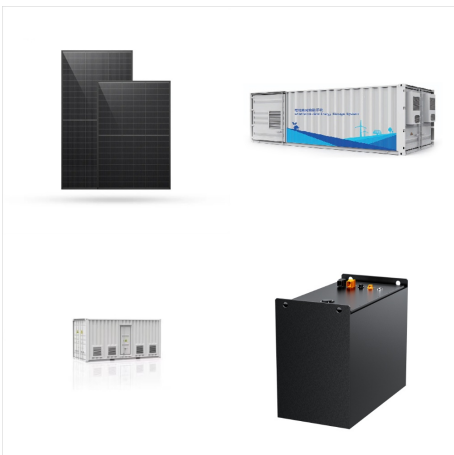


In short: A fire broke out at a lithium battery manufacturing plant in South Korea on Monday, local time. At least 22 people have been killed and eight injured, most of them Chinese nationals.

FIRE AT LITHIUM BATTERY PLANT IN SOUTH KOREA



OverviewBackgroundExplosionsCasualtiesInvestigationResponse



A fire at a battery manufacturing plant in South Korea that killed 23 people on Monday, June 24, highlights the growing need for more education and regulation when it comes to battery production, storage, use, and disposal. It also offers an opportunity to discuss the differences between lithium metal batteries and lithium-ion batteries and the unique fire safety ???