

Should I replace the battery pack on my Ryobi 18V?

If all previous attempts to revive or repair your Ryobi 18V battery have been unsuccessful, it may be necessary to replace the entire battery pack. This is a more comprehensive repair option that ensures reliable performance and eliminates any underlying issues within the battery. Here's how you can replace the battery pack:

Do Ryobi batteries come with a warranty?

Ryobi equipment and batteries come with a three-year warranty. If your Ryobi 18V Lithium-Ion Battery is less than three years old, you might be in luck. Before you proceed with any attempts to fix the battery yourself, it's worth checking if your battery is still under warranty.

What should I do if my Ryobi battery won't charge?

If your Ryobi lithium-ion battery won't charge, there are a few things you can try to repair it. First, make sure the battery isn't too hot or too cold. If it is, let it cool down or warm up to room temperature before trying to charge it. Next, check the battery contacts for any dirt, dust, or corrosion.

Why is my Ryobi 18v battery not charging?

The reason for this can sometimes be reversed, and sometimes it is a lost cause. A Ryobi 18v battery will typically stop charging if it's too hot or too cold, if one (or more) of the individual battery cells has an internal short, or if the overall voltage of all the cells has fallen below the minimum charge threshold of the charger.

What if my Ryobi 18v battery is less than 3 years old?

If your Ryobi 18V Lithium-Ion Battery is less than three years old, you might be in luck. Before you proceed with any attempts to fix the battery yourself, it's worth checking if your battery is still under warranty. If so, consider reaching out to Ryobi's customer service or returning to your place of purchase.

What is a Ryobi 18v battery?

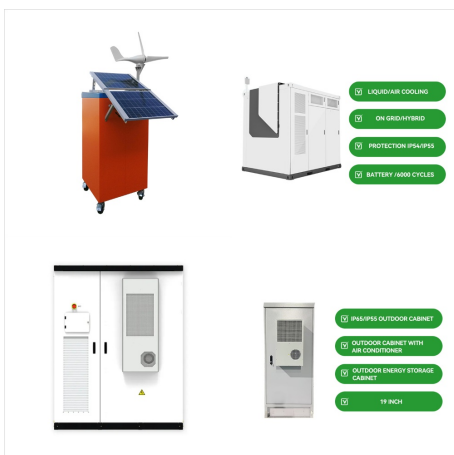
Ryobi 18V batteries are lithium-ion (Li-ion) batteries, which are known for their high energy density and long-lasting performance. These batteries are rechargeable and provide power to a wide range of Ryobi power tools, such as drills, saws, and sanders.



Fancy Buying 18V 6.0Ah P108 Battery
Replacement for Ryobi 18 Volt Battery Lithium P102 P103 P104 P105 P107 P109 P122, Battery for Ryobi ONE+ Cordless Drill Tool (1Pack) 4.4 out of 5 stars
1,032 4 offers from \$2295 \$ 22 95



Battery 8.0AH For RYOBI P108 18V 18Volt One Plus High Capacity Lithium-ion P107. 40V 6.0Ah Max Battery For Ryobi 40 Volt Lithium-ion OP4050 OP40602 High Capacity. \$ 38.98 Although we have just written a whole article explaining how to fix Ryobi batteries when they go wrong please don't less us put you off from buying one.



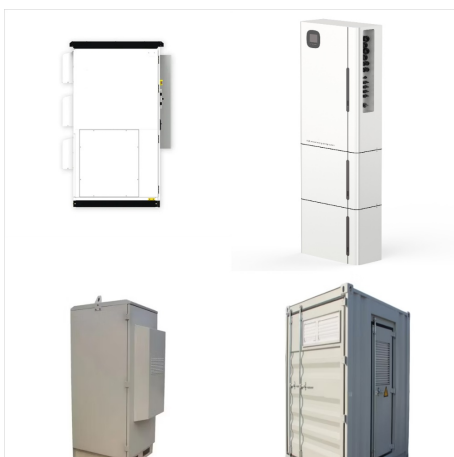
As one of the leading brands that have the most extensive range of DIY cordless tools, Ryobi designed the system to have one versatile, interchangeable battery to fit and power more than one hundred power tools. However, despite the tireless efforts and innovations, there are still battery issues that haunt this remarkable system.



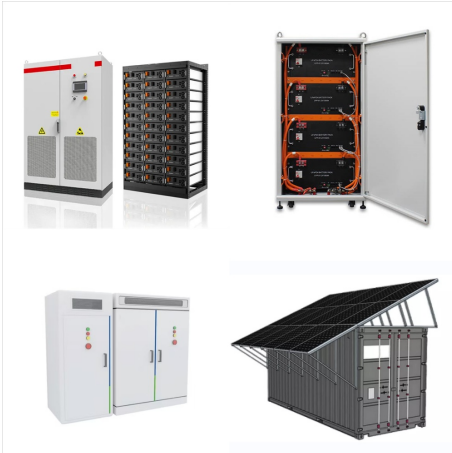
Power tools like drill machines, ratchet kits, framing nailers, table saws, fan blower, hand vacuum, string trimmers, etc., uses Ryobi 18V lithium-ion battery pack, while larger devices like push lawn mowers, pressure washers, chain saws, etc., powered by 40V battery.



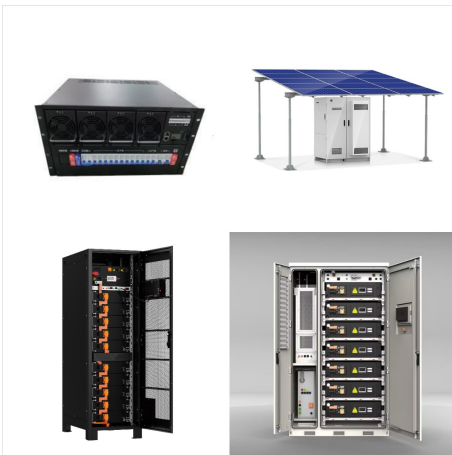
Before we dive into the troubleshooting steps, let's first take a moment to fully grasp the concept of a Ryobi battery. A Ryobi battery is not just any ordinary power source, but a cutting-edge rechargeable lithium-ion battery meticulously designed to fuel a wide range of cordless tools within the innovative Ryobi lineup.



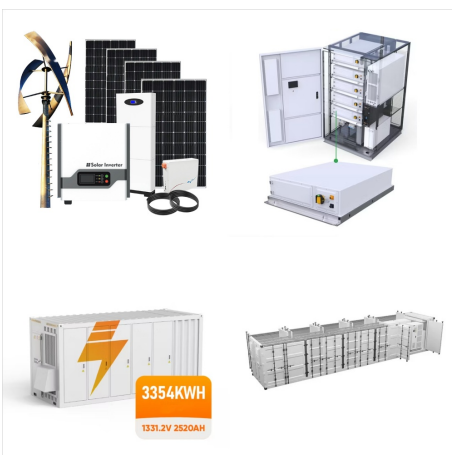
The Ryobi ONE+ 18V 1.5 Ah Lithium-ion battery is a cordless tool battery back manufactured by Ryobi. Ryobi Limited is a Japanese manufacturer of components for electronics, automobiles, and telecommunications industries. Ryobi is also a seller of printing equipment, power tools, and builders' hardware.



You can repair, replace, and rebuild Ryobi battery system for you to continually utilize it, if your battery deteriorate and lose its function. A Ryobi 18v battery has extreme charge and discharge capacities. If you plan to replace these with cells having lower charge and discharge rates, it will result to overheating, explosion, or cell



just bought a Ryobi lawn edger and am using a ryobi 18v battery which i charged first, then the edger worked great for about 5 minutes then died and when i tried to ReCharge the battery it just blinked red so i stopped???what happened and should I return it? am really disappointed, the unit worked just great edging the lawn. Reply



The Ryobi 18V battery is a powerful option for people who are looking for a cordless power tool. But what happens when your Ryobi battery says fully charged We hope the information above helps you better understand how to fix Ryobi 18v battery by maintaining it correctly and that our advice will inspire you to take care of the rest of your



Check the label on the Ryobi battery pack to find out the type of cells it has in it. If it says nickel cadmium (NiCad) or nickel metal hydride (NiMH), continue to fix your Ryobi battery. If it says lithium ion or lithium polymer, replace the entire battery or take the battery to ???



As a general rule, a Ryobi charger will rapidly blink green when the battery is charging and will hold a solid green light when the battery is charged. If a charger only indicates a fading red light, then the battery is either too hot, too cold, has ???



Power Tool Batteries: Replace the Cells in the Battery Pack. When your power tool battery pack bites the dust, probably your first inclination is to buy a new one. But if the battery is out of production or the price of a new one is sky high, consider rebuilding it yourself instead of paying a professional rebuilder. That'll save you about \$25.



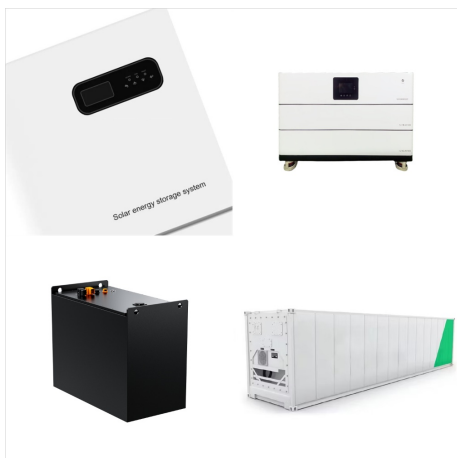
Repairing a dead Ryobi 18V battery can save you money and extend the lifespan of your power tools. Through the steps outlined in this guide, you've learned how to identify the signs of a dead battery, gather the ???



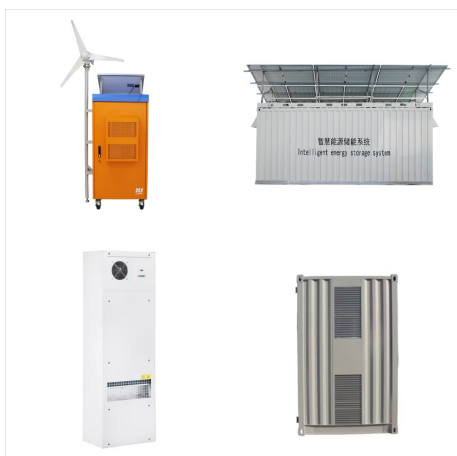
#1 Inspect the Power Cord. The first thing to remember is that "cordless" doesn't mean that everything involved is completely operating without a cord. When it comes to your Ryobi primary battery pack charger, the cord is inescapable. If you plug in your charger, even without a battery pack already on it, you should at least have a solid RED LED light up, ???



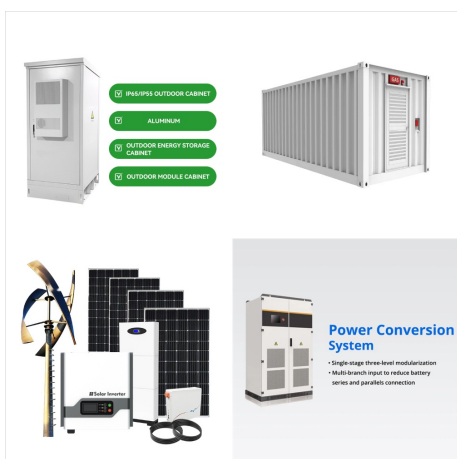
In this article, we will show you how to fix a Ryobi battery that won't charge. Whether you're an avid DIY enthusiast or simply rely on your Ryobi tools for everyday tasks, a non-charging battery can be quite frustrating. steps, it's important to have a basic understanding of Ryobi batteries. Ryobi offers a range of batteries



Keywords: Ryobi lithium One+ One + BMS . See less See more im trying to fix an 18v 4mah ryoby battery, it had slight water damaged pressing the test button does nothing . testing voltages, and manually charting all cells to 4.11v did not help. feeding 4.4 volts into the pin right next to RST and shorting rst to ground I get all 4 flashing



Here are some common troubleshooting steps to help you identify and potentially fix the issue. Skip to main content Secondary navigation. Products; MANUALS; Myryobi Why isn't my RYOBI battery charging? Last update: 25/10/2023, 16:05. What do the flashing lights mean on RYOBI 18V Single Chargers?



P197 Ryobi(R) 18V Lithium Battery Rebuild Service. Our skilled technicians will replace all of the cells in your battery. Send your P197 battery pack to us for repair today! Note: When we are rebuilding your battery, if your circuit board is found to be defective, we will contact you. At that time we will provide you with the option of



The robust design and anti-vibration technology increases durability and enhances user experience. Easily install and remove the battery with secure quick-release latches. This 18V ONE+ 4Ah Lithium-ion Battery is backed by the RYOBI 3-Year Manufacturer's Warranty and includes (1) PBP005 18V ONE+ 4Ah Lithium-ion Battery and Operator's Manual.



Yes, the test leads are reversed but you can still see the voltage (minus the negative sign). This is how to truly test the voltage of your Ryobi 18v battery. Next, check the voltage of each of the 5 cells. They should be uniform, or relatively close. Test across from each of the cells to see what the individual voltages are.



The Ryobi 18V battery operates on lithium-ion technology, which offers several advantages over traditional nickel-cadmium (NiCad) batteries. Lithium-ion batteries deliver more power, have a higher energy density, and ???