



tears, standard Bolt Solid Plate fasteners can be combined with three-bolt Rip Repair fasteners. Three-bolt Rip Repair fasteners can also be used to bridge "soft" spots in the belt before they become rips. FLEXCO(R) BOLT SOLID PLATE Fastening System Ordering Information Belt Width Ordering Number mm in. 1 140 190 1-1/2 2 2-1/4 2-1/2 3 90



Flexco (R) Size 140. Available in various metal options, Flexco (R) Bolt Solid Plate Fastening System Size 140 also comes in VP ???, featuring a rubber-covered top plate for increased impact protection and conveyor component compatibility.. Fastener Details. Design: Solid plate; piloted bolts with tapered tips; Belt Thickness: 3/16" to 7/16" (5 mm to 11 mm)



tears, standard Bolt Solid Plate fasteners can be combined with three-bolt Rip Repair fasteners. Three-bolt Rip Repair fasteners can also be used to bridge "soft" spots in the belt before they become rips. FLEXCO(R) BOLT SOLID PLATE Fastening System Ordering Information Belt Width Ordering Number mm in. 1 140 190 1-1/2 2 2-1/4 2-1/2 3 90

FLEXCO BOLT SOLID PLATE FASTENING SYSTEM



The Flexco(R) Bolt Solid Plate Fastening System produces a strong, sift-free splice with superior holding ability thanks to a combination of top-and-bottom plate compression and high-tensile-strength bolts. Strength of this fastener is derived from the compression of the plates, mounted above and below the belt, with high tensile strength bolts.



Flexco(R) Bolt Solid Plate Fastening System. Family. Flexco(R) Size 2. Specifications. use imperial use metric. Fastener Material Steel. Package Configuration 25 Fastener Sets per Box. Belt Thickness (in.) 9/16-13/16. Belt Thickness (mm) 14-21. Mechanical Fastener Rating (kN/m) 75.



The Flexco(R) Bolt Solid Plate Fastening System produces a strong, sift-free splice with superior holding ability thanks to a combination of top-and-bottom plate compression and high-tensile-strength bolts. Strength of this fastener is ???

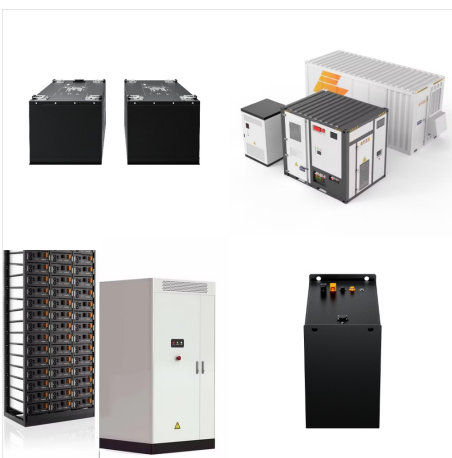
FLEXCO BOLT SOLID PLATE FASTENING SYSTEM



Let us help you select the correct Flexco(R) Bolt Solid Plate Fastener for your application. Learn more about the features, browse all products and access related resources. Learn more about the features and benefits of the Flexco (R) Bolt Solid Plate Fastening System,



The Flexco (R) Bolt Solid Plate Fastening System produces a strong, sift-free splice with superior holding ability thanks to a combination of top-and-bottom plate compression and high-tensile-strength bolts. Shop Flexco Fasteners. View Literature, Manuals & Videos



At Flexco, we pride ourselves on helping you - and your belt conveyor system ??? work better than ever before. That's why we don't just sell products. We partner with you to enhance productivity. Choosing the proper conveyor belt fastening system is one of the most important steps in splicing a belt. Our mechanical belt fasteners

FLEXCO BOLT SOLID PLATE FASTENING SYSTEM



In heavy-duty applications like coal, cement, mining, and aggregate, there are two main belt fastener types: Hinged Plate and Solid Plate. Hinged plate fasteners, often used with small pulleys, are installed into each end of the belt and then joined together and held in place with a pin.



For jagged, lengthwise conveyor belt tears, standard Bolt Solid Plate Fasteners can be combined with three-bolt Rip Repair Fasteners. Rip Repair Fasteners can also be used to bridge "soft" spots in the belt before they become rips. Fastener Details. Design: Solid plate; piloted bolts with tapered tips, 2 or 3 bolt design

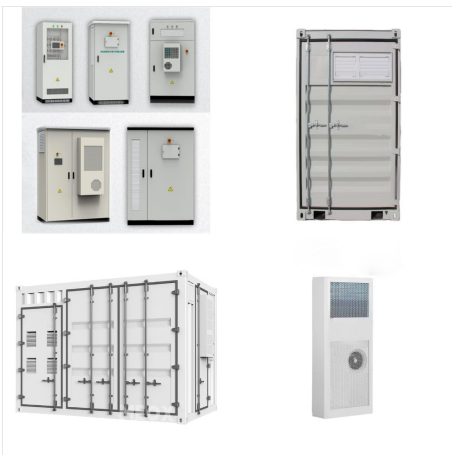


Flexco (R) Bolt Solid Plate Fastening System Size 3 accommodates belts from 5/16" and over (24 mm and over) and up to 560 PIW (100 kN/m). Fastener Details. Design: Solid plate; piloted bolts with tapered tips; Belt Thickness: 5/16" and over (24 mm and over) Minimum Pulley Diameter: 48" ???

FLEXCO BOLT SOLID PLATE FASTENING SYSTEM



tears, standard Bolt Solid Plate fasteners can be combined with three-bolt Rip Repair fasteners. Three-bolt Rip Repair fasteners can also be used to bridge "soft" spots in the belt before they become rips. FLEXCO(R) BOLT SOLID PLATE Fastening System Ordering Information Belt Width Ordering Number in. mm 1 140 190 1-1/2 2 2-1/4 2-1/2 3 90



Flexco (R) Size 190. Available in various metal options, Flexco (R) Bolt Solid Plate Fastening System Size 190 also comes in VP ???, featuring a rubber-covered top plate for increased impact protection and conveyor component compatibility.. Fastener Details. Design: Solid plate; piloted bolts with tapered tips; Belt Thickness: 5/16" to 9/16" (8 mm to 14 mm)



Heavy-Duty Belt Fastener Types In heavy-duty applications like coal, cement, mining, and aggregate, there are two main belt fastener types: Hinged Plate and Solid Plate. Hinged plate fasteners, often used with small pulleys, are installed into each end of the belt and then joined together and held in place with a pin.

FLEXCO BOLT SOLID PLATE FASTENING SYSTEM



Flexco(R) Bolt Solid Plate fasteners are engineered to meet the demands of the toughest material handling applications, providing a strong, sift-free splice with superior holding ability. A choice ???



tears, standard Bolt Solid Plate fasteners can be combined with three-bolt Rip Repair fasteners. Three-bolt Rip Repair fasteners can also be used to bridge "soft" spots in the belt before they become rips. FLEXCO(R) BOLT SOLID PLATE Fastening System Ordering Information Belt Width Ordering Number mm 1 140 190 1-1/2 2 2-1/4 2-1/2 3 90? Templates

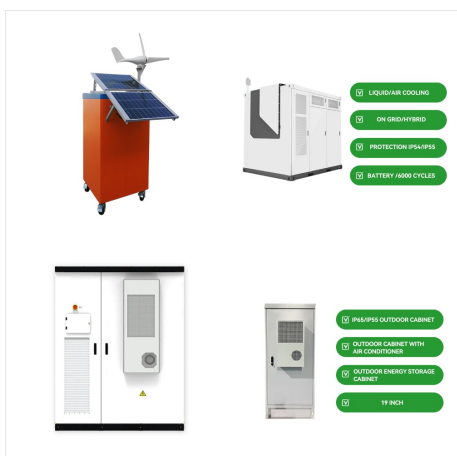


Flexco (R) Bolt Solid Plate Fastening System Size 1-1/2 accommodates belts from 7/16" to 11/16" (11 mm to 17 mm) and up to 300 PIW (50 kN/m). Fastener Details. Design: Solid plate; piloted bolts with tapered tips; Belt Thickness: 7/16" to 11/16" (11 mm to 17 mm)

FLEXCO BOLT SOLID PLATE FASTENING SYSTEM



FLEXCO(R) BOLT SOLID PLATE Fastening System The Industry Standard for Strong, Long-Lasting Splices Flexco(R) Bolt Solid Plate fasteners are engineered to meet the demands of the toughest material handling applications, providing a strong, sift-free splice with superior holding ability. A choice of sizes accommodates belts from 3/16" (5 mm) to



Flexco(R) Bolt Solid Plate BSP200 Fastener System Bolt Solid Plate Flexco(R) Bolt Solid Plate fasteners are engineered to meet the demands of the toughest material handling applications, providing a strong sift-free splice and superior holding ability. A choice of sizes accommodates belts from 3/16" (5 mm) to over 15/16" (24 mm) thick. High



The Flexco (R) Bolt Solid Plate Fastening System produces a strong, sift-free splice with superior holding ability thanks to a combination of top-and-bottom plate compression and high-tensile-strength bolts. Rubber-Covered Steel Top Plates: Our bolt solid plate fasteners are available with rubber-covered top plates,

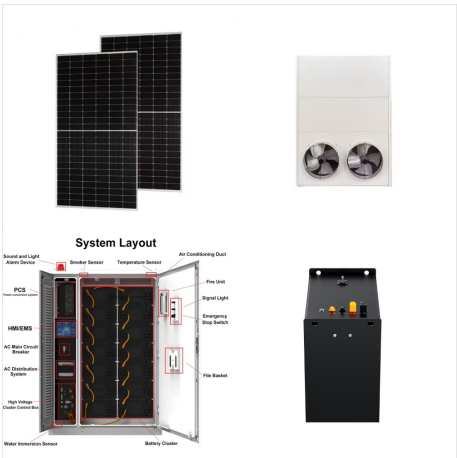
FLEXCO BOLT SOLID PLATE FASTENING SYSTEM



Flexco,???,???,???,Flexco ???



The Flexco (R) Rivet Solid Plate Fastening System is recommended for high-tension applications, with a staggered, multiple-point attachment for a long-lasting hold. Ideal for use with straight-warped belts because rivets separate the fibers instead of displacing the carcass. View Literature, Manuals & Videos.



tears, standard Bolt Solid Plate fasteners can be combined with three-bolt Rip Repair fasteners. Three-bolt Rip Repair fasteners can also be used to bridge "soft" spots in the belt before they become rips. FLEXCO(R) BOLT SOLID PLATE Fastening System Ordering Information Belt Width Ordering Number mm in. 1 140 190 1-1/2 2 2-1/4 2-1/2 3 90

FLEXCO BOLT SOLID PLATE FASTENING SYSTEM



Flexco(R) Bolt Solid Plate Fasteners permit natural conformance with troughing or transition idlers. 140, 190 and 2-1/2 size fasteners are specifically designed for thinner belting, allowing increased compression, greater reach-back, and ???



FLEXCO(R) BOLT SOLID PLATE Fastening System Silicone Lubricant Spray Authorised Distributor: 236 Albert Amon Rd ??? Meadowdale Ext. 7 ??? Germiston 1614 ??? South Africa Tel: +27-11-608-4180 ??? Fax: +27-11-454-5821 ??? E-mail: flexco@flexco Visit for other Flexco locations and products.



Flexco Mechanical Fasteners offer strength and durability with fast, easy installation for a quality, long-term splicing option. Solid plate fasteners consist of one plate that is installed into both ends of the belt and fastened together. Solid plate fasteners are used with larger pulleys and for applications that require a sift-free

FLEXCO BOLT SOLID PLATE FASTENING SYSTEM



Flexco (R) Bolt Solid Plate Fastening System Size 3 accommodates belts from 5/16" and over (24 mm and over) and up to 560 PIW (100 kN/m). Fastener Details. Design: Solid plate; piloted bolts with tapered tips; Belt Thickness: 5/16" and over (24 mm and over) Minimum Pulley Diameter: 48" ???