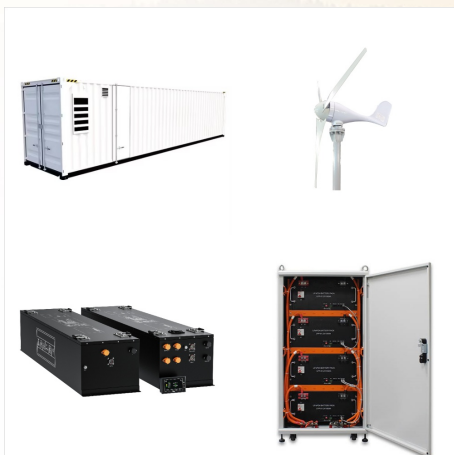
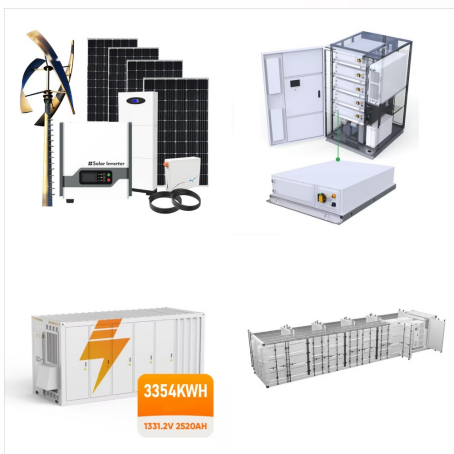




(? 1/4 ? Heard Island and McDonald Islands, ? 1/4  
? HIMI ),, 1947, 1997 (???) ??? HIMI 1600 ???



? 1/4 ?? 1/4 ? Heard Island and McDonald Islands, ?  
1/4 ? HIMI ? 1/4 ?, 1947 , 1997 ? 1/4 ????? 1/4 ????  
1600 ? 1/4 ? 1000, 3700



Heard & McDonald Islands Postcodes, ZIP Codes,  
Postal Codes information, The Heard & McDonald  
Islands is a country primarily located in Antarctica,  
The capital is Canberra. The numeric is 334 and dial  
code is +672. The postal system name in the  
country is Postcode, You can find out the postal  
code of each region from our website. We provide  
postal codes for 2 ???



# FLUX SOLAR HEARD AND MCDONALD ISLANDS



Flag of Heard and McDonald Islands At nearly the midpoint between Antarctica, Australia and Africa are the Heard and McDonald Islands. The islands were named after two different US American Captains. First Captain John Heard charted the islands on November 25, 1853. The next month and year later a UK ship under the command of William McDonald



? 1/4 ?? 1/4 ?Heard Island and McDonald Islands,?  
1/4 ?HIMI? 1/4 ?,1947,1997? 1/4 ????? 1/4  
????1600? 1/4 ?1000,3700,???80%, ???



Heard and McDonald Islands: A Comprehensive Guide for Tourists Table of Contents Introduction Geography and History 2.1 Heard Island 2.2 McDonald Islands Climate and Wildlife Travel Information 4.1 How to Get There 4.2 When to Visit 4.3 What to Pack Things to Do and See Safety and Regulations Tips for Responsible Travel Useful Resources 1. Introduction ???





Heard Island and McDonald Islands are located in the Southern Ocean, approximately 1,700 km from the Antarctic continent and 4,100 km south-west of Perth. As the only volcanically active subantarctic islands they "open a window into the earth", thus providing the opportunity to observe ongoing geomorphic



? 1/4 ?? 1/4 ?Heard Island and McDonald Islands,?  
1/4 ?HIMI? 1/4 ?,1947,1997? 1/4 ????? 1/4  
????1600? 1/4 ?1000,3700,???80%, ???



The Territory of Heard Island and McDonald Islands [2] [3] (HIMI; [4] ISO 3166 region code: HMD, HM, 334; [5]) is an Australian external territory comprising a volcanic group of mostly barren Antarctic islands, about two-thirds of the way from Madagascar to Antarctica.The group's overall land area is 372 km 2 (144 sq mi) and it has 101.9 km (63 mi) of coastline.



# FLUX SOLAR HEARD AND MCDONALD ISLANDS



The Territory of Heard Island and McDonald Islands (abbreviated as HIMI) are an Australian external territory and volcanic group of barren Antarctic islands, about two-thirds of the way from Madagascar to Antarctica. The group's overall size is 372 square kilometres (144 sq mi) in area and it has 101.9 km (63 mi) of coastline. Discovered in the mid-19th century, they have been ???



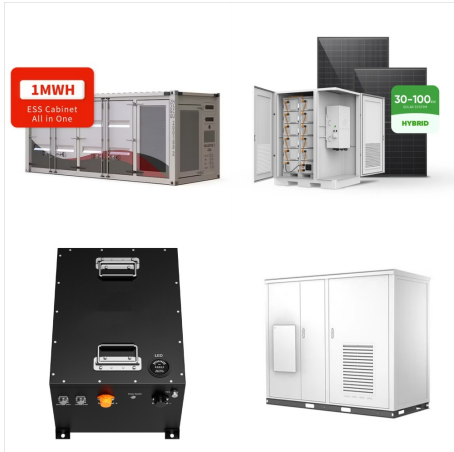
Many vascular plants are also found on the Heard and McDonald Islands. Elephant seals in Heard Island. Image source: Heard Island Expedition/laikolosse/Flickr. The main native fauna of the Heard and McDonald Islands include several insects along with large populations of seals, penguins, petrels, albatrosses, and other seabirds.



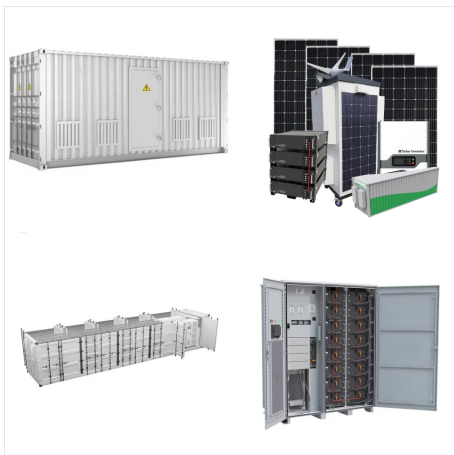
The Territory of Heard Island and McDonald Islands (HIMI; ISO 3166 region code: HMD, HM, 334;) is an Australian external territory comprising a volcanic group of mostly barren Antarctic islands, about two-thirds of the way from Madagascar to Antarctica. The group's overall land area is 372 km<sup>2</sup> (144



# FLUX SOLAR HEARD AND MCDONALD ISLANDS



The two small triangles are the McDonald Islands, mostly small rock islands and not nearly as impressive as Heard. I know that they probably are not as green as on the flag, but I simply didn't want to have grey on there. Lastly there's the southern cross from the Australian flag, following the lead of Christmas Island and the Cocos Islands.



Heard Island and McDonald Islands are uninhabited, barren, Subantarctic islands in the Southern Ocean, far due south of India and roughly 400 km southeast of Kerguelen of the French Southern and Antarctic Lands. The islands are administered by Australia and listed as a UNESCO World Heritage site. Although it's administered by Australia, the islands are approximately 4,000 ???



Underwater volcanic vents supply iron near McDonald Island, while glacial runoff supplies iron near Heard Island. Knowing these iron sources is essential for understanding what causes this ???



# FLUX SOLAR HEARD AND MCDONALD ISLANDS



The barren island of Heard and McDonald were once under the United Kingdom before it became a territory of Australia. The UK union jack flag is considered the only previous flag to have been used on the Heard and McDonald Islands. It was first hoisted on the island in 1910. Later on, in 1947, the island fell into Australian authority, and since



Vector images of flag of Heard Island and McDonald Islands available to free download. completely free for commercial and non-commercial use (public domain) based on vector file from Wikimedia Commons; SVG, PDF (Adobe Acrobat), AI (Adobe Illustrator) or EPS format; we appreciate backlink to <https://flagpedia>



Public consultation paper 1 Purpose of this document The Proposal to expand Heard Island and McDonald Islands Marine Reserve ??? Public consultation paper ("proclamation proposal") has been prepared to support public consultation on the proposed design of an expanded Heard Island and McDonald Islands (HIMI) Marine Reserve.



# FLUX SOLAR HEARD AND MCDONALD ISLANDS



? 1/4 ?Heard Island? 1/4  
?,,3800,2000,40,???1953,???1997?????????? ???



The Territory of Heard Island and McDonald Islands (HIMI) is an Australian external territory comprising a volcanic group of mostly barren Antarctic islands, about two-thirds of the way from Madagascar to Antarctica. The group's overall size is 372 km<sup>2</sup> (144 sq mi) in area and it has 101.9 km (63 mi) of coastline. Discovered in the mid-19th century, the islands lie on ???



L'isola Heard e le isole McDonald sono isole disabitate che si trovano nell'Oceano Antartico, a circa due terzi di distanza tra il Madagascar e l'Antartide. Esse costituiscono un territorio esterno australiano dal 1947 e contengono i due soli vulcani attivi presenti sul territorio australiano, uno dei quali (Mawson Peak) ? anche la montagna australiana pi? elevata, con 2.745 metri.



# FLUX SOLAR HEARD AND MCDONALD ISLANDS



The two small triangles are the McDonald Islands, mostly small rock islands and not nearly as impressive as Heard. I know that they probably are not as green as on the flag, but I simply didn't want to have grey on there. Lastly there's the ???



McDonald Island is much smaller (2.5 km<sup>2</sup>), about 100 000 years old and totally ice-free, and is predominantly composed of phonolitic rocks. 9, 10 During the campaign, signs of volcanic activity



Heard Island and McDonald Islands are located in the Southern Ocean, approximately 1,700 km from the Antarctic continent and 4,100 km south-west of Perth. As the only volcanically active subantarctic islands they "open a window into the earth", thus providing the opportunity to observe ongoing geomorphic processes and glacial dynamics.



# FLUX SOLAR HEARD AND MCDONALD ISLANDS



Heard Island is 43 km long and 21 km wide. McDonald Islands are a group of uninhabited rocky islets, 40 km west of Heard Island (Encyclopaedia Britannica 2006). Heard Island has approximately 362.5 km<sup>2</sup> of area and the McDonald Island, 2.6 km<sup>2</sup>. The site includes the adjacent offshore rocks and shoals and all territorial waters to a distance of 12 nautical ???



Flag of Heard Island and McDonald Islands: This Australian external territory does not have an official flag but is often represented by the flag of Australia, which is a blue field with the Union Jack in the canton, and a large white seven-pointed star below it, with five white stars in the shape



???-???? Heard Island and McDonald Islands  
Emoji; Download flag of Heard Island and McDonald Islands; Information about Heard Island and McDonald Islands. Sovereign State: No: Country codes: HM, HMD (ISO 3166-1) Official name: Heard Island and McDonald Islands: Population: 0 (2020) Total area: 412 km<sup>2</sup>:



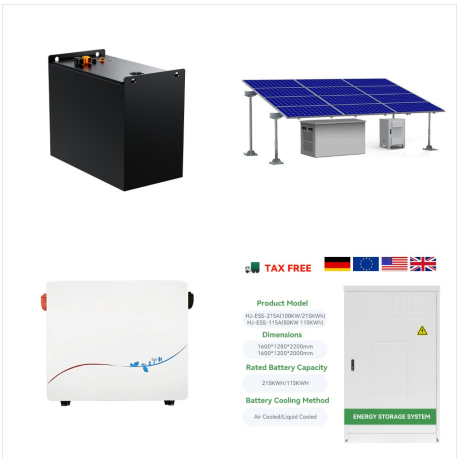
# FLUX SOLAR HEARD AND MCDONALD ISLANDS



The Territory of Heard Island and McDonald Islands [2] [3] (HIMI; [4] ISO 3166 region code: HMD, HM, 334; [5]) is an Australian external territory comprising a volcanic group of mostly barren Antarctic islands, about two-thirds of the way ???



Heard Island and McDonald Islands in the Southern Ocean A map of Heard Island and McDonald Islands. Heard Island, by far the largest of the group, is a 368-square-kilometre (142 sq mi) mountainous island covered by 41 glaciers [21] (the island is 80% covered with ice [1]) and dominated by the Big Ben massif has a maximum elevation of 2,745 metres (9,006 ft) at ???



Time for sunrise, sunset, moonrise, and moonset in Territory of Heard Island and McDonald Islands ??? Heard and McDonald Islands ??? Australia. Dawn and dusk (twilight) times and Sun and Moon position. Takes into account Daylight ???