

Can you carry a lithium ion battery on a plane?

Lithium-ion batteries, including those in laptops and power banks, are allowed but limited to 100 watt hours per battery, with the option to carry up to two larger 101-160-watt-hour batteries with airline approval. Lithium metal (non-rechargeable) batteries are permitted up to 2 grams of lithium per battery.

Can you bring a battery on a plane?

Requirements vary based on the type of device and size of battery. Spare (uninstalled) lithium metal batteries and lithium ion batteries, portable rechargers, electronic cigarettes and vaping devices are prohibited in checked baggage. They must be carried with the passenger in carry-on baggage.

What batteries are allowed in carry-on luggage?

Batteries allowed in carry-on baggage include: Dry cell rechargeable batteries such as Nickel Metal Hydride (NiMH) and Nickel Cadmium (NiCad). For rechargeable lithium ion batteries; see next paragraph. Lithium ion batteries (a.k.a.: rechargeable lithium, lithium polymer, LIPO, secondary lithium).

Can lithium batteries cause a fire on a plane?

Smoke and fire incidents involving lithium batteries can be mitigated by the cabin crew and passengers inside the aircraft cabin. If carry-on baggage is checked at the gate or planeside, spare lithium batteries, electronic cigarettes, and vaping devices must be removed from the baggage and kept with the passenger in the aircraft cabin.

Are batteries allowed in checked baggage?

Spare lithium metal and lithium ion/polymer batteries are prohibited in checked baggage--this includes external battery packs. Electronic cigarettes and vaporizers are also prohibited in checked baggage. "Checked baggage" includes bags checked at the gate or planeside. Q3. How do I determine the watt hours (Wh) rating of a battery? A3.

Can you carry a battery in a suitcase?

Check the FAA's Pack Safe website for the rules on carrying different types of battery-powered devices, such as luggage trackers, mobility aids, or personal electronics, and other dangerous goods in baggage. Lithium

FLYING WITH LITHIUM BATTERIES SOUTHWEST



batteries, which power everyday devices, can catch fire if damaged or if battery terminals are short-circuited.



ICAO Lithium Batteries on Planes Rules Civil Aviation Authority (CAA) and UK airline operators have restrictions on flying with certain types of batteries carried either on your person or in your baggage. Most battery-powered devices need to meet flight safety laws. They may also need approval by airport authorities before you can fly with them.??? Continue reading Lithium Ion ???



However, lithium-ion batteries that are between 101???160wh are allowed in carry-on bags only with prior airline approval." Whether you are planning on traveling with Delta, Southwest, United, JetBlue, American Airlines, or any other airline, you'll be pleased to know that all follow TSA regulations.



Size limits: Lithium metal (non-rechargeable) batteries are limited to 2 grams of lithium per battery. Lithium ion (rechargeable) batteries are limited to a rating of 100 watt hours (Wh) per battery. These limits allow for nearly all types of lithium batteries used by the average person in their electronic devices. With airline approval

FLYING WITH LITHIUM BATTERIES SOUTHWEST



We are happy to take care of your manual or battery-powered wheelchair or mobility aid during your travel. Due to the size of the aircraft cargo compartment doors (48 inches width x 35 inches height), some wheelchairs or mobility aids may not fit into the cargo compartment or may be required to be loaded on their side.



1. Why Do Airlines Not Allow Lithium Batteries On Planes? For fear of short-circuiting. Remember that Lithium batteries are fire hazards and can accidentally overheat and produce heat (thermal runaway). So, after approval, aviation authorities suggest carrying limited lithium batteries under safe flight measures, either as carry-on or checked



Tips for Traveling with Lithium-Ion Batteries. Tips for Traveling with Lithium-Ion Batteries. 1. Check the relevant regulations before packing Before heading to the airport, it is crucial to familiarize yourself with the regulations regarding lithium-ion batteries. These rules may vary depending on the carrier and airline you are flying with.

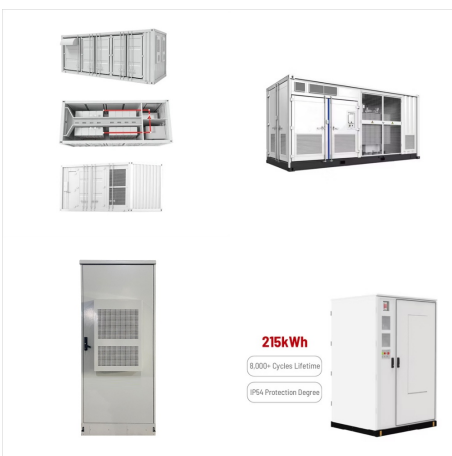
FLYING WITH LITHIUM BATTERIES SOUTHWEST



When it comes to flying with lithium batteries, it's important to know which types are allowed on flights. The Federal Aviation Administration (FAA) permits passengers to carry certain lithium batteries in their carry-on luggage. Lithium-ion batteries commonly used in devices like smartphones, laptops, and cameras are generally allowed in



The FAA has set specific limits for lithium batteries on airplanes. For lithium metal batteries, the limit is 2 grams of lithium per battery, while for lithium-ion batteries, the limit is 100-watt hours per battery. These limits cover most of the lithium batteries used in everyday electronic devices, including cameras. However, with airline



Each Customer is permitted up to a maximum of 15 PEDs and a maximum of 20 spare batteries per person. Power banks must be transported as carryon items only. Southwest Airlines will no longer accept smart bags (luggage) with non-removable (integrated) lithium batteries. The Customer must be able to easily remove the battery.

FLYING WITH LITHIUM BATTERIES SOUTHWEST



Southwest Airlines: Southwest Airlines permits lithium-ion batteries of up to 300 watt-hours in checked baggage. Like others, terminals must be protected. Traveling with lithium-ion batteries in carry-on luggage requires adherence to specific guidelines to ???



Per Southwest Airlines: Lithium Batteries Effective January 15, 2018, Southwest Airlines limits spare lithium-ion batteries to a maximum of 20 per person. Power banks, also known as portable chargers or external battery chargers, are ???

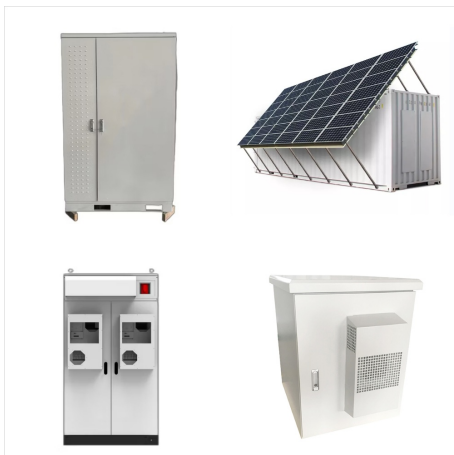


Southwest Airlines flight from Chicago to Miami was diverted due to smoke being detected onboard from a cell phone. 2 other similar incidents have occurred in the past six months with two other US carriers. Lithium-ion batteries, while ???

FLYING WITH LITHIUM BATTERIES SOUTHWEST



Watts all this talk about lithium batteries and why are they such a hot topic when it comes to flying? You might be shocked to learn that everyday items you pack in your travel bags contain lithium batteries that can cause cabin fires. Your cell phone, laptop, tablet, and smart watch all have lithium batteries and can be potential fire hazards.



You are welcome to use your portable oxygen concentrator (POC) during your flight if the POC is an approved model, is in its battery-operated mode, and you have enough fully charged batteries to cover no less than 150% of the expected maximum flight duration. We recommend carrying on at least one extra battery, provided the battery meets packaging criteria.



Tips for Traveling with Lithium Batteries. Traveling with lithium batteries doesn't have to be complicated if you keep these tips in mind: 1. Carry-On whenever possible: It's generally recommended to carry lithium batteries in your cabin baggage rather than in checked baggage. This way, you can keep an eye on their safe handling and prevent

FLYING WITH LITHIUM BATTERIES SOUTHWEST



Traveling with Vapes on Southwest Airlines. The good news is that you can still travel with your vape on Southwest Airlines, but there are some specific rules you need to follow: Carry-On Only:

E-cigarettes and vapes are not allowed in checked luggage due to safety concerns related to lithium batteries. You can, however, pack your vape in your



The SmartScoot??? electric mobility scooter meets Southwest Airlines and the Federal Aviation Administration (FAA) regulations for traveling with mobility scooters and lithium-ion batteries. The mobility scooter uses a lithium-ion (li-ion) battery rated at 288-watt hours, which is below Southwest's maximum of 300-watt hours for such batteries.

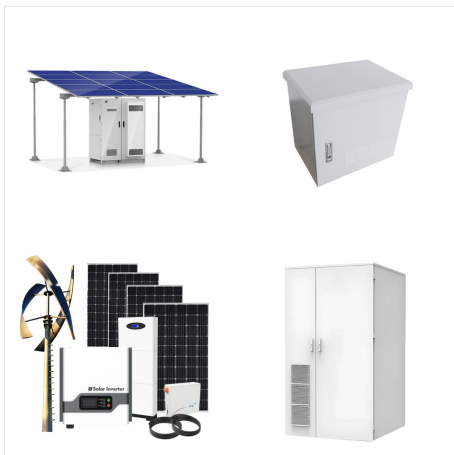


UN3090 Lithium Metal Batteries are FORBIDDEN on passenger aircraft per IATA/ICAO USG-02 and 49CFR, 173.185(c). UN3480 Lithium Batteries are prohibited per Southwest Airlines policy. Here are two additional resources to the specific regulations and/or guidance pertaining to the transportation of lithium batteries: 49CFR 173.185 Lithium cells and

FLYING WITH LITHIUM BATTERIES SOUTHWEST



The batteries in question are (usually) AA alkaline batteries for use in my underwater flashlights. I bring along extra batteries in an unopened package. I also have a small (900 mAh) Lithium Ion battery in my underwater video camera. My understanding is that this is allowed as long as it is inside the camera and inside my carry-on luggage.



This covers typical dry cell batteries, lithium metal, and lithium ion batteries for consumer electronics (AA, AAA, C, D, button cell, camera batteries, laptop batteries, etc.) Spare (uninstalled) lithium metal and lithium ion batteries are always prohibited in checked baggage and must be placed in carry-on.



Smart Luggage, Self-Propelled Luggage, Self-Riding, eBags, etc In the interest of safety for our guests and employees, only "Smart bags" (luggage with charging devices or use a lithium battery powered electric motor) with batteries/power banks that can be removed without the use of a tool (e.g. push button, connected to the bag via USB or similar connection, or ???

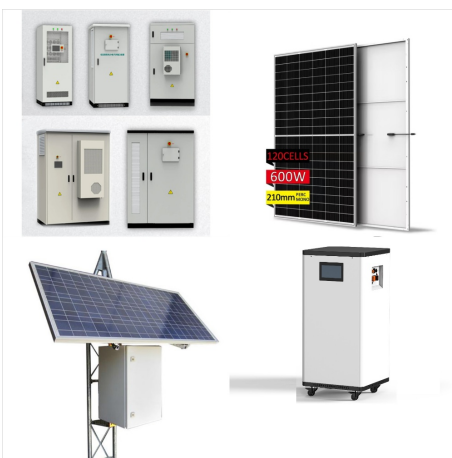
FLYING WITH LITHIUM BATTERIES SOUTHWEST



Lithium-ion batteries, including those in laptops and power banks, are allowed but limited to 100 watt hours per battery, with the option to carry up to two larger 101-160-watt-hour batteries with



This size covers larger extended-life laptop batteries. Most consumer lithium ion batteries are below this size. Lithium ion batteries that are between 101 ??? 160 wh are allowed in carry-on bags with airline approval. Lithium metal batteries (a.k.a.: non-rechargeable lithium, primary lithium). These batteries are often used with cameras and



If you are shipping lithium batteries please see shipping lithium batteries. Air travel restrictions revolve around: A Lithium-ion battery showing Watt-hour (Wh) rating on the case. The amount of lithium (or lithium equivalent) content in a battery or battery pack ??? this can be worked out as $0.3 \times \text{amp}$

FLYING WITH LITHIUM BATTERIES SOUTHWEST



Spare (uninstalled) lithium ion and lithium metal batteries, including power banks and cell phone battery charging cases, must be carried in carry-on baggage only. Lithium metal (non-rechargeable) batteries are limited to 2 grams of lithium per battery. Lithium ion (rechargeable) batteries are limited to a rating of 100 watt hours (Wh) per battery.



Flying with Lithium-Ion Batteries In each lithium-ion battery, there are two compartments that are separated by a thin piece of plastic. Now, if the two sides meet, that is what causes an explosion.