



Are flywheel energy storage systems environmentally friendly?

Flywheel energy storage systems (FESS) are considered environmentally friendly short-term energy storage solutions due to their capacity for rapid and efficient energy storage and release, high power density, and long-term lifespan. These attributes make FESS suitable for integration into power systems in a wide range of applications.

Can flywheel energy storage system array improve power system performance?

Moreover, flywheel energy storage system array (FESA) is a potential and promising alternative to other forms of ESS in power system applications for improving power system efficiency, stability and security. However, control systems of PV-FESS, WT-FESS and FESA are crucial to guarantee the FESS performance.

What is a flywheel energy storage system (fess)?

The operation of the electricity network has grown more complex due to the increased adoption of renewable energy resources, such as wind and solar power. Using energy storage technology can improve the stability and quality of the power grid. One such technology is flywheel energy storage systems (FESSs).

What is the difference between flywheel and battery energy storage system?

Compared to battery energy storage system, flywheel excels in providing rapid response times, making them highly effective in managing sudden frequency fluctuations, while battery energy storage system, with its ability to store large amounts of energy, offers sustained response, maintaining stability.

How does Flywheel energy storage work?

Flywheel energy storage (FES) works by accelerating a rotor (flywheel) to a very high speed and maintaining the energy in the system as rotational energy.

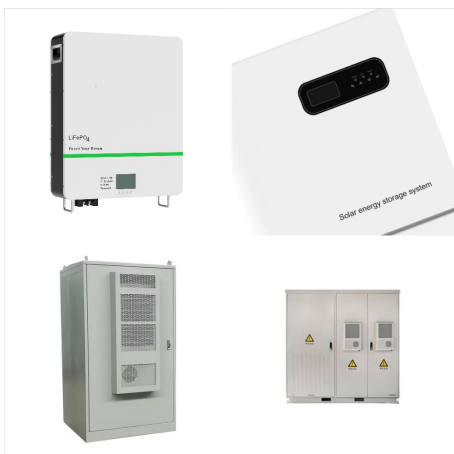
How much energy does a flywheel store?

Indeed, the development of high strength, low-density carbon fiber composites (CFCs) in the 1970s generated renewed interest in flywheel energy storage. Based on design strengths typically used in commercial flywheels, s_{max}/r is around 600 kNm/kg for CFC, whereas for wrought flywheel steels, it is around 75 kNm/kg.

FLYWHEEL ENERGY STORAGE BAHRAIN



In this paper, state-of-the-art and future opportunities for flywheel energy storage systems are reviewed. The FESS technology is an interdisciplinary, complex subject that involves electrical, mechanical, magnetic subsystems. The different choices of subsystems and their impacts on the system performance are discussed.



Flywheels, one of the earliest forms of energy storage, could play a significant role in the transformation of the electrical power system into one that is fully sustainable yet low cost. This article describes the major components that make up a flywheel configured for electrical storage and why current commercially available designs of steel



A Revolution in Energy Storage. As the only global provider of long-duration flywheel energy storage, Amber Kinetics extends the duration and efficiency of flywheels from minutes to hours-resulting in safe, economical and reliable energy storage.

FLYWHEEL ENERGY STORAGE BAHRAIN



6 ? The installed Flywheel Energy Storage Systems were designed to provide electricity by offloading a high-energy/low-power source. Flybrid Systems was purchased in 2014 by ???



The principle of rotating mass causes energy to store in a flywheel by converting electrical energy into mechanical energy in the form of rotational kinetic energy. 39 The energy fed to an FESS ???



Switzerland-headquartered battery and storage system provider Leclanch? emailed Energy-Storage.news this week to announce that what began as a small-scale pilot of the twinned technologies has now gone to grid part ???

FLYWHEEL ENERGY STORAGE BAHRAIN



A Revolution in Energy Storage. As the only global provider of long-duration flywheel energy storage, Amber Kinetics extends the duration and efficiency of flywheels from minutes to hours-resulting in safe, economical and reliable ???



This paper extensively explores the crucial role of Flywheel Energy Storage System (FESS) technology, providing a thorough analysis of its components. It extensively covers design specifications, control system design, safety measures, disc and bearing selections, and casing considerations. Moreover, it conducts a thorough analysis of flywheel losses, proposing ???

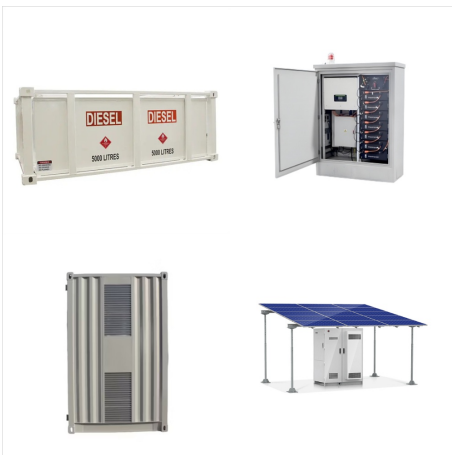


The multilevel control strategy for flywheel energy storage systems (FESSs) encompasses several phases, such as the start-up, charging, energy release, deceleration, and fault detection phases. This comprehensive approach guarantees the safety, efficiency, and effectiveness of the system during operation.

FLYWHEEL ENERGY STORAGE BAHRAIN



Flywheel energy storage is a promising technology for energy storage with several advantages over other energy storage technologies. Flywheels are efficient, have a longer lifespan, and ???



The main components of a typical flywheel. A typical system consists of a flywheel supported by rolling-element bearing connected to a motor???generator. The flywheel and sometimes motor???generator may be enclosed in a vacuum chamber to reduce friction and energy loss.. First-generation flywheel energy-storage systems use a large steel flywheel rotating on mechanical ???



Flywheel energy storage systems (FESS) are considered environmentally friendly short-term energy storage solutions due to their capacity for rapid and efficient energy storage and release, high power density, and long-term lifespan. These attributes make FESS suitable for integration into power systems in a wide range of applications.

FLYWHEEL ENERGY STORAGE BAHRAIN



Flywheel energy storage is a promising technology for energy storage with several advantages over other energy storage technologies. Flywheels are efficient, have a longer lifespan, and can provide fast response times to changes in power demand.