



Fossil fuels such as Coal, Oil and Gas are some of the most important natural resources that we use everyday. These fossil fuels are all Hydrocarbons, they are compounds formed from only two elements, Carbon and Hydrogen. Fossil fuels are non-renewable, this means that their supply is limited and they will eventually run out. Fossil fuels



Non-renewable energy resources are available in limited supplies, usually because they take a long time to replenish. The advantage of these non-renewable resources is that power plants that use them are able to produce ???



Non-Renewable Energy Sources Matthew R. Fisher and Editor. Fossil Fuels. Fossil fuels comes from the organic matter of plants, algae, and cyanobacteria that was buried, heated, and compressed under high pressure over millions of years. The process transformed the biomass of those organisms into the three types of fossil fuels: oil, coal, and natural gas.



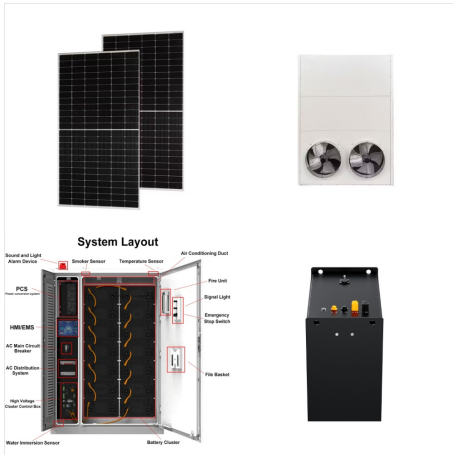
Non-renewable energy resources are available in limited supplies, usually because they take a long time to replenish. The advantage of these non-renewable resources is that power plants that use them are able to produce more power on demand. Fossil fuels are hydrocarbon-containing materials like coal or gas that are found in the Earth's



Nonrenewable Energy: Typically has a significant environmental impact, particularly fossil fuels, which are major sources of greenhouse gas emissions and pollution. 2. Cost: Renewable Energy: Initially high investment costs but low operational costs. The cost of technologies like solar and wind power is decreasing over time.



Like wood and biodiesel, fossil fuels are rich in carbon. But, fossil fuels are considered a type of non-renewable energy because they take millions of years to form. Here are examples of fossil fuels, their uses, and the problems associated with them. Fossil Fuel Examples and Uses. The three main types of fossil fuels are coal, oil, and



Types of Non-Renewable Resources. Fossil fuels include coal, oil, and natural gas. Modern society relies on fossil fuels for energy more than any other source. Millions of years ago, plants used energy from the Sun to form carbon compounds. These compounds were later transformed into coal, oil, or natural gas. Fossil fuels take millions of



Fossil fuels include coal, oil, and natural gas. Fossil fuels are the greatest energy source for modern society. Millions of years ago, plants used energy from the Sun to form carbon compounds. These compounds were later transformed into coal, oil, or natural gas. Fossil fuels take millions of years to form. For this reason, they are non-renewable.



According to the U.S. Energy Information Administration, non-renewable fossil fuels accounted for about 79% of total U.S. energy consumption in 2021, a clear indicator of how dependent we still are on these finite resources. As these stocks continue to deplete, we face increasing challenges in energy security and environmental sustainability.



Averaged across the relatively developed countries shown in Table 13.9, non-renewable fossil fuels and nuclear power account for 91% of the total use of energy. Renewable sources, such as hydroelectric, geothermal, solar, wind, and biomass fuels, account for only about 9%. With such a small reliance on non-renewable sources, it is clear that



Fossil fuels vs renewable energy: Which is best?
Posted on December, 05 2023. For example, under the fossil fuel scenario, the impacts of climate change, ocean acidification and pollution from fossil fuels result in four times the loss of nature ??? including species extinctions ??? compared with a clean energy transition.



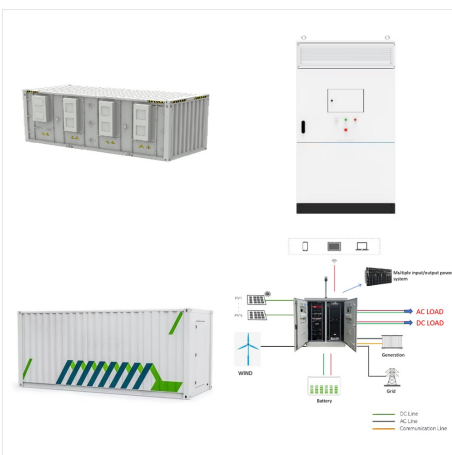
Most nonrenewable energy sources are fossil fuels: coal, petroleum, and natural gas. Carbon is the main element in fossil fuels. For this reason, the time period that fossil fuels formed (about 360-300 million years ago) is called the Carboniferous Period. All fossil fuels ???



Examples of nonrenewable resources include fossil fuels, oil, natural gas, and coal. The opposite of a nonrenewable resource is a renewable resource, one that is replenished naturally or can be



Wind energy was the source of about 10% of total U.S. utility-scale electricity generation and accounted for 48% of the electricity generation from renewable sources in 2023. Wind turbines convert wind energy into electricity. Hydropower (conventional) plants produced about 6% of total U.S. utility-scale electricity generation and accounted for about 27% of utility ???



Non-renewable energy resources are finite. They cannot be easily replaced on human timescales, and we are exploiting them faster than they are being made. There are two main types of non-renewable energy: fossil fuels and nuclear energy. Fossil fuels Most of the Earth's coal was formed in the Carboniferous period about



A: Fossil fuels are not renewable. Once we have used them all, they're gone. Our current infrastructure makes fossil fuels affordable, but as the supply is depleted the cost rises. The more we diversify our energy sources the more our supply will stabilize to meet demand in ways that do not require fossil fuels.



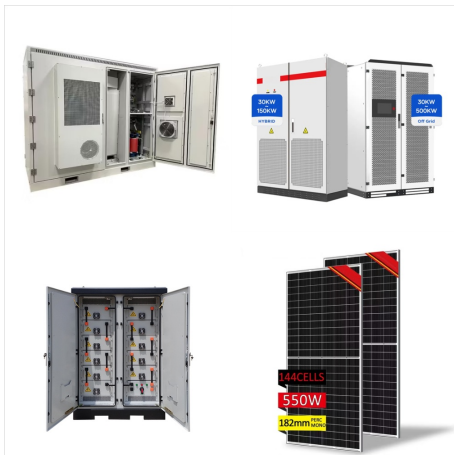
It does this by converting non-fossil fuel sources to their "input equivalents": the amount of primary energy that would be required to produce the same amount of energy if it came from fossil fuels. Approximately one-seventh of the world's primary energy is ???



All fossil fuels are nonrenewable, but not all nonrenewable energy sources are fossil fuels. Coal, crude oil, and natural gas are all considered fossil fuels because they were formed from the buried remains of plants and animals that lived millions of years ago. Uranium ore, a solid, is mined and converted to a fuel used at nuclear power plants.



There are two types of energy: renewable and non-renewable. Non-renewable energy includes coal, gas and oil. Most cars, trains and planes use non-renewable energy. They all get the energy to move



Due to the length of time it takes nature to form them, fossil fuels are considered non-renewable resources. In 2022, over 80% of primary energy consumption in the world and over 60% of its electricity supply were from fossil fuels. [6] The large-scale burning of fossil fuels causes serious environmental damage.



Fossil energy sources, including oil, coal and natural gas, are non-renewable resources that formed when prehistoric plants and animals died and were gradually buried by layers of rock. Over millions of years, different types of fossil fuels formed -- depending on what combination of organic matter was present, how long it was buried and what temperature and pressure conditions ???



Primary energy sources include fossil fuels (petroleum, natural gas, and coal), nuclear energy, and renewable sources of energy. Electricity is a secondary energy source that is generated (produced) from primary energy sources. Energy sources are measured in different physical unit: liquid fuels in barrels or gallons, natural gas in cubic feet



Fossil fuels are a finite, non-renewable natural resource unlike renewable energy resources such as wind, solar, biomass, geothermal and hydro-power [13,15,34]. Although the process of fossil fuel creation by natural forces took millions of years, reserves stored in the earth's surface will be exhausted within a 300-year period (1750 to 2050)



Averaged across the relatively developed countries shown in Table 13.9, non-renewable fossil fuels and nuclear power account for 91% of the total use of energy. Renewable sources, such as hydroelectric, geothermal, solar, wind, ???