



IP66 Floor Mounted Cabinet - 24RU Outdoor Cabinets (Grey, galvanized steel, 3-point locking) (Fits up to: Pylontech US2000 x 8, UP2500 x 8, US3000 x 6 + LV-HUB x 1) Requires Battery cabinet bracket to fit batteries in the cabinet SKU: IP-SD1206060/T1 DIMENSIONS: (mm) 1200 x 600 x 600 NOTE: \* Product images shown are



The UP5000 battery is a mid-range 48V battery that is ideal for daily cycling applications with a lifetime of over 4,500 cycles at a 95% depth of discharge. This battery also suits larger domestic applications as you can parallel up to 16 ???



La Batería Litio Pylontech 24V UP5000 4,8kWh es una avanzada batería de litio LPF preparada para ser utilizada en instalaciones fotovoltaicas, de uso residencial, comercial e industrial. Dispondrá de un sistema de almacenamiento de tecnología de Litio a un precio muy competitivo y con características técnicas muy atractivas. Se puede

# FRENCH POLYNESIA PYLONTECH BATTERY CABINET UP5000



Our 19inch server cabinets are ideal for this application as they provide a self-contained and secure cabinet for the Pylontech rackmount battery trays, providing a small footprint for domestic applications. For a typical ???



Our 19inch server cabinets are ideal for this application as they provide a self-contained and secure cabinet for the Pylontech rackmount battery trays, providing a small footprint for domestic applications. For a typical installation see this customer review from a client who used a 33U 600x600 server cabinet for their Pylontech installation.

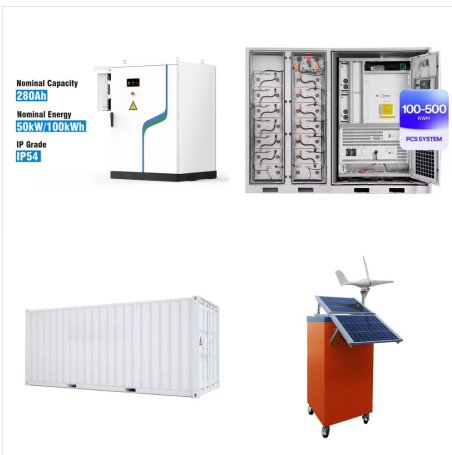


**Product Description** The UP5000 is a solar battery provided by Pylontech, It consists of a BMS that protects the cell from abnormal temperature, current, voltage, SoC and SoH. Compact size for space saving-Reliable performance -95% DoD with m

# FRENCH POLYNESIA PYLONTECH BATTERY CABINET UP5000



IP20 Floor Mounted Cabinet - 32RU Requires  
Battery cabinet bracket to fit batteries in the cabinet  
Indoor Cabinets (Black, in-built fans, castor wheels)  
SKU: 002.001.3260 DIMENSIONS: (mm) 1630 x  
600 x 600 WEIGHT: (kg) 79 ???



For housing for up to 2 x PylonTech UP5000  
Lithium-Ion batteries. New, upgraded cabinet  
specially redesigned for Pylontech batteries.  
Batteries slide into the cabinet on steel rails. The  
guide rails are correctly spaced to shorten ???



For housing for up to 3 x PylonTech UP5000  
Lithium-Ion batteries. New, upgraded cabinet  
specially redesigned for Pylontech batteries.  
Batteries slide into the cabinet on steel rails. The  
guide rails are correctly spaced to shorten ???

# FRENCH POLYNESIA PYLONTECH BATTERY CABINET UP5000



Advantages of the Pylontech US5000 battery.  
Optimum performance: LiFePO4 technology offers excellent energy density, long life and greater safety than other types of battery. Flexibility: The US5000 battery is modular, so you can adapt its capacity to your specific needs by adding extra modules.  
Reliability: Designed to withstand the toughest conditions, the ???



Pylontech Battery Cabinet - IP20 Floor Mounted Cabinet - 42RU (002.001.4260 ) Pylontech. Price: Sale price \$2,555.00 / Quantity: Add to cart . This item is a recurring or deferred purchase. French Polynesia (XPF Fr) French Southern Territories (EUR ???) Gabon (XOF Fr)



The UP5000 is a 48V, 4.8kWh lithium ion battery with incredible features to provide a competitive edge in the market. Product Features: Modular design for ease of expansion; Higher usable capacity resulting in less battery modules ???



# FRENCH POLYNESIA PYLONTECH BATTERY CABINET UP5000



Note that a Pylontech cable kit will be required to connect a single battery or battery bank to a inverter charger. Important Information: Please check the Pylontech compatibility guide to see if your inverter uses RS485 or Can Communication protocols. When using RS485 protocol, This Pylontech Battery can be connected in up to 6 strings of 16 batteries for a total of 96 US5000 ???



View and Download Pylontech UP5000 product presentation online. UP5000 camera accessories pdf manual download. ???varying amount depends on application. 2.External Cable kits???1 kit per 5kW installation. 3 ackets/Cabinets ???if necessary. US3000C battery cable connection diagram Figure 10: UP5000 battery cable connection diagram Page



Pylontech Battery (48v 4.8kWh) Li-Ion Solar Battery 48V is a great choice for residential and commercial use. The Pylontech UP5000 has been specifically designed to meet the ever-increasing demand for solar storage solutions that deliver clean and reliable power. Max discharge rate is only applicable for +- 60 seconds.

# FRENCH POLYNESIA PYLONTECH BATTERY CABINET UP5000



US5000-B is the latest and highest capacity version HESS battery system designed by Pylontech 's long life characteristics, highest energy and power density in the industry, fashionable design, easiness of installation and expansion, all reflect the real requirements of end users and the strong technical capability of Pylontech.. This compact and modular battery ???



Battery Cabinet For Hubble Lithium 51.2kWh HV R 32,539.00 R 18,289.00 / Low Stock (1) Add to Quick view. Interactive IT CC. Battery Rack for 2x Giter G2500 batteries or 1x Pylontech UP5000 R 6,329.00 R 2,529.00 / Add to cart View details. Sale Compare. Quick view. Interactive IT CC. Battery Rack for 2x UP5000 or 3x Giter G2500 Batteries R



Introducing the Pylontech UP5000, a state-of-the-art 48V 4.8kWh Lithium-ion Phosphate (LFP) battery designed for advanced energy storage. Combining high-end technology with robust functionality, the UP5000 is tailored for both residential and commercial applications that require reliable and efficient power management solutions.

# FRENCH POLYNESIA PYLONTECH BATTERY CABINET UP5000



Description UP5000 C Plus 48V 4,8KWh  
PYLONTECH Lithium battery. The new UP 5000 C 48V 2,4KWh Lithium battery series is a perfect solution for residential storage facilities, with STANDARD 48v/100AH specification, up to 90% usable capacity and a 4.5000 life-span warranty. Features: Vertical industry integration guarantees more than 6000 cycles with 90% DoD

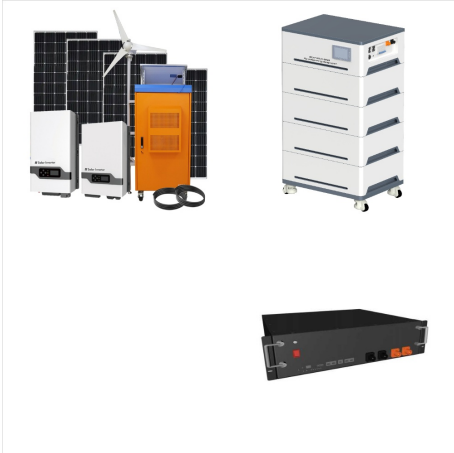


UP5000 is a new battery in the UP series from Pylontech. The UP5000 is a 48V battery with incredible features to provide a competitive edge . Compact Size for Space Saving; Reliable Performance; Vertical industrial Chain 95% DOD with more usable capacity; 10+ years technical proven; Modular design for expansion; Superior low failure rate

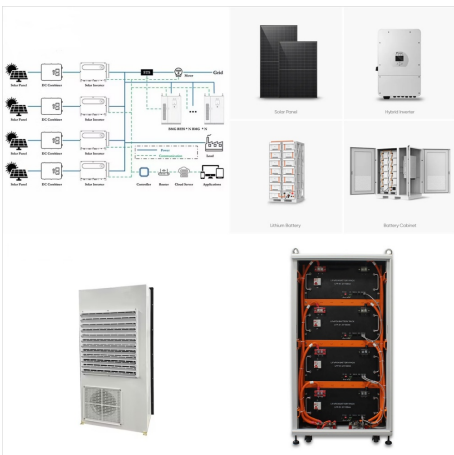


PYLONTECH UP5000 4.8KWH LI-ION BATTERY 48V. R 21,499.00 Original price was: R21,499.00. R 15,499.00 Current price is: R15,499.00. 4 in stock. Wall Mount Bracket. PYLONTECH UP5000 4.8KWH LI-ION BATTERY 48V quantity. Add to cart. Category: Solar Batteries. Description

# FRENCH POLYNESIA PYLONTECH BATTERY CABINET UP5000



UP5000 is a new battery in the UP series from Pylontech. The UP5000 is a 48V battery with incredible features to provide a competitive edge in the market. Key Features. Modular design for ease of expansion; Higher usable capacity ???



Pylontech Indoor Battery Cabinet for up to 10x US5000-B - RK2000 by Pylontech. \$1,945.00 | / Quantity Quantity Add to cart Whilst this cabinet is designed for the US5000 battery, it can also be used for the Pylontech US3000, H48074, US2000, H48050 & UP2500 modules as the interlink cables are long enough to reach the 4RU tray spacing.



The battery cabinet is for housing up to 4 x UP5000 Pylontech 4.8kwh Lithium-Ion batteries Dimensions assembled New, upgraded cabinet specially designed for lithium-ion batteries. Batteries slide into the cabinet on steel rails. The guide rails are correctly spaced to shorten installation time and improve installation neatness. Features



# FRENCH POLYNESIA PYLONTECH BATTERY CABINET UP5000



Intelligent BMS protecting battery cells. 95% DoD with more usable ca. Product Features Modular design for ease of expansion. Higher usable capacity resulting in less battery modules installed. Usable capacity 4 560Wh. Parallel Capability of up to 16 units. Pylontech UP5000 100Ah 4.8kWh 48V Li-Ion Battery - Sustainable



IP66 Floor Mounted Cabinet - 42RU Outdoor Cabinets (Grey, galvanized steel, 3-point locking) (Fits up to: Pylontech US2000 x 16, UP2500 x 14, US3000 x 10 + LV-HUB x 1) Requires Battery cabinet bracket to fit batteries in the cabinet SKU: IP-SD2006060/T1 DIMENSIONS: (mm) 2000 x 600 x 600 NOTE: \* Product images shown are



Introducing the UP5000 Ah Solar Batteries, a cutting-edge energy storage solution designed to meet the growing demand for sustainable and reliable power in South Africa. These high-capacity batteries are engineered to deliver exceptional performance and longevity, making them ideal for both residential and commercial solar power systems. With a robust 5.12kWh capacity, the ???

# FRENCH POLYNESIA PYLONTECH BATTERY CABINET UP5000



Rack Mount battery Wall Mounting Cabinet PRO -  
Black eg 4 X Pylontech US2000C or 2 x US3000C -  
550mmW x 550mmD - 9U. Price: ?154.17 +vat  
?185 (including VAT) Pay Monthly Finance - Apply  
NOTE - Battery stacking, weight of batteries needs  
to be supported by additional means, we  
recommend unistrut or angle on the sides or back.