

What does sunzil do in French Polynesia?

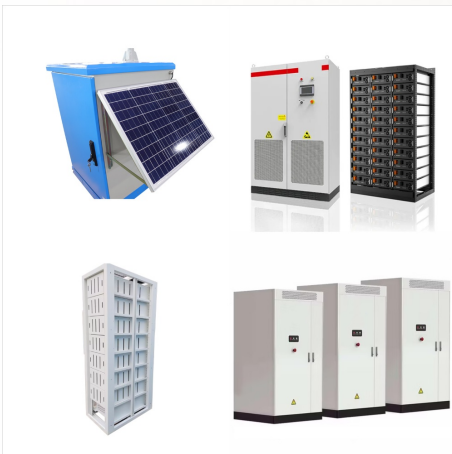
We are mainly active in French Polynesia through our retail and renewable electricity generation activities. We lead several community outreach initiatives in the country. In French Polynesia, our affiliate Sunzil operates small solar power plants in the B2B segment and markets subscription-based photovoltaic and solar thermal systems.

What does French Polynesia do?

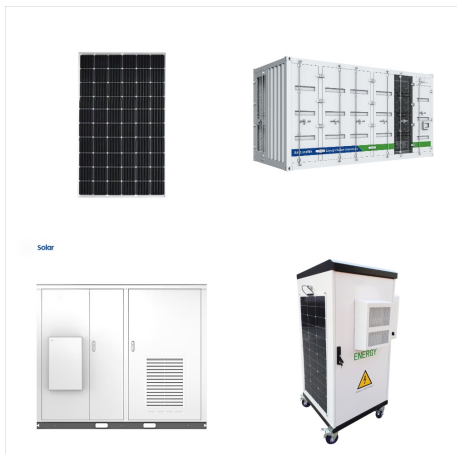
In French Polynesia, we own interests in several storage companies and depots. In French Polynesia, we retail lubricants and petroleum products to our business customers. In French Polynesia, we have a network of approximately 20 service stations, where we retail our fuel and products, and offer related services.

How many service stations are there in French Polynesia?

In French Polynesia, we have a network of approximately 20 service stations, where we retail our fuel and products, and offer related services. Join Us! Want to work in the energy industry?



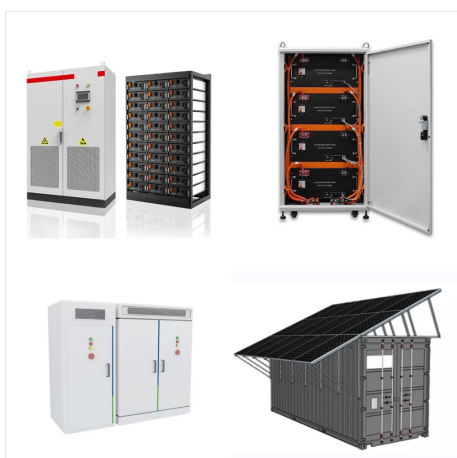
French Polynesia is located near a large body of water (e.g., ocean, sea, or large lake). This section reports on the wide-area average surface temperature of that water. The average daily incident shortwave solar energy in French Polynesia is essentially constant during January, remaining within 0.1 kWh of 5.7 kWh throughout.



Through the links below you can access detailed information about how the Total Solar Eclipse will be visible from the major cities of French Polynesia: Faaa; Mahina; Paea; Papao; Papeete; Pirae; Punaauia; Browse Solar Eclipses. Select a decade to visualize all the solar eclipses happening in the selected time interval: Upcoming; 1900-1909; 1910



The solar day over the course of the year 2024. From bottom to top, the black lines are the previous solar midnight, sunrise, solar noon, sunset, and the next solar midnight. The day, twilights (civil, nautical, and astronomical), and night are indicated by the color bands from yellow to gray. French Polynesia is located near a large body



Distance from French Polynesia to Virgin Islands is: 10,049 kilometer : Distance from Papeete to Charlotte Amalie: Mid: Distance from French Polynesia to Trinidad and Tobago is: 10,136 kilometer : Distance from Papeete to Port-of-Spain: Mid: Distance from French Polynesia to Grenada is: 10,158 kilometer : Distance from Papeete to Saint George's

FRENCH POLYNESIA SOLAR NEAR ME



French Polynesia is located near a large body of water (e.g., ocean, sea, or large lake). This section reports on the wide-area average surface temperature of that water. The average surface water temperature in French Polynesia is essentially constant during May, remaining within 1°F of 82°F throughout.



Be aware that everything is very expensive here in this part of the world. A month of traveling in French Polynesia cost me more than 4 months of traveling around in south-east Asia. While it's possible to do it fairly cheap, ???

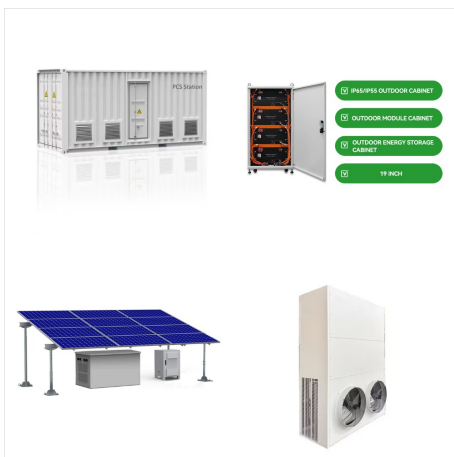


French Polynesia is located near a large body of water (e.g., ocean, sea, or large lake). This section reports on the wide-area average surface temperature of that water. The average daily incident shortwave solar energy in French Polynesia is gradually increasing during August, rising by 0.8 kWh, from 5.0 kWh to 5.8 kWh, over the course of

FRENCH POLYNESIA SOLAR NEAR ME



The solar day over the course of the year 2019. From bottom to top, the black lines are the previous solar midnight, sunrise, solar noon, sunset, and the next solar midnight. The day, twilights (civil, nautical, and astronomical), and ???



The Tetamanu Dive shop is run by Eleuthra Divers, which has many dive shops throughout French Polynesia. They were professional, safe, and knowledgeable. Top Dive also has an operation in the area. Water temperatures were 81-82 deg.F., ???



French Polynesia All Inclusive Resorts: Find 403 traveller reviews, candid photos, and the top ranked All Inclusive Resorts in French Polynesia on Tripadvisor. California is a fertile, peaceful place where you'll find a near-equal balance of vineyards and deserts, beaches and mountains, hippies and traditionalists. Catch an epic wave in



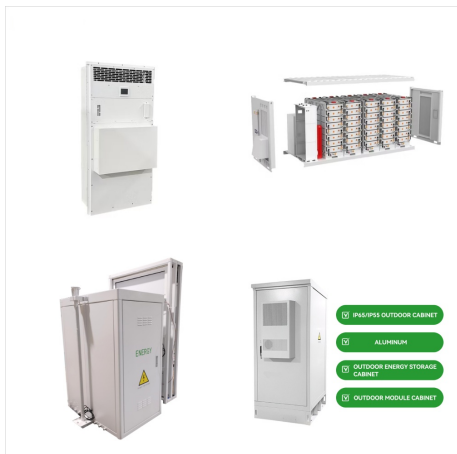
Top Attractions in French Polynesia. See all. These rankings are informed by Tripadvisor data???we consider traveller reviews, ratings, number of page views, and user location. 2024. 1. Plage de Matira. 1,568. Beaches. Public beach with crystal clear turquoise waters ideal for snorkeling and lounging on white sand. Features dining options and



French Polynesia COUNTRY INDICATORS AND SDGS TOTAL ENERGY SUPPLY (TES) Total energy supply in 2021 Renewable energy supply in 2021 92% 8% Oil Gas Nuclear Coal + others Renewables 65% 0% 25% 11% Solar PV: Solar resource potential has been divided into seven classes, each representing a range of annual PV output per unit of capacity



Properties for sale in French Polynesia . 1 to 10 out of 61 properties. View Property. Tahiti ??? Apartment T4 VEFA with View. Bedrooms. 3. Shower room(s) 1. Area. 114 m?. Sale. 74 900 000 XPF . By Elise Lovely House Near the Sea.



French Polynesia is located near a large body of water (e.g., ocean, sea, or large lake). This section reports on the wide-area average surface temperature of that water. The average daily incident shortwave solar energy in French Polynesia is increasing during the winter, rising by 1.4 kWh, from 4.4 kWh to 5.8 kWh, over the course of the



French Polynesia, renowned for its breathtaking landscapes and vibrant culture, offers potential allure to high-net-worth investors seeking a second residency or citizenship by investment. As an overseas collective of France, it benefits from stable governance and infrastructure. Investment opportunities exist in tourism, pearl farming, and



French Polynesia is located near a large body of water (e.g., ocean, sea, or large lake). This section reports on the wide-area average surface temperature of that water. The average surface water temperature in French Polynesia is essentially constant during March, remaining around 84°F throughout.

FRENCH POLYNESIA SOLAR NEAR ME



French Polynesia is located near a large body of water (e.g., ocean, sea, or large lake). This section reports on the wide-area average surface temperature of that water. The average daily incident shortwave solar energy in French Polynesia is gradually decreasing during the summer, falling by 0.7 kWh, from 6.2 kWh to 5.5 kWh, over the



"French Polynesia" is also interchangeably called "Tahiti". Tahiti has 5 main archipelagos : The Society islands, the Tuamotus, The Marquesas, The Austral islands and the Gambier islands. The most popular island group is the Society ???

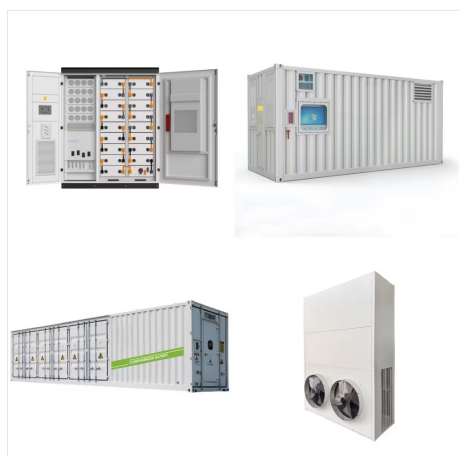


Travel advice. Stay up to date with the Australian travel advice for French Polynesia on Smartraveller and the Canadian travel advice for French Polynesia. You can monitor news on our Facebook page at L'Australie en Polynesie Francaise.. Visas for France and French Polynesia. Regarding foreign visa enquiries, please note every country or territory decides who can enter ???

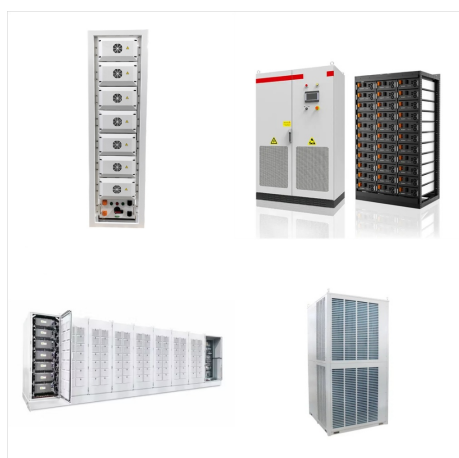
FRENCH POLYNESIA SOLAR NEAR ME



Alternative itinerary for two weeks in French Polynesia: keep the beginning of the previous itinerary (e.g. Tahiti, Moorea, Maupiti, Taha'a), but opt for 4/5 days in the Marquesas (4 hours flight) instead of the Tuamotus.



French Polynesia is located near a large body of water (e.g., ocean, sea, or large lake). This section reports on the wide-area average surface temperature of that water. The average surface water temperature in French Polynesia is essentially constant during June, remaining within 1°F of 81°F throughout.

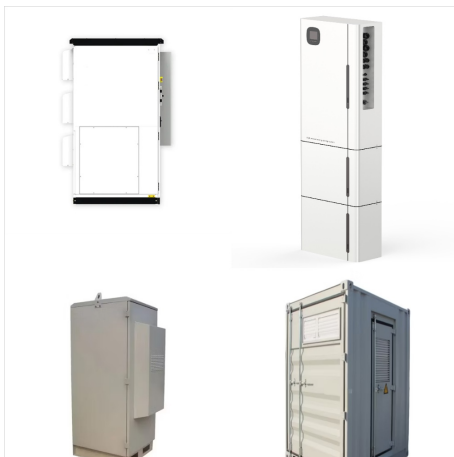


Total Solar Eclipse: Local Type: Partial Solar Eclipse, in French Polynesia: Start of Partial: Mon, Apr 8, 2024 at 5:42 am TAHT: Start of Totality: Not visible from French Polynesia: End of Totality: Not visible from French Polynesia: End of Partial: Mon, Apr 8, 2024 at 8:16 am MART: All times shown on this page are local time.

FRENCH POLYNESIA SOLAR NEAR ME



French Polynesia is located near a large body of water (e.g., ocean, sea, or large lake). This section reports on the wide-area average surface temperature of that water. The average daily incident shortwave solar energy in French Polynesia is gradually increasing during July, rising by 0.5 kWh, from 4.4 kWh to 5.0 kWh, over the course of



December Weather in Tahiti French Polynesia. Daily high temperatures are around 86°F, rarely falling below 83°F or exceeding 89°F.. Daily low temperatures are around 76°F, rarely falling below 73°F or exceeding 79°F.. For reference, on March 25, the hottest day of the year, temperatures in Tahiti typically range from 77°F to 88°F, while on August 1, the coldest day of ???