



What is energy storage multiblock draconic evolution?

The Energy Storage Multiblock is a multiblock power generation structure added by the mod Draconic Evolution. It uses Draconium and Redstone blocks power to store immense amounts of Redstone Flux, up to 2.14 TRF (unlimited in new versions of the mod).

What is energy storage multiblock?

The Energy Storage Multiblock consists of Energy Core at the center surrounded by 4 particle generators that must be directly in line with the core and be placed no longer than 10 blocks from the Core. The core is then surrounded with Redstone and Draconium blocks. Allowed setups are shown at the right: No redstone or draconium blocks, 45.5 MRF max

What is the Energy Core Stabilizer?

The Energy Core Stabilizer is a block added by Draconic Evolution. It is used to store energy when used in conjunction with a Draconic or Wyvern Energy Core. This item is also a component of the Energy Core (Draconic Evolution) multiblock. Community content is available under CC BY-NC-SA unless otherwise noted.

What is the structure of Energy Core Tier 5?

Energy Core tier 5 and above instead require Stabilizers to be placed in a 3x3 square at each point instead. The structure is 1x1x1 (not counting the Stabilizers) and requires (on top of the Core): The structure consists solely of the Energy Core block.

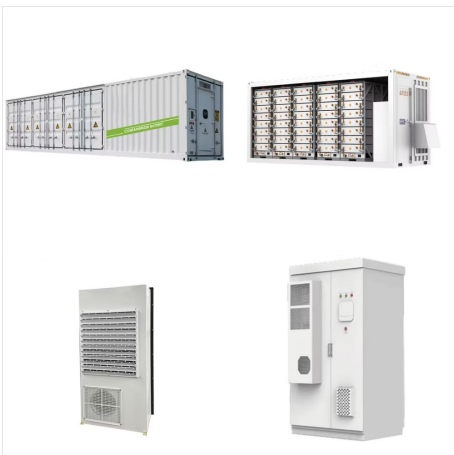
How do you fill a Tier 8 core?

For the tier 5 core to be copied, you have to deactivate them, as well as the stabilizer rings. And that my friends, is how you can fill your Tier 8 core. You just have to build a lot of alvearies and connect them to your Energy storage.

# FTB INFINITY EVOLVED TIER 8 ENERGY STORAGE MULTIBLOCK



I play on an infinity evolved factions server and I am in need to tips for making a storage system. My current system is an EnderStorage ender chest that we send all our items into from ender pouches, and then a long system of chests and hoppers. Yeah, not the best.

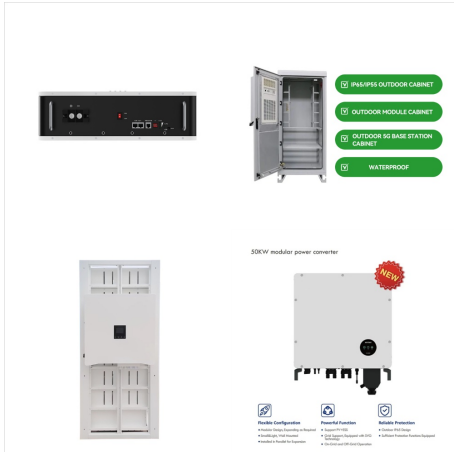


No, the altar tiers have next to nothing to do with lp capacity. To improve your capacity you will need to add runes of augmented capacity. And yes, you need more LP than you can store for the tier 3 blood orb.



Obligatory new to ATM6, What is the best energy storage multiblock in the pack? I want to know what I should be building towards. My group played through FTB Infinity last year and we were using the Draconic Evo Energy Core as our centralized power storage. I was wondering if there was anything similar.

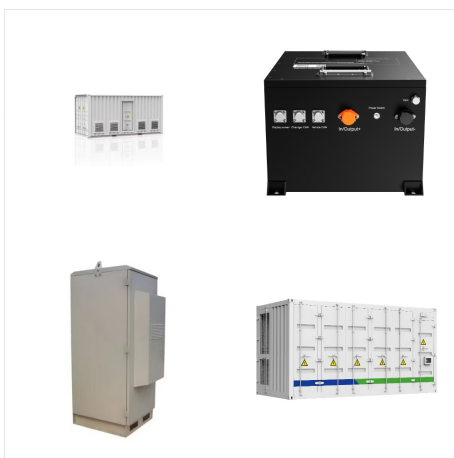
# FTB INFINITY EVOLVED TIER 8 ENERGY STORAGE MULTIBLOCK



I stepped my power generation straight from an Ender IO Stirling Generator to a Big Reactor, and I'm currently trying to build Draconic Evolution's Energy Storage Multiblock at as high a tier as possible. Just go into it with no strict path in mind. Try stuff you've never tried before. There is only one guide for Infinity - have fun.



the multiblock power generator in PO3 kappa mode fills a Tier 8 draconic evolution energy storage multiblock in a single tick. It's harder to come up with a way to transfer that amount than it is to create it and store it. I think i made like 10m/t from solar panels and like 1.5m/t from a big reaktor combined in ftb infinity evolved back then



And while I'm on the subject. my goodness, the Energy Storage Multiblock requires an almost unimaginable amount of Draconic Ore. I'm up to Tier 5 but probably need to quarry about another 100x100 chunks just to get enough of the stuff to make it ???

# FTB INFINITY EVOLVED TIER 8 ENERGY STORAGE MULTIBLOCK



Tier: Draconic. RF Cost: 9,000,000 RF. Deprecated  
? ? ? ? ? ? ? Feed The Beast Infinity Evolved  
Expert Mode ? ? ? ? ? ? ? ? Draconic Reactor  
??? Energy Net ??? Energy Storage Multiblock.  
Miscellaneous. Tool & Armor Config GUI. Mobs.  
Chaos Guardian.



Well, if you have many months of dedication and  
free time I think you can. it's definitely not easy.  
automation with AE is a necessity, I recomend you  
make a beeline for that controller. start growing  
some crystal seeds right now if you haven't started  
already, and go to the runic dungeons to get the  
iridium. as for how to automate with AE, non-crafting  
recipes are tricky, but at ???

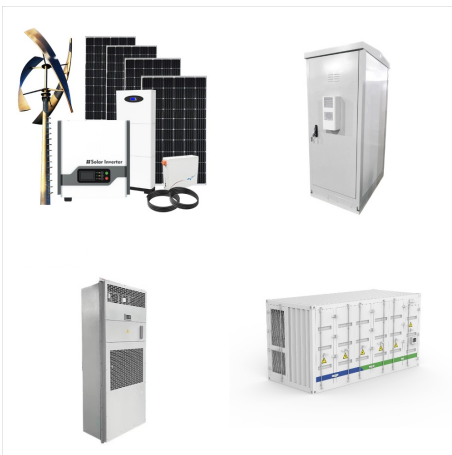


FTB infinity evolved DE energy storage problem .  
I've just built the DE energy storage multiblock and  
I've watched tutorials and everyone is just clicking  
on the particle blocks and getting a GUI to interact  
with the energy core. When I do it nothing happens.  
I can turn it on by shift right clicking but I can't turn it  
off, I can't find any way

# FTB INFINITY EVOLVED TIER 8 ENERGY STORAGE MULTIBLOCK



Once you have decent power gen and enough storage, look at building a quarry. Ender quarry was my go to in the infinity evolved pack. Send all items and energy to and from your base with the tesseract. Watch playthroughs to help you out along the way. I watched hypnotizd's play through of infinity evolved on .



Main article: Energy Core (Draconic Evolution) For technical reasons the template to build the tier 8 Energy Core is on this separate page. The structure is 13x13x13 (not counting the Stabilizers) and requires (on top of the Core): 36 Energy Core Stabilizers 786 Draconium Blocks 378 Awakened Draconium Blocks



On the FTB legacy launcher the latest version of GTNH I can find is 2.0.5.1. Will updates be coming to the legacy FTB launcher? -Tier 8 Rocket is Impossible to Obtain #4267-re-configured Quantum Voltage to IV-removed unnescarry,new Object[0] for varargs methods Infinity catalyst + UV Tier? There's no quests for those either.



# FTB INFINITY EVOLVED TIER 8 ENERGY STORAGE MULTIBLOCK



The MFSU, also known as MFS Unit or Multi-Functional Storage Unit, is a third tier device for storing IndustrialCraft 2 EU power. If you're using the GregTech mod, then the next tier of energy storage is the Adjustable Energy Storage Unit (AESU) or the multiblock Lapotron Energy Storage Unit (LESU). The MFSU can store up to 10,000,000 EU, the equivalent of ~17 MFEs ???



A nuclear reactor is a multiblock structure that is used to generate power for the IndustrialCraft 2 mod. Nuclear reactors can be as small as a single block and scale up to a 5x5x5 structure for Fluid Reactors. Equipping the Hazmat Suit is necessary to avoid radiation damage while holding radioactive items. Radioactive Items include all the Fuel Rods, Depleted Fuel Rods, ???

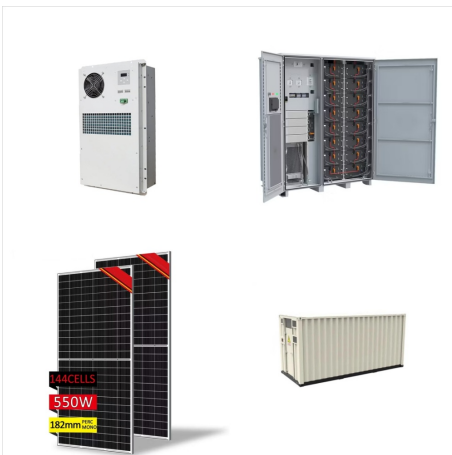


Draconic Core is an item added by the Draconic Evolution mod. It can be used as a crafting component to create other items from the mod. The item also has the ability to stabilize Monster Spawners, turning them into Stabilized Mob Spawners. This is done by simply using the Draconic Core on a Monster Spawner block.

# FTB INFINITY EVOLVED TIER 8 ENERGY STORAGE MULTIBLOCK



TE energy cells, or Mek energy cubes. Duh. They both seem pretty much the same to me except Mek cubes can transfer it to multiple energy types and instantly charge Powersuits. This seems like a silly question to me since you are already using Mekanism, the answer should be obvious.



The next step: Harvesting this energy. The easiest way is to just place the alveary above your Tier 8 core and use an energy pylon on the bottom alveary side. Test picture from a creative Singleplayer world: My Setup in the end: In the picture you can see I ???

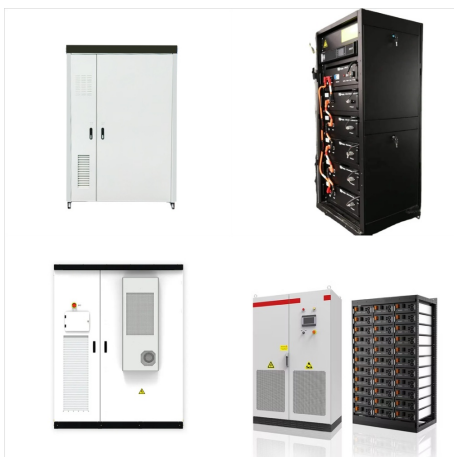


I started off with the tier 3 storage multiblock because that's what got me past my storage size from other mods. I just upgraded to tier 4, and the pylons are still reading the tier 3 numbers when I look at them. I slapped a comparator on one of them, and it seems to be outputting the right

# FTB INFINITY EVOLVED TIER 8 ENERGY STORAGE MULTIBLOCK



Applied Energistics 2 is a mod that focuses on creating a compact, easily accessible, considerably extendible storage system called an ME Network. The "ME" in the title stands for "Matter <-> Energy" -- the premise being that items added to the system are converted into energy and stored in a digital form before needing to be used again, whereupon they are converted back into matter.



Title: What is the best energy storage? Launcher Version: v1.4.11 Modpack: FTB Infinity Evolved Modpack Version: v2.3.5 Log Link: Details of the issue: I am planning in the test world to after put in the survivor world a reactor of Big Reactors that produces a good amount of energy to i never



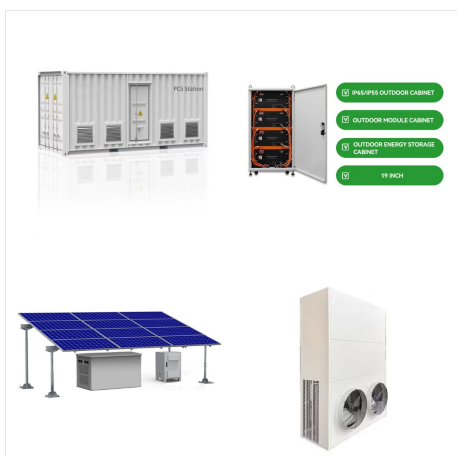
Small note: Logistics pipes doesn't seem to understand ore dictionary from my playing with it. Also, Storage Drawers, GET THEM Compacting drawers and the drawer controller are a fantastic combination for storage of block/ingot/nugget items, as the drawers will automatically convert between the 3 for you (put a block of iron in, if you punch the nugget on the drawer it will come ???)



# FTB INFINITY EVOLVED TIER 8 ENERGY STORAGE MULTIBLOCK



Feed the Beast Infinity Evolved: Power transfer question. My current setup has one tesseract for each pair of BR turbines, transmitting power to a draconic energy storage multiblock, which transfers back into a tesseract on a different channel so that all of my power input is buffered, and inside the base the tesseract uses one hyper energy



Since the containment field is indirectly powered via the Reactor Energy Injector, it's essential to maintain a constant supply of power to the injector. The energy output, load placed on the containment field, and the fuel usage rate is directly dependent on the heat of the reactor, which rises as more energy is drawn from the reactor.



Draconic Evolution is a mod that introduces high powered and efficient weapons, tools, armour, machinery, storage units, rituals, research and more. All items and blocks of the mod are highly dependent on Draconium Ore (which generates within the Overworld and Nether, but most commonly in The End) as well as Redstone Flux for energy. Many items come in two or more ???

# FTB INFINITY EVOLVED TIER 8 ENERGY STORAGE MULTIBLOCK



The Energy Core Stabilizer is a block added by Draconic Evolution. It is used to store energy when used in conjunction with a Draconic or Wyvern Energy Core. This item is also a component of the Energy Core (Draconic Evolution) multiblock.



AE networks are basically 1 big multiblock -Extra utilities warping pipes are basically a multiblock -Logistics pipe networks are basically a multiblock -Double chests -Nether portal -Division Sigil ritual -Storage drawers with a controller can be considered a multiblock -The Wither -End Portal and Nether Portal



The Macerator is a machine in IndustrialCraft 2 that is used to crush Ores into Dusts. Typically, one Ore Block can be macerated into two Dusts, which can each be processed into an Ingot, effectively doubling the yield of the Ore. Additionally, the Macerator will increase the amount of Bone Meal and Blaze Powder received from Bone and Blaze Rods. The Macerator is also used ???

# FTB INFINITY EVOLVED TIER 8 ENERGY STORAGE MULTIBLOCK



Energy Storage: This shows you how much energy is currently in the turbines energy storage buffer. It is capable of storing up to 1,000,000 RF. Any excess energy will simply be wasted. Max Flow Rate: Displays the flow rate of steam in milliBuckets per tick. Use the Up and Down arrows to adjust the max flow rate, left click once for +/- 1mB