

Are CommScope outdoor distribution cabinets FTTH compatible?

CommScope outdoor fiber distribution cabinets are uniquely adaptable to almost any FTTH need, and we're eager to work with you to build effective solutions, both for today and for the future.

What is a fdh-288 cabinet?

The FDH-288 cabinet houses optical splitters that propagate optical signals from the Headend or Central Office (CO) to the distribution cable network that serves fiber to the customer's premises.

What is a small outdoor fiber distribution cabinet?

Small outdoor fiber distribution cabinets are often used as the last distribution hub, connecting the network directly to homes with microducts or drop cables. These cabinets are also used as the secondary node in blown fiber access deployments. Drops are installed when the customer requests service.



CommScope outdoor fiber distribution cabinets are uniquely adaptable to almost any FTTH need, and we're eager to work with you to build effective solutions, both for today and for the future. Our selection is not limited to off-the-shelf items???once we



LongXing high density cabinet has a combination of Ming Series HD modules and Multi-splitter cassette. The Ultra HD, make the most of limited space. Terminates up to 72 SC or 108 LC ports within 1U space by using Ming series HD modules.



PPC FTTx Outdoor Series Fiber Distribution Cabinets are ideal to support any fiber network. Our FTTx cabinets are fully customizable using open source components, and come in sizes from 14U to 30U. Available pre-stubbed and fully integrated, see how Splice & Play cabinets can reduce costs and increase your speed to revenue.



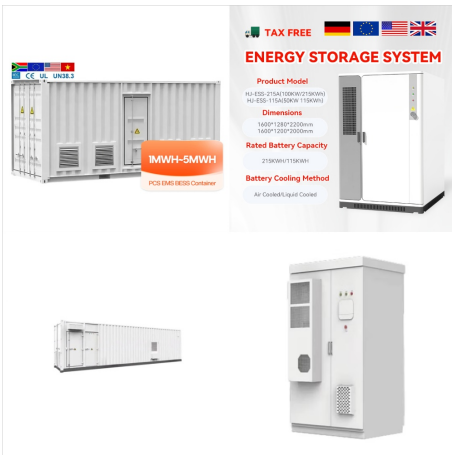
It was made of high-quality steel sheet metal and all surface paint. Effective sealing performance, dust and water proof: IP65. Supporting suitable module, high capacity from 96cores to 144cores, cross-connection structure. Front door and wall mount installation designed. Perfect fiber route design to ensure the bending radius of cable. Compatible with different fiber optic connector ???



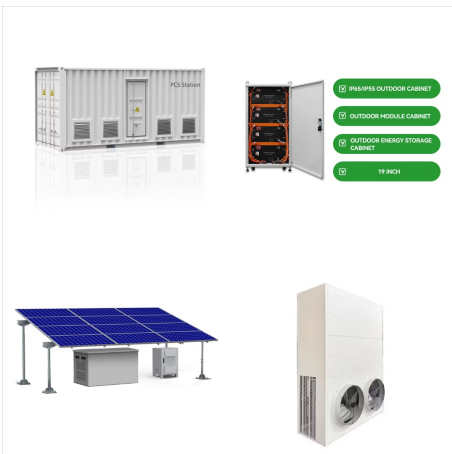
Over 20 years of experience in delivering customized one-stop solutions: Product Modification, Completely New Product, Indoor & Outdoor, Climate Controlled, Cabinets & Enclosures & Shelters, and Accessories.



The Connect Fiber FDH-288 Series Fiber Distribution Hub FTTH outdoor cabinet is designed to provide a local convergence point (LCP) in an Outside Plant (OSP) environment. The FDH-288 cabinet houses optical splitters that propagate ???



Features ? Serves up to 576 end users? High strength glass-fiber polyester (SMC)? Front and rear lockable doors? Exchangeable rack-mounted module design? Waterproof and dust-proof with IP65 level? Clean and easy to follow fiber routing? In-cabinet splicing, no splicing in manhole



Over 20 years of experience in delivering customized one-stop solutions: Product Modification, Completely New Product, Indoor & Outdoor, Climate Controlled, Cabinets & Enclosures & Shelters, and Accessories.



It was made of high-quality steel sheet metal and all surface paint. Effective sealing performance, dust and water proof: IP65. Supporting suitable module, high capacity from 96cores to 144cores, cross-connection structure. Front ???



Over 20 years of experience in delivering customized one-stop solutions: Product Modification, Completely New Product, Indoor & Outdoor, Climate Controlled, Cabinets & Enclosures & Shelters, and Accessories.



UNISOL Outdoor cabinets for Optical Line Terminals (OLTs) and Optical Networking Units (ONUs), fully integrated and ruggedized for outdoor installation with Weather proof and dust proof. Essential for enterprise, SOHO, and ???





The Connect Fiber FDH-288 Series Fiber Distribution Hub FTTH outdoor cabinet is designed to provide a local convergence point (LCP) in an Outside Plant (OSP) environment. The FDH-288 cabinet houses optical splitters that propagate optical signals from the Headend or Central Office (CO) to the distribution cable network that serves fiber to the



Features ? Serves up to 576 end users? High strength glass-fiber polyester (SMC)? Front and rear lockable doors? Exchangeable rack-mounted module design? Waterproof and dust-proof with IP65 level? Clean and easy to follow ???



UNISOL Outdoor cabinets for Optical Line Terminals (OLTs) and Optical Networking Units (ONUs), fully integrated and ruggedized for outdoor installation with Weather proof and dust proof. Essential for enterprise, SOHO, and residential Fiber-To-The-Curb (FTTC) and Fiber-To-The-Building (FTTB) access networking.