

Who is G2 energy solutions?

G2 Energy Solutions team members have worked on hundreds of buildings of all shapes and sizes in many different applications of energy consulting. We apply this experience and perspective to maximize our value to our clients on their projects. 1. Send us project information, and we'll create the energy model 2.

What does G2 energy do?

G2 Energy Corp. operates as a junior oil and gas producer in the United States. The company focuses on the acquisition and development of opportunities in the oil and energy sector. It holds a 100% interest in the Masten unit, a 2,600 acre project located within the Levelland Field in Cochran County, Texas.

Where is G2 Energy Holdings Limited based?

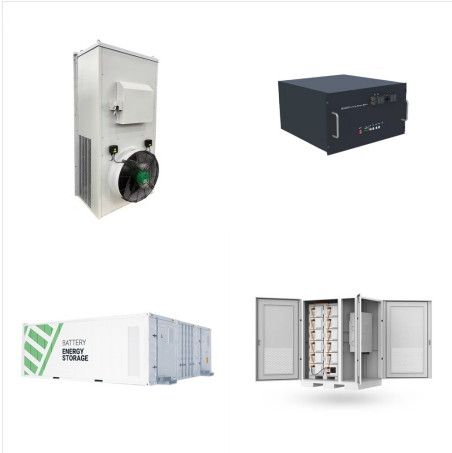
Registers for G2 ENERGY HOLDINGS LIMITED (11721887) More for G2 ENERGY HOLDINGS LIMITED (11721887) Registered office address 1 Osier Way, Olney, England, MK46 5FP Company status Active Company type Private limited Company Incorporated on 11 December 2018 Accounts

How good is G2 technology solutions?

Employees rate G2 Technology Solutions 4.4 out of 5 stars based on 198 anonymous reviews on Glassdoor. How can I get a job at G2 Technology Solutions? To get a job at G2 Technology Solutions, browse currently open positions and apply for a job near you.

Who is G2G solutions?

Welcome to G2G Solutions. We exist to provide you with high quality security solutions for any situation. We are excited to announce the implementation of School Safety Officers in two school districts. It is our goal to make schools safer for students and staff.



G2 Energy are able to design, build and install bespoke Container Solutions for both the Distribution Network Operator (DNO) Contestable Works and the Client's electrical infrastructure. As a Lloyds accredited Independent Connection ???



When the energy use is not lining up, something is out-of-sync. That is when further investigation is needed to correct the issues before they become a long-term cost. About Craig Green. Craig Green is the managing principal at G2 Energy Solutions, an energy engineering consulting firm based in Phoenix, Arizona.



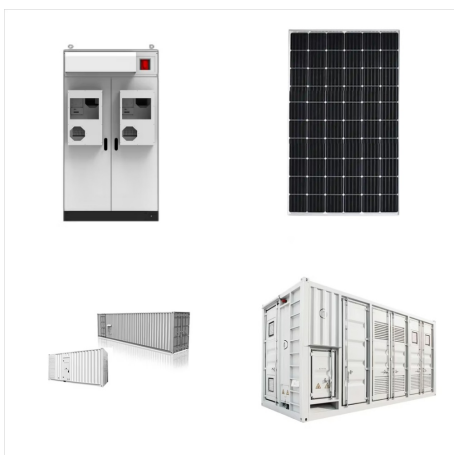
Contact G2 Energy Solutions today for a quote! About Craig Green. Craig Green is the managing principal at G2 Energy Solutions, an energy engineering consulting firm based in Phoenix, Arizona. Over the last decade, Craig has performed the energy modeling as well as other energy requirements on dozens of LEED certified projects.



The goal for any existing building study is to understand how a building currently uses energy, and what the opportunities and economic returns for improving the efficiency. There is often a big opportunity for reducing utility costs, especially in older buildings, and we can uncover and quantify those opportunities in a clear and unbiased fashion.



A common theme of these certifications is the need for quantification of the energy efficiency of the building, usually through an energy model. The G2 team has completed energy models for dozens of these types of projects, and have proven systems for ???



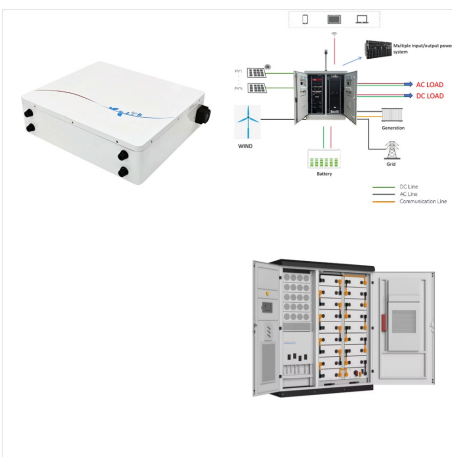
Richard started with G2 Energy in September 2022 as our Finance Director. With 30 years" experience within the construction industry, Richard has worked mainly across Tier 1 main contractors in regional and high value major project accountant roles and joins g2 following completion of a successful 3-year growth plan in a facades business where he was Finance ???



Contact G2 Energy Solutions today! About Craig Green. Craig Green is the managing principal at G2 Energy Solutions, an energy engineering consulting firm based in Phoenix, Arizona. Over the last decade, Craig has ???



In February of 2024, Craig Green of G2 presented at the February luncheon for the Association of Energy Engineers (AEE). Craig presented on updates to LEED v4 Energy Modeling guidelines and IECC 2021 It was a great opportunity to ???



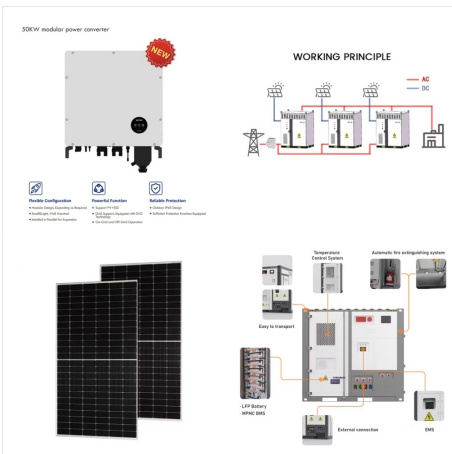
G2 Energy Solutions provides energy modeling for performance path energy code compliance. This allows design teams an alternative to COMcheck for compliance, giving design teams more flexibility (e.g. glass area or performance) and / or the ability to reduce construction budgets by reducing or eliminating aspects of the building that minimally



G2 Energy Solutions is an energy engineering consulting firm based in Phoenix, AZ. With over 12 years" experience, we provide energy modeling and utility rebate services to commercial and industrial customers as well as design and construction firms. Our clients have collectively received millions in rebate money from APS and other utility



G2 Energy are able to design, build and install bespoke Container Solutions for both the Distribution Network Operator (DNO) Contestable Works and the Client's electrical infrastructure. As a Lloyds accredited Independent Connection Provider (ICP), G2 Energy can design a solution for both Medium Voltage (33kV) switchgear and for 132kV



Craig Green is the managing principal at G2 Energy Solutions, an energy engineering consulting firm based in Phoenix, Arizona. Over the last decade, Craig has had the distinct pleasure of both creating and reviewing dozens energy models for LEED and Green Globes applications.





Also, as the Founder of BE Solutions company, Smulewicz has a mission to become a leading innovator in the renewable energy market. Smulewicz oversees business operations and management a wood-waste biomass facility in Poland. Smulewicz was the key leader in securing the permissions to process up to 220,000 ton of biomass per year and achieved



Design Evaluation. Whether you're trying to decide which HVAC system to select or which glass to use, the G2 team can help! We can work with the whole design team to provide design evaluation services and answer these kinds of questions.



G2 Energy Solutions was very honored to be listed as a top contributor in SRP's Business Solutions rebate program for the 3rd year in a row! As always, a big thank you to the local team at Resource Innovations and SRP for their support in our projects as well as our clients for their trust in us! 0.



G2 Energy Corp. Intends to Close the Second and Final Tranche of the Previously Announced Non-Brokered Private Placement Vancouver, British Columbia ??? March 22, 2024 ??? G2 Energy Corp. (CSE:GTOO, FWB:UD9) (the "Company" or "G2") announces today that pursuant



Contact G2 Energy Solutions today for a quote! About Craig Green. Craig Green is the managing principal at G2 Energy Solutions, an energy engineering consulting firm based in Phoenix, Arizona. Over the last decade, Craig has performed the created energy models for performance code compliance on dozens of buildings across the country. Craig has



Contact G2 Energy Solutions today for a quote. About Craig Green. Craig Green is the managing principal at G2 Energy Solutions, an energy engineering consulting firm based in Phoenix, Arizona. Over the last decade, Craig has helped project teams save millions of dollars through the performance path code compliance process over many projects.



About G2 Integrated Solutions (G2-IS) offers a suite of consulting services that enable energy and utilities clients to efficiently and safely operate within regulatory and compliance frameworks. G2-IS implements innovative, value-driven end-to-end solutions, managing risk, assuring compliance, and optimizing performance for upstream, midstream, and downstream oil and gas ???



Craig Green of G2 Energy Solutions was among the presenters at the U.S. Green Building Council (USGBC) Mountain Region Spring Summit in Phoenix, AZ on May 4, 2023. Craig's topic was "New paradigms for carbon and water use in buildings". It was a great turn out, and G2 was proud to be among many ot



G2 Energy, LLC, based in Boise, ID, was formed for the purpose of developing electric power generation from methane at landfill sites. Our company brings together world-class engineers and suppliers who have the equipment, skills, financial resources and technical expertise necessary for timely, successful implementation of high quality, dependable distributed generation projects.





In 2017, G2 Energy connected the very first UK large scale BESS projects at Glassenbury (40MW) and Cleater (10MW), under the first National Grid EFR contracts. Since those first projects, G2 have now completed over 20 fully operational BESS developments, with circa 700MWhr of BESS capacity connected to the grid ??? this represents around 35% of



End-to-end energy solutions. As an independent connection provider (ICP), G2 Energy delivers contestable works at voltages up to and including 132kV, and National Grid self-bay works up to 400kV. We operate a fully audited and verified integrated management system, certified by ISOQAR, and is National Electricity Registration Scheme (NERS)



G2 Energy Solutions (G2) is an energy engineering consulting firm whose purpose is to serve the design team community and their projects. G2's team of engineers and energy analysts bring their extensive experience and deep knowledge of energy modeling, codes and regulations, and incentive programs to benefit each project.