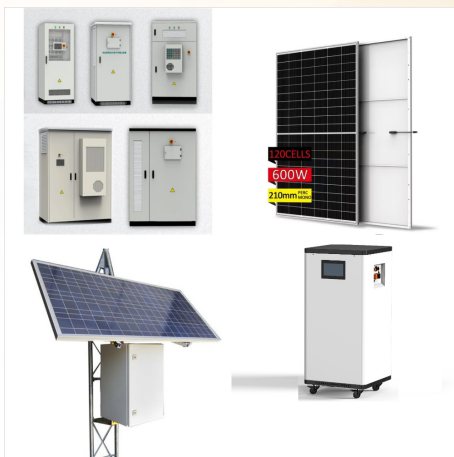




DC Battery Box Pro: DC Battery Box Max: AC
 Battery Box Pro: Box Material: ABS+PC UL94 V-0:
 Box Dimension: L420 x W240 x H340mm: Max
 Battery Dimension: L330 x W180 x H240mm:
 Weight: 3.8kg: 4.1kg: 5.3kg: ???



Strong ABS+PC with flame-retardant rating UL94
 V-0 Pure Sine Wave Inverter Easily see battery
 status with large digital display Multiple port types
 allow you to connect a range of devices Easily
 connect a DC/DC charger or solar panel to charge
 the battery, or use the VSR to charge directly from
 crank battery Can be used to jump start vehicles



New Gen Battery Box is compatible with 70AH to
 130AH lead acid battery (Group 24, Group 27 &
 Group 31) & 70AH to 300AH LiFePO4 battery
 2000W/110VAC(2500W/230VAC) Pure Sine Wave
 Inverter Smart battery monitor with Android APP
 IOS APP



Heavy duty battery box is the innovative solution to turn a battery into a portable power station. Pre-wired all parts and connections with design of plug & play setup, making it easy to install and use without any electrical expertise.



It looks to me like a fisherman's battery box with a solar controller and inverter added. For many years now fishermen have enclosed their trolling motor batteries in rugged, heavy-duty and specialized "battery boxes" that are often festooned with Anderson, USB, and cigarette-lighter-type power connections.



LICITTI heavy duty battery box allows you to turn a regular deep-cycle battery into a convenient portable power station, or create a simple dual battery setup using either a DC-DC charger or our optional 50A Voltage-Sensitive Relay (VSR) and Dual Battery Wiring Kit.