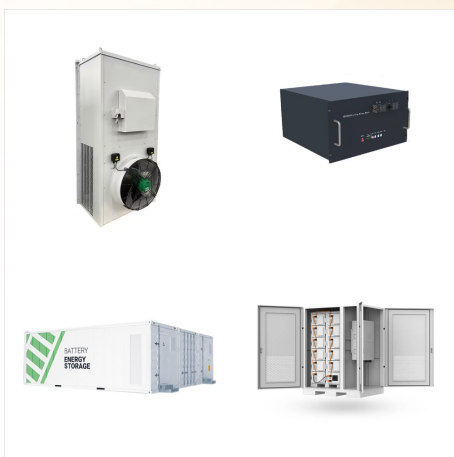




> GE Solar Inverter Projects. Residential Projects . Power Your Home to the Future. The Latest and most Advanced features Intelligently Integrated and Connected to your Home. view . C& I Projects. We care about the details. All the latest safety features integrated for maximum efficiency, enhanced productivity and peace of mind.



Residential Products. GEP US 5-11.4kW; Energy Storage Products. GEH US 5-9.6kW; GEC US 5-9.6kW; GEH US 5-11.4kW; GEC US 5-11.4kW; Business Solutions. Lower Utility Cost. Energy Independence > GE Solar Inverter Download Center Download Center. Technical White Paper . Product . Video . Find what you really need Thank you! Your message has



Solar-Log 350 (and Solar-Log 350 LAN) The Solar-Log 350 & GE Meter is a universal monitoring device for PV production and re-reporting. This easy to install device is compatible with all residential solar PV inverters and does not require on-site configuration.

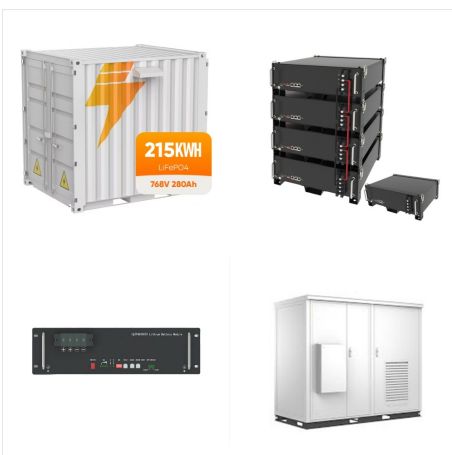
GE RESIDENTIAL SOLAR INVERTER **SOLAR**



Complex rooftop management - The GEH is equipped with up to 4 MPPTs to feed solar power to large residential properties and enables flexible PV string configurations for complex rooftops to maximise solar generation for the homeowner. The GEH series has been designed with intelligent solutions that read and analyse your rooftop area and respond



GE Vernova will provide the 2,000-V inverter for the solar park, while Shoals Technologies will supply the electrical balance of system solutions. The other collaborating supplier will provide the PV modules. Residential solar is becoming a part of critical energy infrastructure. Cybersecurity measures are catching up to that reality.



This guide offers solid advice on choosing the best solar inverter for your installation. Solar Quotes. Ready to get up to 3 quotes for solar, batteries or EV chargers? GE reviews German brand Made in China String Inverters. This is the most common type for residential use. All the solar panel inverters shown above (apart from Enphase

GE RESIDENTIAL SOLAR INVERTER **SOLAR**



GE 5-20kW Inverters. Three-phase ??? 2 MPPTs
Intelligent safety features and unmatched efficiency place this model into a league of its own. This three phase inverter is a perfect choice for small business needs and a wider scale of residential applications, with the capability of 200% oversizing, incredible efficiency, and compatibility with the latest high power & bifacial modules.



Residential Products. GEP 3.6-5kW; GEP 3.6-6kW
Single Phase G3; GEP 5-10kW; GEP 5-10kW
Single Phase G3 ; GEP 4-20kW; C& I Products.
GEP 25-36kW; GEP 50-60kW; GE Solar Inverter participated in EIF 2021 held in Antalya between 13-15 October. In its 14th year, this event brought various stakeholders



What do solar & storage solutions bring to the power generation industry? Inverter for Solar Application. Read more. FLEXINVERTER STORAGE APPLICATION. Inverters for Storage Application. GE Vernova is working with Helios Energy to integrate two energy and solar systems together. Ultimately, this hybrid power solution will improve solar

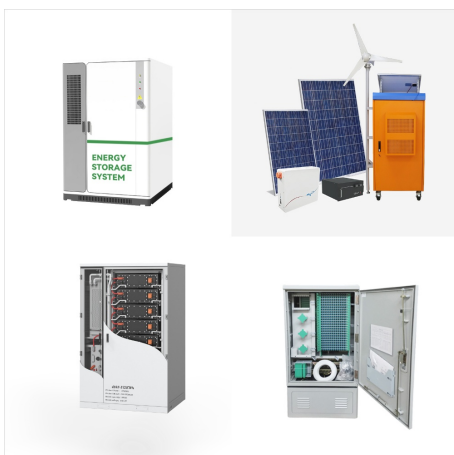
GE RESIDENTIAL SOLAR INVERTER **SOLAR**



The GEP 5-10kW Solar Inverter is a powerful single-phase model with a power capacity ranging from 5kW to 10kW with three MPPTs for maximum power retention. The GEP 5-10kW is the ultimate solution to cater to the residential segment's rising expectations. This powerful single-phase model boasts 3 MPPTs for maximum power retention and



The GEP 5 to 11.4kW inverters focus on residential home solar installations. The powerful single phase, 240Vac model boasts up to 3 MPPTs and maximum 16A DC input current per string, which drives the inverter to its maximum capacity and unleashes its full potential of 160% DC oversizing, allowing for up to 110% AC overloading.



GE PLATINUM INSTALLER PROGRAM . The GE Platinum Installer Program consists of a small number of selected solar installers in the United States that we have partnered with to represent leading PV and energy storage solutions from GE. Partners receive exclusive opportunities for training, marketing support, and more!

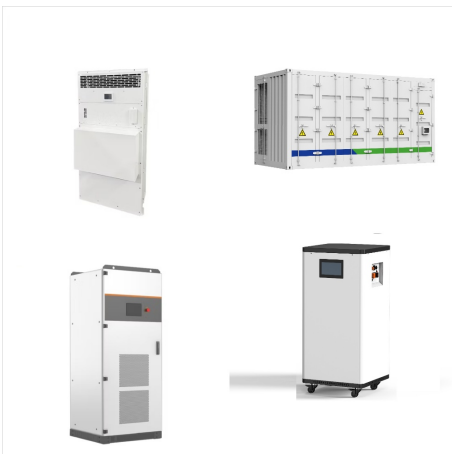
GE RESIDENTIAL SOLAR INVERTER **SOLAR**



The 7.7kW General Electric (GEP7.7) inverter is a single phase, grid-tie string inverter that features up to 3 MPPTs with a maximum 16A input current per string. Designed for residential use, this GE inverter is easy to install and ensures maximum safety on all roofs with integrated advanced AFCI and rapid shutdown.



The GEP 5-10kW inverter is the ultimate solution for residential systems. This powerful single-phase model boasts 3MPPTs for maximum power retention and absolute minimum power loss. With a startup voltage of only 80V, this superior, intelligently efficient inverter is specifically designed to harness solar power from sunrise to sunset



GE Solar Inverter intelligent solar energy integrates the finest technological components with PV inverters and energy storage solutions. Develop future-ready machines. HOMEOWNERS. Energy Independence; Solar Analytics; ABOUT US. Case Studies; PRODUCTS. Residential Products. GEP 3.6-5kW; GEP 3.6-6kW Single Phase G3; GEP 5-10kW; GEP 5-10kW Single

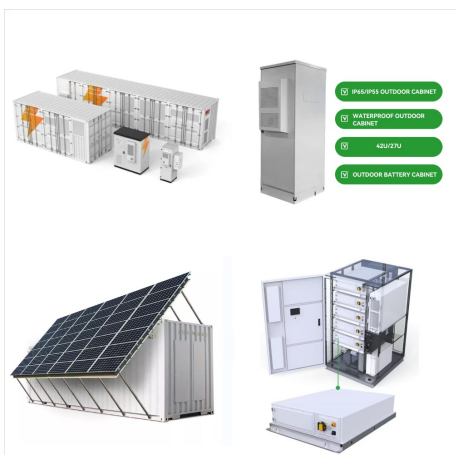
GE RESIDENTIAL SOLAR INVERTER **SOLAR**



GE solar kits include your choice of solar panels, General Electric inverters, mounting and solar system design plans. Toggle menu. Solar power made affordable and simple; 888-498-3331; Email Us; Sign in or Register; Compare ; Cart. Residential Installation; Commercial Installation; Non-Profit Installation; Solar for Professionals . All



Residential Products. GEP US 5-11.4kW; Energy Storage Products. GEH US 5-9.6kW; GEC US 5-9.6kW; GEH US 5-11.4kW; GEC US 5-11.4kW; SUPPORT. Service; Download; Videos; Monitoring Portal; > GE Solar Inverter Videos Center. VIDEOS Video Center. Learn more about the exclusive GE products at RE+ 2022. Events. Location: USA. RE+ 2022 recap

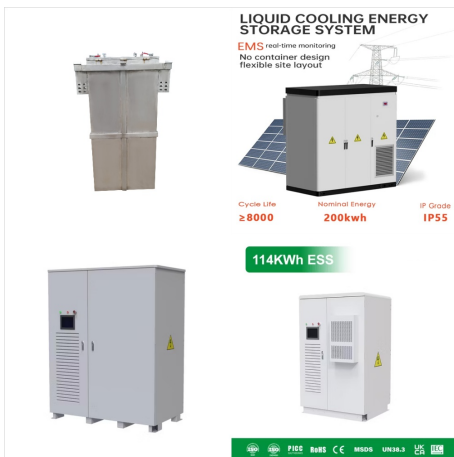


The latest evaluation and ranking for best solar inverters in 2023 have been compiled in a comprehensive article, which is an essential read for those wanting to stay updated on the best-performing solar inverters in 2023. Best High-End Solar Inverters in Australia (Money No Object): First, we asked the installers:

GE RESIDENTIAL SOLAR INVERTER **SOLAR**



GE offers a diverse range of solar inverters tailored for residential, commercial, and industrial applications in the Australian market. These inverters incorporate advanced technologies like MPPT, grid-tied capabilities, and ???



GE Solar Inverter is dedicated to data protection. Our privacy policy outlines the collection, use, disclosure, and protection of your personal browsing data. HOME; Residential Products. GEP US 5-11.4kW; Energy Storage Products. GEH US 5-9.6kW; GEC US 5-9.6kW; GEH US 5-11.4kW; GEC US 5-11.4kW; SUPPORT. Service; Download; Videos; Monitoring

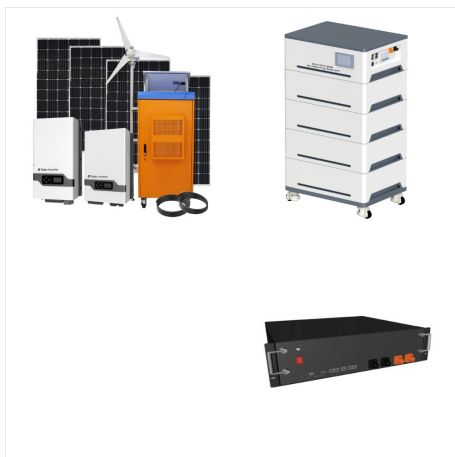


GE solar inverters are made by Chinese inverter manufacturer GoodWe and supported locally by Goodwe Australia. That's a good thing. GE had some skin in the residential solar inverter game pretty early on in the rooftop PV revolution through GE Power Controls - the SVT series. How long these units were produced for isn't clear, but we've

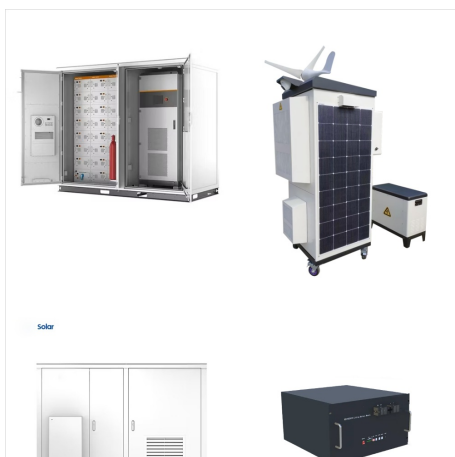
GE RESIDENTIAL SOLAR INVERTER **SOLAR**



The 6kW General Electric (GEP6.0) inverter is a single phase, grid-tie string inverter that features up to 3 MPPTs with a maximum 16A input current per string. Designed for residential use, this GE inverter is easy to install and ensures maximum safety on all roofs with integrated advanced AFCI and rapid shutdown.



Residential Products. GEP 3.6-5kW; GEP 3.6-6kW Single Phase G3; GEP 5-10kW; GEP 5-10kW Single Phase G3; GEP 5-20kW; C& I Products. GEP 29.9kW; GEP 50-60kW; Both new and existing customers of Australia and New Zealand with a GE inverter on their solar system can have a one year free trial.



Intelligent safety features and unmatched efficiency place this model in a league of its own. This inverter is a perfect choice for small business needs and residential applications, providing a unique competitive edge with up to 200% DC oversizing and compatibility with the latest high power & bifacial modules.