

Does Solana have a solar plant near Gila Bend?

Solana, the giant concentrated-solar plant near Gila Bend, began commercial operations on Monday that will deliver power to Arizona residents for the next 30 years. You've certainly seen the rows and rows of mirrors in the last year or so if you've driven the Gila Bend route on the way to San Diego.

What is the Solana solar power project?

The Solana solar power project will implement concentrating solar plant technology using parabolic trough mirrors. Solana Solar Power Generating Station, with an output capacity of 280MW, is one of the largest concentrating solar power (CSP) plants in the world.

Who are the EPC contractors for the Solana solar power plant?

The engineering, procurement and construction (EPC) contractors for the project are Teyma USA and Abener Engineering and Construction Services. The Solana solar power plant provides clean energy to 70,000 households and reduces down carbon dioxide emissions by up to 475,000t each year.

Where is Abengoa Solar located?

It is developed on agricultural land near the city of Gila Bend in the state of Arizona, US, and started generating power in October 2013. Construction works for the massive solar power plant started in late 2010. Abengoa Solar developed the project for Arizona Public Service (APS).

How much electricity does Abengoa Solar produce?

Built by the Spanish company Abengoa Solar, the project can produce up to 280 megawatts (MW) gross, supplied by two 140 MW gross (125 MW net) steam turbine generators: enough electricity to meet the needs of approximately 70,000 homes and obviate the emission of roughly 475,000 tons of CO<sub>2</sub> every year. [4]



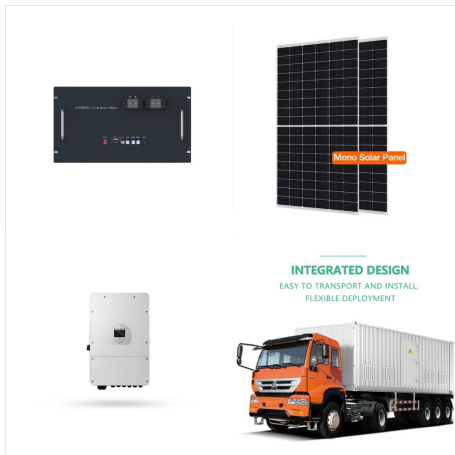
In 2013, Black & Veatch was awarded an Engineering, Procurement and Construction (EPC) contract to design and build the 32-megawatt utility-class Gila Bend Solar Power Plant located on 400 acres in Gila Bend, Arizona. Using innovative solar power technologies and the energy source of the sun, the plant generates enough solar energy to power



1 review and 3 photos of ABENGOA SOLAR SOLANA POWER PLANT "The Solana Generating Station is a solar power plant is near Gila Bend, Arizona, about 70 miles (110 km) southwest of Phoenix. The name is Spanish for sunny spot. The solar plant was completed in 2013. When it was commissioned, it was the largest parabolic trough plant in the world and the first U.S. a?|



When I talked to Buss on a 110-degree late September afternoon, three solar plants were under way in or near Gila Bend: the 17-megawatt Paloma plant, a field of 275,000 photovoltaic panels that



The solar power plant located near Gila Bend, Arizona features parabolic shaped mirrors mounted on structures that track the sun and concentrate the sun's rays to provide heat to power a conventional turbine. Harris installed over 170,000 linear feet of large bore carbon steel welded pipe over a three-square mile area. Our dedicated work



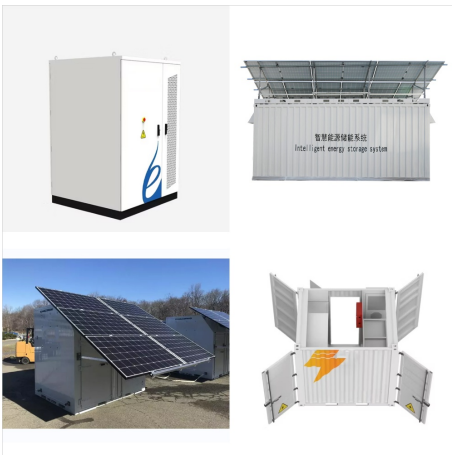
The world's largest parabolic trough plant, owned by Abengoa Solar just west of Gila Bend, started producing electricity in October for about 70,000 households in Arizona Public Service Co.'s



One of the largest solar power plants in the world has started producing electricity in the Arizona desert. The Solana Generating Station went online a few weeks ago. we're about three stories above ground here next to some cooling towers," I explained when I toured the plant near Gila Bend this week. "Here's some steam rising in the



Arizona Public Service's (APS) Cotton Center solar plant has officially come online in Gila Bend, Arizona. The 17MW facility was developed and constructed by Solon and brings APS' total



The Ivanpah Solar Electric Generating System is a solar thermal power project in the Mojave Desert, 40 miles (64 km) southwest of Las Vegas, with a gross capacity of 392 MW. [8] The 280 MW Solana Generating Station is a solar a?|



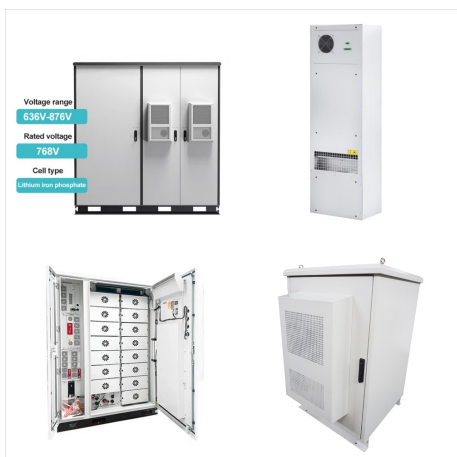
The largest solar farm serving an Arizona utility is the Solana Generating Station near Gila Bend, a 280-megawatt concentrated solar power system that serves Arizona Public Service Co.



Gila Bend Hybrid is ranked #29 out of 102 solar farms in Arizona in terms of total annual net electricity generation. Gila Bend Hybrid generated 13.9 GWh during the 3-month period between September 2023 to December 2023.



Gila Bend, AZ Focusing the Power of the Sun. In a testament to PayneCrest's steadfast reliability, Abengoa increased PayneCrest's scope of work 57 fold in the construction of the first-of-its-kind Solana Concentrated Solar Power Plant in Gila Bend, Arizona. The project earned PayneCrest an AGC Keystone Award.



Abengoa Solar purchased roughly 3,000 acres near Gila Bend, AZ, where it intends to develop the world's largest solar power plant. The Solana Generating Station is a solar electric power plant that will be located about 70 miles southwest of Phoenix near Gila Bend, Arizona. Solana will use concentrating solar power (CSP) technology coupled with





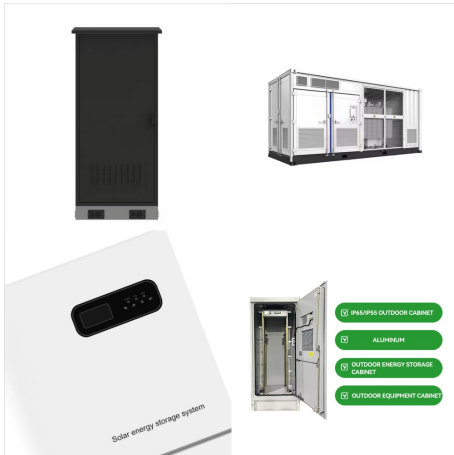
1 review and 3 photos of ABENGOA SOLAR  
SOLANA POWER PLANT "The Solana Generating Station is a solar power plant is near Gila Bend, Arizona, about 70 miles (110 km) southwest of Phoenix. The name is Spanish for sunny a?]



East Watermelon Road, Gila Bend, AZ The Gila River Power Station is the largest nuclear power plant in the United States, with three reactors and a net summer electricity generating capacity of 3,937 megawatts. Gillespie 1 Old US Highway 80, Gila Bend, AZ. Paloma Solar Plant 32700 West Powerline Road, Gila Bend, AZ. Paloma Solar Power



The Solana solar-power plant near Gila Bend gets plenty of sunshine, but problems keep appearing like black clouds to dampen its performance. In July and August, two transformer fires cut the \$2



Ranked #729 out of 5,635 Solar Power Plants  
 Nationwide: Ranked #78 out of 155 Arizona Power  
 Plants: Ranked #38 out of 102 Arizona Solar Power  
 Plants: Fuel Types: Solar: Paloma Solar Hybrid:  
 Gila Bend, AZ: 79.5 GWh: 0.9 mi: RE Gillespie 1  
 LLC: Gila Bend, AZ: 78.7 GWh: 0.6 mi: Red Hawk:  
 Arlington, AZ: 4.2 TWh: 23.2 mi: Solana Generating



VERTEX provided construction claims consulting  
 services on the \$2B Solana Generating Station  
 project in Gila Bend, Arizona. Solana is a 250-MW  
 parabolic trough concentrating solar power (CSP)  
 plant with an innovative thermal energy storage  
 (TES) system. The project spans roughly 7,770,000  
 square miles and consists of over 32,000 collector



Gila Bend houses five solar power plants producing  
 367MW of solar energy. Source: Town of Gila Bend  
 General Plan 2026. Learn more about doing  
 business in Gila Bend. Gila Bend. Ready to get  
 started? Contact our team. Greater Phoenix  
 Economic Council 2 North Central Ave. Suite 2500,  
 Phoenix, Arizona 85004 602.256.7700.



Gila River Power Station - natural gas. Located in Gila Bend, Arizona, the Gila River Power Station is home to four combined cycle power blocks a?? SRP owns and operates blocks 1 and 4, and operates blocks 2 and 3 for the owner Tucson Electric Power (TEP). Each power block consists of two combustion turbines, two heat recovery steam generators



In 2013, Black & Veatch was awarded an Engineering, Procurement and Construction (EPC) contract to design and build the 32-megawatt utility-class Gila Bend Solar Power Plant located a?|



Data in the Sonoran Solar/ Vasari Energy a?? Gila Bend Solar Power Plant 140 MW a?? Arizona report has been gathered from tracking over 60,000 news, company and government sources, as well as primary research with direct contact with key project stakeholders. Scope.





Gila Bend-SPG Solar PV Park is a 32MW solar PV power project. It is located in Arizona, the US. According to GlobalData, who tracks and profiles over 170,000 power plants worldwide, the project is currently active. It has been developed in a single phase. Post completion of construction, the project got commissioned in December 2014.



Utility-scale solar power is just one of Gila Bend's industries. It is also home to the nation's second largest natural gas power plant, a \$1.2 billion installation, a \$50 million paper mill, and more recently added Calgon Carbon, a global leader in making water and air safer and cleaner to industry. In the past few years, Gila Bend has seen



APS will add battery storage to its existing fleet of solar power plants, build new solar plants with storage, and use storage to deliver cleaner energy to customers at times of peak energy usage. Solana Generating Station in Gila Bend was the largest thermal solar-storage plant in the world when it began operation in 2013 and has been



Firefighters battle solar plant fire in Gila Bend By Steve Shadley January 15, 2015 NEWS EXCERPT  
A solar thermal power generating station near Gila Bend is back online today after a fire started at the plant on Wednesday night. The blaze is under investigation.



Abengoa Solar Solana Power Plant is a solar energy facility situated in Gila Bend, AZ. It specializes in harnessing solar power to generate electricity for commercial and residential use. The plant utilizes cutting-edge technology to convert sunlight into clean and sustainable energy, contributing to the reduction of carbon emissions and



Solana, the giant concentrated-solar plant near Gila Bend, began commercial operations on Monday that will deliver power to Arizona residents for the next 30 years. You've certainly seen the rows