

What if I don't receive a premium feed-in tariff?

Where a Premium FIT is paid, please note that all premium feed-in tariff schemes are closed to new entrants, so if you are not currently receiving a premium feed-in tariff, you will only be able to receive the standard feed-in tariff. GloBird Energy provides feed-in tariffs for households in NSW, QLD, SA and VIC.

Where does globird energy provide feed-in tariffs?

GloBird Energy provides feed-in tariffs for households in NSW, QLD, SA and VIC. Compare the latest solar feed-in tariffs for GloBird's plans.

Where can I find the best solar feed-in tariff in QLD?

Check the QCA's website for the current rates. What retailer has the best solar feed-in tariff in QLD? At the time of updating (August 2024), Energy Australia currently has the highest solar feed-in tariff offer in QLD, whereby the maximum a customer can get is 12 cents per kilowatt hour (c/kWh). Globird Energy comes in second at 11c/kWh.

What is a solar feed-in tariff?

You may have heard about feed-in tariffs as high as 60c/kWh. Unfortunately, these premium solar feed-in tariffs are only available to homeowners who installed and registered their solar systems many years ago - generally before 2011, depending on the state.

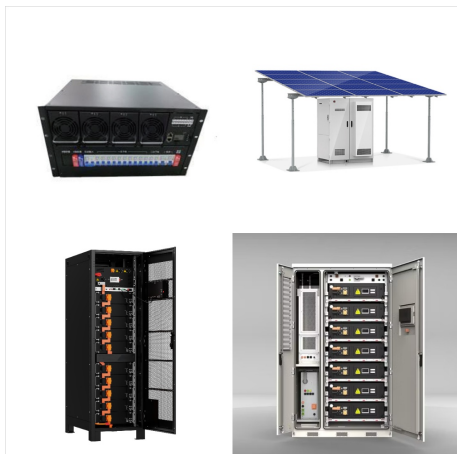
Do you need a feed-in tariff for your solar system?

Because feed-in tariffs are voluntary in many states, solar system owners must shop around to find a retailer that offers them a favourable rate. Everyone wants to get the greatest possible value out of their solar installation; feed-in tariff rates are only one piece of the puzzle.

Do solar retailers offer a minimum feed-in tariff rate in NSW?

You can try our Solar-friendly Retail Plan Comparison Tool to get a more complete picture. At the moment, there is no mandatory minimum feed-in tariff rate in NSW. Instead, individual electricity retailers assign a value to exported solar power as they see fit. Some retailers offer more than others, and some retailers offer nothing.

GLOBIRD ENERGY SOLAR FEED IN TARIFF



? Here, we will present you with some of the best solar feed-in tariffs that you can avail of in New South Wales as a solar consumer. The guide will help you choose the best retailers offering the best feed-in tariff deals. 1. GloBird Energy. GloBird Energy offers a minimum solar feed-in tariff of 1 cent per kWh and a maximum of 17 cents per KWH.



What retailer has the best solar feed-in tariff in QLD? At the time of updating (October 2024), ENGIE and Origin Energy currently has the highest solar feed-in tariff offer in QLD, whereby the maximum a customer can get is 12 cents per kilowatt hour (c/kWh). Globird Energy comes in second at 11c/kWh.



Keep your electricity bill under control with GloBird Energy. A budget energy company for Victorian and Australian power users. VIC Feed-in Tariff: Rates FY23-24 (Excl. GST) Rates FY24-25 (Excl. GST) Peak (4pm ??? 9pm) everyday more people using energy in the middle of the day and increased storage capacity to keep the excess solar

GLOBIRD ENERGY SOLAR FEED IN TARIFF



The solar feed in tariffs for GloBird Energy residential plans in postcode 2000 on the Ausgrid network range from 1 to 12 c/kWh. The plan with the highest solar feed in tariff is SOLARPLUS ???



History of solar feed-in tariffs in Victoria. The Premium Solar Feed-in Tariff was introduced on 1st of November 2009 in Victoria offering residential a rate of 60 c/kWh for exported solar energy. This program closed to new applicants on the 29th of December 2011. Participants of this scheme will receive the premium rate until 2024.

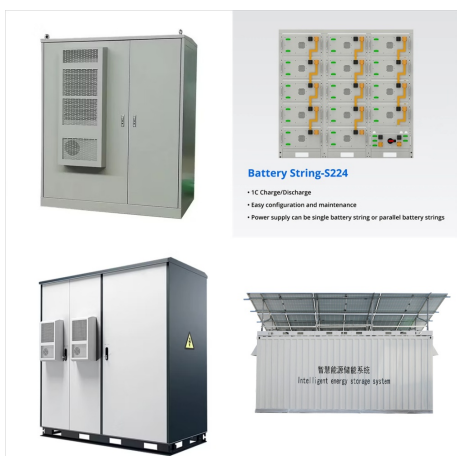


? A good solar feed-in tariff is important, but to find the best deal you also need to value usage rates and supply charges. GloBird Energy: NSW: Residential: 1.0: 12.0: 1,200: Higher feed-in tariff on SolarPlus plans capped to first 8kWh exported per day: Dodo: NSW: Residential: 3.5: 3.5: 350:

GLOBIRD ENERGY SOLAR FEED IN TARIFF



Does GloBird Energy offer solar? Yes, GloBird Energy offers customers with solar panels a feed-in tariff (FiT) that varies depending on the plan, location and tariff type. The provider also has a solar specific plan available to customers in New South Wales and south-east Queensland. This plan, aptly named Solar Plus, awards a higher feed-in



The Scheme, referred to as "Premium solar Feed-in Tariff" or "Government solar Feed-in Tariff", is currently offered to households with solar system sizes of 5 kilowatts or less. It provides a feed in credit of at least 60cents per kilowatt hour for electricity exported to the grid.



Premium Feed-in Tariff (PFiT) scheme ends 1st Nov 2024. Fifteen years ago, back in November 2009, Victoria set up the Premium Feed-in Tariff (PFiT) scheme where households were paid 60 cents for every excess kilowatt hour of energy fed back into the state electricity grid. This was introduced as an incentive to encourage early adopters to install solar systems.

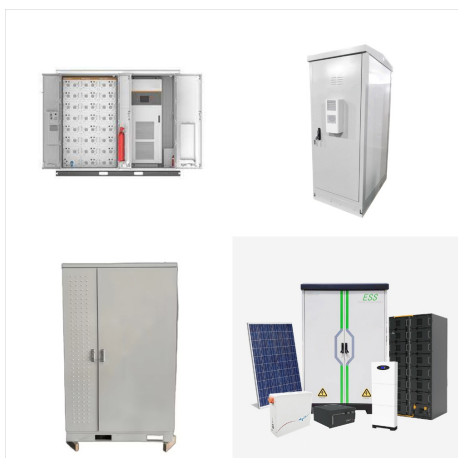
GLOBIRD ENERGY SOLAR FEED IN TARIFF



The solar feed in tariffs for Red Energy residential plans in postcode 2000 on the Ausgrid network range from 6 to 12 c/kWh. Plans with a higher feed in tariff include: Globird Energy SOLARPLUS Residential (Flat Rate CTL Load)-Ausgrid (12 c/kWh) EnergyAustralia Balance Plan - Demand (7.6 c/kWh)



GloBird Energy scored a below-average 3.54 out of 10 in overall performance, leaving much to be desired as a whole. They did, however, score a perfect 10 out of 10 in halting fossil fuel expansion. Globird's second-highest score is in pollution and environmental harm with an average 5 out of 10.



At GloBird, you're free as a bird. Free to enjoy our low cost energy for as long or as little as you like with our attractive range of cheap electricity and gas plans. There are no lock-in contracts, no termination fees, just great value energy.

GLOBIRD ENERGY SOLAR FEED IN TARIFF



Check the times and peaks for the providers Globird Energy uses to help you save money for your energy bills. Skip to primary navigation (Time Of Use) tariff also known as (Peak / Off-Peak), please be mindful that the time periods for Peak and for Off-Peak will change to the times explained above. Solar/Generation Feed in (9pm-10am, 2pm

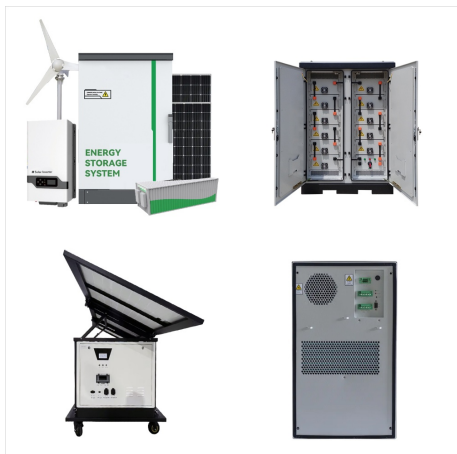


*Calculated based on usage of 4000kWh/year for a residential customer on a single rate tariff in the Citipower network. The VDO reference price is: \$1,456 / year. Click [here](#) to view plan energy fact sheets In the table below, we have compiled a list of the most up-to-date electricity and gas plans offered by GloBird Energy in New South Wales (NSW).

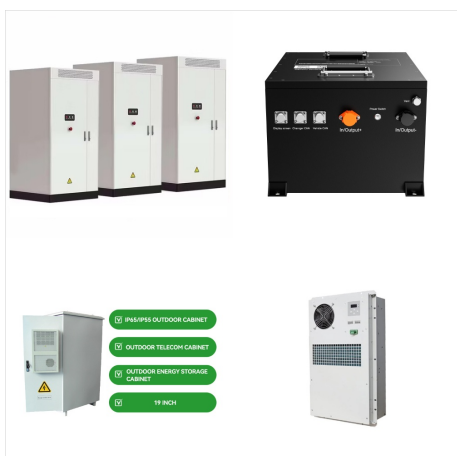


However, AGL showcased a range of unique features and higher feed-in tariff rates than GloBird Energy. solar feed-in tariff credits that your solar system could generate. The VDO comparison will differ based on tariff type and location (distribution area). Your actual energy bill may be significantly different to these estimates if your

GLOBIRD ENERGY SOLAR FEED IN TARIFF



Aussie-owned provider GloBird Energy is now offering households with solar panels in the Sunshine State the chance to save big on their exports, thanks to its sizzling new solar electricity plan.. The retailer's Solar Plus plan is now available to customers in south-east Queensland, and comes with a boosted solar feed-in tariff of 11 cents per kilowatt hour (c/kWh) ???



Compare Globird Energy Rates and Offers here at Electricity Monster ??? 100% Free Service. Call Us 1300 232 848. In the table provided, you will find the latest solar tariff feed-in rates that GloBird Energy offers in Victoria, South Australia, New South Wales, and Queensland. State Minimum FIT (c/kWh) Maximum FIT (c/kWh) QLD: 3.00: 11.00



Plans with a higher feed in tariff include: Globird Energy SOLARPLUS Residential (Flat Rate CTL Load)-Ausgrid (12 c/kWh) EnergyAustralia Balance Plan - Demand (7.6 c/kWh) Take a look at a list of the plans with the best solar feed in tariffs in your city/state: Best Solar Feed In Tariffs & Plans In Adelaide;

GLOBIRD ENERGY SOLAR FEED IN TARIFF



a benchmark range for solar feed-in tariffs each year to 2021. Solar Feed-In Tariff
Benchmark Households and small businesses with solar panels can earn a feed-in tariff from their retailer for the electricity they export to the grid. Our benchmark range for 2020-21 is 6.0 to 7.3 c/kWh
IPART sets the benchmark rate for solar households



Results for residential customers in Sydney NSW 2000, Australia in the Ausgrid network, where general usage is 3,900 kWh / year on a Single Rate tariff. Lowest annual price displayed, your bill will differ based on actual usage.



The solar feed in tariffs for GloBird Energy residential plans in postcode 5000 on the SA Power Networks are all 1 c/kWh. The plan with the highest solar feed in tariff is ULTRASAVE Residential (Flexible Rate)-SAPN, with a feed in rate of 1 c/kWh. Keep scrolling to see individual plan details.

GLOBIRD ENERGY SOLAR FEED IN TARIFF



Over the years, feed-in tariffs have reduced, but so has the price of installing a solar power system. With prices dropping more than 50% since 2012, even without any feed-in tariff, solar is often a great investment with super short payback periods.



Conversely, when it comes to solar feed-in tariffs and features, Energy Australia outperformed GloBird Energy with better rates and more features. But before switching to either one of these retailers we recommend phoning us at Electricity Monster on 1300 232 848 and let our energy experts work to find you the best deal we have available.



It is possible to lose important benefits like premium feed-in for solar if you change tariff. GloBird give you a quote for your actual meter tariff. This is the most accurate way of providing a valid quote. Please be careful when considering changing your tariff, another tariff may seem more cost effective, but often are not.

GLOBIRD ENERGY SOLAR FEED IN TARIFF



Origin Energy, ActewAGL, Globird Energy, and Energy Australia are some of the top solar feed-in tariff providers in New South Wales for 2024. When choosing a solar plan, it's important to consider factors such as energy rates, solar feed-in tariffs, system eligibility (and size limits), and potential rebates for which you may be eligible.



Falling feed-in tariffs. If you were an early adopter of solar, you may continue to benefit from historically high feed-in tariffs. However, feed-in tariffs have fallen significantly since they were first offered in 2008. These days, feed-in tariffs reflect the market value of electricity.



The solar feed in tariffs for GloBird Energy residential plans in postcode 3000 on the Citipower network are all 0 c/kWh. The plan with the highest solar feed in tariff is GloBird SURE SAVE Residential (Two Rate) Citipower, with a feed in rate of 0 ???