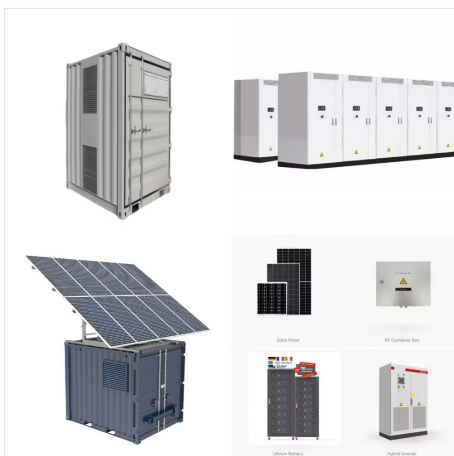




Solar Controller and Accessories: Complete User Manuals Monsoon Gohain. Apr 03, 2023. 60085
 PWM Solar Controllers GP-PWM-30 (No Bluetooth)
 USER MANUAL DOWNLOAD GP-PWM-30 USER
 MANUAL . MPPT Solar Controllers .
 GP-RVC-MPPT-10 . USER MANUAL Home Go
 Power!



Yes - Warranty Text Go Power! GP-PWM-30 30
 Amp Solar Regulator: Yes - Warranty Text Victron
 SmartSolar MPPT Charge Controller - 100V -
 30AMP - UL Approved [SCC110030210] See More
 Now hiding additional rows in the Table.
 Specifications. Manufacturer Part Number.
 GP-PWM-30-UL. Model. G75-GPPWM30. Color.
 Multicolor. Condition. New.

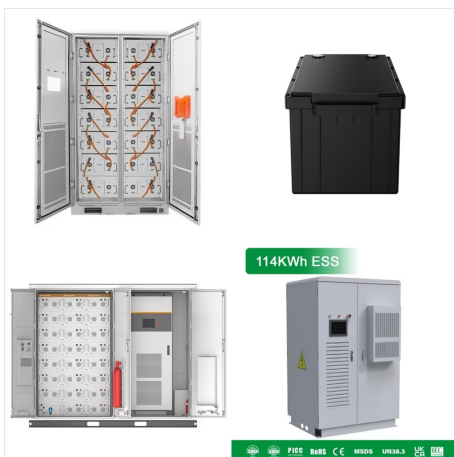


If this GP-PWM-30-SQ was purchased as part of a
 Go Power! Solar Power Kit, appropriate wire type,
 gauge and length is provided. Please see article
 GP-PWM Solar Charge Controller 10-SQ:
 Operations. If the GP-PWM-30-SQ was purchased
 separately, follow the instructions included here.
 Wire type is recommended to be a stranded
 aluminum UV resistant

GO POWER GP PWM 30 30 AMP SOLAR REGULATOR



The Go Power! 30 Amp PWM Digital Solar Controller is designed to maintain the life of a battery by protecting it from overcharging. When your battery has reached a 100% state of charge, the controller prevents overcharging by limiting the current flowing into ???



Although the GP-PWM-30 will accept PV current greater than 25 Amps for a short duration, damage may occur if the GP-PWM-30 operates continuously with greater than 30 Amps of PV input. The Go Power 30 amp pwm controller is a simple way to protect your batteries in a 12 volt off grid solar rv system. It is affordable and comes with a greta

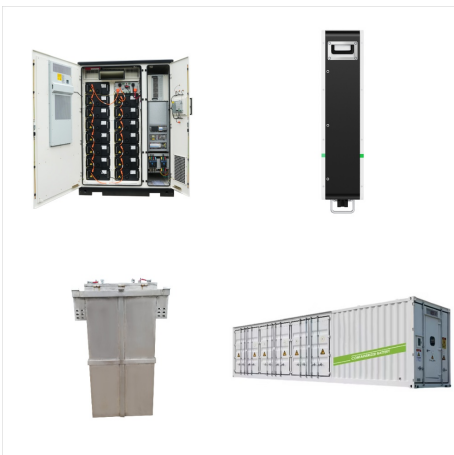


How to operate the GP-PWM Solar Charge Controller 30-SQ. The GP-PWM-30-SQ has an automatic equalize feature that will charge and recondition your batteries once a month at a higher voltage to ensure that any excess sulfation is removed. This feature is recommended for Flooded batteries only. Go Power! Home Go Power!

GO POWER GP PWM 30 30 AMP SOLAR REGULATOR



MODEL: GP-PWM-10-FM. The Go Power! 10 amp Flush-Mounted Solar Controller regulates flow from the solar panels to the battery and prevents overcharging and optimizes battery lifespan. PRODUCT FEATURES. Pulse Width Modulation (PWM) charging; Flush mounted for a finished installation; Unique four stage charging to protect your battery bank



A solar controller is an essential component of your photovoltaic (PV) system. The controller maintains the life of the battery by protecting it from overcharging. When your battery has reached a 100% state of charge, the controller prevents overcharging by limiting the current flowing into the batteries from your sola



An essential part of your solar charging system, Go Power! offers a variety of economical and high-performance solar charge controllers. View the full lineup here. Go Power. Available on pre-wired RV's, the GP-PWM-30-SQ is a 30-amp controller that prevents your battery from overcharging. This controller is not available for purchase.

GO POWER GP PWM 30 30 AMP SOLAR REGULATOR



(2) With the solar array in sunlight, check the voltage at the controller solar array terminals with a voltmeter. If there is no reading at the controller solar array terminals, the problem is somewhere in the wiring from the solar array to the controller.

Remedy:



The Go Power! 30 Amp Dual Bank Bluetooth Digital Solar Controller (GP-PWM-30-UL) from Nomadic Supply Company(R) protects the life of your solar battery, whether its Lithium, AGM, or Lead Acid.. A solar charge controller is an essential component of your photovoltaic (PV) system. The Go Power! 30 Amp Dual Bank Bluetooth Digital Solar Controller (GP-PWM-30-UL) ???



2. Complete the installation of the solar modules. If this GP-PWM-30-SB was purchased as part of a Go Power! Solar Power Kit, follow the Installation Guide provided. Otherwise, follow manufacturer's instructions for solar module mounting and wiring. Do not exceed the GP-PWM-30-SB Amp current and max voltage ratings

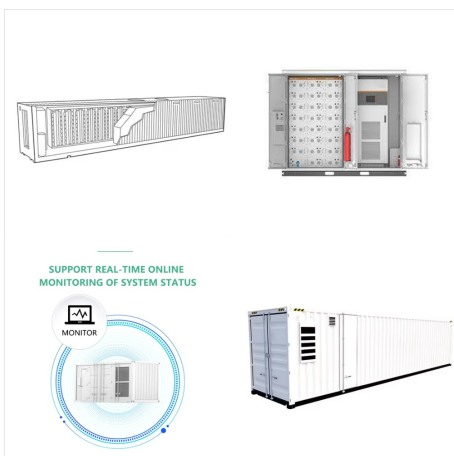
GO POWER GP PWM 30 30 AMP SOLAR REGULATOR



A solar charge controller is an essential component of your photovoltaic (PV) system. The controller maintains the life of the battery by protecting it from overcharging. When your battery has reached a 100% state of charge, the controller prevents overcharging by limiting the current flowing into the batteries from yo



Using the AC button with a compatible Go Power! inverter; USB Charging; Max Boost Function Need additional information. Hard to understand. Inaccurate/irrelevant content. Missing/broken link. Tags. GP-PWM-30-UL (25) gp-pwm-30 install (4) On This Page. Related Articles. PWM-30-UL: Common Issues & Troubleshooting How to Use the PWM-30-UL



Go Power Marketing. Jun 17, 2022. The solar controller requires power from the battery in order for it to operate (9-14 volts) . The first step in troubleshooting any solar controller is to determine if you have 12 volts to the controller. GP-PWM-30-UL (25) PWM (21) Troubleshooting (2) On This Page. Related Articles. GP-PWM-30-UL

GO POWER GP PWM 30 30 AMP SOLAR REGULATOR



Go Power!'s silver SLIM Solar Kit (100 watts) is ideal for RVs or boats with limited roof space and is perfect for maintaining battery charge off-grid. (100 watts) with a PWM-30 Amp Bluetooth(R) Solar Controller is ideal for RVs or boats with limited roof space. Power your lights, fans, and other DC appliances using power generated from the



The GP-SB-PWM solar controller is intended for use at 12 VDC nominal system voltage and is rated for a maximum continuous DC input current of 10A and 30A respectively. The voltage and current ratings of all equipment ???



MODEL: GP-PWM-30-FM-DL The Go Power! 30 amp Solar Controller regulates current flow from the solar panels to the battery and prevents overcharging and optimizes battery lifespan. Product Features: Temperature compensated pulse width modulation (PWM) charging; 4 Battery charging profiles: Sealed/Gel, AGM, Flooded, and LiFePO4 (lithium)

GO POWER GP PWM 30 30 AMP SOLAR REGULATOR



The Bluetooth(R)-enabled, GP-SB-PWM-30BT is a 12 volt flush-mounted, single-bank, photo-voltaic (PV) charge controller rated for a continuous solar current input of 30 amps. Easy to install with screw cover plate, and features improved Bluetooth(R) performance for ???



Go Power!'s black SLIM Solar Kit (100 watts) with a PWM-30 Amp Bluetooth(R) Solar Controller is ideal for RVs or boats with limited roof space. Power your lights, fans, and other DC appliances using power generated from the sun. Perfect for maintaining your battery charge on overnight adventures off the grid.



MODEL: GP-PWM-10-SQ. The Go Power! 10 amp Solar Controller regulates current flow from the solar panels to the battery and prevents overcharging and optimizes battery lifespan. *Product not sold in stores; available as an OEM install only. Actual item may not be exactly as pictured. Product Features: Pulse Width Modulation Charging

GO POWER GP PWM 30 30 AMP SOLAR REGULATOR



The Go Power! Bluetooth Enabled 30-amp Solar Controller (GP-PWM-30-UL) allows you to view and set essential battery information, including: - Review Solar Charging Current, - Activate Max Boost, - Viewing Battery Voltage, - Check on Battery State of Charge (SOC), - and Set the battery type and charging profile 10 & 30-amp MPPT (RV-C) Solar



2. With the solar array in sunlight, check the voltage at the controller solar array terminals with a voltmeter. 3. If there is no reading at the controller solar array terminals, the problem is somewhere in the wiring from the solar array to the controller. Remedy: 1.