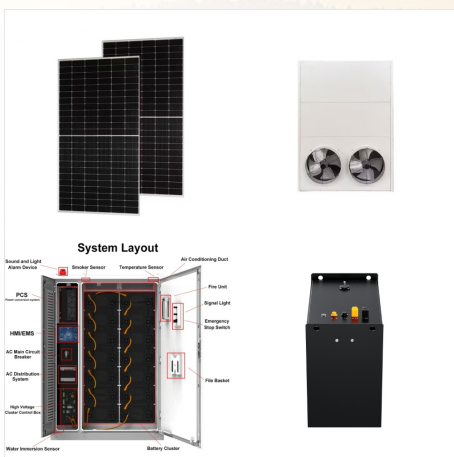




Developed as an efficient response to South American market needs for low-voltage inverters, GoodWe's LVMT series inverter is suitable for medium and large-scale commercial rooftops or ground-mounted solar PV systems where maximum versatility and profitability are important.



The GoodWe EM series bi-directional energy storage inverter can be used for on-grid PV systems, with the ability to control the flow of energy intelligently. During the day, the PV array generates electricity which can be provided either to the loads, fed into the grid or charge the battery, depending on the economics and set-up.



? A Full Range of GoodWe Inverters Available in Australia The majority of GoodWe's Inverters are approved by the Clean Energy Council for the Small-scale Renewable Energy Scheme, which is Australia's home solar rebate program. The following GoodWe Inverter Series & sizes are CEC approved: GoodWe XS Series 0.7-3kW; GoodWe DNS Series 3-5kW

GOODWE SOLAR INVERTER DATASHEET



Solar Inverter Directory; MT Series 50-80 kW MT
Series 50-80 kW GoodWe Technologies Co., Ltd.
Type: Hybrid Power Range: 57.5~88 kW GoodWe
Inverters Now Available in Southeast Asia Market
Other News (6) 16 May 2024



GoodWe inverters are popularly being used in
residential and commercial solar system
installations, with more than 12GW installed so far
in over 100 countries across the globe. Download
the GoodWe Inverter datasheets for more details.
GW-GW3000-NS. GW-GW2500-NS.
GW-GW1500-NS. GW-GW2000-NS.
GW-GW3000D-NS. GW-GW4200D-NS.
GW-GW5000D ???



Solar Inverter Directory; SDT G2 Plus+ Series SDT
G2 Plus+ Series GoodWe Technologies Co., Ltd.
Type: On-Grid Power Range: 4.4~22 kW GoodWe
Inverters Now Available in Southeast Asia Market
Other News (6) 16 May 2024

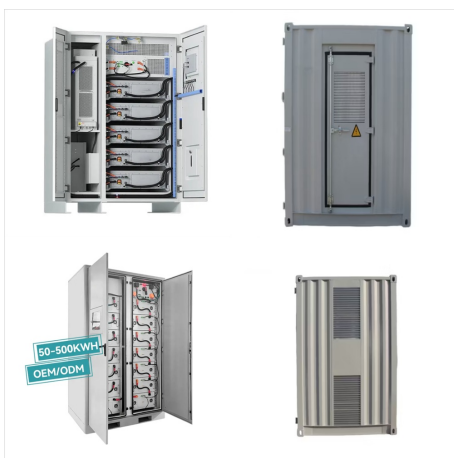
GOODWE SOLAR INVERTER DATASHEET



The new HT1500V Series (225/250kW) is GoodWe's top inverter with an extensive list of features designed to reduce system and O&M costs. It is a perfect choice for the utilization of utility-scale centralized PV plants to maximize the return of investment.



GoodWe DNS series is 3-6KW single phase on-grid solar inverter with compact size and light weight. Ideal for residential housing solar energy storage projects. Click to learn more about GoodWe DNS series now to provide greater options for household energy storage system.



% DC input oversizing, 110% AC output overloading capability, it drives your inverter to its full capacity by adding extra reflections from the backside of bifacial panels, to increase your power output under low solar radiation conditions.

GOODWE SOLAR INVERTER DATASHEET



The GoodWe A-ES Series is a split-phase hybrid inverter designed to increase self-consumption of your generated solar energy. GoodWe A-ES is compatible with high voltage (80-495V) batteries with a power capacity ranging from 5 kW to 9.6 kW. With up to 4 MPPTs, the A-ES inverter seamlessly adapts to complex residential rooftops.



The brand new XS model from GoodWe is an ultra-small residential solar inverter ranging from 0.7kW to 3.0kW. It is specifically designed to bring comfort and quiet operation as well as high efficiency to households. With a fascia size equivalent to a sheet of A4 paper and a weight of just 5.8kg, installation is could not be more convenient.

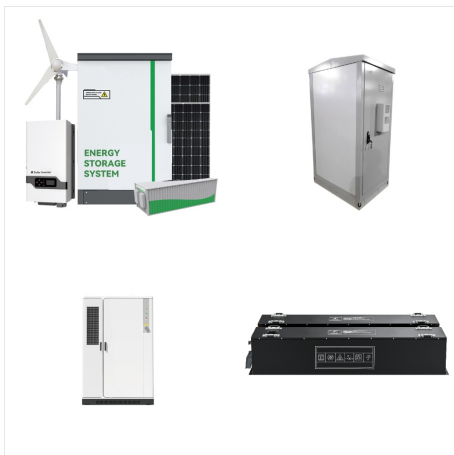


For enhanced safety, this inverter is able to incorporate AFCI. Its high efficiency (98.3%) and its enhanced oversizing & overloading capabilities represent an outstanding improvement in the industry. Moreover, its Technical Data GW4K-DT GW5K-DT GW6K-DT GW8K-DT GW10KT-DT GW12KT-DT GW15KT-DT Input Max. Input Voltage (V) 1000

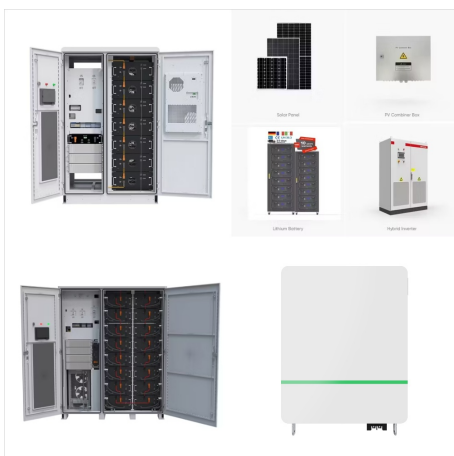
GOODWE SOLAR INVERTER DATASHEET



GoodWe's LVSMT Series three-phase inverter is designed with low voltage power input, and is an ideal choice for commercial installations. Developed as an efficient response to South American market needs for low-voltage inverters above 10 kW, this series is applicable to special grid voltage ranges within the region.

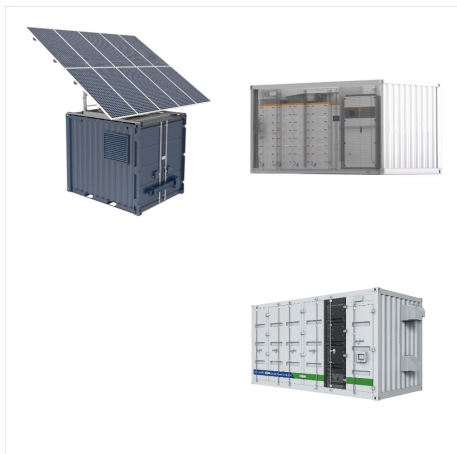


GoodWe NS series inverter adopts cutting-edge technology in photovoltaic fields, designed under modern industrial concept. Inheriting all the excellent traits from GoodWe SS and DS series, the NS series is much smarter in size and weight. It makes the series convenient for transport and suitable for different installation environments.



The GoodWe SMT 50-60kW Series inverter has a fuse-free design and is easy to maintain and repair, ideal for medium and large-scale commercial installations. Datasheet. User Manual. More Files. RELATED LINKS. Residential Solutions. Bring The Sun Home. GOODWE Solar Academy. GOODWE Solar Academy Data Protection Declaration

GOODWE SOLAR INVERTER DATASHEET



% DC input oversizing and 98.2% maximum efficiency, the inverter massively increases the daily energy yield under various solar radiation conditions. Its maximum DC input current of 16A and compatibility with high-power modules help generate more power and reduce the amount of electricity purchased from the grid to adapt to your needs.



Solar Inverter Directory; SMT Series SMT Series
GoodWe Technologies Co., Ltd. Type: On-Grid
Power Range: 27.5~66 kW Region: GoodWe
Inverters Now Available in Southeast Asia Market
Other News (6) 16 May 2024



Solar Inverter Directory; HT 1500V Series HT
1500V Series GoodWe Technologies Co., Ltd.
Type: Hybrid GoodWe Inverters Now Available in
Southeast Asia Market Other News (6) 16 May 2024
GoodWe Expands Presence in Canada through
Partnership with Guillevin Co.

GOODWE SOLAR INVERTER DATASHEET



Solar Inverter Directory; HT 1100V Series HT 1100V Series GoodWe Technologies Co., Ltd.
Type: On-Grid GoodWe Inverters Now Available in Southeast Asia Market Other News (6) 16 May 2024
GoodWe Expands Presence in Canada through Partnership with Guillevin Co.



With its compact design and power boost function, the Goodwe MT series of the new generation can provide a 150% continuous maximum AC output power overload, offering a faster return on investment. The start-up voltage is 200 V, much lower than other products, which makes the inverter start up earlier, therefore generating more power over time.



The SDT G2 series of inverter from GoodWe is one of the best options available in the residential & commercial sectors owing to its technical strengths, which make it one Please visit GoodWe website for the latest certificates. GoodWe-Single page-20240801-AU-V2.1. Information may be subject to change without notice during product improving.

GOODWE SOLAR INVERTER DATASHEET



The GoodWe SDT G2 Series is one of the best options available on the residential & commercial segments thanks to its technical strengths that make it one of the most efficient products in the market. For enhanced safety, this inverter is able to incorporate AFCI.