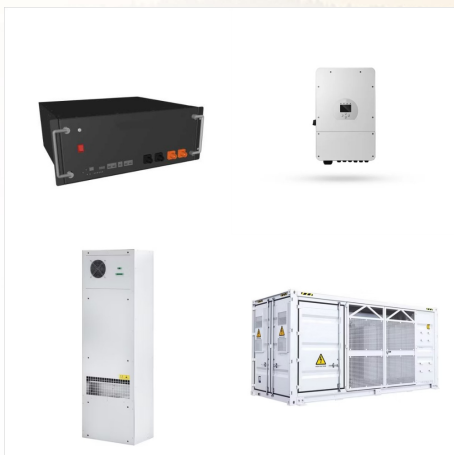
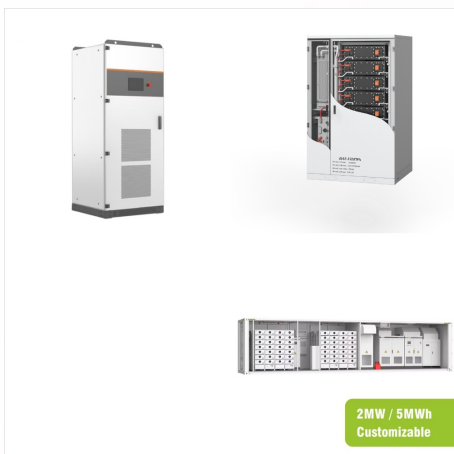


? 1/4 ?? 1/4 ? Heard Island and McDonald Islands,?  
1/4 ?HIMI? 1/4 ?,1947 ,1997? 1/4 ????? 1/4 ?????



? 1/4 ?? 1/4 ?Heard Island and McDonald Islands,?  
1/4 ?HIMI? 1/4 ?,1947,1997? 1/4 ????? 1/4  
????1600? 1/4 ?1000,3700,???80%, ???



Heard Island and McDonald Islands (abbreviated as HIMI) are uninhabited, barren islands located in the Southern Ocean, about two-thirds of the way from Madagascar to Antarctica, 7718 km due south of Rajapur, Maharashtra, India and approximately 4099 km west of Perth.

# HEARD AND MCDONALD ISLANDS

## 10 KV SOLAR SYSTEM



Heard Island and the McDonald Islands are free from introduced predators and provide crucial breeding habitat in the middle of the vast Southern Ocean for a range of birds. The surrounding waters are important feeding areas for birds and some scavenging species also derive sustenance from their cohabitants on the islands.



? 1/4 ?? 1/4 ? Heard Island and McDonald Islands, ?  
1/4 ?HIMI? 1/4 ?,1947 ,1997? 1/4 ????? 1/4 ?????



The Territory of Heard Island and McDonald Islands [2] [3] (HIMI; [4] ISO 3166 region code: HMD, HM, 334; [5]) is an Australian external territory comprising a volcanic group of mostly barren Antarctic islands, about two-thirds of the way from Madagascar to Antarctica.

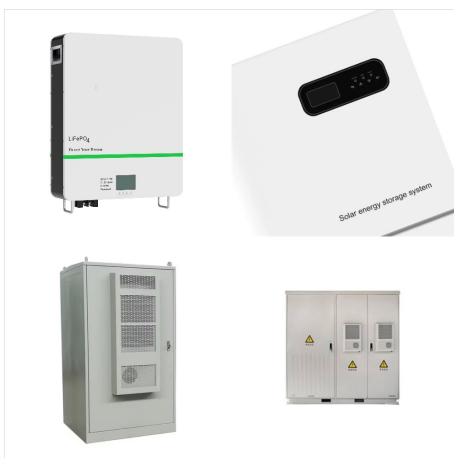
# HEARD AND MCDONALD ISLANDS 10 KV SOLAR SYSTEM



? 1/4 ? Heard Island and McDonald  
Islands??? HIMI? 1/4 ?, 1600??? 1947??? ,,,,



Heard Island and McDonald Islands are located in the Southern Ocean, approximately 1,700 km from the Antarctic continent and 4,100 km south-west of Perth. As the only volcanically active subantarctic islands they "open a window into the earth", thus providing the opportunity to observe ongoing geomorphic processes and glacial dynamics.



? 1/4 ?? 1/4 ? Heard Island and McDonald Islands,?  
1/4 ? HIMI? 1/4 ?, 1947 , 1997? 1/4 ????? ???

# HEARD AND MCDONALD ISLANDS 10 KV SOLAR SYSTEM



The Proposal to expand Heard Island and McDonald Islands Marine Reserve ??? Public consultation paper ("proclamation proposal") has been prepared to support public consultation on the proposed design of an expanded Heard Island and McDonald Islands (HIMI) Marine Reserve.