

Why are Heard Island and McDonald Islands isolated?

However, the site's isolation assists in reducing anthropogenic impacts upon the site's values. Heard Island and McDonald Islands are located in the Southern Ocean, approximately 1,700 km from the Antarctic continent and 4,100 km south-west of Perth.

Where are Heard Island and McDonald Islands located?

The islands are a territory (Territory of Heard Island and McDonald Islands) of Australia administered from Hobart by the Australian Antarctic Division of the Australian Department of Climate Change, Energy, the Environment and Water.

Is there a threat to Heard Island and the McDonald Islands?

Ongoing and accelerating climate change poses an increasing risk of fundamental alterations in biodiversity. Geological processes (primarily volcanism and glacial retreat) continue undisturbed. The overall assessment is that there is a low threat to the World Heritage values of Heard Island and the McDonald Islands if visitation remains low.

Who discovered Heard Island?

American sailor John HEARD discovered Heard Island in 1853 while fellow American William MCDONALD discovered the McDonald Islands the following year. Starting in 1855, sealers lived on the islands and harvested elephant seal oil; by the time the practice was ended in 1877, most of the islands' seals were killed.

What is the difference between Heard Island and McDonald Island?

Heard Island - 80% ice-covered, bleak and mountainous, dominated by a large massif (Big Ben) and an active volcano (Mawson Peak); McDonald Islands - small and rocky fish Mawson Peak, an active volcano, is on Heard Island

How big is Heard Island & McDonald Islands?

The group's overall land area is 372 km² (144 sq mi) and it has 101.9 km (63 mi) of coastline. Discovered in the mid-19th century, the islands lie on the Kerguelen Plateau in the Indian Ocean and have been an Australian territory since 1947. Heard Island and McDonald Islands contain

HEARD AND MCDONALD ISLANDS FRENCH SOLAR COMPANIES



Australia's only two active volcanoes.



Island and McDonald Islands group show unique evolutionary adaptations to the environment, and several other invertebrate groups provide opportunities to study evolutionary processes in undisturbed populations at the southern limits



Heard Island and McDonald Islands (abbreviated as HIMI) are uninhabited, barren islands located in the Southern Ocean, about two-thirds of the way from Madagascar to Antarctica, 7718 km due south of Rajapur, Maharashtra, India and approximately 4099 km west of Perth.



Heard Island and McDonald Islands. Antarctica. Page last updated: November 27, 2024. Photos of Heard Island and McDonald Islands. view 3 photos. Country Flag. View Details. Country Map. View Details. Locator Map. View Details. Contents. Introduction. Geography. People and Society

HEARD AND MCDONALD ISLANDS

FRENCH SOLAR COMPANIES



OverviewAdministration and
economyHistoryGeographyWildlifeSee alsoFurther
readingExternal links

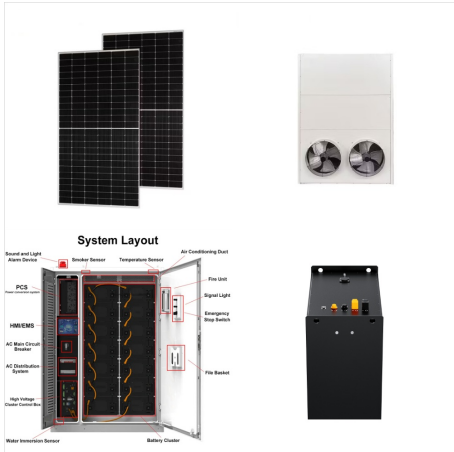


until 1955 there were camps of visiting scientists on
Heard Island (at Atlas Cove in the northwest, which
was in 1969 again occupied by American scientists
and expanded in 1971 by French scientists) and in
1971 on McDonald Island (at Williams Bay).



Starting in 1855, sealers lived on the islands
harvesting elephant seal oil; by the time the practice
was ended in 1877, most of the islands' seals were
killed. The UK formally claimed the islands in 1910
and Australian explorer Douglas MAWSON visited
Heard Island in ???

HEARD AND MCDONALD ISLANDS FRENCH SOLAR COMPANIES



This power plant will produce 100% renewable electricity from solar energy and water to supply the equivalent of 10,000 homes in Western Guiana 24 hours a day, year-round, at a lower cost than the territory's diesel power plants. 30% by SARA (Rubis Group) and 10% by HDF. French manufacturers McPhy and HDF will supply the electrolyzers and