



Commonwealth of Australia since 1953. The Heard Island and McDonald Islands Act 1953 provides the legislative basis for the Territory's administration. Administration of the Territory is the responsibility of the Australian Government department that administers the Heard Island and McDonald Islands Act 1953. This responsibility has

Web: <https://www.gebroedersducaat.nl>

HEARD AND MCDONALD ISLANDS SOLAR PANEL DEMO



The Territory of Heard Island and McDonald Islands (HIMI) is an Australian external territory comprising a volcanic group of mostly barren Antarctic islands, about two-thirds of the way from Madagascar to Antarctica. The ???



Satellitbild av sydspetsen av Heard Island. Kap Arkona ses p? v?nster sida av bilden, med Lied Glacier strax ovanf?r och Gotley Glacier strax nedanf?r. Big Ben Volcano och Mawson Peak ses l?ngst ned till h?ger p? bilden. Heard- och McDonald?arna, Heard and McDonald Islands, ?r en obebodd australisk ?grupp i s?dra Indiska oceanen.

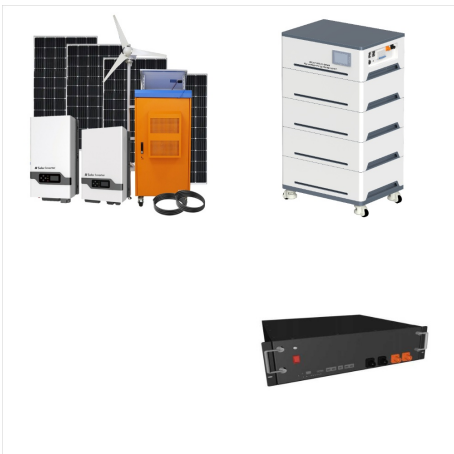


The Proposal to expand Heard Island and McDonald Islands Marine Reserve ??? Public consultation paper ("proclamation proposal") has been prepared to support public consultation on the proposed design of an expanded Heard Island and McDonald Islands (HIMI) Marine Reserve.

HEARD AND MCDONALD ISLANDS SOLAR PANEL DEMO



??????????? 3/4 ?? ???u???? ?, ? 3/4 ???????
 3/4 ?????? ?????????? 3/4 ??? 1/2 ???>???? (???
 1/2 ???>. Heard Island and McDonald Islands, ???
 3/4 ????????????? 1/2 ? 1/2 ? 3/4 HIMI) ??? ? 1/2
 ?u??? 3/4 ?>????? 3/4 ?? ? 1/2 ?u? 3/4
 ???,?????u? 1/4 ????? [1] ???????,????u?>????
 ?? ?????? 1/2 ? 3/4 ?? ??????????, ??? 1/2
 ???,???????? 3/4 ??? 3/4 ? 3/4 ???u??? 1/2 ??,???
 3/4 ?????? 3/4 ?,?? ?,?? ?????????? ? 3/4 ??? 1/2 ?
 3/4 ??? 1/2 ????? ? 3/4 ????????? 3/4 ??? 3/4 ?? ???
 ???u???? ?, ?????????? 3/4 ? 1/2 ???>????, ??
 ??????????u ?,??

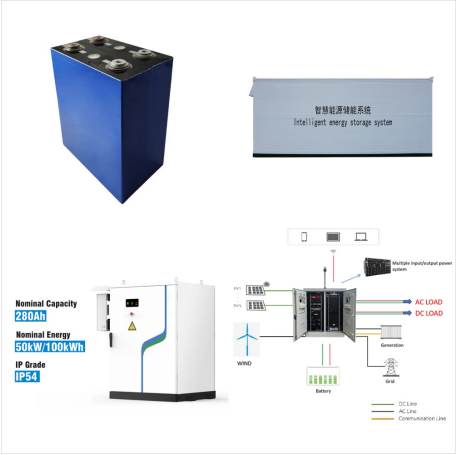


Les ?les Heard-et-MacDonald, en anglais Heard
 and McDonald Islands et Territory of Heard Island
 and McDonald Islands [1], sont un territoire
 ext?rieur de l'Australie situ? dans le sud de l'oc?an
 Indien, sur la plaque antarctique. Il est constitu?
 d'un petit archipel, les ?les McDonald, ainsi que
 d'une ?le isol?e, l'?le Heard. Situ? ? 422 km au
 sud-sud-est des ?les Kerguelen, ? 1 ???



(? 1/4 ?Heard Island and McDonald Islands, ? 1/4
 ?HIMI),,1947,1997 (???)???HIMI1600???

HEARD AND MCDONALD ISLANDS SOLAR PANEL DEMO



????,??,??,?????,(R)?,??,?????,?????,??,??,<?,
??,?????????,??,??,?????,??,??,??,-?,??,??,??,??
? (?,-?,??,??,??,??,(C): Heard Island and McDonald
Islands)
?,??,??,??,?????,-?,??,??,??,??,??,??,?????,?
?,??,??,?????,??,?????,??,??,?????,(R)?,??,????
?,?????,??,??,<?,??,?????????,??,??,?????,??,??
,??,-?,??,??,??,????? (Territory of Heard Island and
McDonald Islands) [1] [2]
????,?????,??,??,??,?????,??,?



Island and McDonald Islands group show unique evolutionary adaptations to the environment, and several other invertebrate groups provide opportunities to study evolutionary processes in undisturbed populations at the southern limits



Located in the Southern Ocean, this Australian external territory comprises mainly two volcanic islands, Heard Island and the McDonald Islands, featuring stark volcanic landscapes, glaciers, and the highest mountain in Australian territory, Mawson Peak. Significance.

HEARD AND MCDONALD ISLANDS SOLAR PANEL DEMO



Heard Island and McDonald Islands in the Southern Ocean A map of Heard Island and McDonald Islands. Heard Island, by far the largest of the group, is a 368-square-kilometre (142 sq mi) mountainous island covered by 41 glaciers [21] (the island is 80% covered with ice [1]) and dominated by the Big Ben massif has a maximum elevation of 2,745 metres (9,006 ft) at ???



De Heard en McDonaldeilanden (Engels: Heard Island and McDonald Islands (HIMI)) zijn een onbewoonde onherbergzame subantarctische eilandengroep in het zuiden van de Indische Oceaan op de breedtegraad van Vuurland en op dezelfde lengtegraad als Mumbai. Ze liggen op 1700 km van Antarctica en op 4100 km zuidwestelijk van Perth eilanden vallen onder de ???

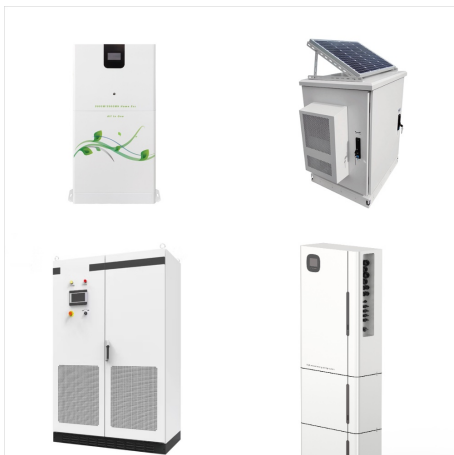


This 3 days itinerary is the perfect guide to the best things to see in Heard and McDonald Islands. It includes day-by-day activities, travel tips, and the top places to visit. Day 1: Arrival and Initial Exploration. Morning. Arrive at Heard Island via expedition vessel, typically from ???

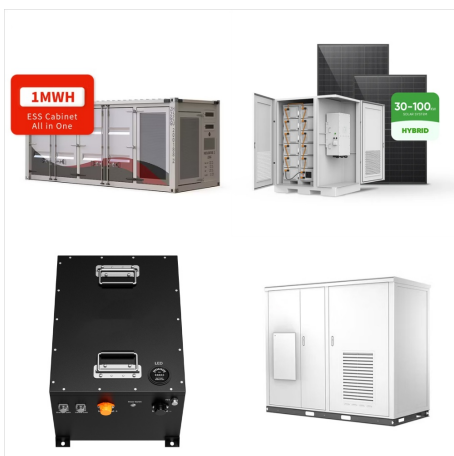
HEARD AND MCDONALD ISLANDS SOLAR PANEL DEMO



Heard Island is a 368-square-kilometre (142 sq mi) bleak and mountainous island located at 53°06′00″S 73°31′00″E. Its mountains are covered in glaciers and dominated by Mawson Peak, a 2,745-metre (9,006 ft) high complex volcano which forms part of the Big Ben massif. Mawson Peak is the highest Australian mountain (higher than Mount Kosciuszko), and one of only 2 ???



History & Geography. In the late 1850s, the islands were discovered by United Kingdom, and in 1910 were formally annexed with the raising of the Union Jack. They are now administered by Australia. Nowadays, only some people can visit the island, as it is a protected nature reserve, and a place for scientific research. Surprisingly, Heard Island and ???

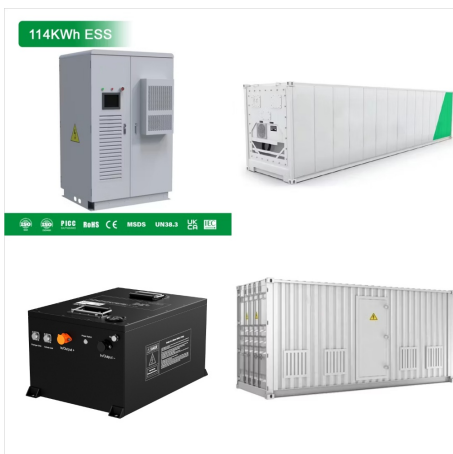


Wolof: Heard Island and McDonald Islands; **Wu Chinese:** ; **Yoruba:** Er?k?s? Heard ?ti Er?k?s? McDonald; **Yoruba:** Er?k????? Heard ?ti ?w?>>?n Er?k????? McDonald; **Yoruba:** Heard Island and McDonald Islands; **Yue Chinese:** ; **Zulu:** I-Heard & McDonald Island; Heard- og McDonaldseyjar

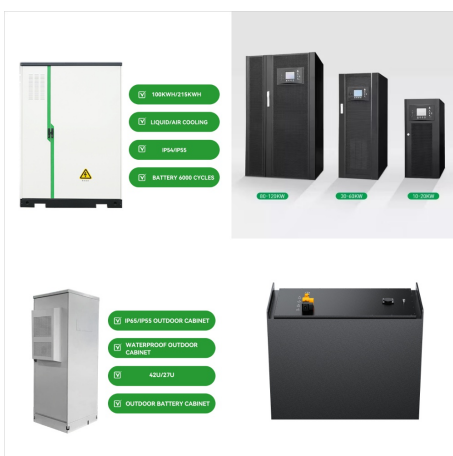
HEARD AND MCDONALD ISLANDS SOLAR PANEL DEMO



The Territory of Heard Island and McDonald Islands [2] [3] (HIMI; [4] ISO 3166 region code: HMD, HM, 334; [5]) is an Australian external territory comprising a volcanic group of mostly barren Antarctic islands, about two-thirds of the way ???



The two small triangles are the McDonald Islands, mostly small rock islands and not nearly as impressive as Heard. I know that they probably are not as green as on the flag, but I simply didn't want to have grey on there. Lastly there's the southern cross from the Australian flag, following the lead of Christmas Island and the Cocos Islands.



Heard and McDonald Islands. In fact Heard and McDonald Islands are far to the south west of mainland Australia, in the south of the Indian Ocean (near Kerguelen Island, approximately 73 degrees east, 53 degrees south -- reference: The Times Atlas of the World) There was a scientific base on Heard Island in the 1950s but it is not currently staffed.

HEARD AND MCDONALD ISLANDS SOLAR PANEL DEMO



McDonald Island is much smaller (2.5 km²), about 100 000 years old and totally ice-free, and is predominantly composed of phonolitic rocks. 9, 10 During the campaign, signs of volcanic activity



Heard Island and McDonald Islands Fishery Management Plan 2002 v Compilation No. 4 Compilation date: 04/05/2016 fishery means the Heard Island and McDonald Islands Fishery. fishing year means a period of 12 months beginning on 1 December in any year. Heard Island and McDonald Islands Fishery means fishing for fish of a



The December solstice (summer solstice) in Territory of Heard Island and McDonald Islands is at 2:20 pm on Saturday, December 21, 2024. In terms of daylight, this day is 9 hours, 25 minutes longer than the June solstice. In locations south of the equator, the longest day of the year is around this date.

HEARD AND MCDONALD ISLANDS SOLAR PANEL DEMO



Heard Island and McDonald Islands are located in the Southern Ocean, approximately 1,700 km from the Antarctic continent and 4,100 km south-west of Perth. As the only volcanically active subantarctic islands they "open a window into the earth", thus providing the opportunity to observe ongoing geomorphic processes and glacial dynamics.



? 1/4 ?? 1/4 ? Heard Island and McDonald Islands, ?
1/4 ?HIMI? 1/4 ?,1947 ,1997? 1/4 ????? 1/4 ?????
1600? 1/4 ?1000,3700



Heard & McDonald Islands Postcodes, ZIP Codes, Postal Codes information, The Heard & McDonald Islands is a country primarily located in Antarctica, The capital is Canberra. The numeric is 334 and dial code is +672. The postal system name in the country is Postcode, You can find out the postal code of each region from our website. We provide postal codes for 2 ???

HEARD AND MCDONALD ISLANDS SOLAR PANEL DEMO



Heard Island and McDonald Islands are located in the Southern Ocean, approximately 1,700 km from the Antarctic continent and 4,100 km south-west of Perth. As the only volcanically active subantarctic islands they "open a window into the earth", thus providing the opportunity to observe ongoing geomorphic



The Territory of Heard Island and McDonald Islands (HIMI; ISO 3166 region code: HMD, HM, 334;) is an Australian external territory comprising a volcanic group of mostly barren Antarctic islands, about two-thirds of the way from Madagascar to Antarctica. The group's overall land area is 372 km² (144



L'isola Heard e le isole McDonald sono isole disabitate che si trovano nell'Oceano Antartico, a circa due terzi di distanza tra il Madagascar e l'Antartide. Esse costituiscono un territorio esterno australiano dal 1947 e contengono i due soli vulcani attivi presenti sul territorio australiano, uno dei quali (Mawson Peak) ? anche la montagna australiana pi? elevata, con 2.745 metri.