

Where are Heard Island and McDonald Islands located?

The islands are a territory (Territory of Heard Island and McDonald Islands) of Australia administered from Hobart by the Australian Antarctic Division of the Australian Department of Climate Change, Energy, the Environment and Water.

How big is Heard Island & McDonald Islands?

The group's overall land area is 372 km<sup>2</sup> (144 sq mi) and it has 101.9 km (63 mi) of coastline. Discovered in the mid-19th century, the islands lie on the Kerguelen Plateau in the Indian Ocean and have been an Australian territory since 1947. Heard Island and McDonald Islands contain Australia's only two active volcanoes.

What is the difference between McDonald Island and Heard Island?

Heard Island is approximately 362.5 km<sup>2</sup> in area and is 43 km long and 21 km wide. The McDonald Islands are a group of uninhabited rocky islets, which are 2.6 km<sup>2</sup> in total area and are 40 km west of Heard Island.

Does Heard Island have a harbour?

Heard Island and the McDonald Islands have no ports or harbours; ships must anchor offshore. The coastline is 101.9 km (63.3 mi) in extent, and a 12 nmi (22 km) territorial sea and 200 nmi (370 km) exclusive fishing zone are claimed. [2]

Who discovered Heard Island?

American sailor John HEARD discovered Heard Island in 1853 and thought it was a glacier that had broken away from Antarctica. Fellow American William MCDONALD discovered the McDonald Islands the following year.

Is Heard Island a subantarctic island?

The fauna of the freshwater pools, lakes, streams and mires found in the coastal areas of Heard Island are broadly similar to those on other subantarctic islands of the southern Indian Ocean. Many species reported

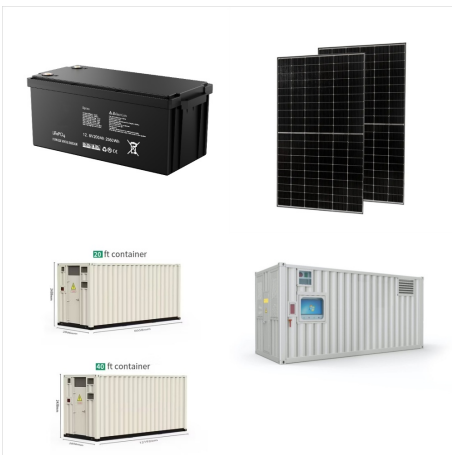
# HEARD AND MCDONALD ISLANDS STOCKAGE D'ÉNERGIE ELECTRIQUE



from Heard Island are found elsewhere.



Island and McDonald Islands group show unique evolutionary adaptations to the environment, and several other invertebrate groups provide opportunities to study evolutionary processes in undisturbed populations at the southern limits



The activity on the McDonald Islands group resulted in the island doubling in size and increasing in elevation by about 100 m (Australian Government 2016). Along with the French Kerguelen group of islands 440 km to the northwest, Heard and McDonald Islands form the only exposed parts of the submarine Kerguelen plume (Australian Government 2016).

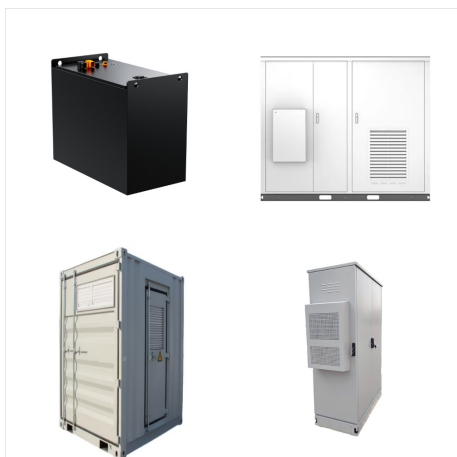


Le stockage de l'énergie facilitera la grande échelle la production d'énergie renouvelable en permettant un approvisionnement constant et de haute qualité en électricité ?

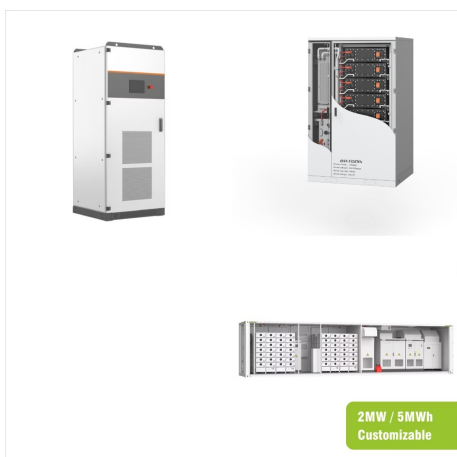
# HEARD AND MCDONALD ISLANDS

## STOCKAGE D'ÉNERGIE

## ELECTRIQUE



Le stockage de l'énergie facilitera la grande échelle la production d'énergie renouvelable en permettant un approvisionnement constant et de haute qualité en électricité.



1/4 Heard Island and McDonald Islands??HIMI? 1/4 ?,1600??? 1947??? ,,,,



Heard Island and McDonald Islands. Antarctica. Page last updated: November 27, 2024. Photos of Heard Island and McDonald Islands. [view 3 photos](#). [Country Flag](#). [View Details](#). [Country Map](#). [View Details](#). [Locator Map](#). [View Details](#). [Contents](#). [Introduction](#). [Geography](#). [People and Society](#)

# HEARD AND MCDONALD ISLANDS STOCKAGE D'ÉNERGIE ELECTRIQUE



? 1/4 ?? 1/4 ? Heard Island and McDonald Islands, ?  
1/4 ? HIMI ? 1/4 ?, 1947, 1997 ? 1/4 ????? 1/4  
???? 1600 ? 1/4 ? 1000, 3700, ??? 80%, ???



Overview Administration and  
economy History Geography Wildlife See also Further  
reading External links



The islands are a territory (Territory of Heard Island and McDonald Islands) of Australia administered from Hobart by the Australian Antarctic Division of the Australian Department of Climate Change, Energy, the Environment and Water.

# HEARD AND MCDONALD ISLANDS STOCKAGE D'ÉNERGIE ELECTRIQUE



? 1/4 ?? 1/4 ? Heard Island and McDonald Islands,?  
1/4 ?HIMI? 1/4 ?,1947 ,1997? 1/4 ????? 1/4 ?????